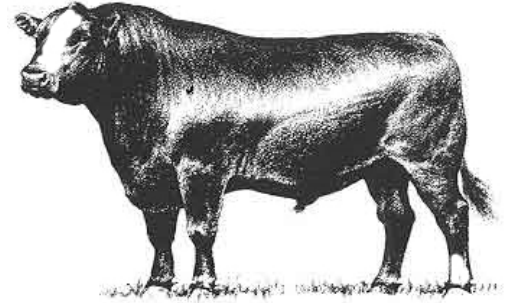


Hinds Community College Bull Test
Mississippi Beef Cattle Improvement Association
2022 Spring Bull Sale

Thursday, March 3, 2022 • 12:00 Noon
Hinds Community College
1310 Seven Springs Road, Raymond, MS



**MISSISSIPPI STATE UNIVERSITY™
EXTENSION**

Dear Cattle Producers:

The Hinds Community College Bull Test and Mississippi Beef Cattle Improvement Association cattle marketing partnership is a proven source for breeding cattle that build profits. In today's cattle market, the payoffs from using quality herd sires make acquiring high quality genetics a must for producers.

We recognize that quality bulls are essential to producing profitable calf crops. Time and time again our bull buyers cite the breed leading genetics, environmental adaptability, freight, and customer service advantages of purchasing bulls raised in Mississippi. All bulls in our spring sale are screened for structure, disposition, and performance and are guaranteed as breeders. These bulls have passed breeding soundness examinations, met minimum growth and scrotal circumference requirements, and represented quality genetics.

The sale will be broadcast live from the Raymond sale site over the Extension distance education system. A link to the sale site will be available at extension.msstate.edu/beef.

The cattle will be available for viewing at the Hinds Community College Sale Facility in Raymond, MS starting on the afternoon of March 2. BCIA members, breeders, and Extension personnel will be glad to assist you in selecting breeding cattle that will work well for your operation. We look forward to seeing you at the sale on March 3.

Sincerely,

Kenny Banes

Hinds Bull Test Manager

Brandi B. Karisch

Extension Beef Cattle Specialist

Cooperative Extension Service · Mississippi State University
Box 9815 · Mississippi State, MS 39762-9815 · Office (662) 325-3516 · Fax (662) 325-8873

Mississippi State University, United States Department of Agriculture, Counties Cooperating
Mississippi State University does not discriminate on the basis of race, color, religion, national origin, sex, age, disability, or veteran status.

Consignors

- Monogram Farms
- Moonshine Angus Ranch
- Fitch Brothers Charolais
- Verell Farms
- Mississippi State University
- GLB Farms



Consignor Contact Information

Monogram Farms (Angus)

Roland Preuss
1614 Ford Road
Terry, MS 39170
601-878-5896

Moonshine Angus Ranch(Angus)

Ray Gendron
434 Pastureview Dr.
Baton Rouge, LA 70810
225-931-5751

Fitch Brothers Charolais (Charolais)

Coy & Jerome Fitch
113 St. Germain Street
Jeanerette, LA 70544
(337) 376-5991, (337) 579-3422

Verell Farms (Balancer)

Tyler Gregory
1203 Crisler Rd.
Terry, MS 39170
601-622-8581

Mississippi State University Beef Unit (Angus & Hereford)

Bryan Carter & Brandi Karisch
Box 9815
Mississippi State, MS 39762
Bryan: (541) 377-0440
Brandi: (662) 325-7465
brandi.karisch@msstate.edu

GLB Farms (Ultrablack)

Billy Sumrall
21 Bethel Rd
Monticello, MS 39654
601-669-0072
glbbeef@yahoo.com

Terms, Conditions, and General Sale Information

TERMS: Terms of the sale are cash. Settlements are to be made with the clerk immediately after the conclusion of the auction. The Mississippi Beef Cattle Improvement Association acts as an agent only. The contract is between the buyer and seller.

BIDDING & DISPUTES: All cattle will be sold at public auction to the highest bidder. The auctioneer will settle any disputes concerning bids, and auctioneer decisions will be final. *Auctioneer: Jarvene Shackelford - American Livestock Brokers: H: (662) 837-4904 | Mobile: (662) 837-1776*

HEALTH: Health papers from licensed veterinarians accompany cattle to the sale. It is the responsibility of the buyer to know the health restrictions of his/her state and be aware of the possibility of any subsequent testing of animals purchased through this sale as required by law.

REGISTRATION: All bulls have been registered with their respective breed associations except where designated. Properly signed certificate of registry transfers will be furnished to the buyer.

BREEDING GUARANTEE: Animals are guaranteed to be without defects, but nothing more.

Bulls: All sale bulls will have documentation of a passed breeding soundness exam, including scrotal measurements within 30 days prior to sale. Scrotal circumference measurement minimums for sale bulls are 32 cm for 12–16 month old bulls, 34 cm for 17–23 month old bulls, and 36 cm for 24+ month old bulls. Bulls failing to breed after a trial of six months may be returned to the seller, if in good condition. The seller reserves the right to try said animal for six months, and if he proves to be a breeder, to return him to the buyer at the buyer's expense. If the bull proves to be a non-breeder, a satisfactory exchange will be made or purchase price refunded.

ANNOUNCEMENTS: Announcements made from the auction block on sale day shall take precedence over information printed in the catalog. It is therefore the buyer's responsibility to pay attention to any such announcements.

PROCESSING FOR SALE: Cattle are to be delivered to the sale location by 12:00 noon on March 2, 2022 (the day preceding the sale). Cattle will be weighed, beginning at 1:00 p.m. that day and available for viewing afterwards.

SALE ORDER: Hinds Bull Test Bulls will sell first based on an index (2 x WDA + 1 x ADG)/3. The MBCIA bulls will sell based on individual performance data, EPDs, general conformation and quality. A selection index based on the individual bull's score in the following categories will be used to rank bulls for determination of sale order (highest scoring will sell first); CE or BW EPD (max of 5 points), WW EPD (max. of 7.5 points), YW EPD (max. of 7.5 points), scrotal circumference (max. of 5 points), weight per day of age (max. of 15 points), IMF EPD (max of 5 points), REA EPD (max of 5 points), and visual appraisal (max. of 40 points). Five points will be added to a bull's selection index total if ultrasound scan results are provided.

CATTLE REMOVAL: Cattle purchased will be cared for 24 hours after the conclusion of the sale without charge. Arrangements for removal from grounds must be made at the conclusion of the 24 hours.

LIABILITY: All persons who attend this sale do so at their own risk. The owners and sponsors assume no responsibility, legal or otherwise, for any accidents that may occur.

Explanation of Performance Records

Bull Designations

Bulls meeting certain expected progeny difference (EPD) requirements are noted with one or more of the following designations:

- **Balanced Trait:** *should provide moderation for calving ease, growth, and milking ability*
- **Terminal:** *should produce calves with exceptional growth performance*
- **Calving Ease:** *should reduce the risk of calving difficulty in females to which a bull is bred*

Individual Bull Performance Records

<i>BW</i>	<i>Adj. WW</i>	<i>WW Ratio</i>	<i>Adj. YW</i>	<i>YW Ratio</i>	<i>Adj. IMF</i>	<i>IMF Ratio</i>	<i>Adj. REA</i>	<i>REA Ratio</i>
1	2	3	4	5	6	7	8	9

1. **Birth Weight** – Actual birth weight.
2. **Adjusted Weaning Weight** – Weaning weight adjusted to 205 days of age.
3. **Adjusted Weaning Weight Ratio** – Bull's weaning weight as compared to his contemporary group. Average = 100.
4. **Adjusted Yearling Weight** – Yearling weight adjusted to 365 days of age.
5. **Adjusted Yearling Weight Ratio** – Bull's yearling weight as compared to his contemporary group. Average = 100.
6. **Adjusted Intramuscular Fat** – Percent intramuscular fat of the ribeye adjusted to 12 months of age.
7. **Adjusted Intramuscular Fat Ratio** – Bull's adjusted percent intramuscular fat as compared to his contemporary group. Average = 100.
8. **Adjusted Ribeye Area** – Area of the ribeye in square inches adjusted to 12 months of age.
9. **Adjusted Ribeye Area Ratio** – Bull's adjusted ribeye area as compared to his contemporary group. Average = 100.

Expected Progeny Differences

Expected progeny differences are a useful genetic selection tool. They provide predictions of the expected performance of the calves sired by a bull compared to the expected performance of calves sired by other bulls of the same breed. They are calculated as part of national cattle evaluation programs and are based on the performance records of an individual animal, its relatives, and its progeny. Most breed associations publish EPDs on individual animals in sire summaries and searchable Internet databases. Breed associations also publish tables that show where individual animals rank within the breed for specific traits.

Expected progeny differences can be used to make herd genetic improvement in both commercial and seedstock operations. They should be used in conjunction with other selection criteria in a balanced approach to select herd sires with acceptable combinations of economically relevant traits that will complement cow herds and match market targets. Genetic improvement can mean increased weaning weights and growth performance, enhanced reproductive performance and better performance on the rail, all of which can enhance the profitability of a cattle operation. **Printed EPD values are accurate as of 2/15/2022.**

Accuracy Values (ACC)

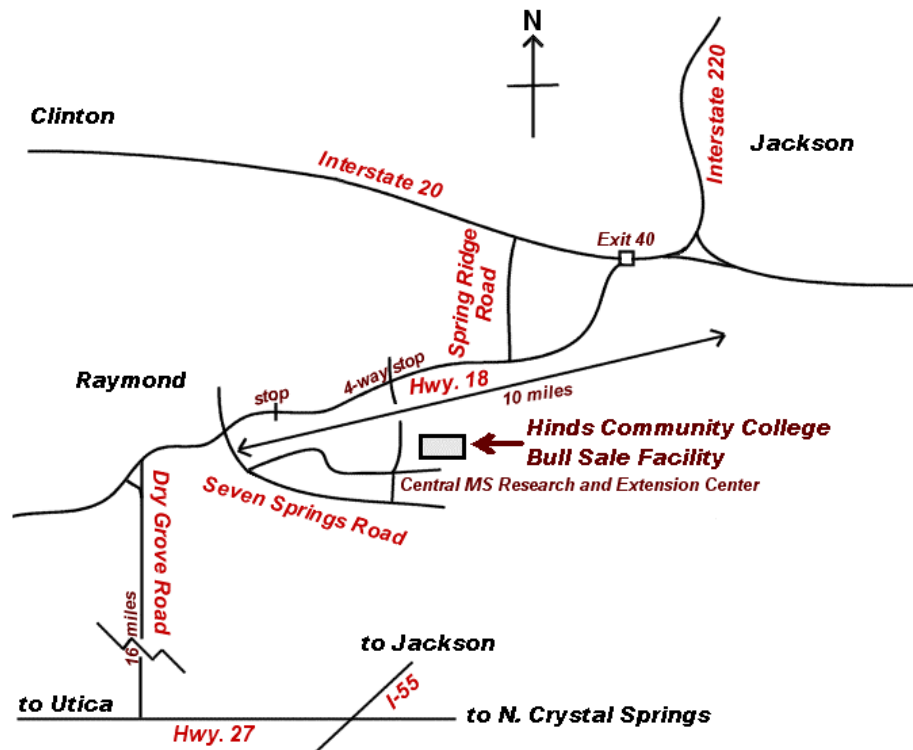
Expected progeny differences come with **accuracy values (ACC)** that give an indication of the reliability of the EPDs. Accuracy values help breeders determine the level of uncertainty or risk associated with selection decisions. They are reported as a decimal number between zero and one. Larger values indicate greater accuracy. Remember, EPDs can be directly compared regardless of accuracy. Accuracies simply reflect risk.

Expected change tables are published by breed associations as part of national cattle evaluations to show how much variation can be expected for EPDs at specific accuracy levels. As more usable performance information becomes available for an animal and its relatives and progeny, the more accurate or reliable its EPDs become. Thus, a young, unproven bull with no calves will have lower accuracy EPDs than a proven sire with hundreds of calf records.

Spring 2022 EPD Percentile Rankings for Non-Parents

BREED	% RANKING	EPD							
		CE	Birth	Weaning	Yearling	Milk	Scrotal	Marb	REA
Angus	TOP 25%	9	2	67	119	29	1.21	0.86	0.79
	50%	7	1.3	59	104	25	0.80	0.63	0.62
	75%	4	2.4	51	90	22	0.40	0.40	0.45
Charolais	TOP 25%	5.0	-0.8	32.7	59.5		1.0	0.15	0.52
	50%	3.3	0.5	26.9	49.1		0.8	0.06	0.35
	75%	0.4	1.7	21.0	38.6		0.5	-0.02	0.20
Hereford	Top 25%	5.6	1.7	60	96	30	1.2	0.17	0.52
	50%	2.6	2.9	55	88	26	1.0	0.09	0.41
	75%	-1.2	4.3	46	74	22	0.8	0.03	0.30
Ultrablack	Top 25%	6.1	-0.2	39.8	75.5	10.2	0.88		0.58
	50%	4.9	0.8	33.1	63.2	8.0	0.67		0.46
	75%	3.7	1.9	26.3	50.2	5.8	0.46		0.35

Map to Sale Location



Please join us next fall in Raymond for the 2022 Fall BCIA Bull and Heifer Sale on Thursday, November 3, 2022.

Monogram Farms



MONOGRAM 118 RENOWN 1510

1

ANGUS

Hinds
Bull Test

Calved: 11/14/2020 Tattoo:1510 Reg. #: 20126023

S A V Renown 3439
Monogram Renown 1188
Monogram Evergreen 24012
Monogram Brand Name 792
Monogram Betty 974
Monogram Betty 2861

BW	Adj. WW	WW Ratio	Adj. YW	End Test Wt	Test WDA	WDA Ratio	Test ADG	ADG Ratio						
80	718	98		1560	3.46	115	5.71	118						
	CED	BW	WW	YW	RADG	YH	SC	Doc	HP	CEM	Milk	MW	MH	\$EN
EPD	4	1.3	40	77						8	24			-4
ACC	0.16	0.34	0.28	0.16						0.08	0.12			
	CW	Marb	RE	Fat	\$M	\$W	\$F	\$G	\$B	\$C				
EPD	31	.12	.62	.019	75	37	69	27	96	200				
ACC	0.12	0.10	0.12	0.09										

Monogram Farms



MONOGRAM 46 REGARD 190

2

ANGUS

Hinds
Bull Test

Calved: 11/19/2020 Tattoo: 190 Reg. #: 20126090

S A V Regard 4863
Monogram Regard 468
Monogram Peacemaker 2388
Monogram 46 BN 1076
Monogram Blackbird 1418
Monogram Blackbird 443

BW	Adj. WW	WW Ratio	Adj. YW	End Test Wt	Test WDA	WDA Ratio	Test ADG	ADG Ratio						
76	786	107		1580	3.54	121	5.00	108						
	CED	BW	WW	YW	RADG	YH	SC	Doc	HP	CEM	Milk	MW	MH	\$EN
EPD	4	2.0	63	105						7	28			-22
ACC	0.18	0.33	0.27	0.15						0.08	0.09			
	CW	Marb	RE	Fat	\$M	\$W	\$F	\$G	\$B	\$C				
EPD	53	.25	.50	.012	71	65	90	31	121	228				
ACC	.11	.08	.11	.08										

Monogram Farms



MONOGRAM 118 RENOWN 1630

3

ANGUS

Hinds
Bull Test

Calved: 09/26/2020 Tattoo: 1630 Reg. #: 20126025

S A V Renown 3439
Monogram Renown 1188
Monogram Evergreen 24012
S A V Brilliance 8077
Monogram Queen 424
Monogram Queen 2028

BW	Adj. WW	WW Ratio	Adj. YW	End Test Wt	Test WDA	WDA Ratio	Test ADG	ADG Ratio						
82	659	90		1540	3.08	103	4.91	101						
	CED	BW	WW	YW	RADG	YH	SC	Doc	HP	CEM	Milk	MW	MH	\$EN
EPD	1	2.6	39	72						4	24			+2
ACC	0.17	0.35	0.29	0.17						0.11	0.14			
	CW	Marb	RE	Fat	\$M	\$W	\$F	\$G	\$B	\$C				
EPD	28	0.18	0.48	0.028	62	33	70	27	96	187				
ACC	0.05	0.05	0.05	0.05										

Monogram Farms



MONOGRAM 115 RENOWN 2050

4

ANGUS

Hinds
Bull Test

Calved: 10/04/2020 Tattoo: 2050 Reg. #: 20126059

S A V Renown 3439
Monogram Renown 1158
Monogram Duchess 582
Monogram Heritage 724
Monogram Betty 1626
Monogram Betty 1134

BW	Adj. WW	WW Ratio	Adj. YW	End Test Wt	Test WDA	WDA Ratio	Test ADG	ADG Ratio						
65	704	96		1555	3.16	105	4.78	98						
	CED	BW	WW	YW	RADG	YH	SC	Doc	HP	CEM	Milk	MW	MH	\$EN
EPD	9	-0.7	59	100						10	21			-6
ACC	0.17	0.34	0.28	0.16						0.10	0.11			
	CW	Marb	RE	Fat	\$M	\$W	\$F	\$G	\$B	\$C				
EPD	44	0.29	0.56	0.038	89	58	81	32	113	236				
ACC	0.12	0.10	0.12	0.09										

Monogram Farms



MONOGRAM 118 RENOWN 1360

5

ANGUS

Hinds
Bull Test

Calved: 09/26/2020 Tattoo: 1360 Reg. #: 20126108

S A V Renown 3439
Monogram Renown 1188
Monogram Evergreen 24012
S A V Priority 7283
Monogram Evergreen 2403
Monogram Evergreen 4443

BW	Adj. WW	WW Ratio	Adj. YW	End Test Wt	Test WDA	WDA Ratio	Test ADG	ADG Ratio						
78	618	84		1380	2.76	92	5.04	104						
	CED	BW	WW	YW	RADG	YH	SC	Doc	HP	CEM	Milk	MW	MH	\$EN
EPD	3	1.6	34	65						7	25			+4
ACC	0.17	0.35	0.29	0.17						0.11	0.14			
	CW	Marb	RE	Fat	\$M	\$W	\$F	\$G	\$B	\$C				
EPD	30	0.02	0.57	0.019	66	32	70	22	92	185				
ACC	0.05	0.05	0.05	0.05										

Monogram Farms



MONOGRAM 118 RENOWN 1370

6

ANGUS

Hinds
Bull Test

Calved: 10/03/2020 Tattoo: 1370 Reg. #: 20126108

S A V Renown 3439
Monogram Renown 1188
Monogram Evergreen 24012
S A V Priority 7283
Monogram Queen 2463
Monogram Queen 5274

BW	Adj. WW	WW Ratio	Adj. YW	End Test Wt	Test WDA	WDA Ratio	Test ADG	ADG Ratio						
82	652	89		1425	2.89	96	4.78	98						
	CED	BW	WW	YW	RADG	YH	SC	Doc	HP	CEM	Milk	MW	MH	\$EN
EPD	2	2.6	36	62						6	21			+13
ACC	0.18	0.35	0.29	0.17						0.12	0.14			
	CW	Marb	RE	Fat	\$M	\$W	\$F	\$G	\$B	\$C				
EPD	15	0.01	0.51	-0.001	68	28	62	22	85	178				
ACC	0.14	0.11	0.13	0.11										

Moonshine Angus Ranch



MAR ENHANCE 6028

7

ANGUS 

Hinds
Bull Test

Calved: 09/28/2020 Tattoo: 6028 Reg. #: 20067225

SydGen Exceed 3223
SydGen Enhance
SydGen Rita 2618
G A R Prophet
G A R Prophet A222
G A R Predestined A9027

BW	Adj. WW	WW Ratio	Adj. YW	End Test Wt.	Test WDA	WDA Ratio	Test ADG	ADG Ratio						
				1265	2.54	85	5.00	103						
	CED	BW	WW	YW	RADG	YH	SC	Doc	HP	CEM	Milk	MW	MH	\$EN
EPD	7	2.7	93	163	0.28	1.0	1.79	24	9.5	11	36	86	0.8	-36
ACC	0.35	0.51	0.45	0.41	0.35	0.47	0.43	0.38	0.26	0.34	0.34	0.38	0.41	
	CW	Marb	RE	Fat	\$M	\$W	\$F	\$G	\$B	\$C				
EPD	79	1.70	0.83	0.026	76	105	117	98	215	355				
ACC	0.42	0.39	0.38	0.35										

Monogram Farms



MONOGRAM 115 RENOWN 1920

8

ANGUS

Hinds
Bull Test

Calved: 11/23/2020 Tattoo: 1920 Reg. #: 20126052

S A V Renown 3439
Monogram Renown 1158
Monogram Duchess 582
Monogram Brand Name 463
Monogram Evergreen 1366
Monogram Evergreen 2403

BW	Adj. WW	WW Ratio	Adj. YW	End Test Wt	Test WDA	WDA Ratio	Test ADG	ADG Ratio						
93	749	102		1325	3.00	102	4.51	98						
	CED	BW	WW	YW	RADG	YH	SC	Doc	HP	CEM	Milk	MW	MH	\$EN
EPD	-2	3.4	63	104						2	24			-11
ACC	0.16	0.34	0.28	0.16						0.08	0.11			
	CW	Marb	RE	Fat	\$M	\$W	\$F	\$G	\$B	\$C				
EPD	32	0.09	0.43	0.007	70	56	83	24	107	209				
ACC	0.12	0.10	0.12	0.11										

Fitch Brothers Charolais



FBC INFERNO N010P

9

CHAROLAIS

Hinds
Bull Test

Calved: 11/1/2020 Tattoo: N010 Reg. #: M955323

LHD CIGAR E46
FBC CAJUN SMOKE 1034
JD MS COMMANDER B309
SCR CE CORONA POWER 222
FBC MISS POWER 9174P
VCR MISS RANCHER 2326 P

BW	Adj. WW	WW Ratio	Adj. YW	End Test Wt	Test WDA	WDA Ratio	Test ADG	ADG Ratio						
70				1115	2.40	98	4.55	111						
	CE	BW	WW	YW	Milk	MCE								
EPD	6.0	-1.6	55	96	26	5.0								
ACC	0.21	0.34	PE	PE	PE	0.10								
	TSI	SC	CW	REA	FAT	MARB								
EPD	237.75		16	0.74	-0.019	-0.04								
ACC			PE	PE	PE	PE								

Fitch Brothers Charolais



FBC INFERNO 029P

13

CHAROLAIS

Hinds
Bull Test

Calved: 11/28/2020 Tattoo: 029 Reg. #: M955321

LHD CIGAR E46
FBC TABASCO 9165P ET
JDJ MS DYNASTY L428
VCR MR DAKOTA STYLE 55 P
FBC MISS DAKOTA STYLE 1204 P
FBC MISS PRIME CUT 1289 P

BW	Adj. WW	WW Ratio	Adj. YW	End Test Wt	Test WDA	WDA Ratio	Test ADG	ADG Ratio
78				990	2.27	80	3.48	89
	CE	BW	WW	YW	Milk	MCE		
EPD	2.8	0.9	53	92	20	7.3		
ACC	0.20	0.33	PE	PE	PE	0.10		
	TSI	SC	CW	REA	FAT	MARB		
EPD	230.73		12	0.71	-0.006	-0.05		
ACC			PE	PE	PE	PE		

Fitch Brothers Charolais



FBC INFERNO 020P

14

CHAROLAIS

Hinds
Bull Test

Calved: 10/10/2020 Tattoo: 020 Reg. #: M955327

LHD CIGAR E46
FBC TABASCO 9165P ET
JDJ MS DYNASTY L428
KEYS ALL STATE 149X
FBC MS ALLSTATE 0275P
FBC MISS DESIGN 2223 P

BW	Adj. WW	WW Ratio	Adj. YW	End Test Wt	Test WDA	WDA Ratio	Test ADG	ADG Ratio
79				1065	2.19	89	3.39	83
	CE	BW	WW	YW	Milk	MCE		
EPD	1.1	0.4	56	101	14	6.6		
ACC	0.20	0.33	PE	PE	PE	0.10		
	TSI	SC	CW	REA	FAT	MARB		
EPD	242.03		18	0.87	-0.010	-0.03		
ACC			PE	PE	PE	PE		

Fitch Brothers Charolais



FBC INFERNO 0220P

15

CHAROLAIS

Hinds
Bull Test

Calved: 10/22/2020 Tattoo: 0220 Reg. #: M955315

LHD CIGAR E46
FBC CAJUN SMOKE 1034
JD MS COMMANDER B309
WCR SIR PRIMECUT 3020ETP
FBC MISS PRIME CUT 3108 P
FBC ST FIZZY

BW	Adj. WW	WW Ratio	Adj. YW	End Test Wt	Test WDA	WDA Ratio	Test ADG	ADG Ratio
90				985	2.08	85	3.48	85
	CE	BW	WW	YW	Milk	MCE		
EPD	-0.2	1.9	46	81	16	1.4		
ACC	0.21	0.35	PE	PE	PE	0.10		
	TSI	SC	CW	REA	FAT	MARB		
EPD	218.97		12	0.64	-0.012	-0.07		
ACC			PE	PE	PE	PE		

Verell Farms



Balancer Bull Tag 21

16

*Hinds
Bull Test*

GELBVIEWH BALANCER

Calved: 09/18/2020 Tattoo: 21 Non-registered

TAU Outright 162A
TJB 220Y OUTRIGHT 5125D ET
TJB Velvet 908U 220Y

Commercial Angus Cow

BW	Adj. WW	WW Ratio	Adj. YW	End Test Wt	Test WDA	WDA Ratio	Test ADG	ADG Ratio
				1545	3.04	104	4.91	105

Verell Farms



Balancer Bull Tag 19

17

*Hinds
Bull Test*

BALANCER

Calved: 09/21/2020 Tattoo: 19 Non-registered

TAU Outright 162A
TJB 220Y OUTRIGHT 5125D ET
TJB Velvet 908U 220Y

Commercial Angus Cow

BW	Adj. WW	WW Ratio	Adj. YW	End Test Wt	Test WDA	WDA Ratio	Test ADG	ADG Ratio
				1375	2.72	93	4.24	91

Mississippi State University



MSU Power Play H075



ANGUS

Lot 18

Calved: 09/12/2020 Tattoo: H075 Reg. #: 20070999

Basin Payweight 1682
V A R Power Play 7018
Sandpoint Blackbird 8809
G A R New Design 5050
MSU Forever Lady X148
MSU Forever Lady T135

BW	Adj. WW	WW Ratio	Adj. YW	YW Ratio	Adj. IMF	IMF Ratio	Adj. REA	REA Ratio						
80	609	100	939	100										
	CED	BW	WW	YW	RADG	DMI	YH	SC	HP	CEM	Milk	MW	MH	\$EN
EPD	I+11	I+0.5	I+71	I+123	I+0.27	I+0.97	I+0.08	I+1.43	I+9.0	I+13	I+33	I+69	I+0.7	-26
ACC	0.05	0.05	0.05	0.05	0.05	0.05	0.05	0.05	0.05	0.05	0.05	0.05	0.05	
	CW	Marb	RE	Fat	\$M	\$W	\$F	\$G	\$B	\$C				
EPD	I+52	I+0.70	I+0.55	I+0.020	64	85	99	51	150	259				
ACC	0.05	0.05	0.05	0.05										

Mississippi State University



MSU Counselor H077



ANGUS

Lot 19

Calved: 09/12/2020 Tattoo: H077 Reg. #: 19953573

Connealy Counselor
Hoover Counselor N29
Erica of Ellston G366
Limestone Made Right W935
MSU Forever Lady C064
MSU Forever Lady A070

BW	Adj. WW	WW Ratio	Adj. YW	YW Ratio	Adj. IMF	IMF Ratio	Adj. REA	REA Ratio						
60	564	96	791	96										
	CED	BW	WW	YW	RADG	DMI	YH	SC	HP	CEM	Milk	MW	MH	\$EN
EPD	15	-2.5	51	92	I+0.23	I+0.70	0.3	1.32	I+13.6	10	30	I+30	I-0.1	-5
ACC	0.23	0.36	0.31	0.29	0.05	0.05	0.36	0.33	0.05	0.14	0.15	0.05	0.05	
	CW	Marb	RE	Fat	\$M	\$W	\$F	\$G	\$B	\$C				
EPD	I+32	I+0.55	I+0.63	I+0.023	66	63	75	45	121	223				
ACC	0.05	0.05	0.05	0.5										

Mississippi State University



MSU Counselor H132



ANGUS

Lot 20

Calved: 10/20/2020 Tattoo: H132 Reg. #: 20009025

Connealy Counselor
Hoover Counselor N29
Erica of Ellston G366
S A V Final Answer 0035
MSU Blackbird C088
MSU Blackbird U155

BW	Adj. WW	WW Ratio	Adj. YW	YW Ratio	Adj. IMF	IMF Ratio	Adj. REA	REA Ratio						
72	605	103	875	106										
	CED	BW	WW	YW	RADG	DMI	YH	SC	HP	CEM	Milk	MW	MH	\$EN
EPD	9	0.6	61	114	I+0.27	I+0.95	0.6	1.19	I+13.7	6	32	I+44	I+0.2	-17
ACC	0.23	0.36	0.32	0.29	0.05	0.05	0.37	0.34	0.05	0.15	0.16	0.05	0.05	
	CW	Marb	RE	Fat	\$M	\$W	\$F	\$G	\$B	\$C				
EPD	I+47	I+0.58	I+0.71	I+0.007	63	68	103	49	152	260				
ACC	0.05	0.05	0.05	0.05										

Mississippi State University



MSU BLUEPRINT H080 ET



HEREFORD (Polled)

Lot 24

Calved: 9/15/2020. Tattoo: H080 Reg. #: 44292762

R LEADER 6964
BOYD 31Z BLUEPRINT 6153
NJW 91H 100W RITA 31Z ET
CMR GVP MR MATERNAL 156T
GRNDVW CMR 156T MATTIE Y511 ET
DJB 46B BETH 1L

	BW	Adj. WW	WW Ratio	Adj. YW	YW Ratio	Adj. IMF	IMF Ratio	Adj. REA	REA Ratio			
	65	559	100	777	100							
	CED	BW	WW	YW	DMI	Sust. Cow Fert	Milk	Milk & Growth	CEM	MW	Udder	Teat
EPD	3.7	1.9	57	84	-0.1	21.8	33	61	2.9	81	1.40	1.50
ACC	0.37	0.31	0.27	0.27	0.09	0.19	0.22		0.27	0.17	0.28	0.27
	CW	Marb	RE	Fat	BMI Index	BII Index	CHB Index					
EPD	68	0.08	0.57	0.028	439	514	114					
ACC	0.03	0.03	0.03	0.03								

Mississippi State University



MSU BLUEPRINT H081 ET



HEREFORD (Polled)

Lot 25

Calved: 09/15/2020 Tattoo: H081 Reg. #: 44292763

R LEADER 6964
BOYD 31Z BLUEPRINT 6153
NJW 91H 100W RITA 31Z ET
CMR GVP MR MATERNAL 156T
GRNDVW CMR 156T MATTIE Y511 ET
DJB 46B BETH 1L

	BW	Adj. WW	WW Ratio	Adj. YW	YW Ratio	Adj. IMF	IMF Ratio	Adj. REA	REA Ratio			
	72	615	100	782	100							
	CED	BW	WW	YW	DMI	Sust. Cow Fert	Milk	Milk & Growth	CEM	MW	Udder	Teat
EPD	2.1	2.5	59	87	-0.1	21.8	33	62	2.1	81	1.40	1.50
ACC	0.37	0.31	0.27	0.27	0.10	0.19	0.22		0.27	0.17	0.28	0.27
	CW	Marb	RE	Fat	BMI Index	BII Index	CHB Index					
EPD	68	0.07	0.57	0.018	440	515	116					
ACC	0.03	0.03	0.03	0.03								

Mississippi State University



MSU BLUEPRINT H095



HEREFORD (Polled)

Lot 26

Calved: 09/25/2020 Tattoo: H095 Reg. #: 44292765

R LEADER 6964
BOYD 31Z BLUEPRINT 6153
NJW 91H 100W RITA 31Z ET
TH 122 71I VICTOR 719T
MSU BOOMER C087
MSU MS BOOMER 5211

	BW	Adj. WW	WW Ratio	Adj. YW	YW Ratio	Adj. IMF	IMF Ratio	Adj. REA	REA Ratio			
	80	577	100	758	100							
	CED	BW	WW	YW	DMI	Sust. Cow Fert	Milk	Milk & Growth	CEM	MW	Udder	Teat
EPD	-2.3	4.8	66	103	0.0	20.3	30	63	-2.8	90	1.40	1.40
ACC	0.35	0.36	0.26	0.26	0.09	0.16	0.19		0.23	0.12	0.24	0.24
	CW	Marb	RE	Fat	BMI Index	BII Index	CHB Index					
EPD	70	-0.08	0.51	0.008	441	483	105					
ACC	0.03	0.03	0.03	0.03								

Mississippi State University



MSU BLUEPRINT H099



R LEADER 6964
 BOYD 31Z BLUEPRINT 6153
 NJW 91H 100W RITA 31Z ET
 GV CMR 86P RELIEVER Y165 ET
 MSU BOOMER A186
 MSU MS BOOMER 5211

Lot 27 HEREFORD (Polled)

Calved: 09/26/2020 Tattoo: H099 Reg. #: 44292766

	BW	Adj. WW	WW Ratio	Adj. YW	YW Ratio	Adj. IMF	IMF Ratio	Adj. REA	REA Ratio			
	85	571	100	900	100							
	CED	BW	WW	YW	DMI	Sust. Cow Fert	Milk	Milk & Growth	CEM	MW	Udder	Teat
EPD	3.5	2.8	61	96	0.03	16.4	26	56	0.0	91	1.30	1.30
ACC	0.33	0.35	0.24	0.24	0.09	0.14	0.17		0.21	0.13	0.23	0.24
	CW	Marb	RE	Fat	BMI Index	BII Index	CHB Index					
EPD	72	0.06	0.58	0.038	355	428	114					
ACC	0.03	0.03	0.03	0.03								

GLB FARMS



GLB BRAND INSIGHT 169H



ULTRABLACK

PVF INSIGHT 0129
 EXAR INSIGHT 6830B
 EXAR PRINCESS 3875
 GLB CCC KILMER 222X
 GLB BRAND 169YB
 GLB BRAND 158XY

Lot 28

Calved: 01/15/2020 Tattoo: 169H Reg. #: 10454682

	BW	Adj. WW	WW Ratio	Adj. YW	YW Ratio	Adj. IMF	IMF Ratio	Adj. REA	REA Ratio
	80	613	100	768	100				
	CED	BW	WW	YW	Milk	TM	CEM	SC	
EPD	4.4	0.1	27	47	9	23	3.3	0.49	
ACC	0.07	0.09	0.06	0.03	0.02		0.04	0.02	
	REA	IMF	FAT	HP	STAY	COW WT	TERM IN	FERT IN	
EPD	0.32	0.09	-0.040	1.48	1.33	-2.00	2.23	0.64	
ACC	0.03	0.02	0.02	0.01	0.00	0.00			

GLB FARMS



823H GLB BRAND INSIGHT



ULTRABLACK

PVF INSIGHT 0129
 EXAR INSIGHT 6830B
 EXAR PRINCESS 3875
 SALACOA BRAGG 23Z78
 GLB BRAND 823D
 GLB BRAND 823U

Lot 29

Calved: 02/18/2020 Tattoo: 823H Reg. #: 10454681

	BW	Adj. WW	WW Ratio	Adj. YW	YW Ratio	Adj. IMF	IMF Ratio	Adj. REA	REA Ratio
	79	687	100	842	100				
	CED	BW	WW	YW	Milk	TM	CEM	SC	
EPD	5.3	0.6	31	53	7	22	3.8	0.62	
ACC	0.09	0.11	0.08	0.05	0.03		0.04	0.03	
	REA	IMF	FAT	HP	STAY	COW WT	TERM IN	FERT IN	
EPD	0.49	0.10	-0.035	2.02	1.74	-3.62	2.57	1.35	
ACC	0.04	0.03	0.03	0.02	0.01	0.01			

