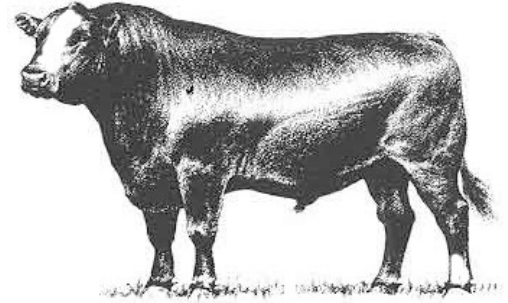


Hinds Community College Bull Test
Mississippi Beef Cattle Improvement Association
2025 Spring Bull Sale

Thursday, March 6, 2025 • 12:00 Noon
Hinds Community College
1310 Seven Springs Road, Raymond, MS



**MISSISSIPPI STATE UNIVERSITY™
EXTENSION**

Dear Cattle Producers:

The Hinds Community College Bull Test and Mississippi Beef Cattle Improvement Association cattle marketing partnership is a proven source for breeding cattle that build profits. In today's cattle market, the payoffs from using quality herd sires make acquiring high-quality genetics a must for producers.

We recognize that quality bulls are essential to producing profitable calf crops. Time and time again our bull buyers cite the breed leading genetics, environmental adaptability, freight, and customer service advantages of purchasing bulls raised in Mississippi. All bulls in our spring sale are screened for structure, disposition, and performance and are guaranteed as breeders. These bulls have passed breeding soundness examinations, met minimum growth and scrotal circumference requirements, and represented quality genetics.

The sale will be broadcast live from the Raymond sale site over the Extension distance education system. A link to the sale site will be available at extension.msstate.edu/beef.

The cattle will be available for viewing at the Hinds Community College Sale Facility in Raymond, MS starting on the afternoon of March 5. BCIA members, breeders, and Extension personnel will be glad to assist you in selecting breeding cattle that will work well for your operation. We look forward to seeing you at the sale on March 6.

Sincerely,

Kenny Banes

Hinds Bull Test Manager

Brandi B. Karisch

Extension Beef Cattle Specialist

Cooperative Extension Service · Mississippi State University
Box 9815 · Mississippi State, MS 39762-9815 · Office (662) 325-3516 · Fax (662) 325-8873

Mississippi State University, United States Department of Agriculture, Counties Cooperating
Mississippi State University does not discriminate on the basis of race, color, religion, national origin, sex, age, disability, or veteran status.

Consignors

- CMR Herefords
- Monogram Farms
- Verell Farms
- G&R Farms
- Fulper Angus Farm
- Mississippi State University
- R&K Cattle Co.
- YNOT Ranch LLC



Consignor Contact Information

Monogram Farms (Angus)

Roland Preuss
1614 Ford Road
Terry, MS 39170
601-878-5896

CMR Herefords (Hereford)

Walt McKellar
1680 LRL Road
Senatobia, MS 38668
662-292-1936

Verell Farms (Commercial Balancer)

Tyler Gregory
1203 Crisler Rd.
Terry, MS 39170
601-622-8581

G&R Farms (Angus)

Gary Powell
400 Franks Rd.
Mantachie, MS 38855
662-640-1957

Fulper Angus Farm (Angus)

Chris, Jody, and Caroline Fulper
PO Box 621
Booneville, MS 38829
662-416-4424 (Jody)
662-210-4934 (Chris)

Mississippi State University Beef Unit (Angus)

Alex Gardner & Brandi Karisch
Box 9815
Mississippi State, MS 39762
662-418-5002 (Alex)
225-717-3324 (Brandi)

R&K Cattle Co. (Angus and SimAngus)

Mark Ryals and Mike Keene
1090 Churchwell Rd.
Hattiesburg, MS 39401
601-270-4577 (Mark)
601-606-7382 (Mike)

YNOT Ranch LLC (Gelbvieh Balancer)

Ty Ladner
334 Quitman Perry Rd.
Carriere, MS 39426
601-590-1935

Terms, Conditions, and General

TERMS: Terms of the sale are cash. Settlements are to be made with the clerk immediately after the conclusion of the auction. The Mississippi Beef Cattle Improvement Association acts as an agent only. The contract is between the buyer and seller.

BIDDING & DISPUTES: All cattle will be sold at public auction to the highest bidder. The auctioneer will settle any disputes concerning bids, and auctioneer decisions will be final. *Auctioneer: Jarvene Shackelford - American Livestock Brokers: H: (662) 837-4904 | Mobile: (662) 837-1776*

HEALTH: Health papers from licensed veterinarians accompany cattle to the sale. It is the responsibility of the buyer to know the health restrictions of his/her state and be aware of the possibility of any subsequent testing of animals purchased through this sale as required by law.

REGISTRATION: All bulls have been registered with their respective breed associations. Properly signed certificate of registry transfers will be furnished to the buyer.

BREEDING GUARANTEE: Animals are guaranteed to be without defects, but nothing more.

Bulls: All sale bulls will have documentation of a passed breeding soundness exam, including scrotal measurements within 30 days prior to sale. Scrotal circumference measurement minimums for sale bulls are 32 cm for 12–16 month old bulls, 34 cm for 17–23 month old bulls, and 36 cm for 24+ month old bulls. Bulls failing to breed after a trial of six months may be returned to the seller, if in good condition. The seller reserves the right to try said animal for six months, and if he proves to be a breeder, to return him to the buyer at the buyer's expense. If the bull proves to be a non-breeder, a satisfactory exchange will be made or purchase price refunded.

Sale Information

ANNOUNCEMENTS: Announcements made from the auction block on sale day shall take precedence over information printed in the catalog. It is therefore the buyer's responsibility to pay attention to any such announcements.

PROCESSING FOR SALE: Cattle are to be delivered to the sale location by 12:00 noon on March 5, 2025 (the day preceding the sale). Cattle will be weighed, beginning at 1:00 p.m. that day and available for viewing afterwards.

SALE ORDER: Hinds Bull Test Bulls will sell first based on an index (2 x WDA + 1 x ADG)/3. The MBCIA bulls will sell based on individual performance data, EPDs, general conformation and quality. A selection index based on the individual bull's score in the following categories will be used to rank bulls for determination of sale order (highest scoring will sell first); CE or BW EPD (max of 5 points), WW EPD (max. of 7.5 points), YW EPD (max. of 7.5 points), scrotal circumference (max. of 5 points), weight per day of age (max. of 15 points), IMF EPD (max of 5 points), REA EPD (max of 5 points), and visual appraisal (max. of 40 points). Five points will be added to a bull's selection index total if ultrasound scan results are provided.

CATTLE REMOVAL: Cattle purchased will be cared for 24 hours after the conclusion of the sale without charge. Arrangements for removal from grounds must be made at the conclusion of the 24 hours.

LIABILITY: All persons who attend this sale do so at their own risk. The owners and sponsors assume no responsibility, legal or otherwise, for any accidents that may occur.

Explanation of Performance Records

Expected Progeny Differences

Expected progeny differences are a useful genetic selection tool. They provide predictions of the expected performance of the calves sired by a bull compared to the expected performance of calves sired by other bulls of the same breed. They are calculated as part of national cattle evaluation programs and are based on the performance records of an individual animal, its relatives, and its progeny. Most breed associations publish EPDs on individual animals in sire summaries and searchable Internet databases. Breed associations also publish tables that show where individual animals rank within the breed for specific traits.

Expected progeny differences can be used to make herd genetic improvement in both commercial and seedstock operations. They should be used in conjunction with other selection criteria in a balanced approach to select herd sires with acceptable combinations of economically relevant traits that will complement cow herds and match market targets. Genetic improvement can mean increased weaning weights and growth performance, enhanced reproductive performance and better performance on the rail, all of which can enhance the profitability of a cattle operation. **Printed EPD values are accurate as of 2/15/2025.**

Accuracy Values (ACC)

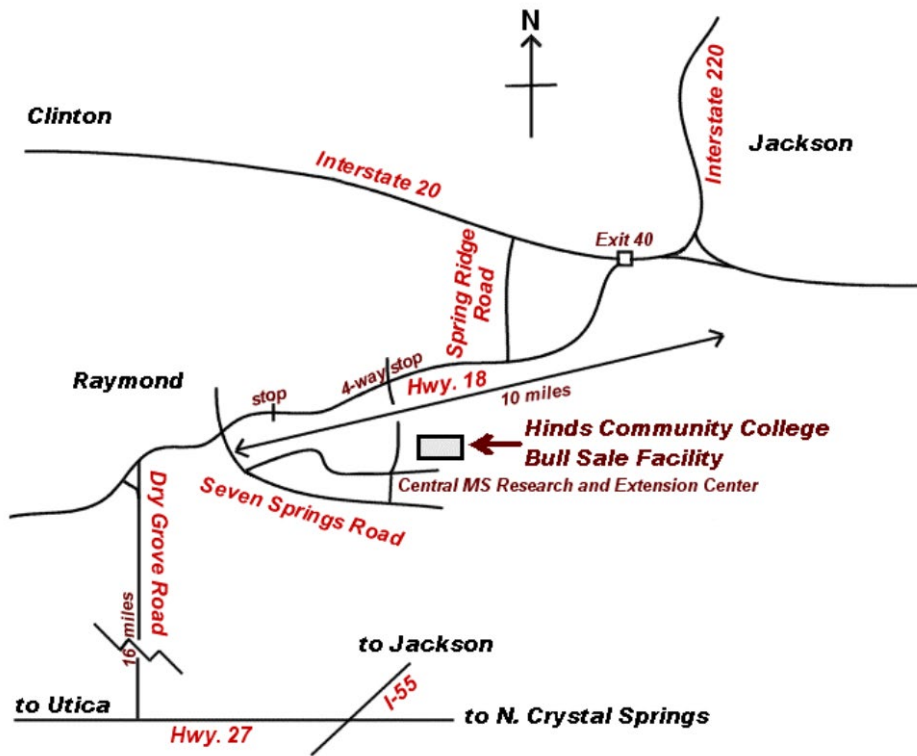
Expected progeny differences come with **accuracy values (ACC)** that give an indication of the reliability of the EPDs. Accuracy values help breeders determine the level of uncertainty or risk associated with selection decisions. They are reported as a decimal number between zero and one. Larger values indicate greater accuracy. Remember, EPDs can be directly compared regardless of accuracy. Accuracies simply reflect risk.

Expected change tables are published by breed associations as part of national cattle evaluations to show how much variation can be expected for EPDs at specific accuracy levels. As more usable performance information becomes available for an animal and its relatives and progeny, the more accurate or reliable its EPDs become. Thus, a young, unproven bull with no calves will have lower accuracy EPDs than a proven sire with hundreds of calf records.

Spring 2025 EPD Percentile Rankings for Non-Parents

BREED	% RANKING	EPD							
		CE	Birth	Weaning	Yearling	Milk	Scrotal	Marb	REA
Angus	TOP 25%	10	0.1	72	127	30	1.26	0.92	0.82
	50%	7	1.2	64	112	27	0.88	0.66	0.65
	75%	3	2.4	55	98	23	0.48	0.43	0.48
Hereford	Top 25%	6.8	1.4	63	101	32	1.4	0.49	0.61
	50%	3.5	2.7	57	91	27	1.0	0.12	0.45
	75%	0.2	3.9	50	80	22	0.7	0.02	0.28
Gelbvieh	Top 25%	15	-1.4	77	119	26	0.8	0.42	0.7
	50%	13	-0.2	71	108	23	0.6	0.29	0.56
	75%	11	0.9	65	97	20	0.4	0.18	0.43
SimAngus	Top 25%	14.8	-1.4	84.1	132.4	26.5		0.56	0.79
	50%	12.7	0.10	76.7	119	23.6		0.38	-0.65
	75%	10.7	1.4	69.6	106.2	20.7		0.23	0.50

Map to Sale Location



Please join us next fall in Raymond for the 2025 Fall BCIA Bull and Heifer Sale on Thursday, November 6, 2025. Consignments due September 15.

Monogram Farms



Monogram 115 Renown 273

1

ANGUS

Hinds
Bull Test

Calved: 10/27/2023 Tattoo: 273 Reg. #: 21119596

S A V Renown 3439
Monogram Renown 1158
Monogram Duchess 582
Monogram 46 BN 1156
Monogram Elba 1539
Monogram Elba 794

BW	Adj. WW	WW Ratio	Adj. YW	End Test Wt	Test WDA	WDA Ratio	Test ADG	ADG Ratio					
90	548		1094	1380	2.94	109	4.24	109					
CED	BW	WW	YW	RADG	YH	SC	Doc	HP	CEM	Milk	MW	MH	\$EN
EPD	-1	+3.0	+65	+107					+4	+28			-16
ACC	0.16	0.34	0.28	0.15					0.10	0.11			
CW	Marb	RE	Fat	\$M	\$W	\$F	\$G	\$B	\$C				
EPD	+54	+0.10	+0.69	+0.024	+70	+57	+86	+26	+112	+215			
ACC	0.17	0.15	0.15	0.15									

Monogram Farms



Monogram 153 Renown 171

2

ANGUS

Hinds
Bull Test

Calved: 11/22/2023 Tattoo: 173 Reg. #: 21119592

Monogram Renown 1158
Monogram 115 Renown 1531
Monogram Elba 794
S A V Renown 3439
Monogram Rose 1918
Monogram Rose 1396

BW	Adj. WW	WW Ratio	Adj. YW	End Test Wt	Test WDA	WDA Ratio	Test ADG	ADG Ratio					
80	595		1093	1310	2.96	110	3.93	101					
CED	BW	WW	YW	RADG	YH	SC	Doc	HP	CEM	Milk	MW	MH	\$EN
EPD	-2	+3.5	+80	+133					+3	+28			-31
ACC	0.32	0.31	0.25	0.14					0.08	0.09			
CW	Marb	RE	Fat	\$M	\$W	\$F	\$G	\$B	\$C				
EPD	+64	+0	+1.11	+0.010	+77	+65	+102	+27	+129	+244			
ACC	0.17	0.15	0.15	0.14									

Monogram Farms



Monogram 115 Renown 153

3

ANGUS

Hinds
Bull Test

Calved: 11/10/2023 Tattoo: 153 Reg. #: 21119584

S A V Renown 3439
Monogram Renown 1158
Monogram Duchess 582
S A V Brilliance 8077
Monogram Elba 1385
Monogram Elba 1063

BW	Adj. WW	WW Ratio	Adj. YW	End Test Wt	Test WDA	WDA Ratio	Test ADG	ADG Ratio					
82	540		1051	1290	2.84	105	4.06	105					
CED	BW	WW	YW	RADG	YH	SC	Doc	HP	CEM	Milk	MW	MH	\$EN
EPD	+0	+2.8	+71	+116					+4	+24			-15
ACC	0.17	0.34	0.28	0.18					0.11	0.12			
CW	Marb	RE	Fat	\$M	\$W	\$F	\$G	\$B	\$C				
EPD	+50	+0.15	+0.64	+0.023	+74	+59	+83	+28	+111	+218			
ACC	0.19	0.16	0.14	0.16									

CMR Herefords



CMR 21134 200Z Merit 404L

7

Hereford

*Hinds
Bull Test*

Calved: 3/7/2024 Tattoo: 415L Reg. #: P44603932

JW X651 TESTED 1857 ET
 JW 1857 MERIT 21134
 JW 33Z VICTORIA 19027
 PW VICTOR BOOMER P606
 3D KYLLIE 200Z
 CJH MS ADVANCE 5136

BW	Adj. WW	WW Ratio	Adj. YW	End Test Wt	Test WDA	WDA Ratio	Test ADG	ADG Ratio
77			1298	1180	3.50	103	3.04	83

	CED	BW	WW	YW	DMI	Sust. Cow Fert	Milk	Milk & Growth	CEM	MW	Udder	Teat
EPD	3.9	2.4	70	109	0.4	21.2	34	69	4.2	113	1.50	1.50
ACC	0.16	0.24	0.22	0.21	0.08	0.15	0.14		0.16	0.16	0.22	0.22

	CW	Marb	RE	Fat	BMI Index	BII Index	CHB Index
EPD	84	0.40	0.58	0.022	462	570	163
ACC	0.03	0.03	0.03	0.03			

Monogram Farms



Monogram 115 Renown 1703

8

ANGUS

*Hinds
Bull Test*

Calved: 10/17/2023 Tattoo: 170 Reg. #: 21119616

S A V Renown 3439
 Monogram Renown 1158
 Monogram Duchess 582
 Monogram 212 Bismarck 41
 Monogram Elba 71
 Monogram Elba 100

BW	Adj. WW	WW Ratio	Adj. YW	End Test Wt.	Test WDA	WDA Ratio	Test ADG	ADG Ratio
76	662		952	1225	2.56	95	3.30	85

	CED	BW	WW	YW	RADG	YH	SC	Doc	HP	CEM	Milk	MW	MH	\$EN
EPD	I+2	I+1.8	I+57	I+102						I+6	I+25			-13
ACC	0.05	0.05	0.05	0.05						0.05	0.15			

	CW	Marb	RE	Fat	\$M	\$W	\$F	\$G	\$B	\$C
EPD	+43	+0.38	+0.55	-0.012	+65	+48	+81	+41	+122	+223
ACC	0.18	0.16	0.16	0.15						

Verell Farms



Balancer Bull Tag VF9

TAU Outright 162A
TJB 220Y OUTRIGHT 5125D ET
TJB Velvet 908U 220Y

9

COMMERCIAL Gelbvieh Balancer

Commercial Angus Cow

Hinds
Bull Test

Calved: 9/29/2023 Tattoo: 9 Non-registered

BW	Adj. WW	WW Ratio	Adj. YW	End Test Wt	Test WDA	WDA Ratio	Test ADG	ADG Ratio
			1116	1520	3.06	111	6.07	116

Verell Farms



Balancer Bull Tag VF8

TAU Outright 162A
TJB 220Y OUTRIGHT 5125D ET
TJB Velvet 908U 220Y

10

COMMERCIAL Gelbvieh Balancer

Commercial Angus Cow

Hinds
Bull Test

Calved: 8/24/2023 Tattoo: 8 Non-registered

BW	Adj. WW	WW Ratio	Adj. YW	End Test Wt	Test WDA	WDA Ratio	Test ADG	ADG Ratio
			1109	1620	3.04	110	5.58	107

Verell Farms



Balancer Bull Tag VF5

TAU Outright 162A
TJB 220Y OUTRIGHT 5125D ET
TJB Velvet 908U 220Y

11

COMMERCIAL Gelbvieh Balancer

Commercial Angus Cow

Hinds
Bull Test

Calved: 9/10/2023 Tattoo: 5 Non-registered

BW	Adj. WW	WW Ratio	Adj. YW	End Test Wt	Test WDA	WDA Ratio	Test ADG	ADG Ratio
			1061	1500	2.91	106	5.94	114

Verell Farms



Balancer Bull Tag VF2

TAU Outright 162A
TJB 220Y OUTRIGHT 5125D ET
TJB Velvet 908U 220Y

12

COMMERCIAL Gelbvieh Balancer

Commercial Angus Cow

Hinds
Bull Test

Calved: 9/1/2023 Tattoo: 2 Non-registered

BW	Adj. WW	WW Ratio	Adj. YW	End Test Wt	Test WDA	WDA Ratio	Test ADG	ADG Ratio
			977	1405	2.68	97	5.00	96

Verell Farms



Balancer Bull Tag VF12

13

*Hinds
Bull Test*

COMMERCIAL Gelbvieh Balancer

Calved: 9/7/2023 Tattoo: 12 Non-registered

TAU Outright 162A
TJB 220Y OUTRIGHT 5125D ET
TJB Velvet 908U 220Y

Commercial Angus Cow

BW	Adj. WW	WW Ratio	Adj. YW	End Test Wt	Test WDA	WDA Ratio	Test ADG	ADG Ratio
			932	1325	2.55	93	4.55	87

Verell Farms



Balancer Bull Tag VF7

14

*Hinds
Bull Test*

COMMERCIAL Gelbvieh Balancer

Calved: 9/16/2023 Tattoo: 7 Non-registered

TAU Outright 162A
TJB 220Y OUTRIGHT 5125D ET
TJB Velvet 908U 220Y

Commercial Angus Cow

BW	Adj. WW	WW Ratio	Adj. YW	End Test Wt	Test WDA	WDA Ratio	Test ADG	ADG Ratio
			830	1160	2.27	83	4.20	80

YNOT Ranch LLC



YNOT 80L

TAU MR IN FOCUS 22Z
INFINITY 47C
TAU MIA 363A
SECRET BRAND 2100Z ET
9406G
6281D

Lot 15

GELBVIEW BALANCER

Calved: 1/9/2023 Tattoo: 80L Reg. #: 1578062

BW	Adj. WW	WW Ratio	Adj. YW	YW Ratio	Adj. IMF	IMF Ratio	Adj. REA	REA Ratio
60	617	88	841	93				

	CED	BW	WW	YW	Milk	TM	CEM	HP	PG30
EPD	+10	+0.4	+70	+106	+25	+60	+5	+10.82	-0.05
ACC	0.21	0.26	0.26	0.30	0.20		0.18	0.18	0.10

	STAY	DOC	SC	YG	CW	CREA	MARB	CFAT	FPI
EPD	+18	+7	+0.16	-0.10	+29	+0.49	+0.48	-0.01	81.61
ACC	0.14	0.16	0.17	0.16	0.22	0.19	0.23	0.15	

YNOT Ranch LLC



YNOT 79L

BENNETT E158
TOP SHELF 150H ET
MS GUNNISON 106R 3051A
SECRET LINK 214D98
W90H
W1138F

Lot 16

GELBVIEW BALANCER

Calved: 1/9/2023 Tattoo: 79L Reg. #: 1578063

BW	Adj. WW	WW Ratio	Adj. YW	YW Ratio	Adj. IMF	IMF Ratio	Adj. REA	REA Ratio
57	653	94	894	99				

	CED	BW	WW	YW	Milk	TM	CEM	HP	PG30
EPD	+15	-1.0	+75	+116	+18	+55	+8	+5.25	-1.02
ACC	0.23	0.26	0.31	0.32	0.14		0.15	0.06	0.01

	STAY	DOC	SC	YG	CW	CREA	MARB	CFAT	FPI
EPD	+12	+12	+0.85	-0.32	+37	+0.90	+0.20	-0.06	81.44
ACC	0.12	0.18	0.15	0.16	0.22	0.19	0.12	0.13	

YNOT Ranch LLC



YNOT 76L

NEW FRONTIER 33A ET
AMERICAN OUTLAW
MISS FORTUNE C015 ET
SECRET BRAND 2100Z ET
9402G
5254C

Lot 17

GELBVIEW BALANCER

Calved: 1/6/2023 Tattoo: 76L Reg. #: 1578057

BW	Adj. WW	WW Ratio	Adj. YW	YW Ratio	Adj. IMF	IMF Ratio	Adj. REA	REA Ratio
52	654	106	851	100				

	CED	BW	WW	YW	Milk	TM	CEM	HP	PG30
EPD	+10	+2.0	+79	+117	+14	+53	+6	+11.59	+2.06
ACC	0.19	0.29	0.26	0.26	0.16		0.14	0.08	0.05

	STAY	DOC	SC	YG	CW	CREA	MARB	CFAT	FPI
EPD	+14	+10	+0.69	-0.12	+42	+0.59	+0.52	-0.03	85.21
ACC	0.13	0.18	0.130	0.13	0.18	0.16	0.14	0.12	

G&R Farms



G294 ROCK

ANGUS

Calved: 12/12/2023 Tattoo: G294 Reg. #: 21112724

DEER VALLEY GROWTH FUND
EXAR STOCK FUND
EXAR EMPRESS 0875
MUSGRAVE 316 EXCLUSIVE
GR58 MARNIE
SSP HERMIONE 9061 K241

Lot 18

BW	Adj. WW	WW Ratio	Adj. YW	YW Ratio	Adj. IMF	IMF Ratio	Adj. REA	REA Ratio						
64	576	99	1362	118										
	CED	BW	WW	YW	RADG	DMI	YH	SC	HP	CEM	Milk	MW	MH	\$EN
EPD	+12	+0.7	+83	+160	+0.35	+1.84	+0.5	-0.03	+11.3	+6	+27	+115	+0.6	-43
ACC	0.36	0.55	0.47	0.42	0.32	0.32	0.46	0.40	0.24	0.32	0.33	0.38	0.41	
	CW	Marb	RE	Fat	\$M	\$W	\$F	\$G	\$B	\$C				
EPD	+60	+0.61	+0.93	-0.015	48	73	99	56	156	250				
ACC	0.40	0.38	0.36	0.34										

G&R Farms



G289 BASIN

ANGUS

Calved: 9/03/2023 Tattoo: G289 Reg. #: 21145261

DEER VALLEY GROWTH FUND
EXAR STOCK FUND 9097B
EXAR EMPRESS 0875
SPRING COVE PAYGRADE 5064
GR73 BIG EYE RITA
BLACK LADY GR67

Lot 19

BW	Adj. WW	WW Ratio	Adj. YW	YW Ratio	Adj. IMF	IMF Ratio	Adj. REA	REA Ratio						
75	581	100	1263	100										
	CED	BW	WW	YW	RADG	DMI	YH	SC	HP	CEM	Milk	MW	MH	\$EN
EPD	I+7	I+1.8	I+79	I+134	I+0.28	I+1.03	I+0.4	I+1.02	I+13.1	I+3	I+29	I+70	I+0.3	-22
ACC	0.05	0.05	0.05	0.05	0.05	0.05	0.05	0.05	0.05	0.05	0.05	0.05	0.05	
	CW	Marb	RE	Fat	\$M	\$W	\$F	\$G	\$B	\$C				
EPD	I+56	I+0.76	I+0.98	I+0.009	68	80	102	62	164	281				
ACC	0.05	0.05	0.05	0.05										

MSU Beef Unit



MSU Justified L170

ANGUS

Calved: 10/22/2023 Tattoo: L170 Reg. #: 20847240

GDAR JUSTIFIED 914
RC JUSTIFIED J129
RC MISS SHAMROCK E107
BASIN EXCITEMENT
MSU BLACKBIRD E074
MSU BLACKBIRD 4233 Z103

Lot 20

BW	Adj. WW	WW Ratio	Adj. YW	YW Ratio	Adj. IMF	IMF Ratio	Adj. REA	REA Ratio						
90	613	115	1005	107	2.45	90	15.3	120						
	CED	BW	WW	YW	RADG	DMI	YH	SC	HP	CEM	Milk	MW	MH	\$EN
EPD	+4	+1.8	+69	+112	+0.21	+0.78	+0.7	+0.10	+14.5	+11	+29	+47	+0.4	-10
ACC	0.32	0.54	0.45	0.40	0.30	0.30	0.44	0.46	0.20	0.26	0.29	0.37	0.40	
	CW	Marb	RE	Fat	\$M	\$W	\$F	\$G	\$B	\$C				
EPD	+46	+0.13	+0.75	+0.017	86	73	83	29	112	231				
ACC	0.38	0.36	0.35	0.33										

MSU Beef Unit



MSU JUSTIFIED L167

GDAR JUSTIFIED 914
 RC JUSTIFIED J129
 RC MISS SHAMROCK E107
 S A V FINAL ANSWER 0035
 MSU BLACKBIRD C088
 MSU BLACKBIRD U155

Lot 21

ANGUS

Calved: 10/18/2023 Tattoo: L167 Reg. #: 20847238

BW	Adj. WW	WW Ratio	Adj. YW	YW Ratio	Adj. IMF	IMF Ratio	Adj. REA	REA Ratio						
78	580	109	1033	110	2.31	85	12.9	101						
	CED	BW	WW	YW	RADG	DMI	YH	SC	HP	CEM	Milk	MW	MH	\$EN
EPD	+1	+3.1	+73	+132	+0.30	+0.94	+0.9	+1.53	+19.1	+8	+29	+88	+0.7	-31
ACC	0.32	0.54	0.45	0.40	0.30	0.30	0.44	0.46	0.20	0.26	0.29	0.37	0.40	
	CW	Marb	RE	Fat	\$M	\$W	\$F	\$G	\$B	\$C				
EPD	+50	+0.33	+0.65	+0.014	65	64	91	37	129	232				
ACC	0.37	0.35	0.34	0.32										

MSU Beef Unit



MSU JUSTIFIED L163

GDAR JUSTIFIED 914
 RC JUSTIFIED J129
 RC MISS SHAMROCK E107
 S A V RESOURCE 1441
 MSU TRAVELER F071
 MSU TRAVELER A091

Lot 22

ANGUS

Calved: 10/15/2023 Tattoo: L163 Reg. #: 20847236

BW	Adj. WW	WW Ratio	Adj. YW	YW Ratio	Adj. IMF	IMF Ratio	Adj. REA	REA Ratio						
78	566	106	961	102	2.03	74	12.2	95						
	CED	BW	WW	YW	RADG	DMI	YH	SC	HP	CEM	Milk	MW	MH	\$EN
EPD	+2	+2	+73	+127	+0.25	+1.33	+0.6	+2.26	+15.6	+3	+35	+68	+0.4	-24
ACC	0.31	0.53	0.44	0.39	0.30	0.30	0.43	0.46	0.20	0.26	0.28	0.37	0.39	
	CW	Marb	RE	Fat	\$M	\$W	\$F	\$G	\$B	\$C				
EPD	+57	+0.04	+0.35	+0.044	75	77	97	20	117	227				
ACC	0.37	0.35	0.34	0.32										

MSU Beef Unit



MSU TAHOE L114

TEHAMA UPWARD Y238
 TEHAMA TAHOE B767
 TEHAMA MARY BLACKBIRD Y684
 TPC 303
 TPC MISS RELENTLESS 528
 R&R BLACKBIRD 1158

Lot 23

ANGUS

Calved: 9/18/2023 Tattoo: L114 Reg. #: 20939497

BW	Adj. WW	WW Ratio	Adj. YW	YW Ratio	Adj. IMF	IMF Ratio	Adj. REA	REA Ratio						
74	585	110	998	107	3.77	138	15.3	120						
	CED	BW	WW	YW	RADG	DMI	YH	SC	HP	CEM	Milk	MW	MH	\$EN
EPD	+11	-0.6	+85	+145	+0.27	+1.84	+0.6	+0.93	+12.2	+6	+28	+37	+0.5	-5
ACC	0.34	0.54	0.46	0.41	0.33	0.33	0.45	0.46	0.24	0.30	0.33	0.40	0.43	
	CW	Marb	RE	Fat	\$M	\$W	\$F	\$G	\$B	\$C				
EPD	+64	+1.12	+1.01	-0.004	97	94	101	81	182	333				
ACC	0.39	0.38	0.37	0.35										

MSU Beef Unit



MSU TAHOE L092

TEHAMA UPWARD Y238
 TEHAMA TAHOE B767
 TEHAMA MARY BLACKBIRD Y684
 HOOVER COUNSELOR N29
 MSU FOREVER LADY J131
 MSU FOREVER LADY G082

Lot 24

ANGUS

Calved: 9/05/2023 Tattoo: L092 Reg. #: 20939483

BW	Adj. WW	WW Ratio	Adj. YW	YW Ratio	Adj. IMF	IMF Ratio	Adj. REA	REA Ratio						
65	561	105	991	106	3.46	127	14.0	109						
CED	BW	WW	YW	RADG	DMI	YH	SC	HP	CEM	Milk	MW	MH	\$EN	
EPD	+7	+1.3	+68	+115	+0.23	+0.72	+0.7	+1.04	+16.1	+6	+28	+43	+0.1	-8
ACC	0.36	0.52	0.45	0.40	0.32	0.32	0.43	0.45	0.24	0.30	0.31	0.39	0.42	
CW	Marb	RE	Fat	\$M	\$W	\$F	\$G	\$B	\$C					
EPD	+44	+1.15	+0.31	+0.033	82	72	86	71	157	286				
ACC	0.38	0.36	0.36	0.34										

Fulper Angus Farm



FULPER GRATITUDE L29

CASINO BOMBER N33
 K C F BENNETT EXPONENTIAL
 K C F MISS SOUTHSIDE B226
 A A R TEN X 7008 S A
 FULPER ENTELLA 081
 FULPER ENTELLA 138

Lot 25

ANGUS

Calved: 11/05/2023 Tattoo: L29 Reg. #: 21043786

BW	Adj. WW	WW Ratio	Adj. YW	YW Ratio	Adj. IMF	IMF Ratio	Adj. REA	REA Ratio						
70	638	105												
CED	BW	WW	YW	RADG	DMI	YH	SC	HP	CEM	Milk	MW	MH	\$EN	
EPD	+11	+1	+71	+128	+0.29	+1.42	+0.8	+1.98	+10.4	+13	+36	+102	+0.7	-42
ACC	0.34	0.52	0.43	0.37	0.31	0.31	0.43	0.38	0.25	0.30	0.31	0.36	0.39	
CW	Marb	RE	Fat	\$M	\$W	\$F	\$G	\$B	\$C					
EPD	+72	+0.95	+0.85	-0.036	44	72	119	73	192	293				
ACC	0.38	0.36	0.35	0.33										

Fulper Angus Farm



FULPER GOALKEEPER L22

SYDGEN ENHANCE
 BALDRIDGE SR GOALKEEPER
 BALDRIDGE ISABEL E030
 BALDRIDGE COLONEL C251
 CCC LUCY 062
 CCC LUCY 1122

Lot 26

ANGUS

Calved: 7/18/2023 Tattoo: L22 Reg. #: 21043781

BW	Adj. WW	WW Ratio	Adj. YW	YW Ratio	Adj. IMF	IMF Ratio	Adj. REA	REA Ratio						
80	768	100												
CED	BW	WW	YW	RADG	DMI	YH	SC	HP	CEM	Milk	MW	MH	\$EN	
EPD	-3	+4.3	+80	+152	+0.34	+1.84	+0.7	+1.57	+8.2	+1	+29	+95	+0.7	-34
ACC	0.36	0.52	0.41	0.37	0.31	0.31	0.43	0.38	0.25	0.31	0.32	0.37	0.40	
CW	Marb	RE	Fat	\$M	\$W	\$F	\$G	\$B	\$C					
EPD	+57	+0.66	+0.86	-0.004	53	65	95	57	152	250				
ACC	0.35	0.35	0.33	0.31										

R&K Cattle Co.



R AND K'S HICKOK

G A R RELIANT
R AND K'S RELIANT
MISS JRW 5066A
S D S GRADUATE 006X
R AND K'S COWGIRL
RYALS MISS A105

SIMANGUS

Lot 30

Calved: 11/07/2023 Tattoo: L31 Reg. #: 4409012

BW	Adj. WW	WW Ratio	Adj. YW	YW Ratio	Adj. IMF	IMF Ratio	Adj. REA	REA Ratio
72	712	107	948	100				

	CE	BW	WW	YW	ADG	MCE	Milk	MWW	Stay	Doc
EPD	+13.1	+0.3	+81.5	+128.1	+0.29	+6.1	+25.7	+66.4	+16.3	+11.9
ACC	0.19	0.28	0.27	0.28	0.28	0.14	0.12	0.19	0.12	0.14

	CW	YG	Marb	BF	REA	SF	API	TI
EPD	+46.1	-0.21	+0.38	-0.036	+0.86	-0.4	139.6	84.3
ACC	0.18	0.14	0.14	0.13	0.17	0.02		