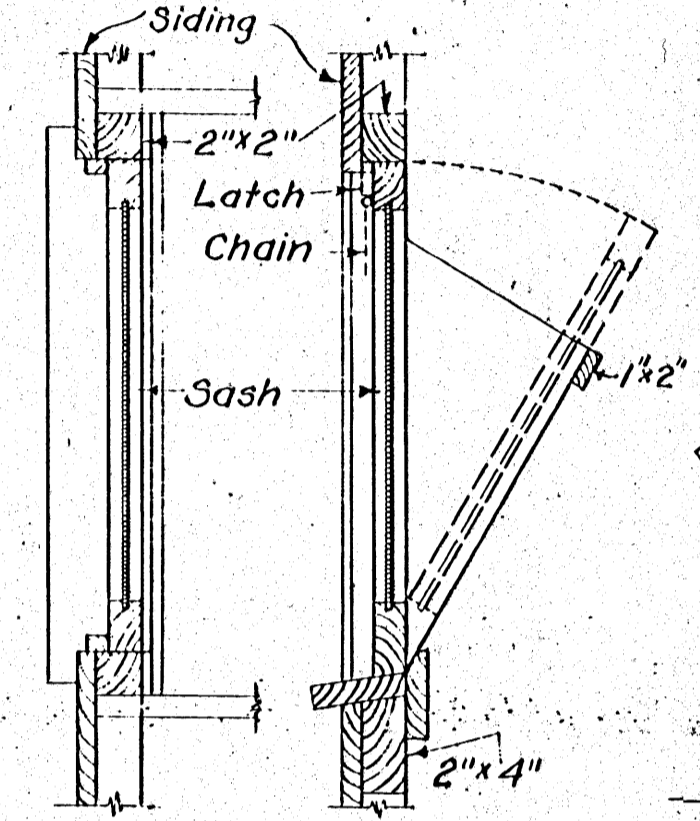


END CENTER  
FENDER DETAILS  
Scale  $\frac{3}{4}'' = 1'-0''$

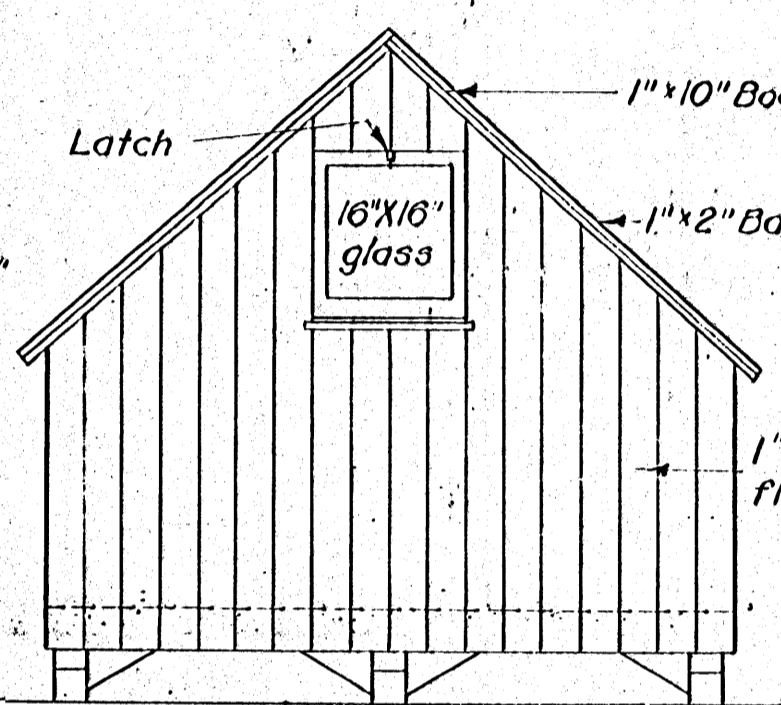
SECTION A-A  
FRONT ELEVATION  
RIGHT ELEVATION

**BILL OF MATERIALS**

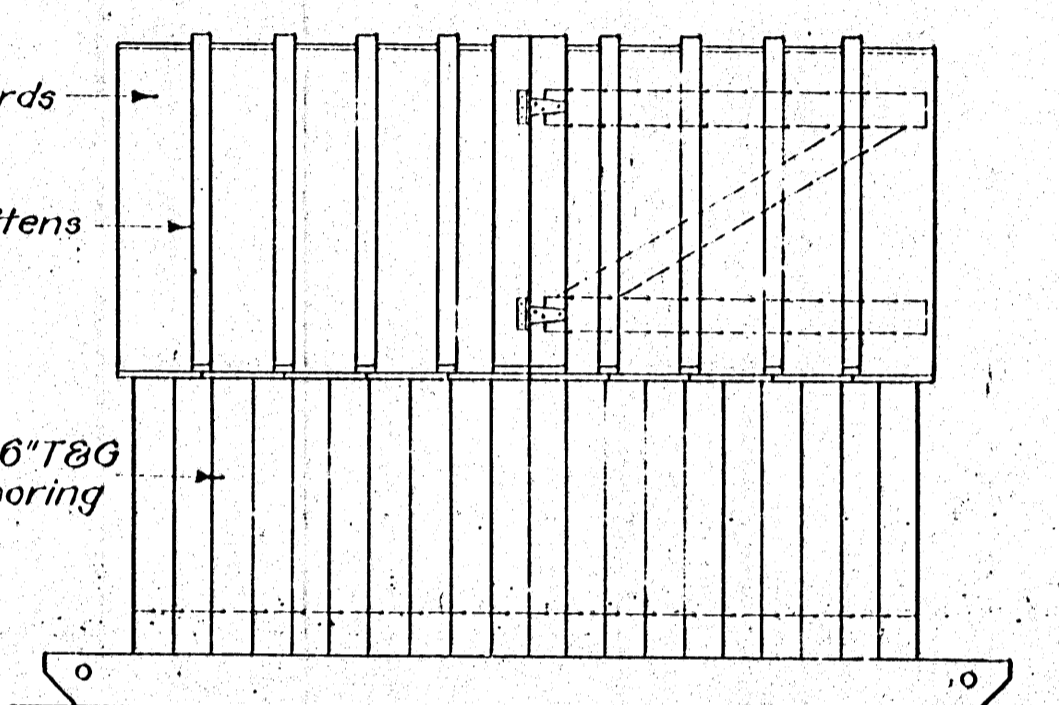
- 3 - 4"x6"x10' Runners
  - 1 - 2"x6"x8' Ridge board
  - 1 - 2"x4"x4' Plate & Bridging
  - 7 - 2"x4"x10' Braces & rafters
  - 9 - 2"x4"x8' Fenders, studs, plate & joist closures
  - 5 - 2"x4"x7' Joists
  - 3 - 2"x4"x5' Studs
  - 1 - 2"x2"x10' Window framing
  - 9 - 1"x2"x10' Roof battens & window stops
  - 2 - 1"x6"x10' " "
  - 1 - 1"x4"x14' Door " "
  - 1 - 1"x4"x12' " & window trim
  - 10 - 1"x10"x10' Roof boards
  - 200 Ft. B.M. 1"x6" T & G floor, siding, (includes 10% waste)
  - 1 - Window (glass only) 12"x14"
  - 1 - Window sash, one light 16"x16"
  - 3 - Pairs 6" Tee hinges
  - 1 - Door latch
  - 1 - Window latch
  - 2 - 1/2"x3/16"x6" W.I. fender straps
- Nails & paint not included



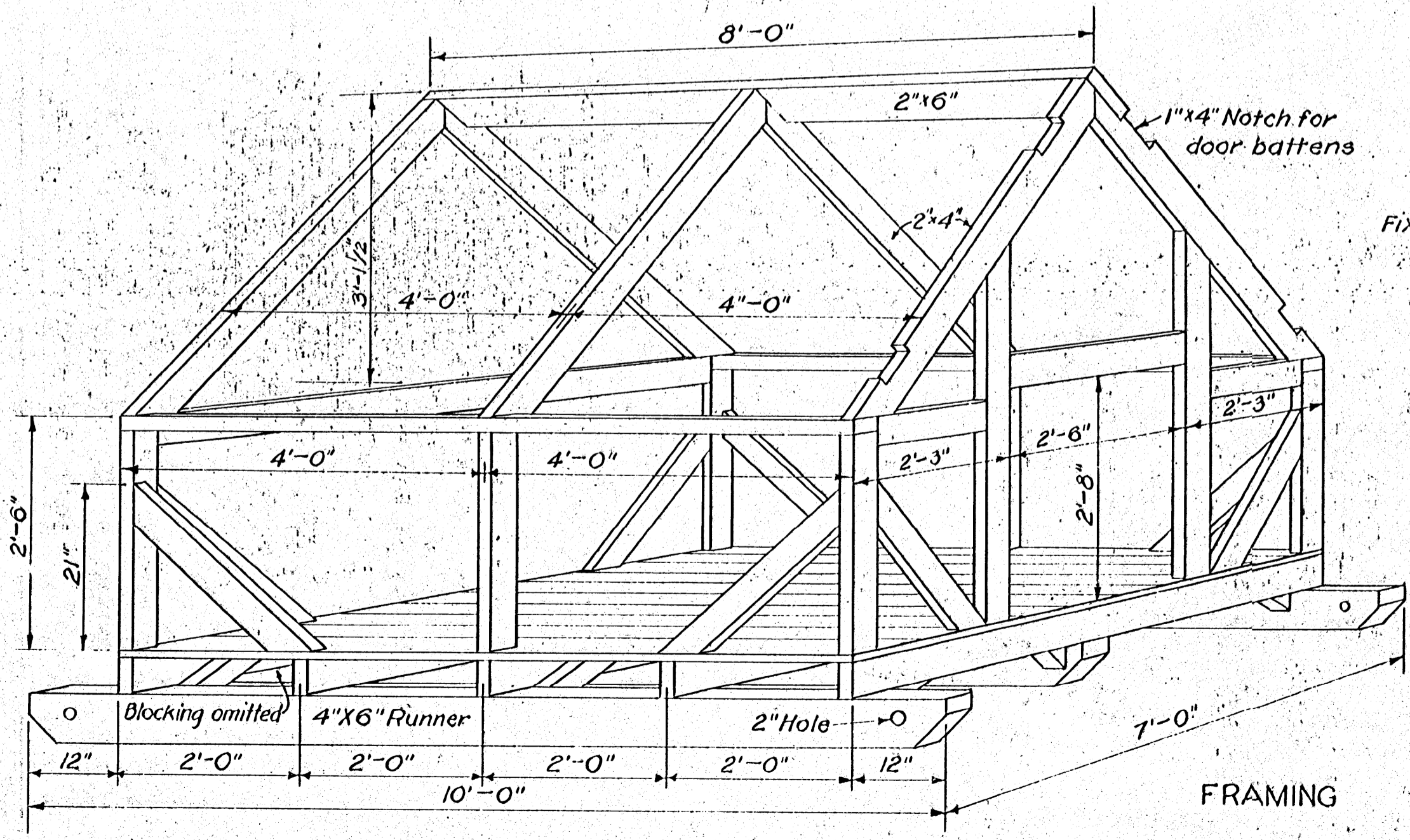
PLAN SECTION  
TILTING REAR WINDOW  
Scale  $\frac{1}{2}'' = 1'-0''$



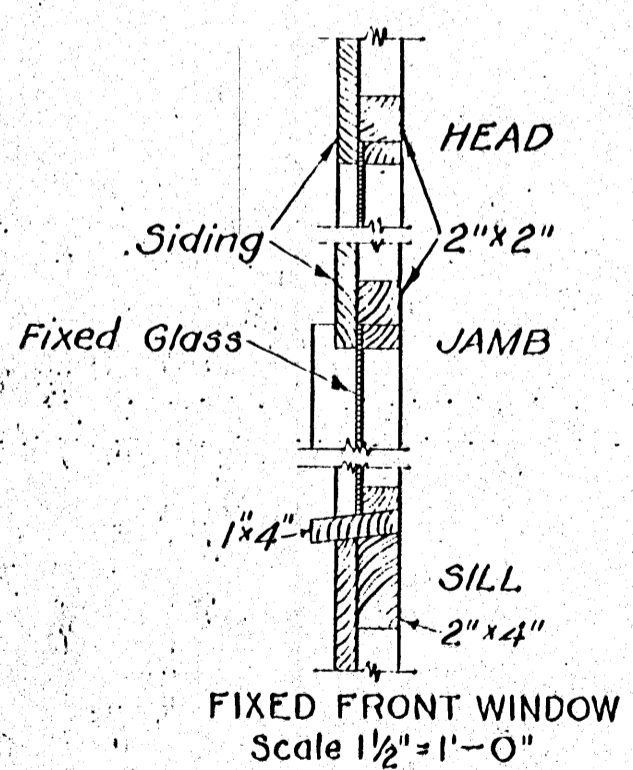
REAR ELEVATION  
Scale  $\frac{1}{2}'' = 1'-0''$



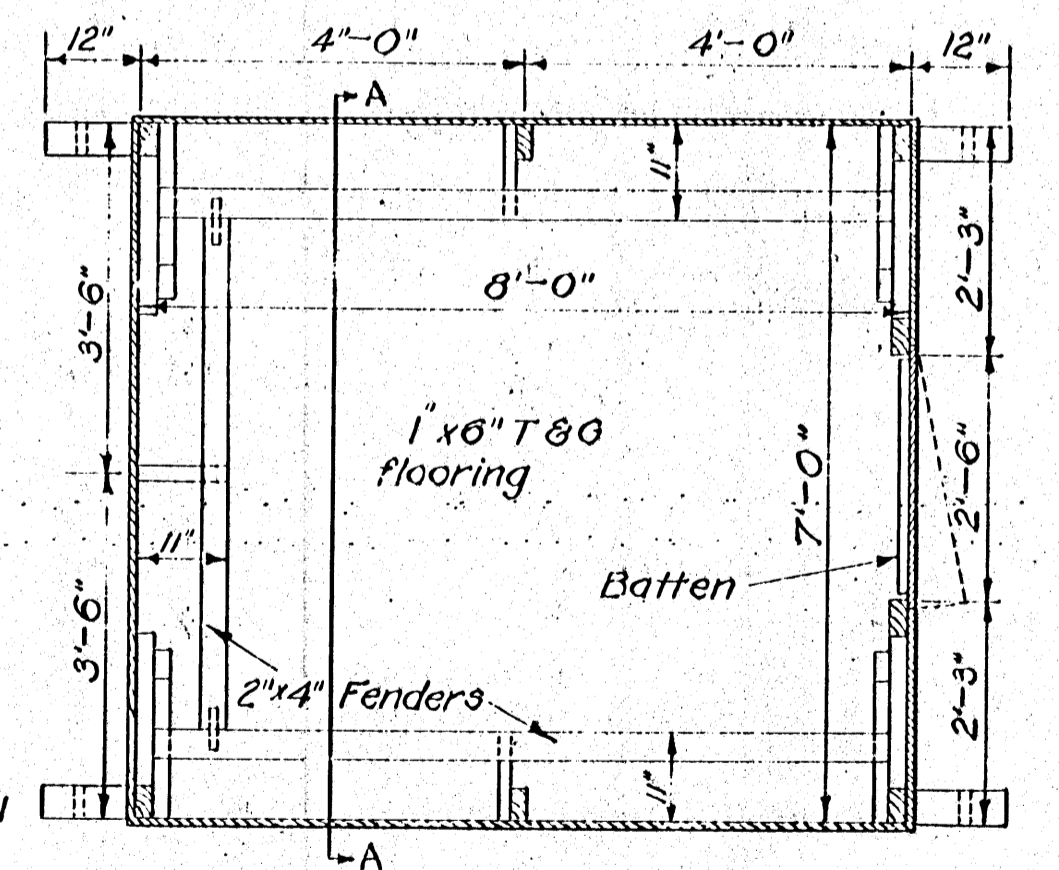
LEFT ELEVATION



FRAMING



FIXED FRONT WINDOW  
Scale  $\frac{1}{2}'' = 1'-0''$



PLAN

COOPERATIVE EXTENSION WORK IN  
AGRICULTURE AND HOME ECONOMICS

AND  
U.S. DEPT. OF AGRICULTURE COOPERATING

**HOG HOUSE**  
U.S.D.A. EX. 5065 SHEET 1 OF 1