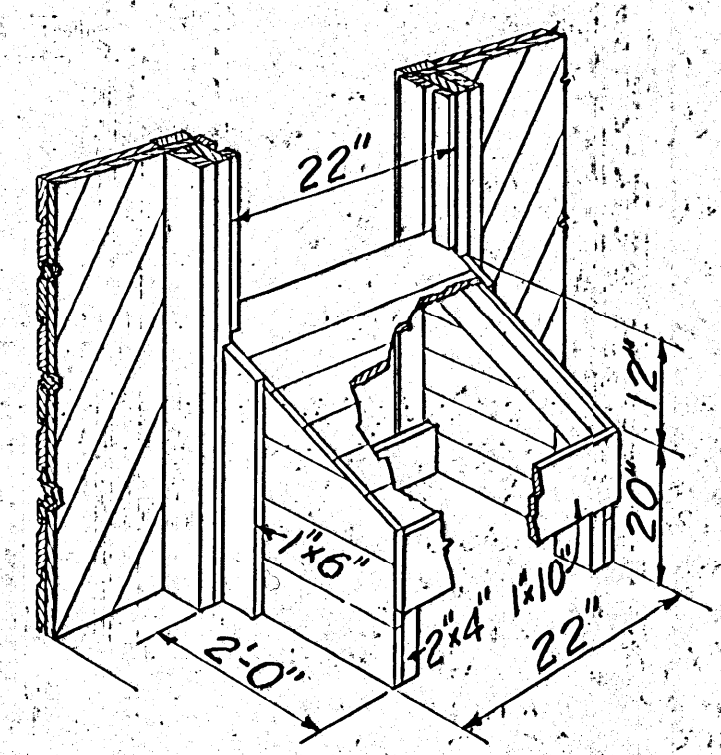
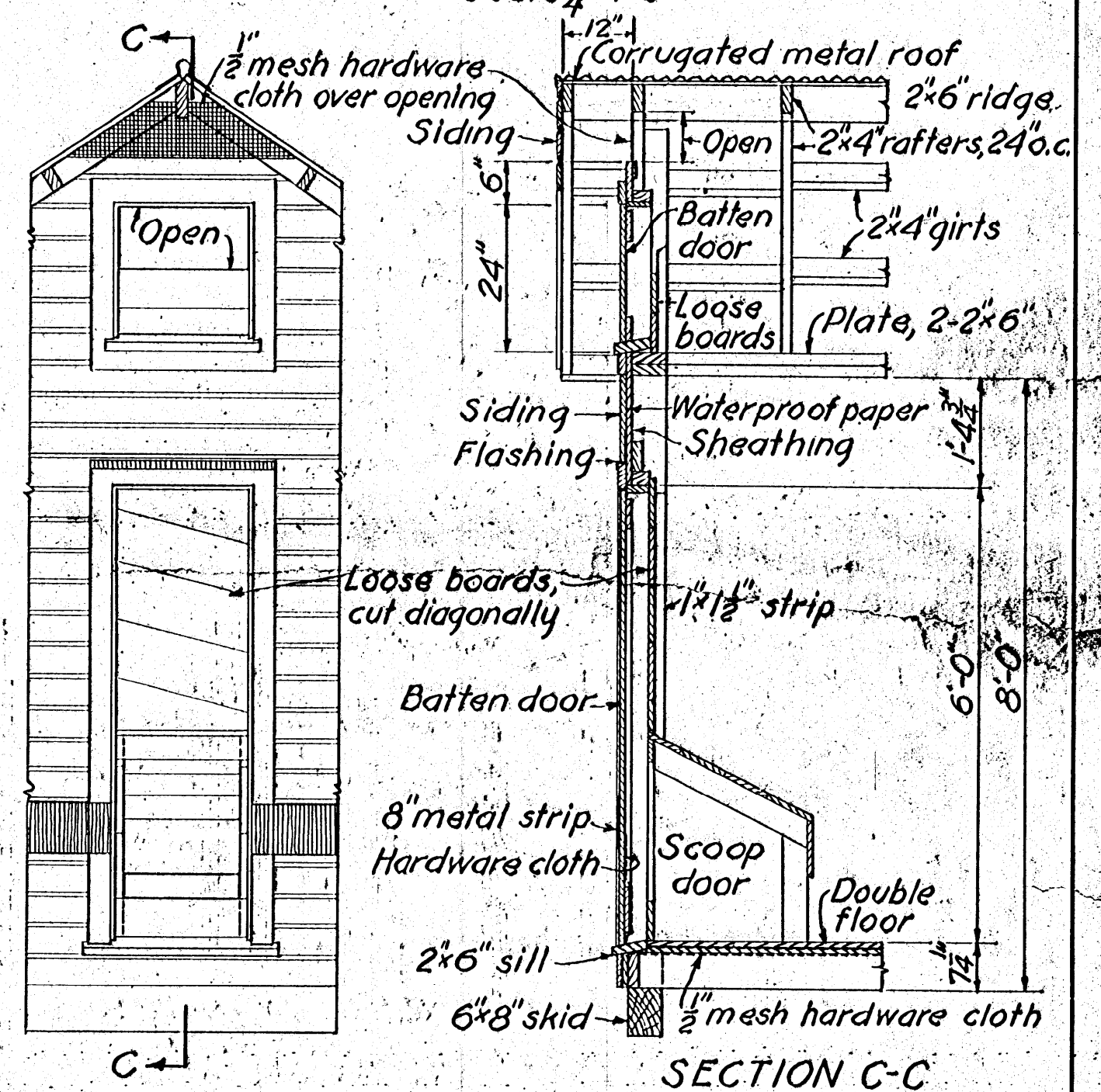
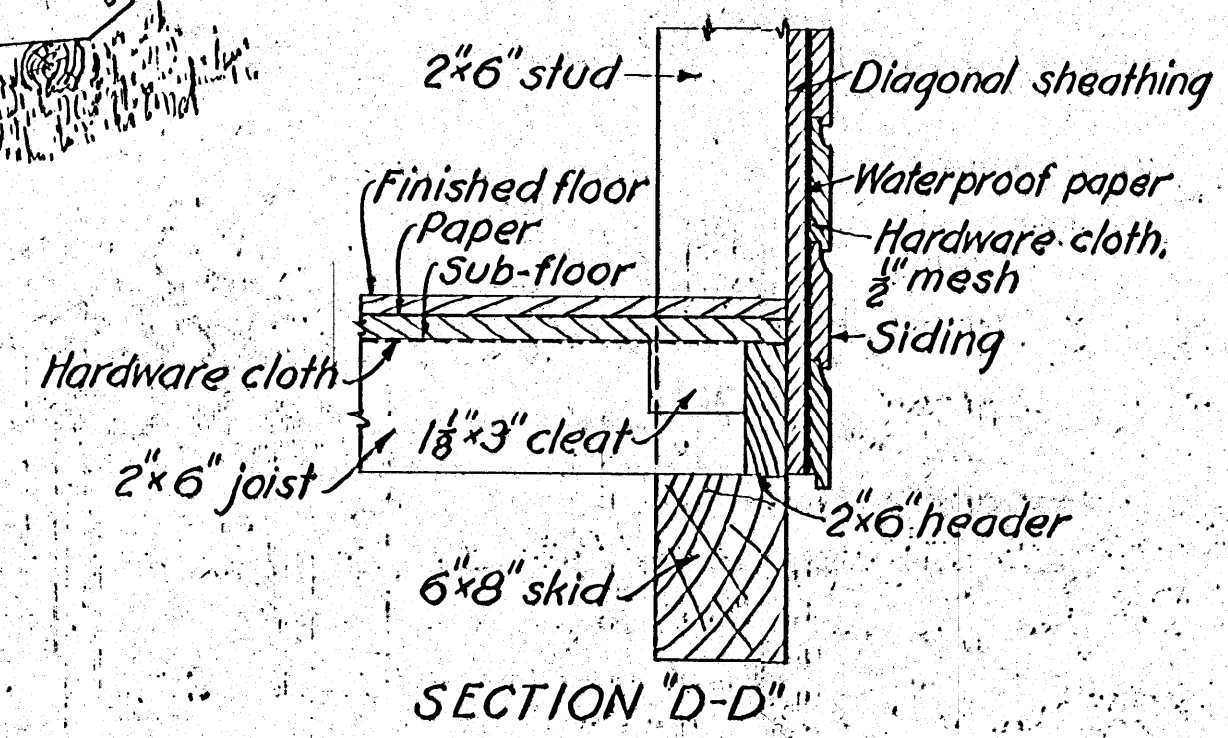
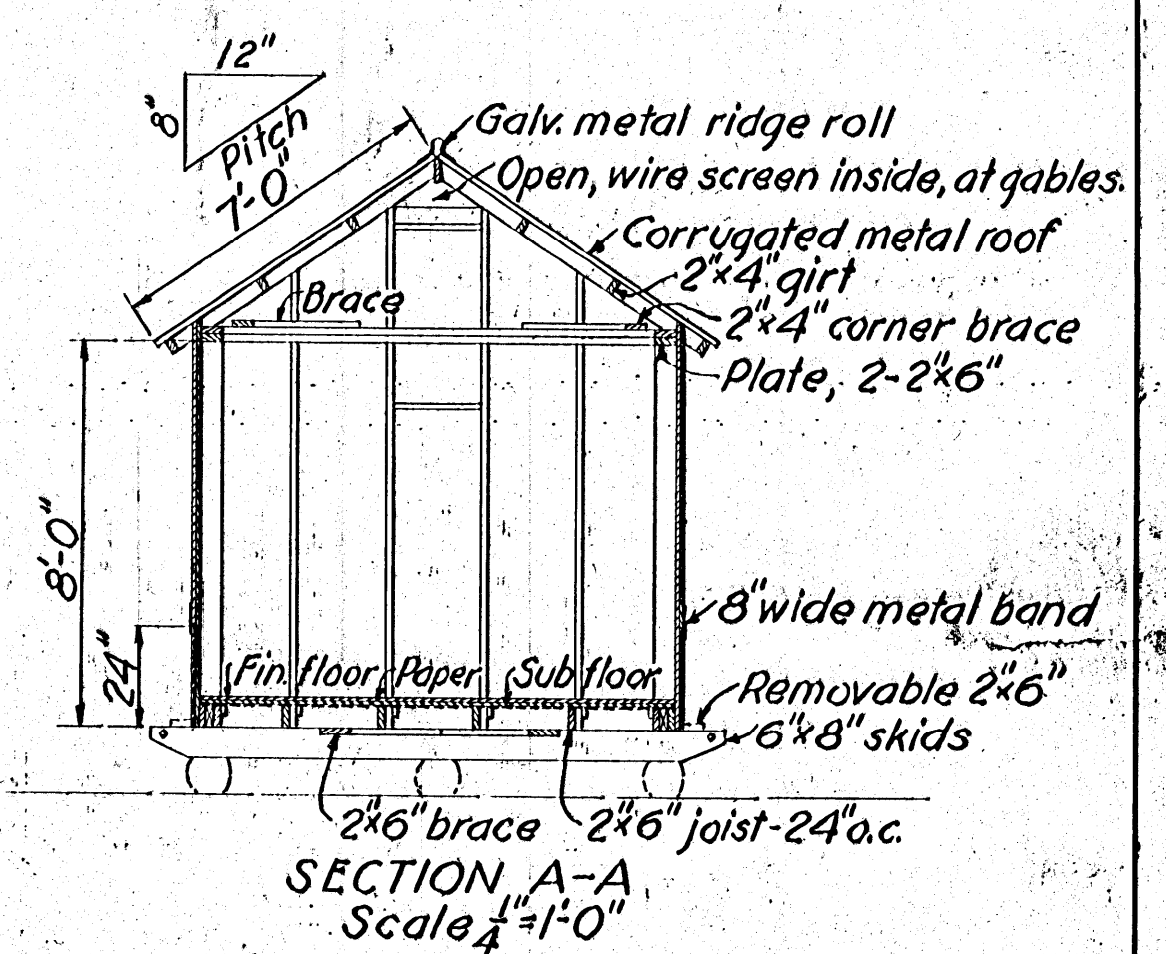
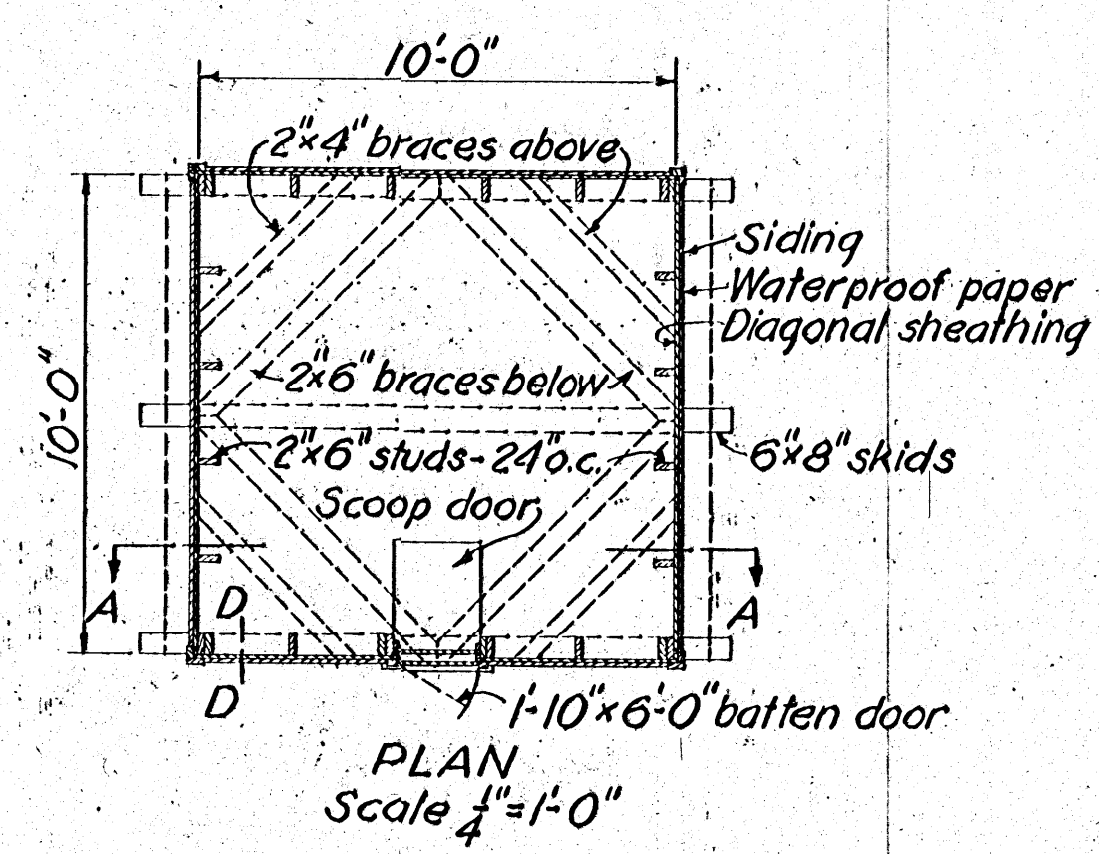


PERSPECTIVE



BILL OF MATERIAL

- 3 - 6x8x12'-0" - skids.
- 2 - 2x6x12'-0" - ridge & headers
- 20 - 2x6x10'-0" - joists, plates, & spreaders.
- 15 - 2x6x16'-0" - studs & braces.
- 8 - 2x4x14'-0" - rafters.
- 6 - 2x4x12'-0" - girts.
- 3 - 2x4x10'-0" - braces & misc. framing.
- 100 - 1/2" mesh hardware cloth.
- 40 - 1/2" mesh hardware cloth.
- 675 ft. B.M. T & G. sheathing - walls, sub-floor, etc.
- 150 ft. B.M. T & G. Flooring - finished floor, & doors.
- 500 ft. B.M. Drop siding.
- 2 - 216 ft. rolls - Waterproof building paper
- 2 - Door sills - 2'-8" long.
- 12 pieces - #26 ga corrugated metal - 7'-0" long - roof.
- 200 sq. ft. 1/2" mesh hardware cloth.
- 46 lin. ft. - 8" wide, 28 ga. galv. metal strips.
- 12 lin. ft. - Galv. metal ridge roll.
- 3 - 6" Tee hinges.
- 2 - 4" Tee hinges.
- 2 - Hasps.

Nails, paint, and log sills not included in above list.

CAPACITY - 500 BUSHELS

COOPERATIVE EXTENSION WORK IN  
AGRICULTURE AND HOME ECONOMICS

STATE OF MISSISSIPPI  
MISSISSIPPI STATE UNIVERSITY  
U. S. DEPT. OF AGRICULTURE COOPERATING

MOVABLE GRANARY (500 BU)

U.S.D.A. EX. 5530 SHEET 1 OF 1

732