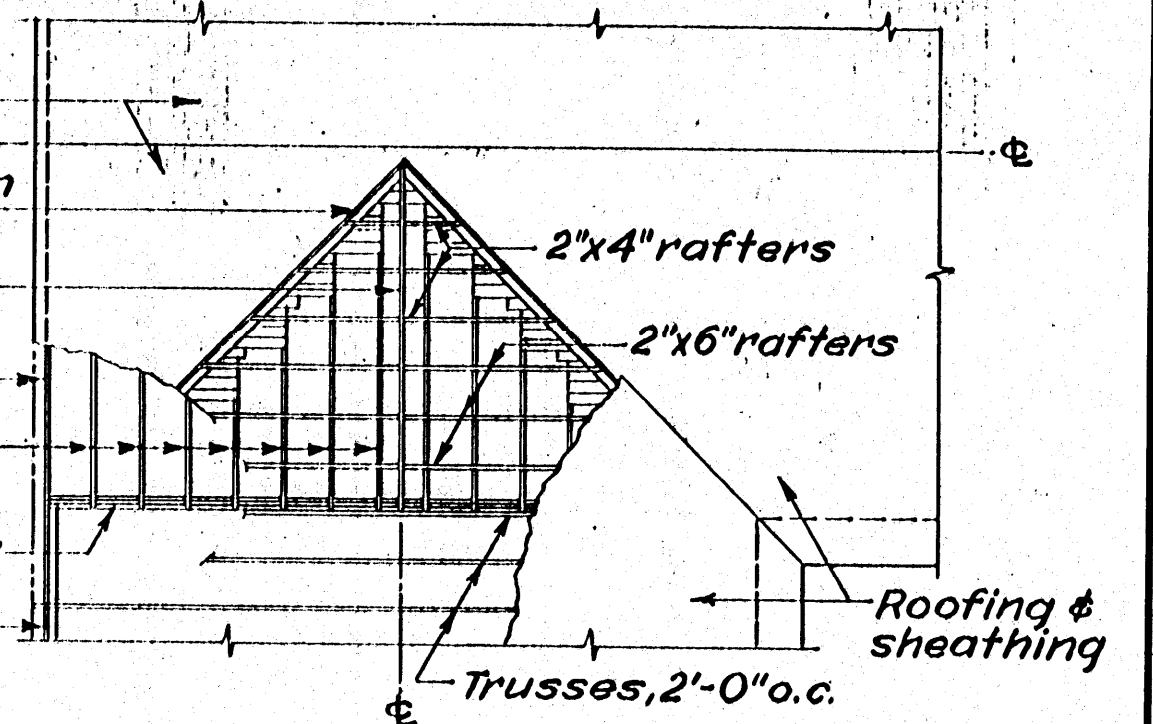


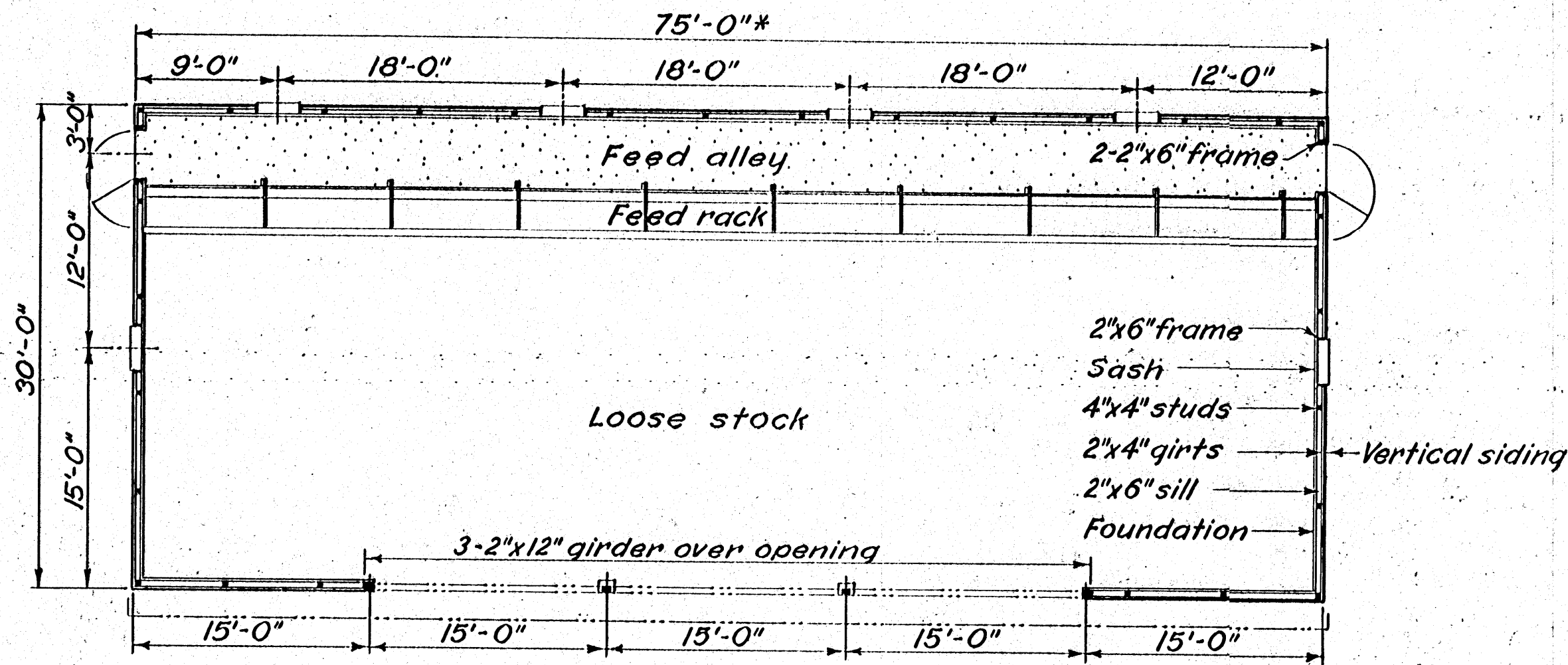
2"x4" diagonal braces
at all corners

PERSPECTIVE

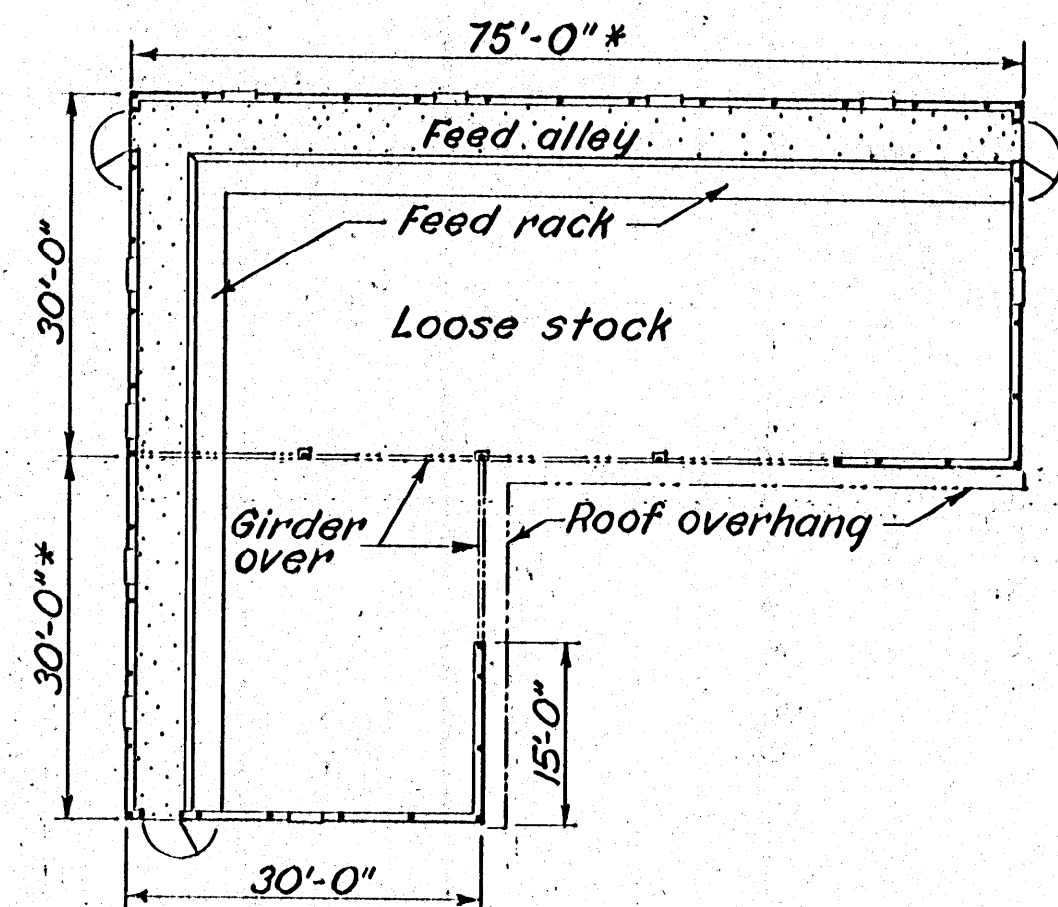
Roofing & sheathing
2"x4" plate on sheathing
2"x8" ridge
2"x4" end rafter
Trusses 2'-0" o.c.
3-2"x12" girder
Ribbon & plate



ROOF FRAMING AT ELL
Scale: 1/8" = 1'-0"



PLAN
Scale: 1/8" = 1'-0"



PLAN WITH ELL
Scale: 1/16" = 1'-0"

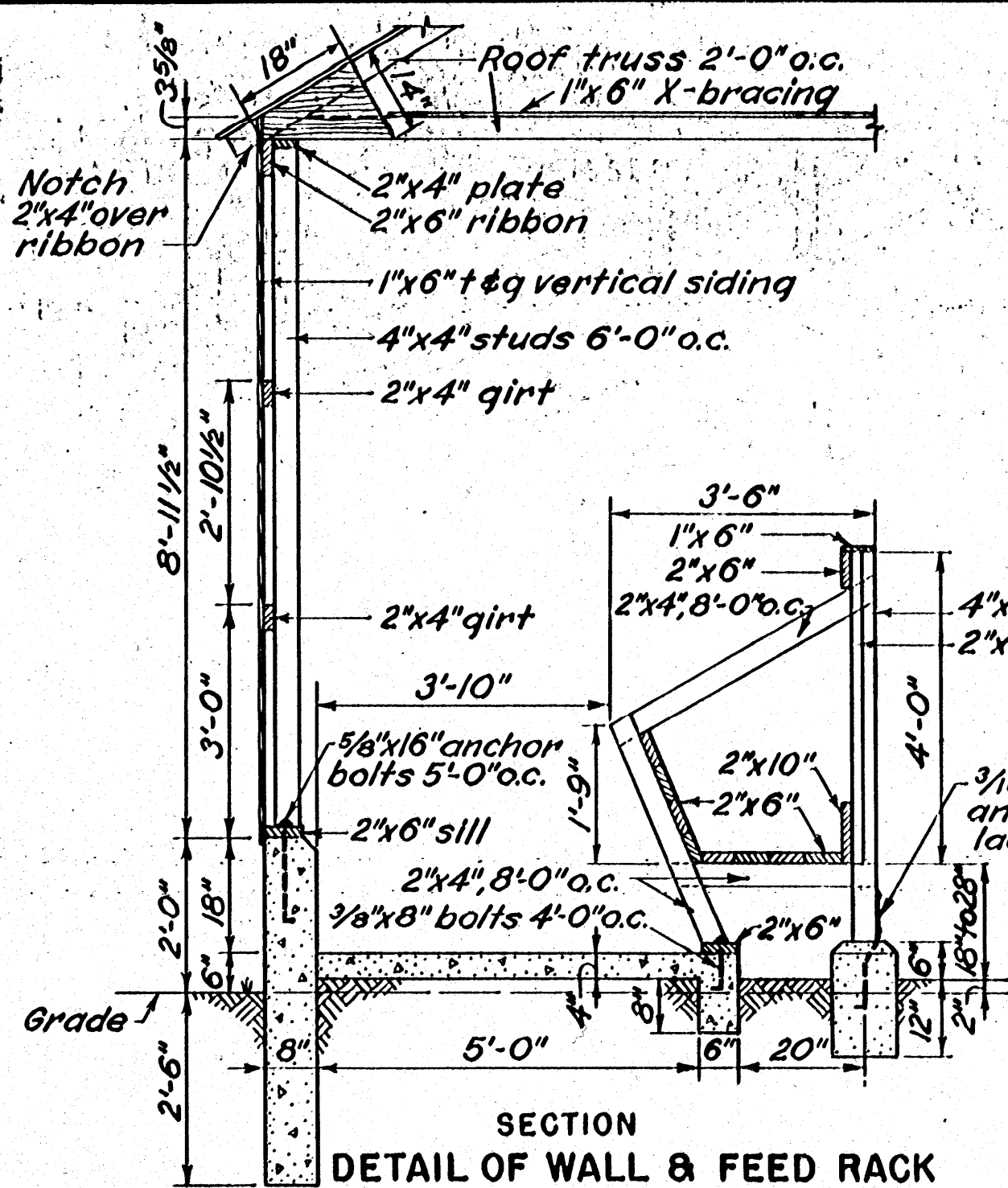
NOTE: Shed can be built any desired length in multiples of 15 feet. Variable dimensions are marked with an asterisk (*).

If feed racks are omitted and openings equipped with sliding doors, this building is suitable for use as a machinery shed.

COOPERATIVE EXTENSION WORK IN
AGRICULTURE AND HOME ECONOMICS
STATE OF MISSISSIPPI
MISSISSIPPI STATE UNIVERSITY
UNITED STATES DEPARTMENT OF AGRICULTURE COOPERATING

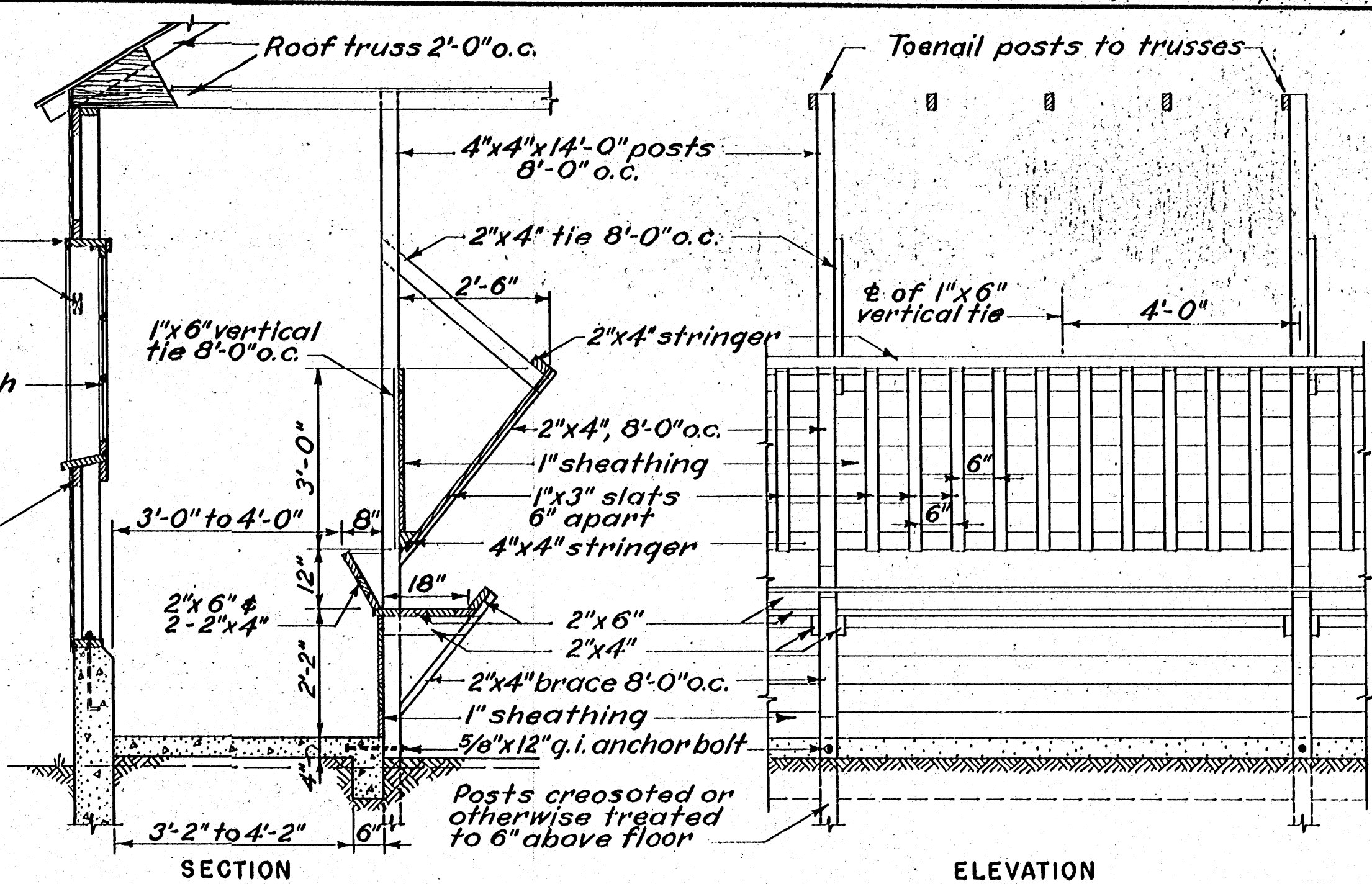
CATTLE SHED

USDA '49 EX. 5676 SHEET 1 OF 2.



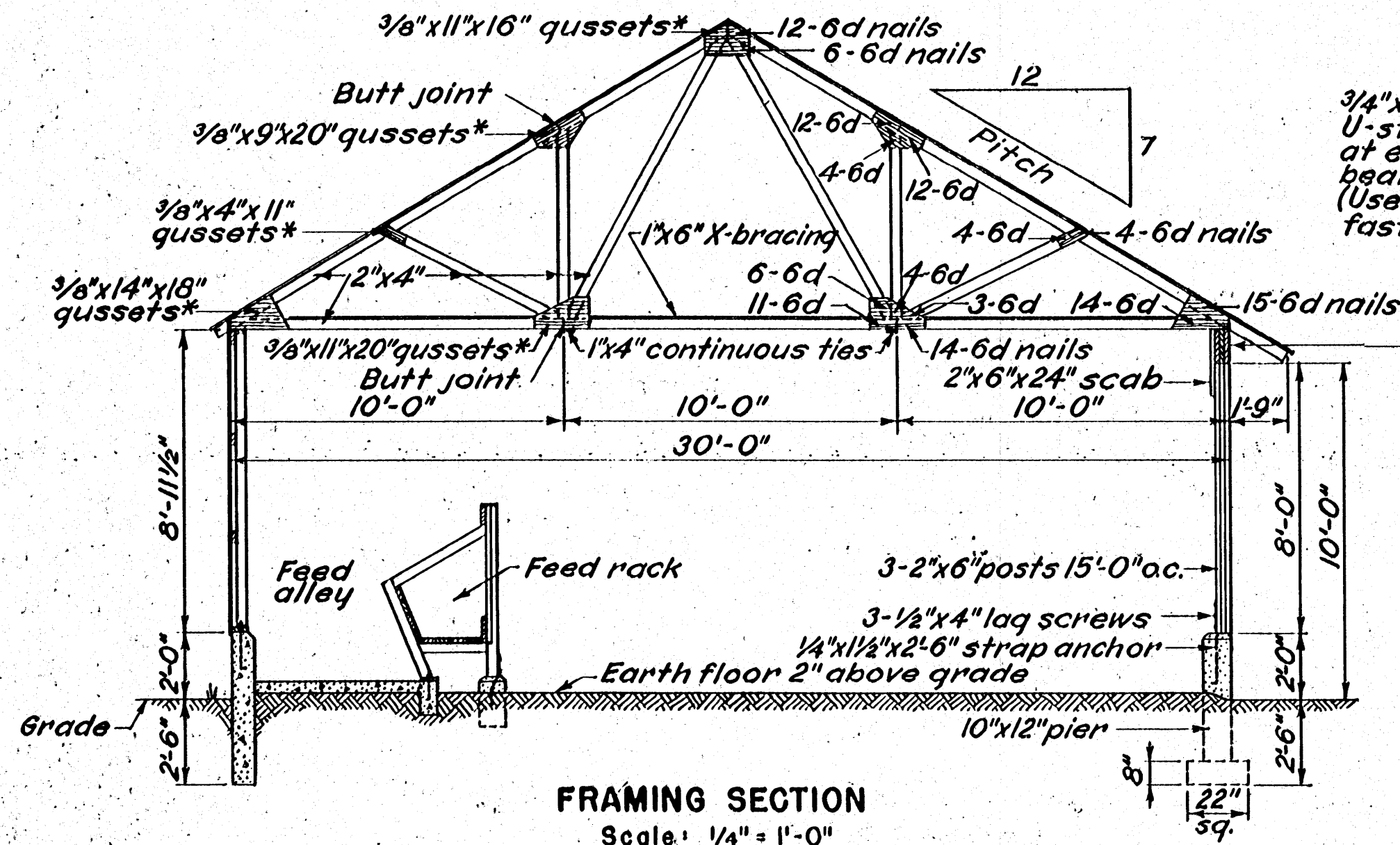
SECTION
DETAIL OF WALL & FEED RACK

Scale: 1/2" = 1'-0"



SECTION
DETAIL OF ALTERNATE FEED RACK

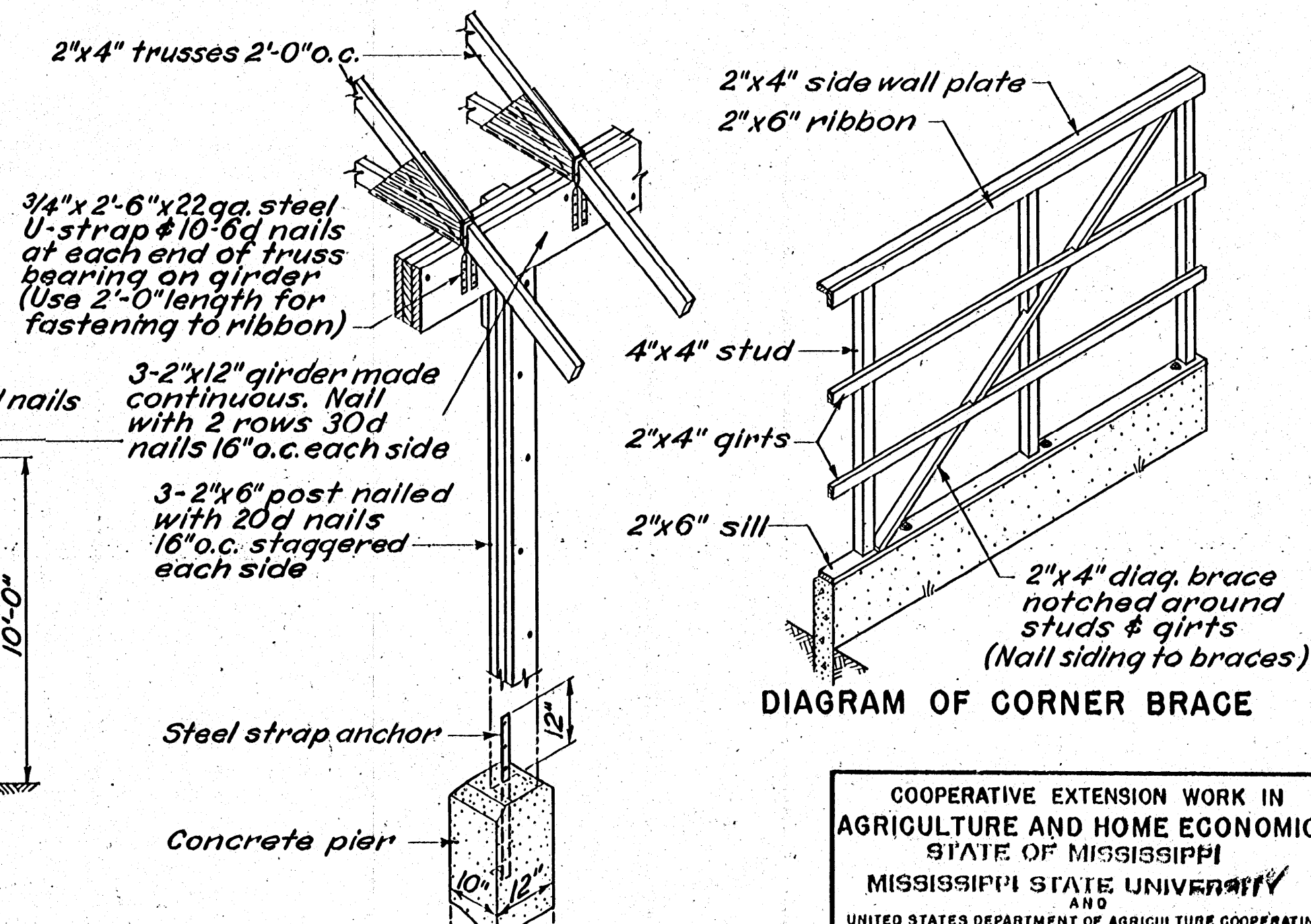
ELEVATION



FRAMING SECTION
Scale: 1/4" = 1'-0"

*NOTE: All truss gussets to be of "exterior type" plywood with direction of face grain as indicated.

Nailing shown is required for gussets on each face of truss.



DETAIL AT POST

DIAGRAM OF CORNER BRACE

COOPERATIVE EXTENSION WORK IN
AGRICULTURE AND HOME ECONOMICS
STATE OF MISSISSIPPI
MISSISSIPPI STATE UNIVERSITY
AND
UNITED STATES DEPARTMENT OF AGRICULTURE COOPERATING

CATTLE SHED

USDA '49 EX. 5676 SHEET 2 OF 2