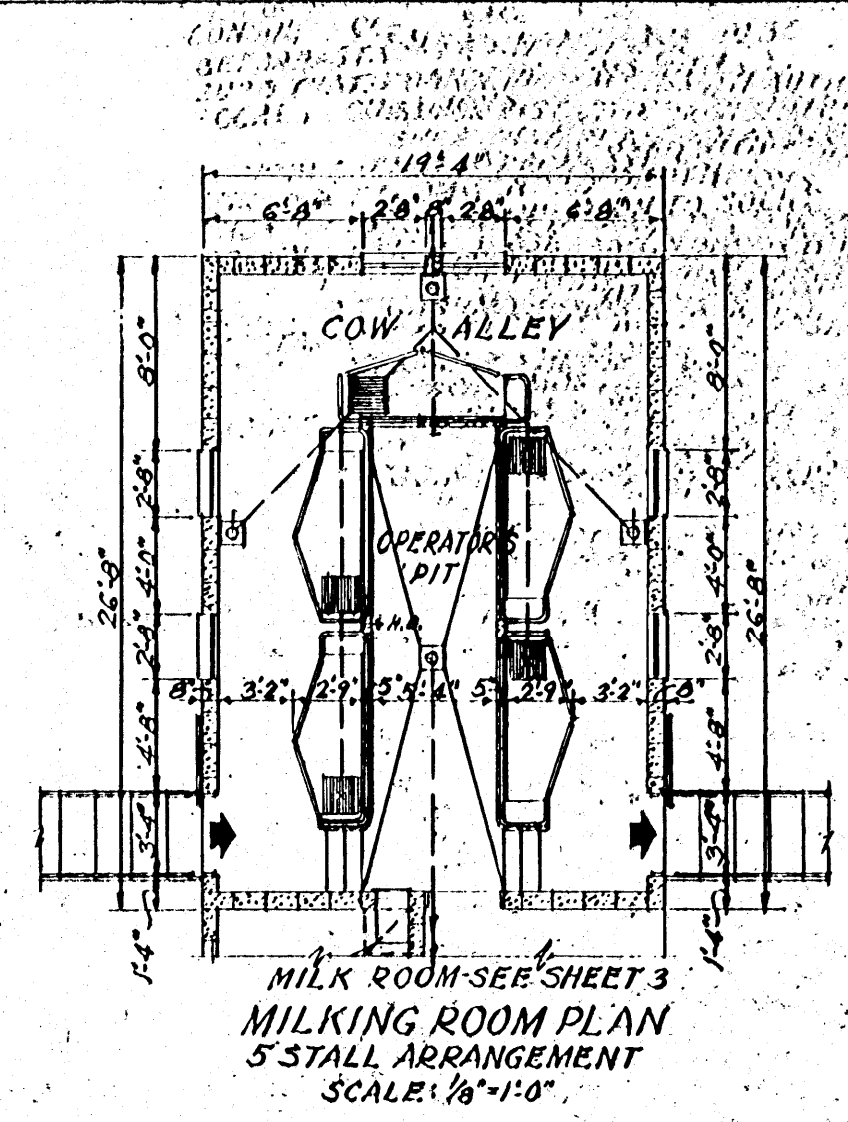
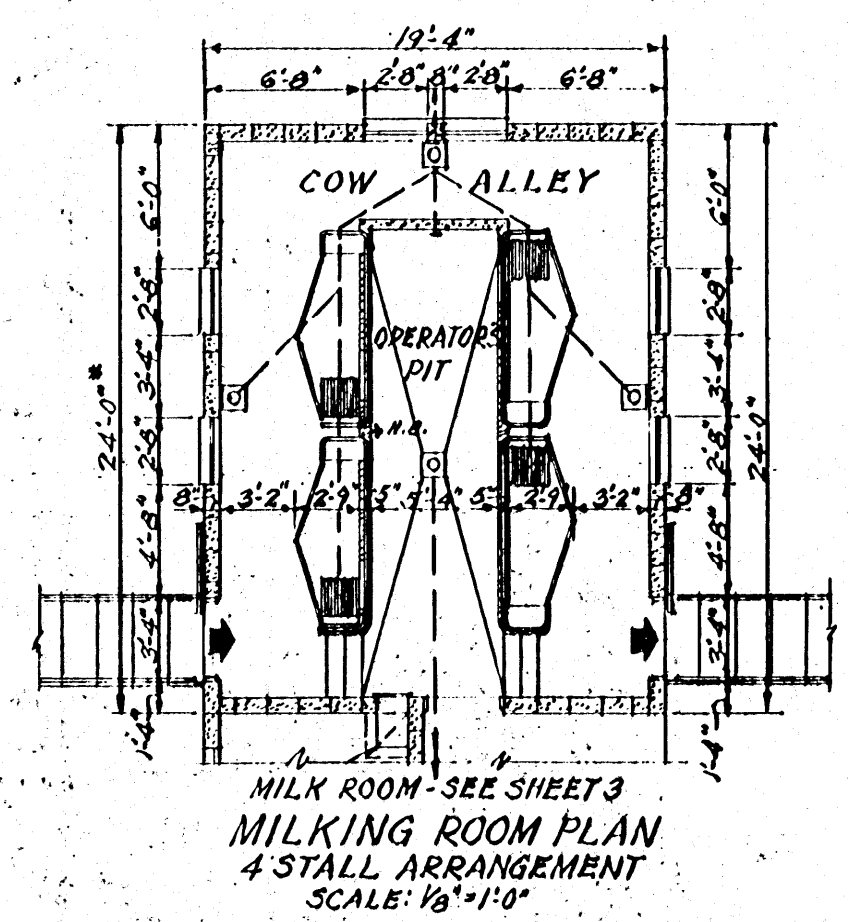


MILKING ROOM PLAN
3 STALL ARRANGEMENT
SCALE: 1/2" = 1'-0"

MILK ROOM ADDITION-SEE SHEET 3

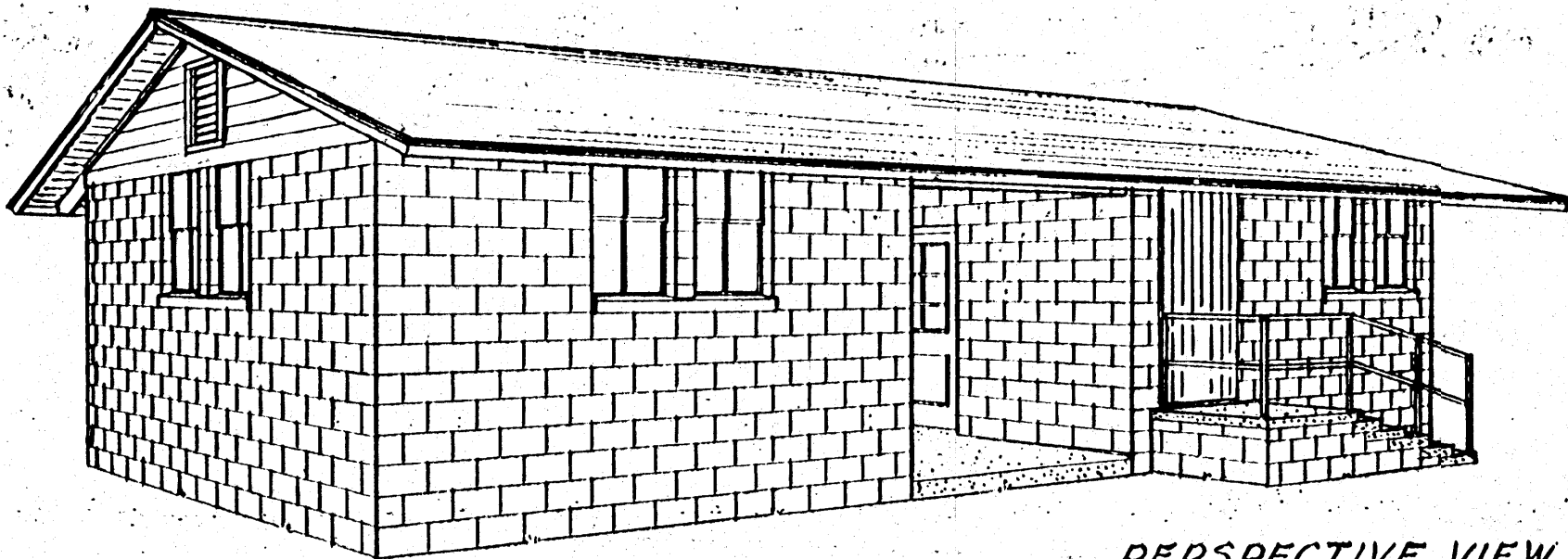


MILK ROOM-SEE SHEET 3
MILKING ROOM PLAN
5 STALL ARRANGEMENT
SCALE: 1/8" = 1'-0"



MILK ROOM-SEE SHEET 3
MILKING ROOM PLAN
4 STALL ARRANGEMENT
SCALE: 1/8" = 1'-0"

* INCREASE LENGTH 8'-2" FOR EACH ADDITIONAL PAIR OF STALLS. CHECK DIMENSIONS ON STALLS SELECTED.



PERSPECTIVE VIEW

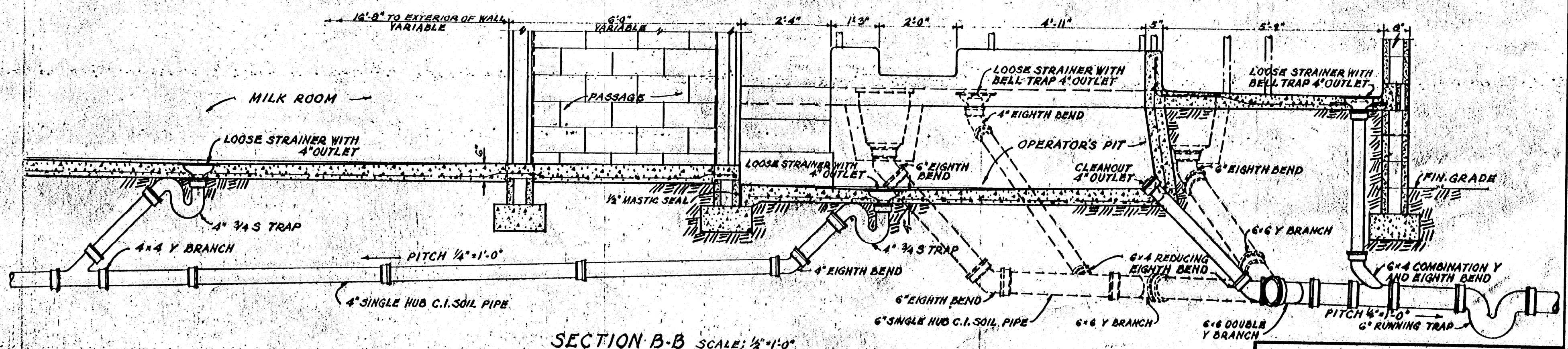
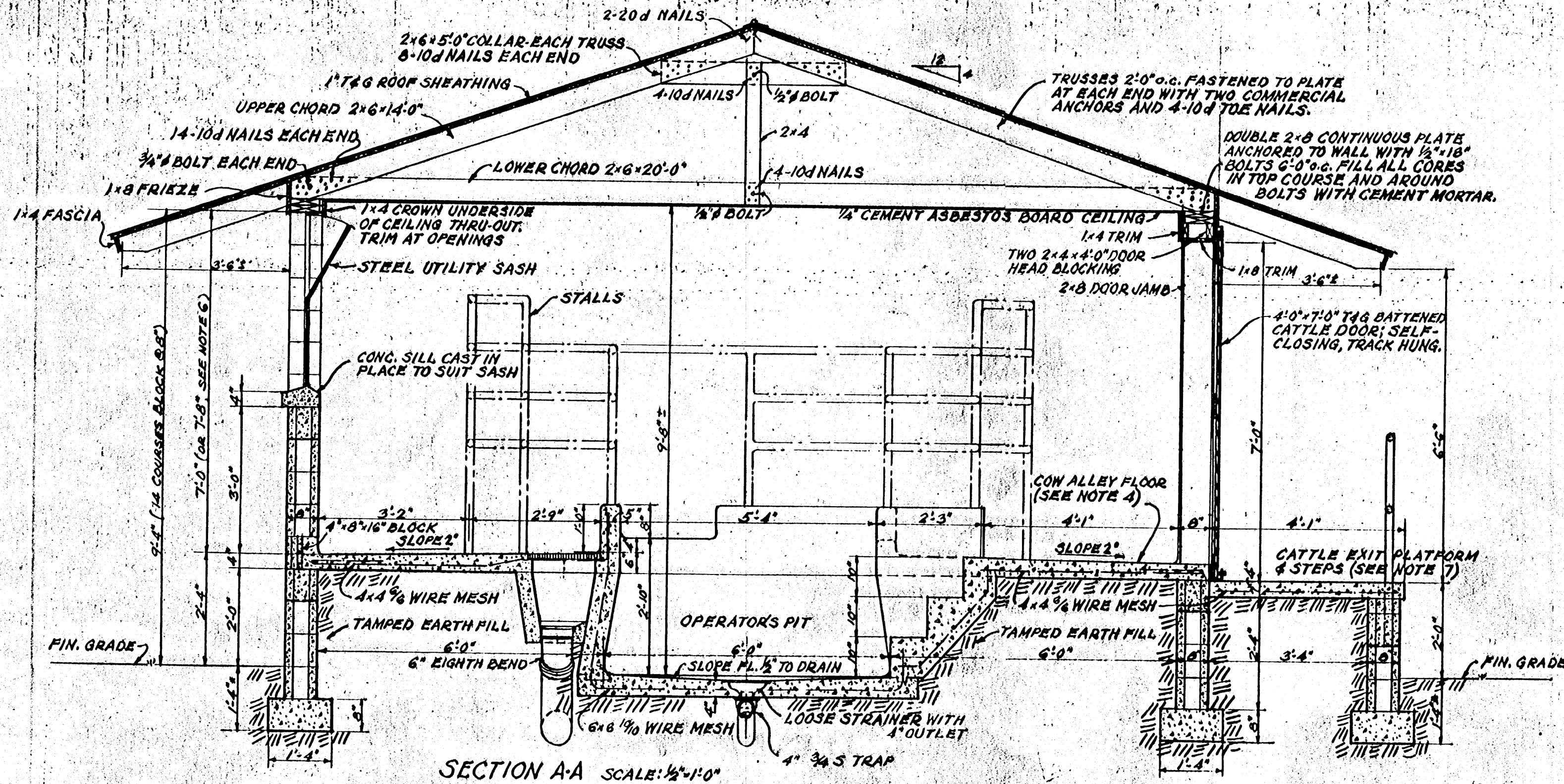
- ELECTRICAL SYMBOLS**
- S SWITCH L LAMP
 - 40 WATT FLUORESCENT STRIP FIXTURE
 - Ⓛ 250 WATT INFRARED LAMPS
 - ⊕ 3 KW - 230 VOLT HEATER
 - Ⓣ THERMOSTAT 2' BELOW CEILING
 - Ⓛ FAN OUTLET
 - Ⓛ DOUBLE CONVENIENCE OUTLET GROUNDED

COOPERATIVE EXTENSION WORK IN
AGRICULTURE AND HOME ECONOMICS
STATE OF MISSISSIPPI
MISSISSIPPI STATE UNIVERSITY
AND
UNITED STATES DEPARTMENT OF AGRICULTURE COOPERATING

MILKING PLANT
U. TYPE

USDA 59 EX. 5736 SHEET 1 OF 3

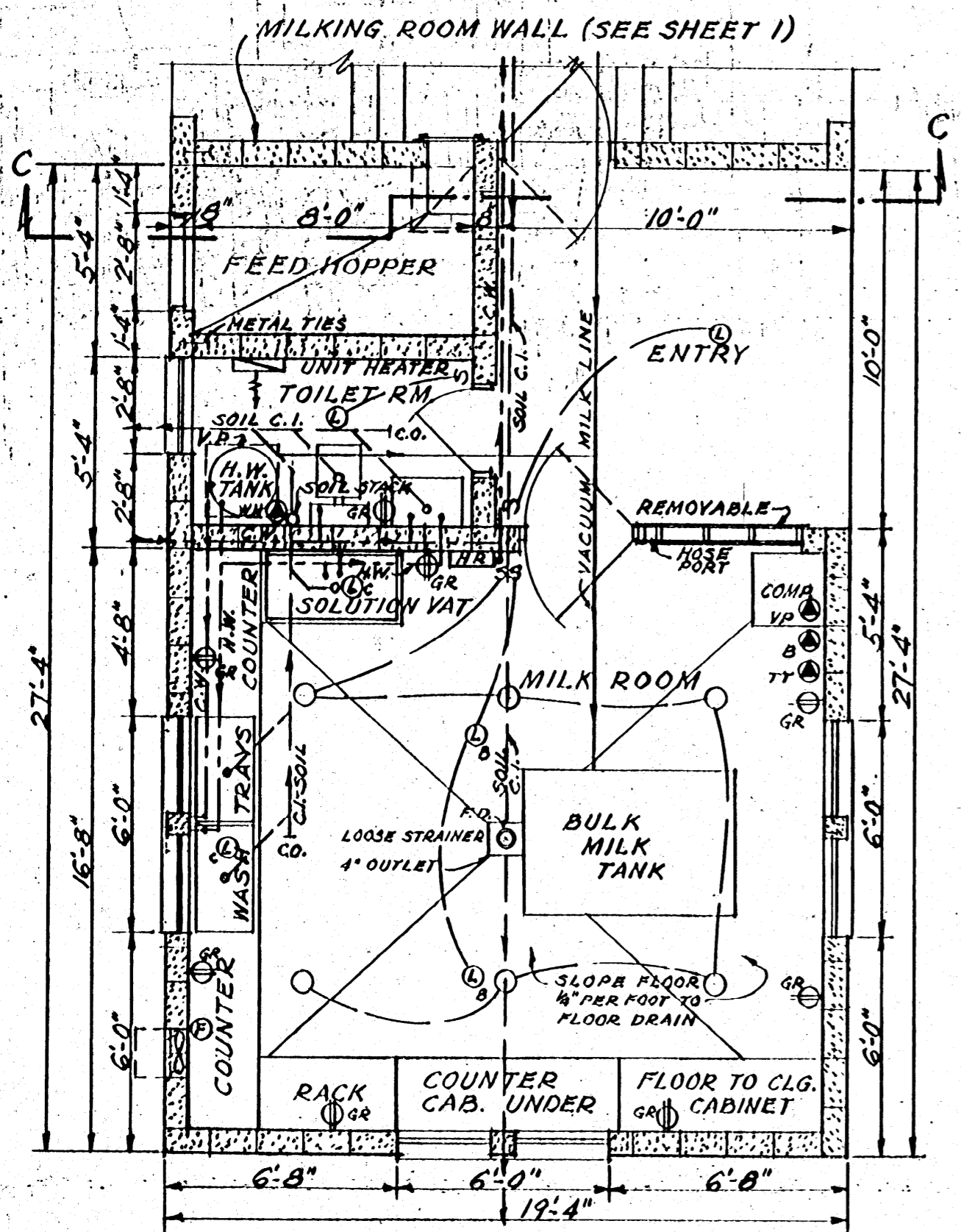
- GENERAL NOTES:**
1. CONSULT LOCAL HEALTH AUTHORITIES BEFORE STARTING CONSTRUCTION TO BE SURE THAT PLAN CONFORMS WITH LOCAL REGULATIONS.
 2. VARIABLE DIMENSIONS MARKED WITH * MINIMUM RECOMMENDED DEPTH SHOWN. CARRY FOUNDATION TO SOLID GROUND BELOW FROST.
 3. FILL TOP BLOCK COURSE WITH CEMENT MORTAR UNDER FLOOR SLABS BEARING ON MASONRY WALL. 1/2" GALVANIZED HARDWARE CLOTH MORTAR STOP IN JOINT BELOW FIRST COURSE.
 4. CONCRETE FLOORS USED BY CATTLE TO HAVE AN UNTROWELED SURFACE.
 5. INSTALL FLOOR DRAINS FLUSH WITH OR SLIGHTLY BELOW FLOOR SURFACE. PROVIDE WITH TRAP WHERE SHOWN AND CONNECT WITH DRAIN AS REQUIRED BY LOCAL SANITARY CODES.
 6. WHERE LOCAL REGULATIONS REQUIRE 8'-0" CEILING HEIGHT ABOVE COW ALLEY FLOOR, ADD ONE BLOCK COURSE MORE THAN SHOWN AND RAISE WINDOW SILLS TO SUIT.
 7. CATTLE EXIT PLATFORM AND STEPS: 4" CONCRETE SLAB REINFORCED WITH 1" x 4" WIRE MESH; SURFACE BROOMED AND LATERALLY SCORED AT 6" CENTERS. SIDE ENTRANCE, EXIT OR STRAIGHT-IN AND OUT STEPS OPTIONAL, LENGTH AND DIRECTION DEPENDENT UPON LOCAL CONDITIONS.
 8. PAINT EXTERIOR SURFACE OF BLOCK WALL WITH 2 COATS OF CEMENT PAINT ABOVE FINISH GRADE; FARGE WITH 1/2" CEMENT MORTAR BELOW FINISH GRADE.



COOPERATIVE EXTENSION WORK IN
 AGRICULTURE AND HOME ECONOMICS
 STATE OF MISSISSIPPI
 MISSISSIPPI STATE UNIVERSITY,
 AND
 UNITED STATES DEPARTMENT OF AGRICULTURE COOPERATING

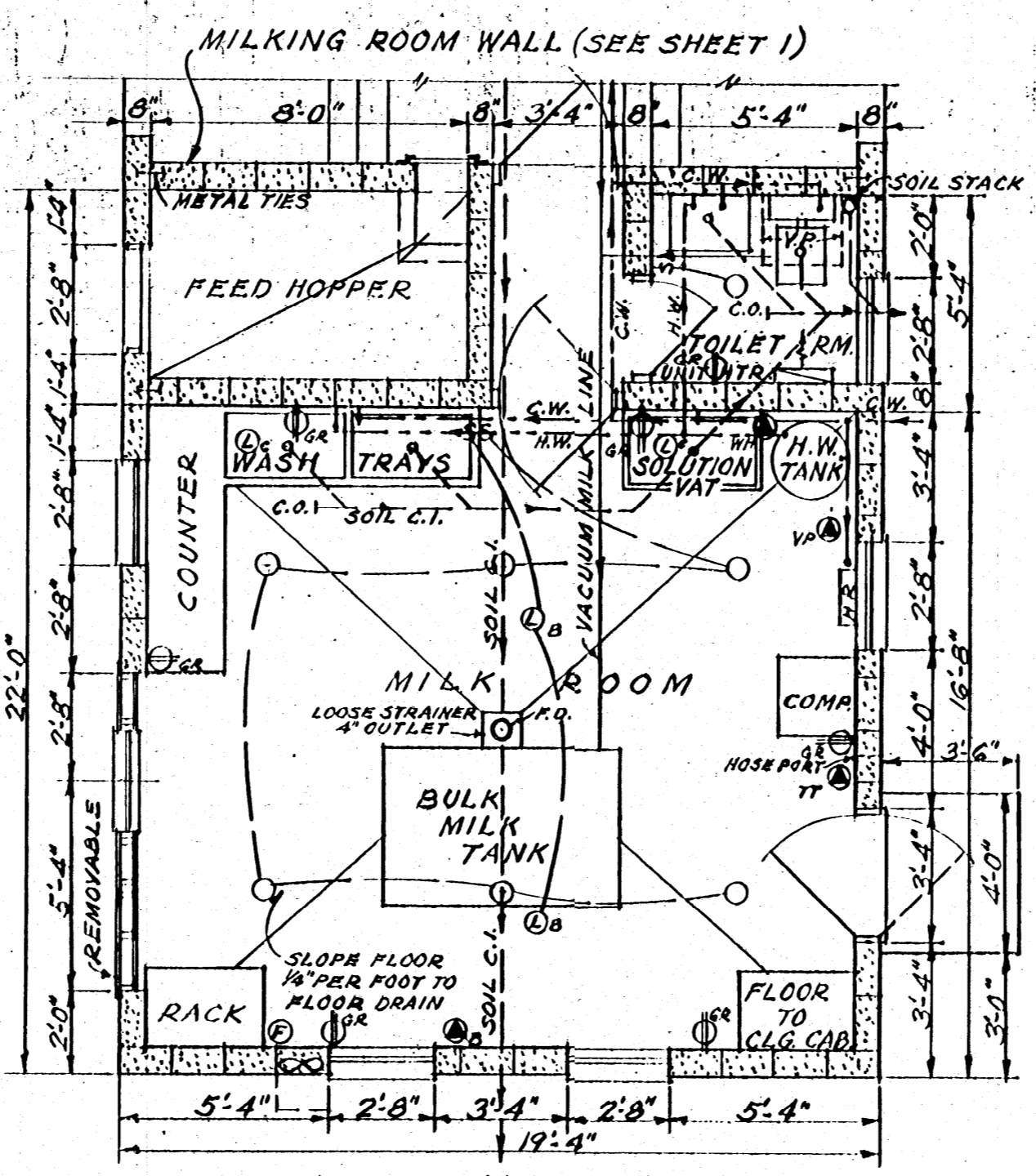
MILKING PLANT
 U TYPE

USDA 59 EX: 5736 SHEET 2 OF 3



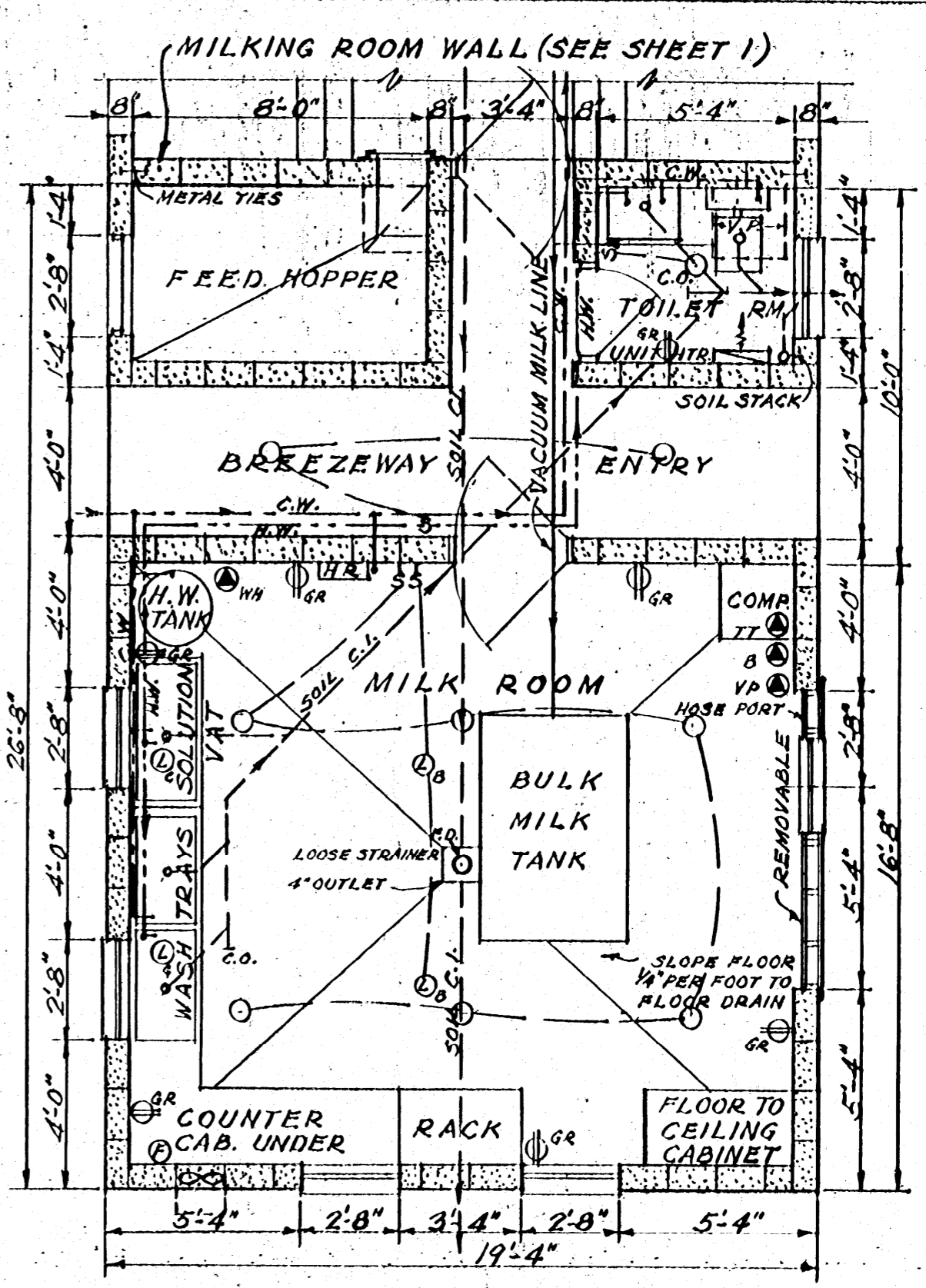
MILK ROOM PLAN NO. 1
SCALE: 1/4" = 1'-0"

NOTE: C.W. - COLD WATER
H.W. - HOT WATER
H.R. - HOSE RACK
F.D. - FLOOR DRAIN
C.O. - CLEAN OUT



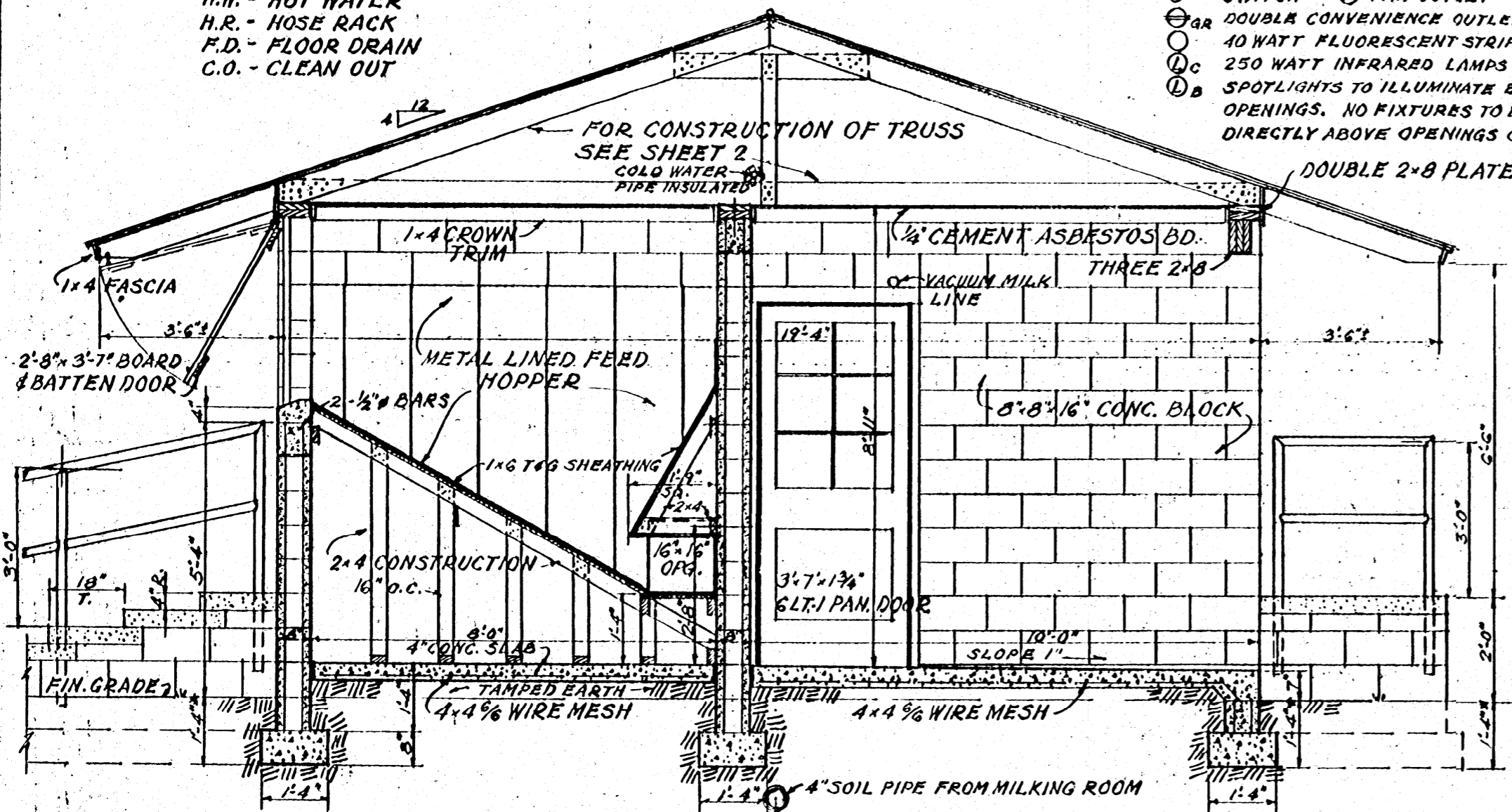
MILK ROOM PLAN NO. 2
SCALE: 1/4" = 1'-0"

NOTE: HOSE PORTS 16" ABOVE FLOOR TO FIT LOCAL LAYOUT.

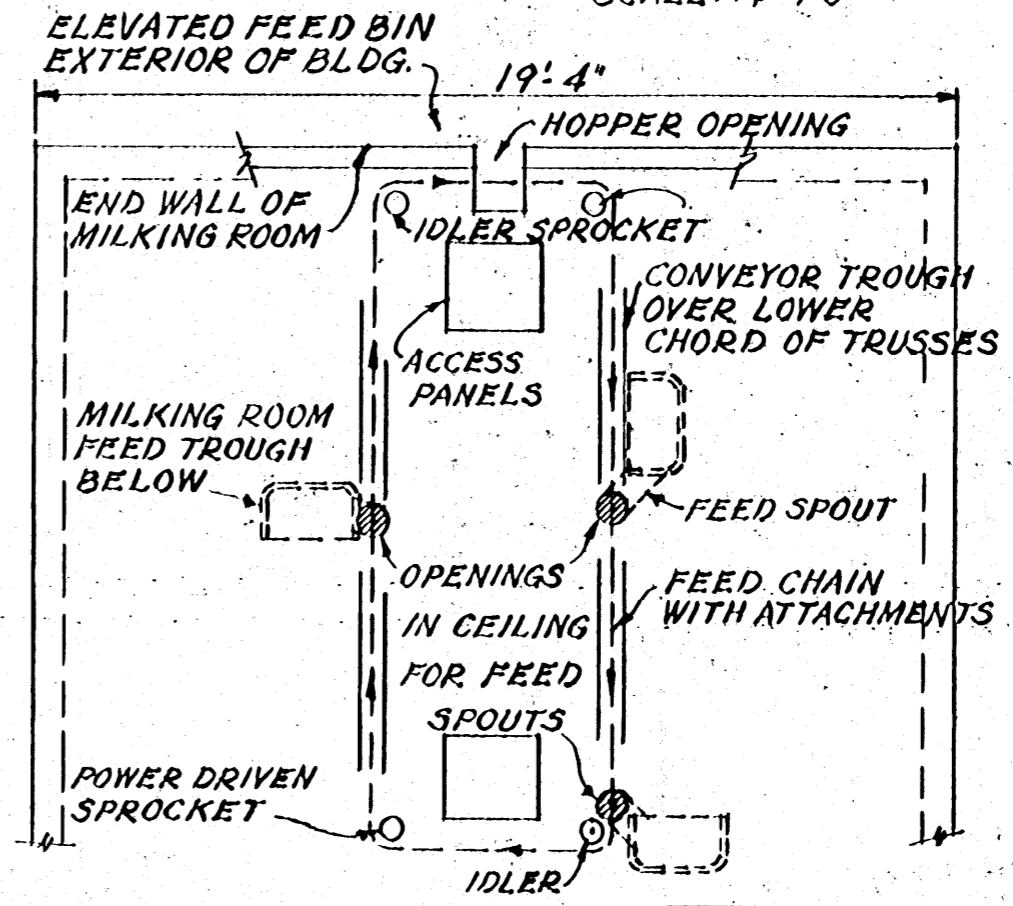


MILK ROOM PLAN NO. 3
SCALE: 1/4" = 1'-0"

- ELECTRICAL SYMBOLS
- VP MILKER VACUUM PUMP - 230 VOLT, 3 P, SN FUSED SWITCH
 - BT BULK MILK TANK - 230 VOLT, 3 P, SN FUSED SWITCH
 - TT TANK TRUCK - 230 VOLT
 - WH WATER HEATER - 230 VOLT, 3 P, SN FUSED SWITCH
 - S SWITCH (F) FAN OUTLET (L) LAMP
 - GR DOUBLE CONVENIENCE OUTLET GROUNDED, 40 WATT FLUORESCENT STRIP FIXTURE, 250 WATT INFRARED LAMPS OVER WASH AREAS.
 - OC SPOTLIGHTS TO ILLUMINATE BULK MILK TANK OPENINGS. NO FIXTURES TO BE MOUNTED DIRECTLY ABOVE OPENINGS OF BULK TANK.



SECTION C-C
SCALE: 3/8" = 1'-0"



ALTERNATE FEED SYSTEM
MECHANICAL FEEDER OVER CEILING OF 3 STALL MILKING ROOM
SCALE: 1/4" = 1'-0"

COOPERATIVE EXTENSION WORK IN
AGRICULTURE AND HOME ECONOMICS
STATE OF MISSISSIPPI
MISSISSIPPI STATE UNIVERSITY
AND
UNITED STATES DEPARTMENT OF AGRICULTURE COOPERATING

MILKING PLANT
U TYPE

USDA 59 EX. 5736 SHEET 3 OF 3