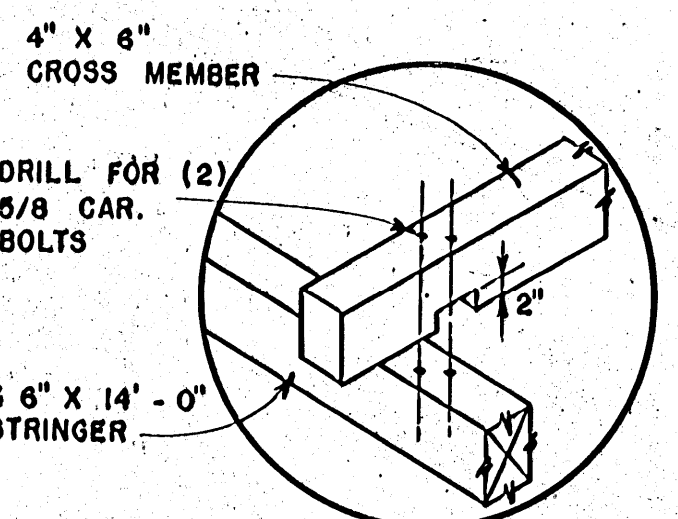


ROOF OPTIONAL. IF OMITTED, ADD (1) 2" X 4" X 8' - 6" CROSS TIE AT TOP OF (2) CENTER POSTS



DETAIL AT "A"

NAIL FLOORING TO 2" X 4" BRACES

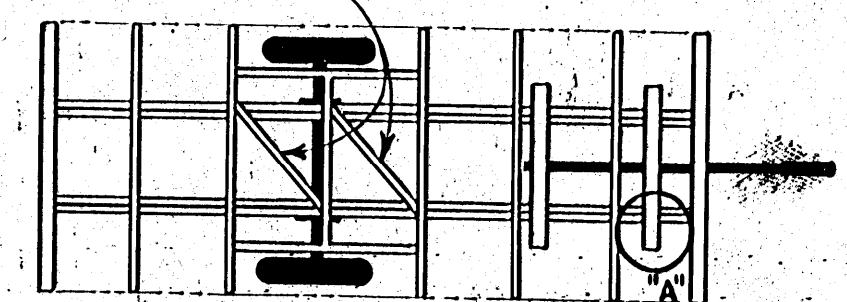
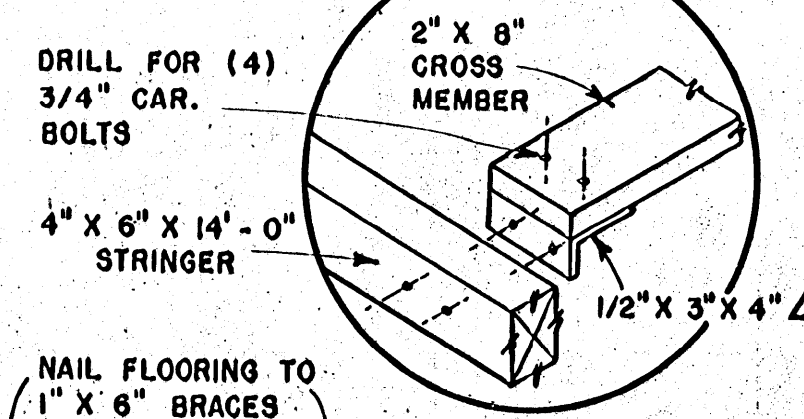
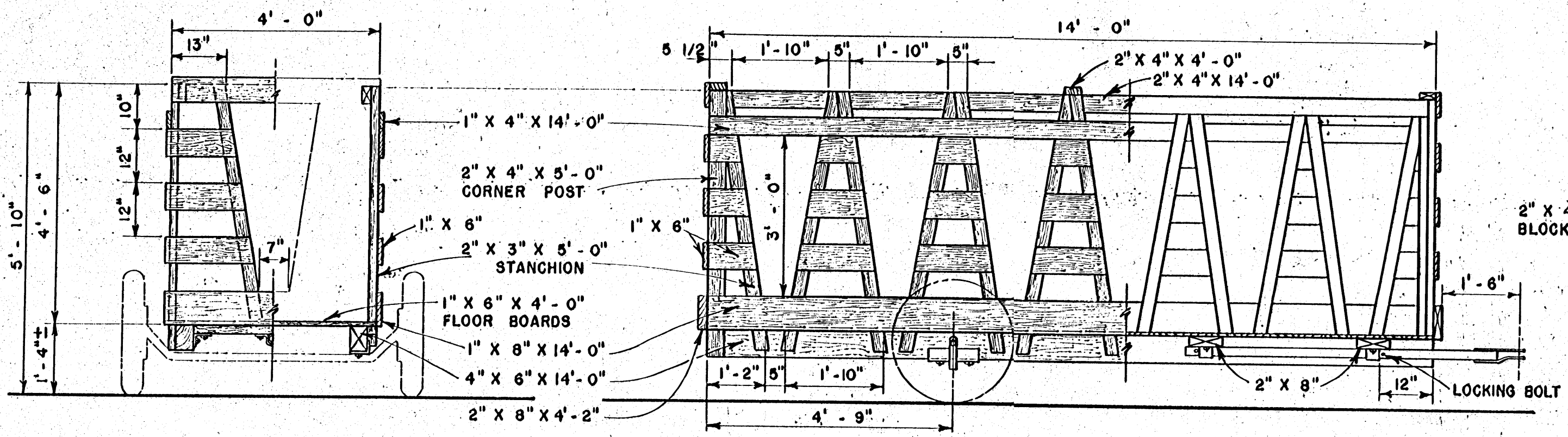


DIAGRAM SHOWING FRAMING BELOW FLOOR

END VIEW CUT AWAY TO SHOW FRAMING

SIDE VIEW CUT AWAY TO SHOW FRAMING AND TOW BAR



DETAIL AT "B"

NAIL FLOORING TO 1" X 6" BRACES

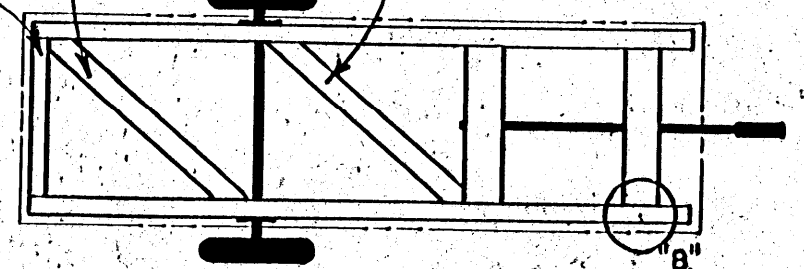
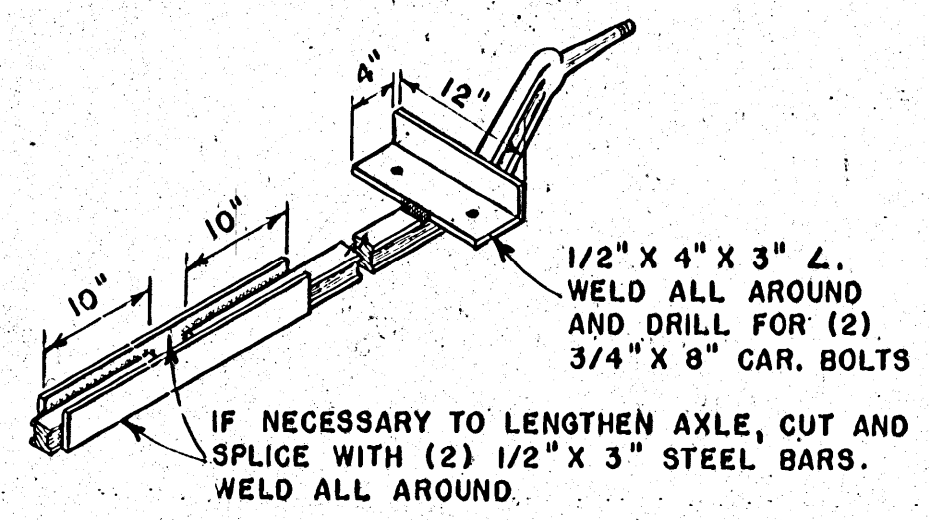


DIAGRAM SHOWING FRAMING BELOW FLOOR

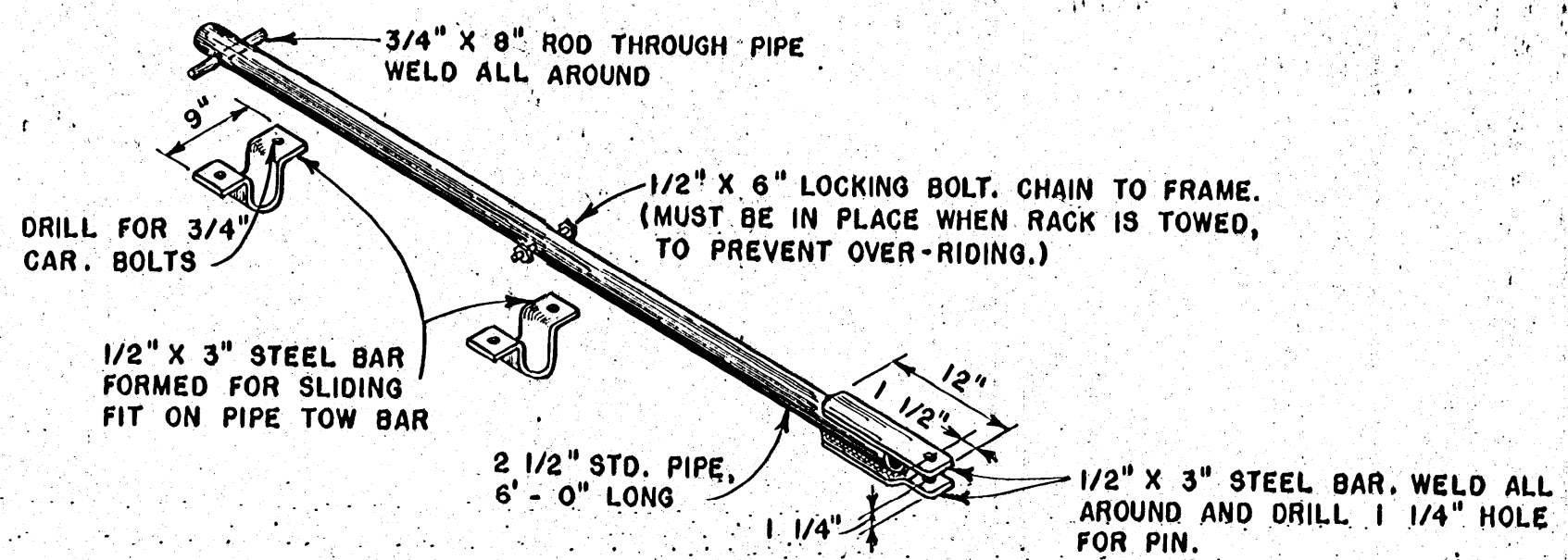
END VIEW CUT AWAY TO SHOW FRAMING

SIDE VIEW CUT AWAY TO SHOW FRAMING AND TOW BAR (THIS RACK IS NOT FOR CATTLE WITH HORNS)



AXLE ASSEMBLY

ADAPTED FROM AUTOMOBILE FRONT AXLE AND WHEEL ASSEMBLY OR OTHER DROP AXLE.



TOW BAR ASSEMBLY

TO SLIDE BACK UNDER FLOOR OF RACK WHEN NOT IN USE.

COOPERATIVE EXTENSION WORK IN AGRICULTURE AND HOME ECONOMICS STATE OF MISSISSIPPI MISSISSIPPI STATE UNIVERSITY AND UNITED STATES DEPARTMENT OF AGRICULTURE COOPERATING

MOVABLE HAY RACKS FOR CATTLE

USDA '54 EX. 5777 SHEET 1 OF 1