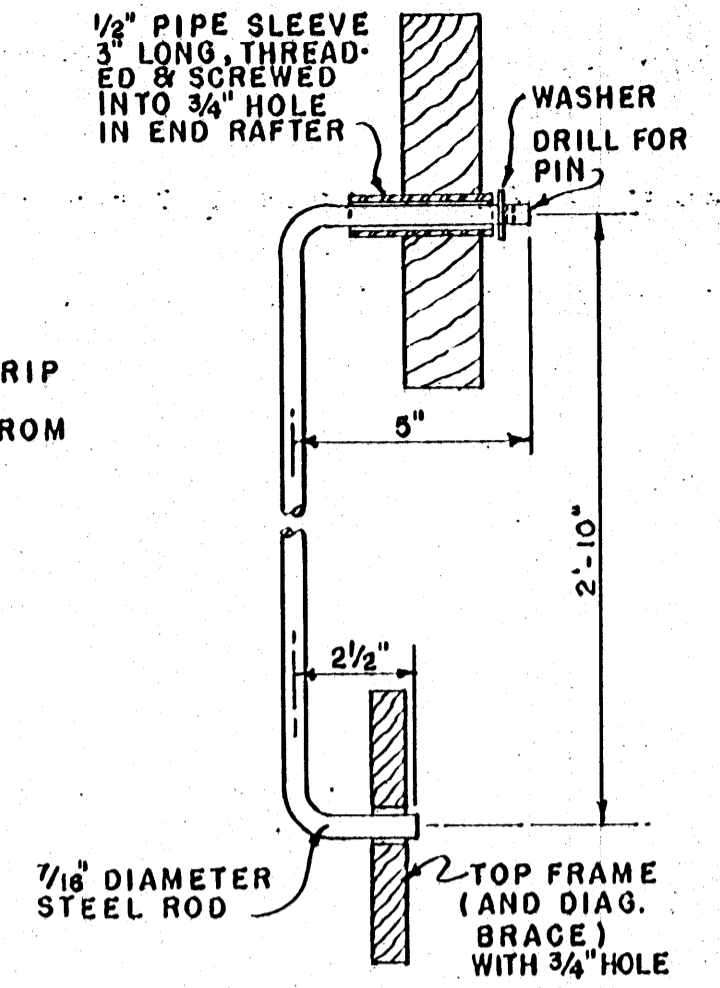
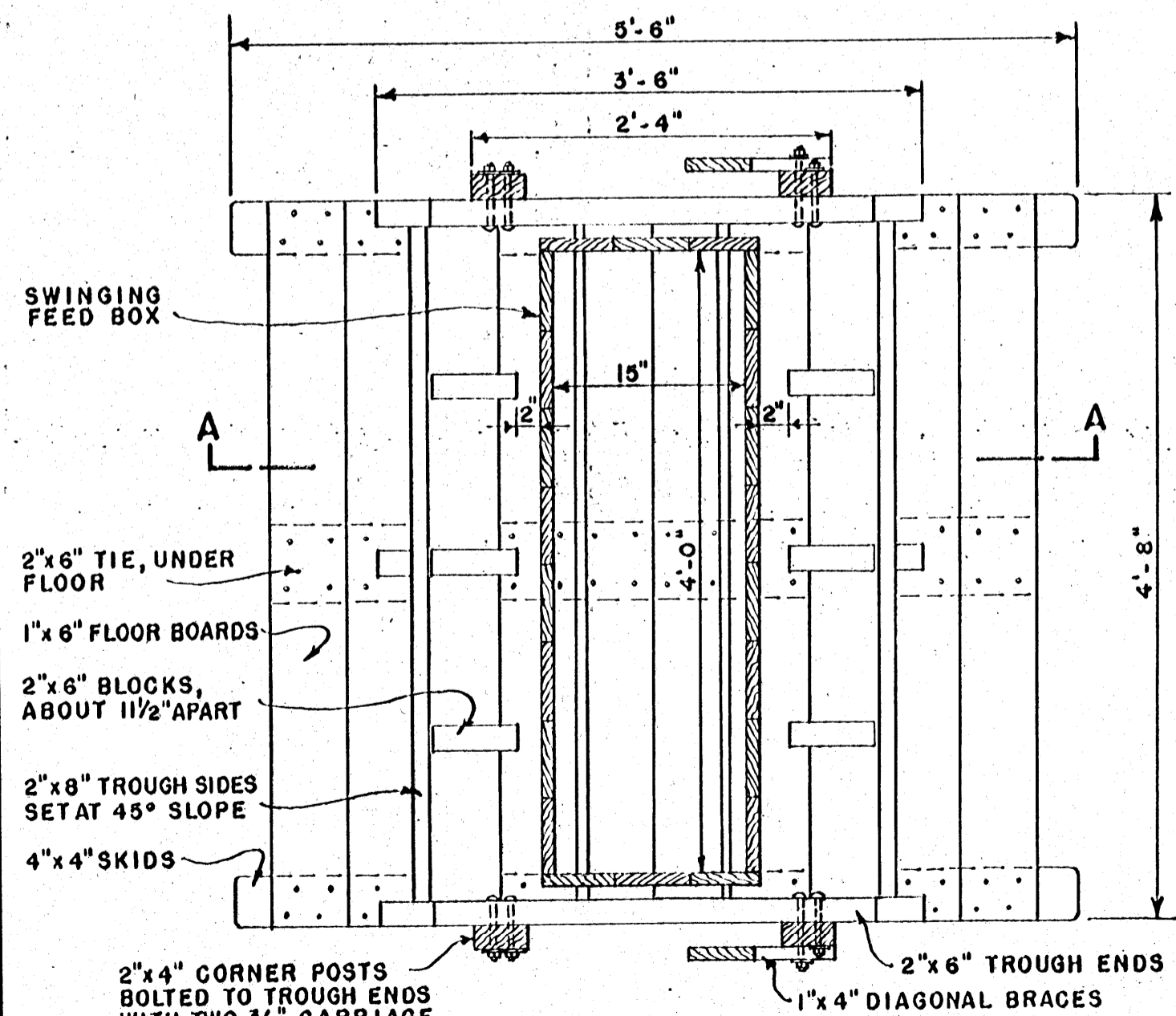


CROSS SECTION AT A-A

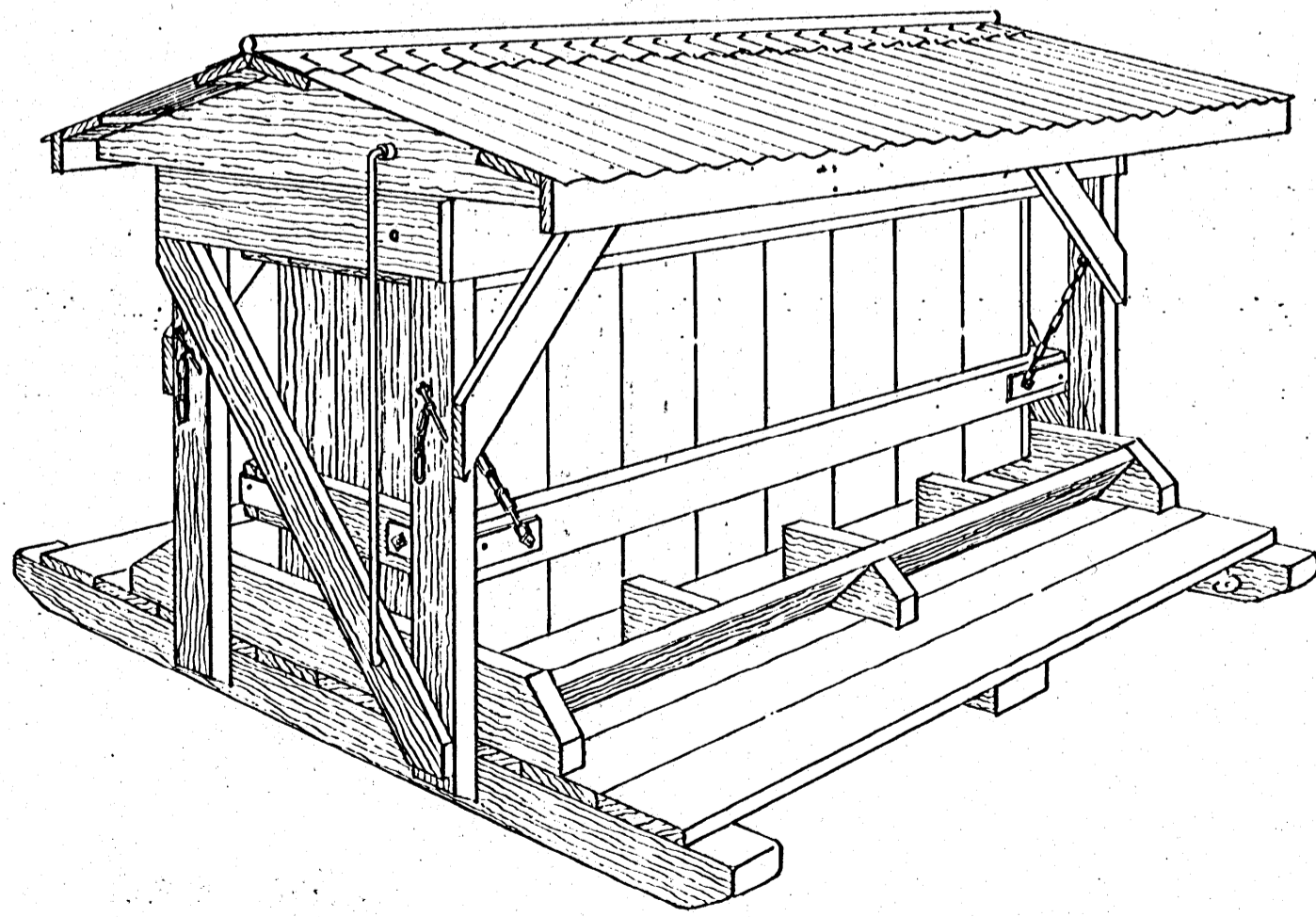
SIDE ELEVATION  
CUT AWAY TO SHOW CONSTRUCTION



LOCKING ROD  
TO HOLD ROOF OPEN OR CLOSED  
(ONE REQUIRED)  
SCALE 3" = 1'-0"



PLAN AT B-B  
SCALE: 1" = 1'-0"



PERSPECTIVE VIEW OF COMPLETED FEEDER  
NO SCALE

MATERIAL LIST		
THIS LIST OF MATERIALS IS PREPARED FOR ESTIMATING PURPOSES, IF USED FOR THE PURCHASE OF MATERIALS, THE QUANTITIES SHOULD BE VERIFIED BY THE BUILDER.		
ITEM	SIZE	PIECES
SKIDS (PRESSURE-TREATED)	4" x 4" x 12'-0"	1
TROUGH ENDS, BLOCKS & TIES	2" x 6" x 12'-0"	2
TROUGH SIDES	2" x 8" x 14'-0"	1
CORNER POSTS	2" x 4" x 14'-0"	1
TOP FRAME	1" x 6" x 16'-0"	1
BRACES	1" x 4" x 16'-0"	1
FEED BOX FRAME	2" x 4" x 12'-0"	2
WALLS	1" x 6" x 10'-0"	6
FLOOR	1" x 6" x 10'-0"	5
ROOF RAFTERS	2" x 10" x 12'-0"	1
NAILING STRIPS	1" x 6" x 12'-0"	2
CORRUGATED ROOFING	1 SHEET - 2 1/2" CORRUGATED METAL 12' LONG.	
RIDGE ROLL	6 FEET LONG	
HARDWARE	1 PIPE SLEEVE 1/2" x 3", WASHER, 1 STEEL ROD 7/16" x 4'-0", 8 STEEL STRAPS 1/8" x 2 1/2" x 12", 1 1/2 PR. 6" HEAVY STRAP HINGES, 24 - 3/8" CARRIAGE BOLTS, 4 - 1/2" BOLTS, 8 FT. GALVANIZED WELL CHAIN, 2 TOWING HOOKS, 4 - 3/8" x 3" LAG SCREWS, NAILS, SCREWS, AND PRESERVATIVE.	

NOTE:  
FOR LONGEST SERVICE, ALL WOOD PARTS SHOULD BE TREATED WITH PRESERVATIVE AFTER CUTTING, SKIDS SHOULD BE PRESSURE-TREATED OR OF DECAY RESISTANT WOOD SUCH AS LOCUST, REDWOOD, CYPRESS OR RED CEDAR.  
CAPACITY ABOUT 10 BUSHELS.

COOPERATIVE EXTENSION WORK IN  
AGRICULTURE AND HOME ECONOMICS  
STATE OF MISSISSIPPI  
MISSISSIPPI STATE UNIVERSITY  
AND  
UNITED STATES DEPARTMENT OF AGRICULTURE COOPERATING

**SELF-FEEDER**  
FOR HOGS

S.C. '55 EX. 5814 SHEET 1 OF 1