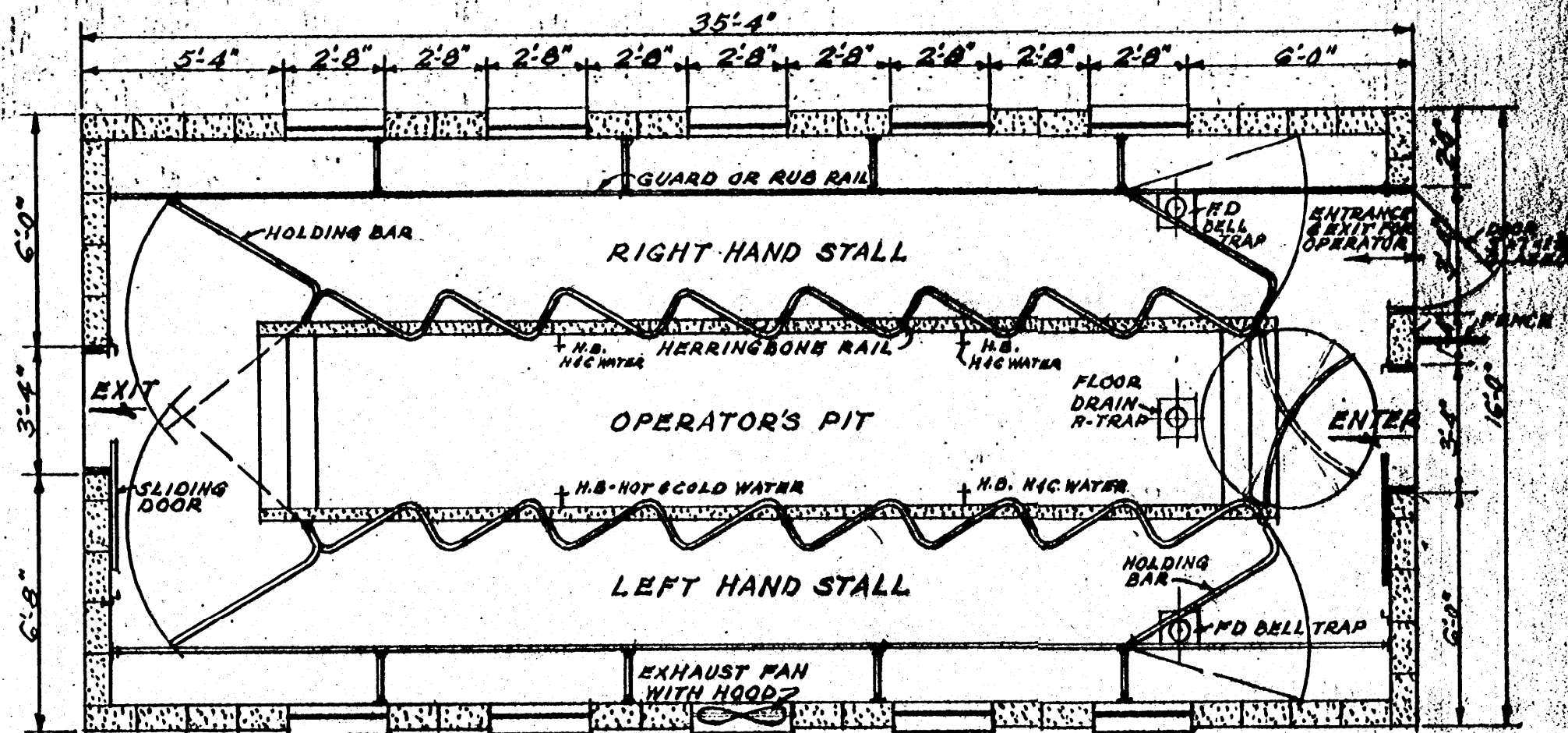
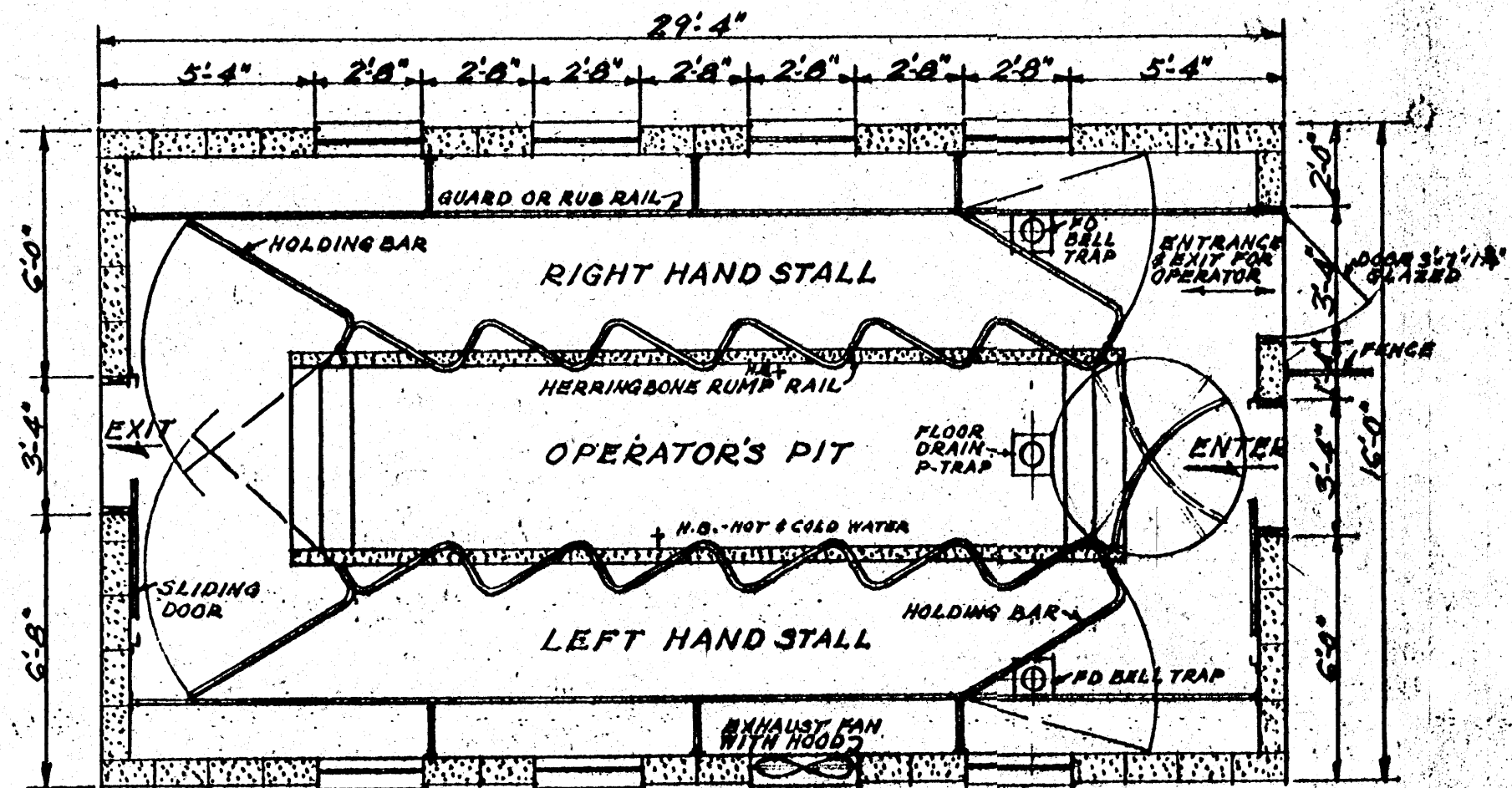


PLAN
DOUBLE FOUR STALL
SCALE: 1/2" = 1'-0"



PLAN
DOUBLE EIGHT STALL
SCALE: 1/4" = 1'-0"



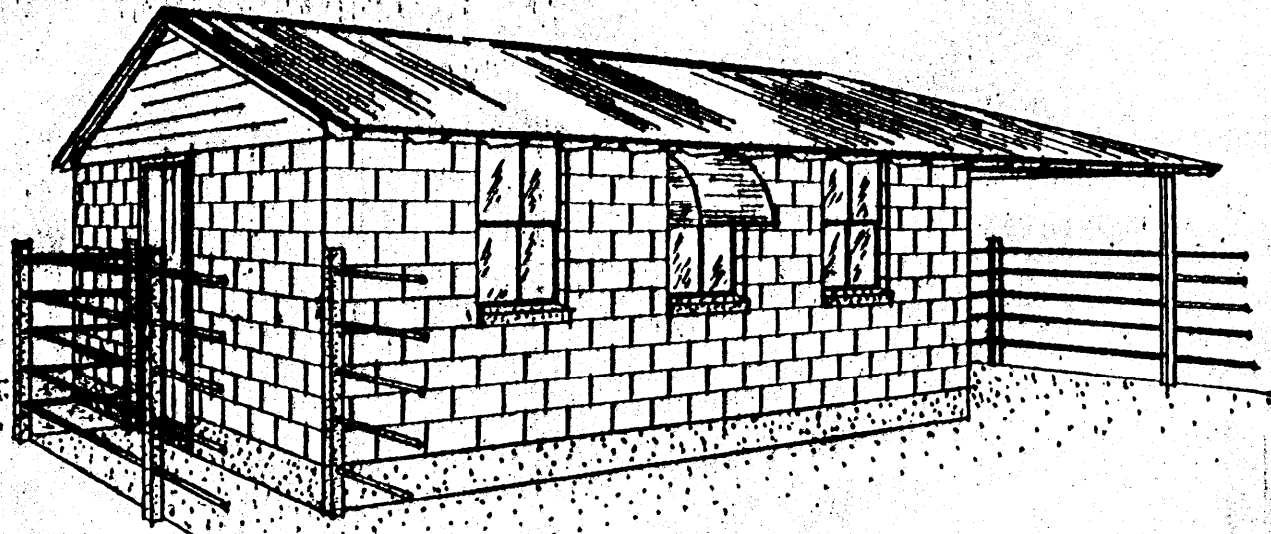
PLAN
DOUBLE SIX STALL
SCALE: 1/4" = 1'-0"

- ELECTRICAL SYMBOLS**
- S SWITCH Ⓛ LAMP S₃ SWITCH-3-WAY
 - Ⓛ_A 40 WATT FLUORESCENT STRIP FIXTURE
 - Ⓛ_C 250 WATT INFRARED LAMPS
 - Ⓜ_H 3 KW-230 VOLT HEATER
 - Ⓜ_A THERMOSTAT 2' BELOW CEILING
 - Ⓜ FAN OUTLET
 - Ⓜ_{GR} DOUBLE CONVENIENCE OUTLET GROUNDED

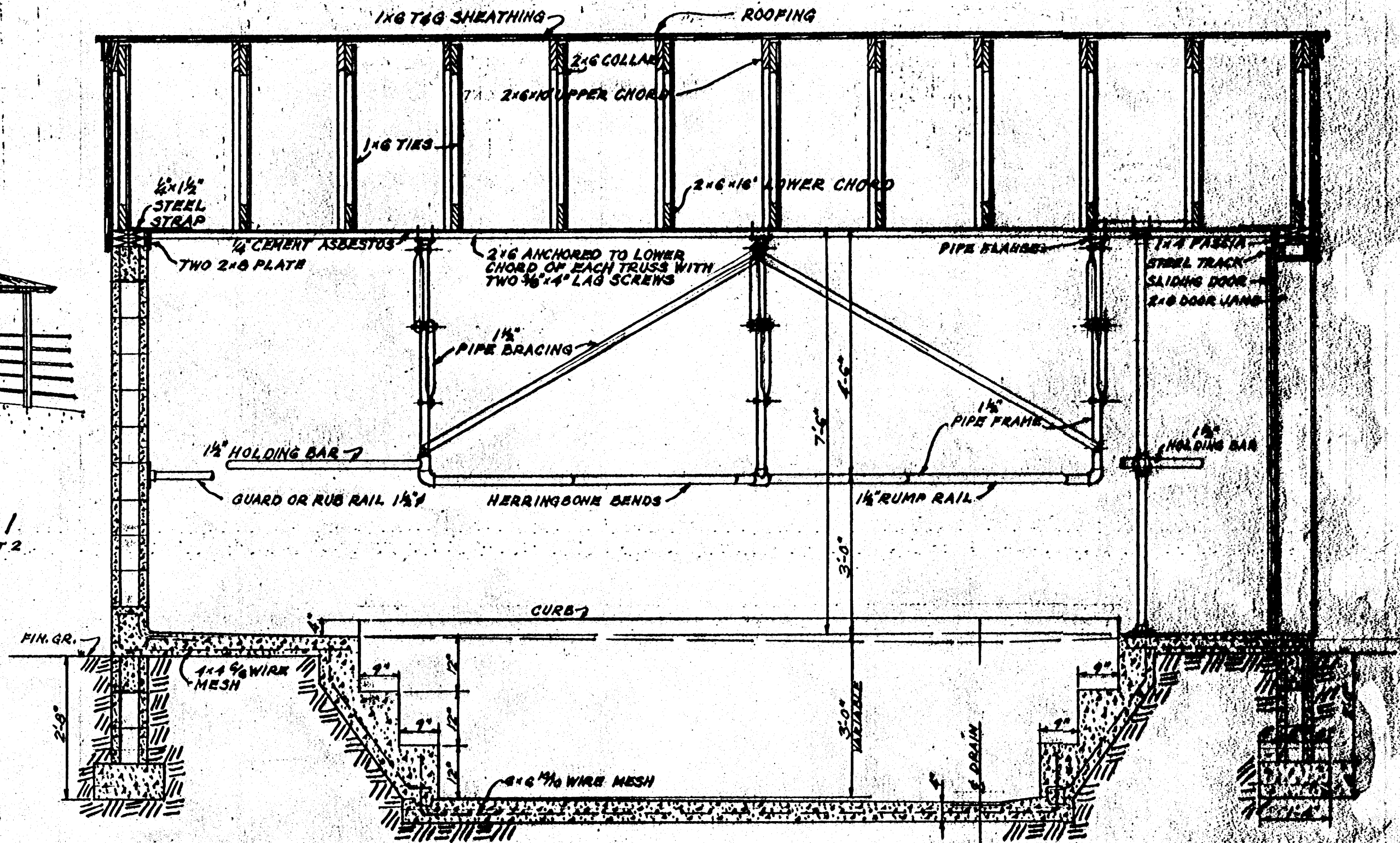
COOPERATIVE EXTENSION WORK IN
AGRICULTURE AND HOME ECONOMICS
STATE OF MISSISSIPPI
MISSISSIPPI STATE UNIVERSITY
AND
UNITED STATES DEPARTMENT OF AGRICULTURE COOPERATION

MILKING PLANT
HERRINGBONE TYPE 4 STALL

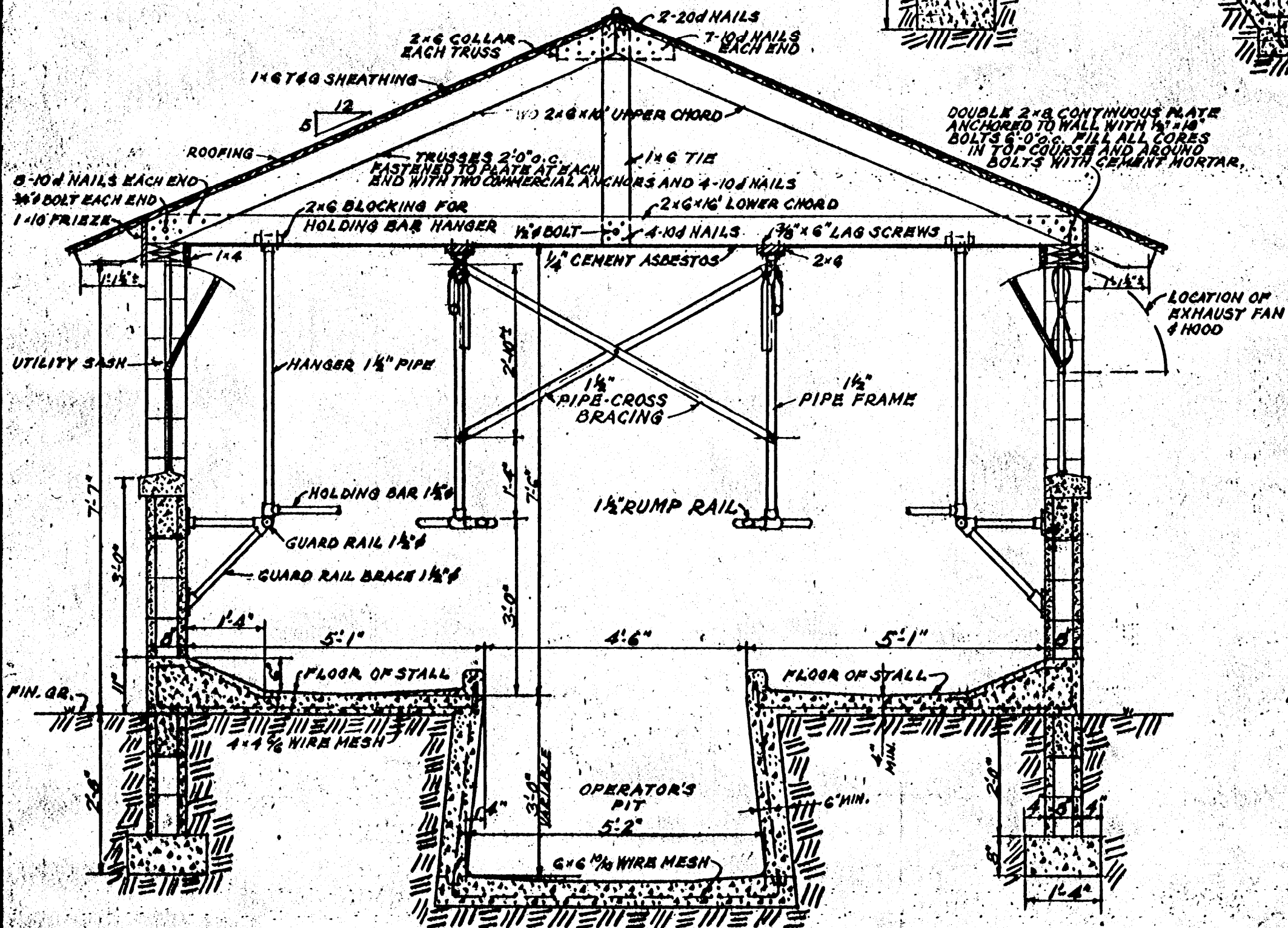
USDA'S EX. 5868 SHEET 1 OF 3



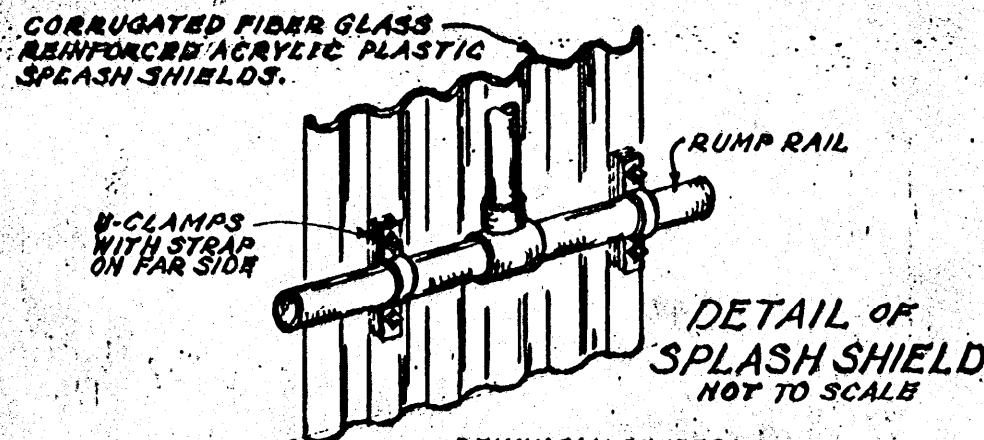
PERSPECTIVE OF ARRANGEMENT NO. 1
VIEW FROM HOLDING AREA SHOWING MILKING ROOM-SEE SHEET 2.



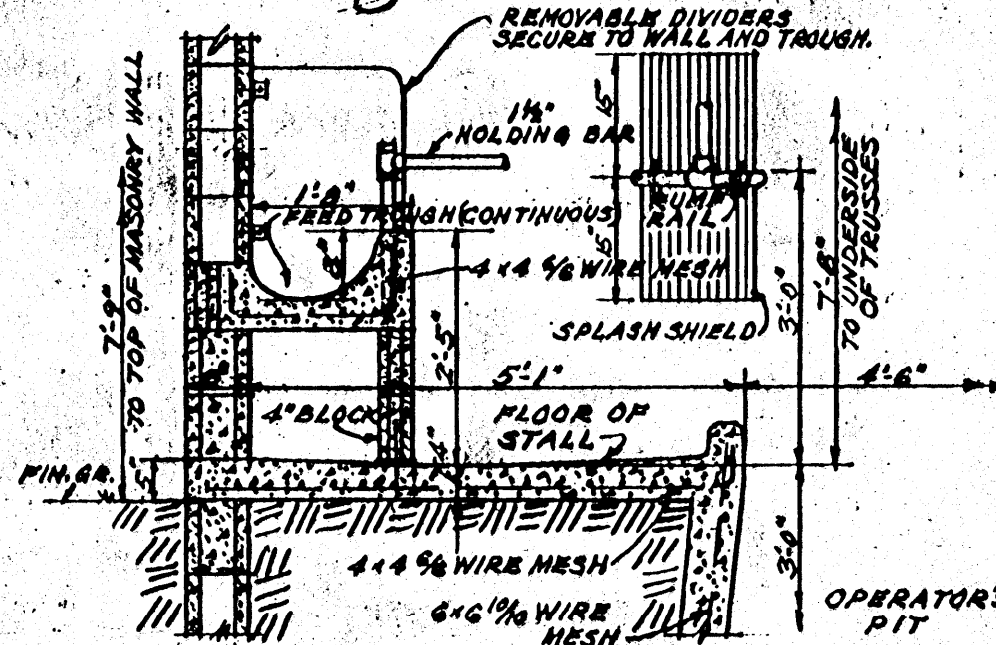
SECTION A-A
SCALE: 1/2"=1'-0"



SECTION B-B
SCALE: 1/2"=1'-0"



DETAIL OF SPLASH SHIELD
NOT TO SCALE

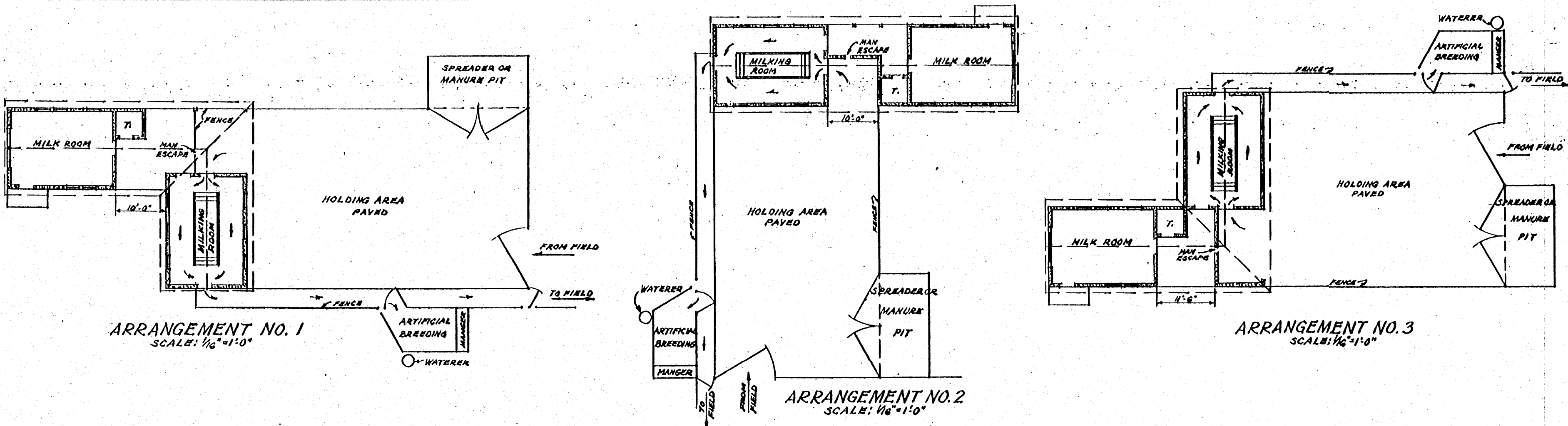


PART SECTION
ALTERNATE SHOWING FEED TROUGH
SCALE: 1/2"=1'-0"

NOTE: PROVIDE SPOUTS TO FILL TROUGH.

GENERAL NOTES:

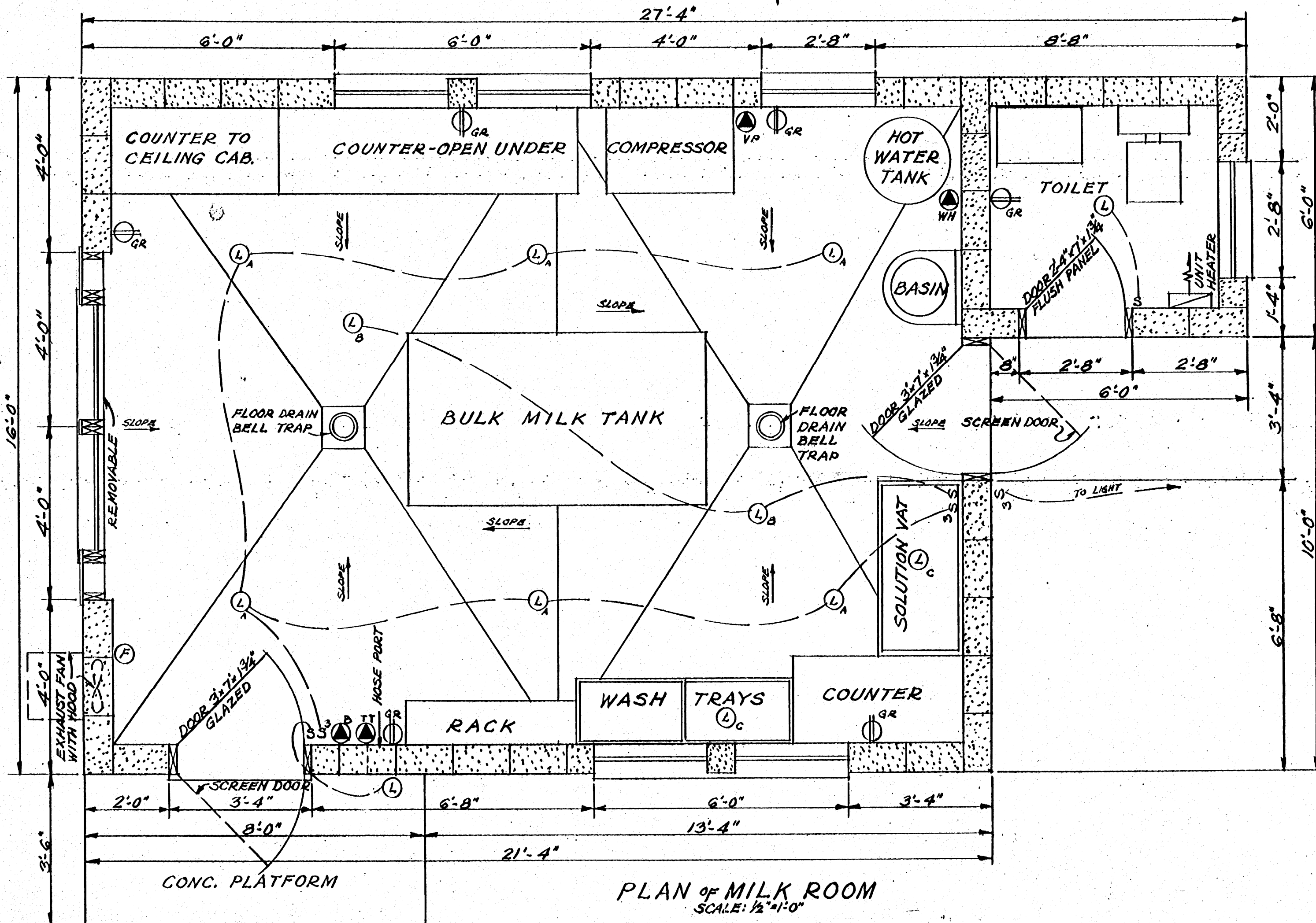
1. CONSULT LOCAL HEALTH AUTHORITIES BEFORE STARTING CONSTRUCTION TO BE SURE THAT PLAN CONFORMS WITH LOCAL REGULATIONS.
2. FOUNDATION WALL FOOTINGS SHOULD BE DEEP ENOUGH TO BEAR ON SOLID GROUND, BELOW FROST LINE.
3. FILL TOP BLOCK COURSE WITH CEMENT MORTAR UNDER FLOOR SLAB BEARING ON MASONRY WALL.
4. CONCRETE FLOORS TO HAVE AN UNTROWELED SURFACE.



ARRANGEMENT NO. 1
SCALE: 1/16" = 1'-0"

ARRANGEMENT NO. 2
SCALE: 1/16" = 1'-0"

ARRANGEMENT NO. 3
SCALE: 1/16" = 1'-0"



PLAN of MILK ROOM
SCALE: 1/2" = 1'-0"

- ELECTRICAL SYMBOLS ***
- VP MILKER VACUUM PUMP-230 VOLT, 3P, SN FUSED SWITCH
 - B BULK MILK TANK-230 VOLT, 3P, SN FUSED SW.
 - TT TANK TRUCK 230 VOLT
 - WH WATER HEATER 230 VOLT, 3P, SN FUSED SW.
- * FOR ADDITIONAL SYMBOLS SEE SHEET 1

COOPERATIVE EXTENSION WORK IN
AGRICULTURE AND HOME ECONOMICS
STATE OF MISSISSIPPI
MISSISSIPPI STATE UNIVERSITY,
AND
UNITED STATES DEPARTMENT OF AGRICULTURE COOPERATING

MILKING PLANT
HERRINGBONE TYPE

USDA '59 EX. 5868 SHEET 2 OF 3