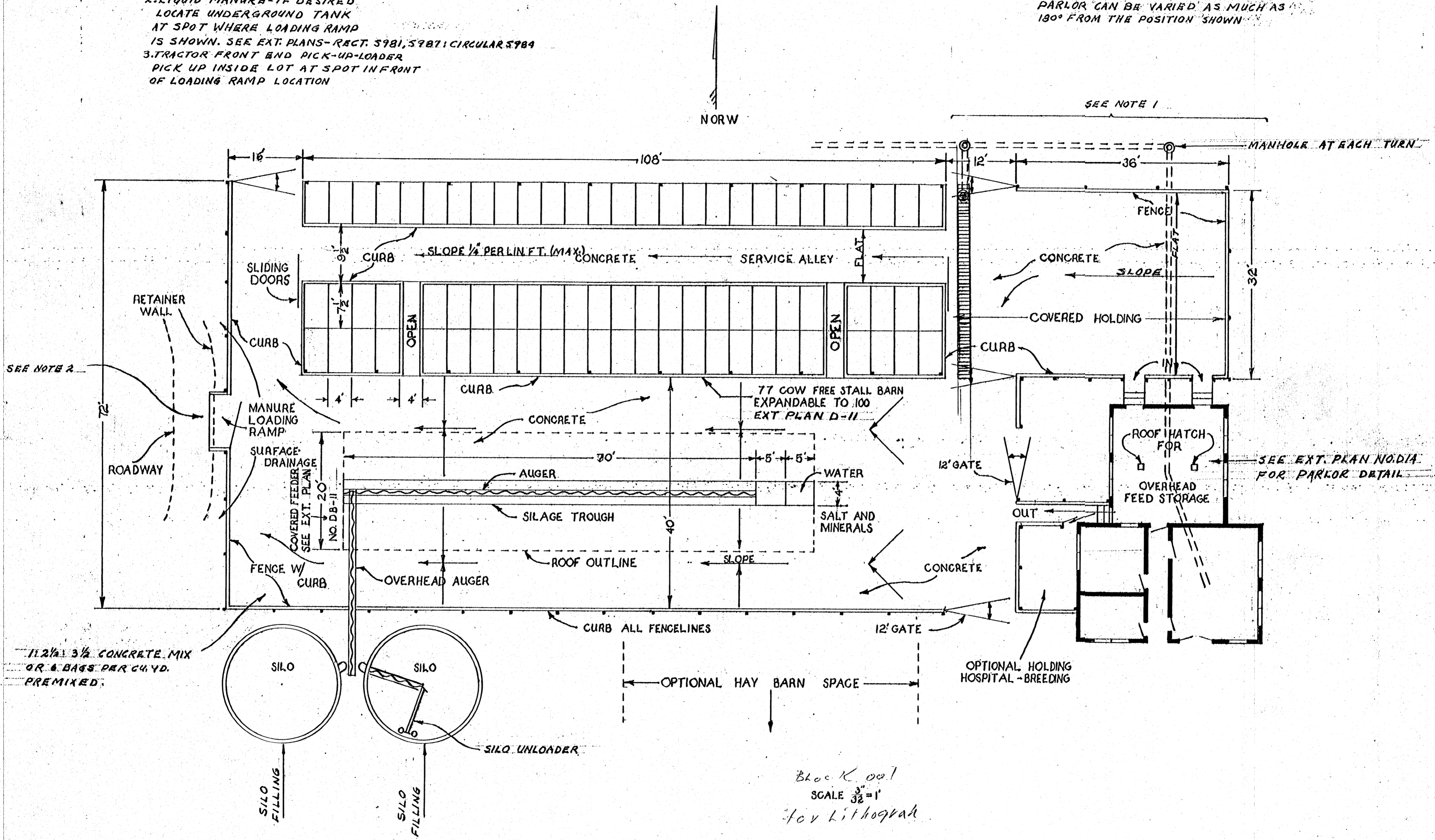


**NOTE 2 MANURE DISPOSAL**  
 1. MANURE LOADING RAMP AS SHOWN  
 2. LIQUID MANURE - IF DESIRED  
 LOCATE UNDERGROUND TANK  
 AT SPOT WHERE LOADING RAMP  
 IS SHOWN. SEE EXT. PLANS - RECT. 5981, 5987; CIRCULAR 5989  
 3. TRACTOR FRONT END PICK-UP-LOADER  
 PICK UP INSIDE LOT AT SPOT IN FRONT  
 OF LOADING RAMP LOCATION

**NOTE 1 THIS SECTION OF THE DAIRY LAYOUT  
 CAN BE VARIED TO SUIT THE PREMISES  
 THAT IS: THE FRONT OF THE MILKING  
 PARLOR CAN BE VARIED AS MUCH AS  
 180° FROM THE POSITION SHOWN**



<b>77 COW DAIRY LAYOUT</b>	
COOPERATIVE EXTENSION SERVICE STATE OF MISS., MISS. STATE UNIV. AND U.S. DEPT. OF AGRIC. COOPERATING	
DRAWN BY: DER.	CHECKED BY: L.M.
NO. D-13	SHEET 1 OF 1

No. 5885-C

Block 001  
 SCALE 3/32" = 1'  
 for Lithograph