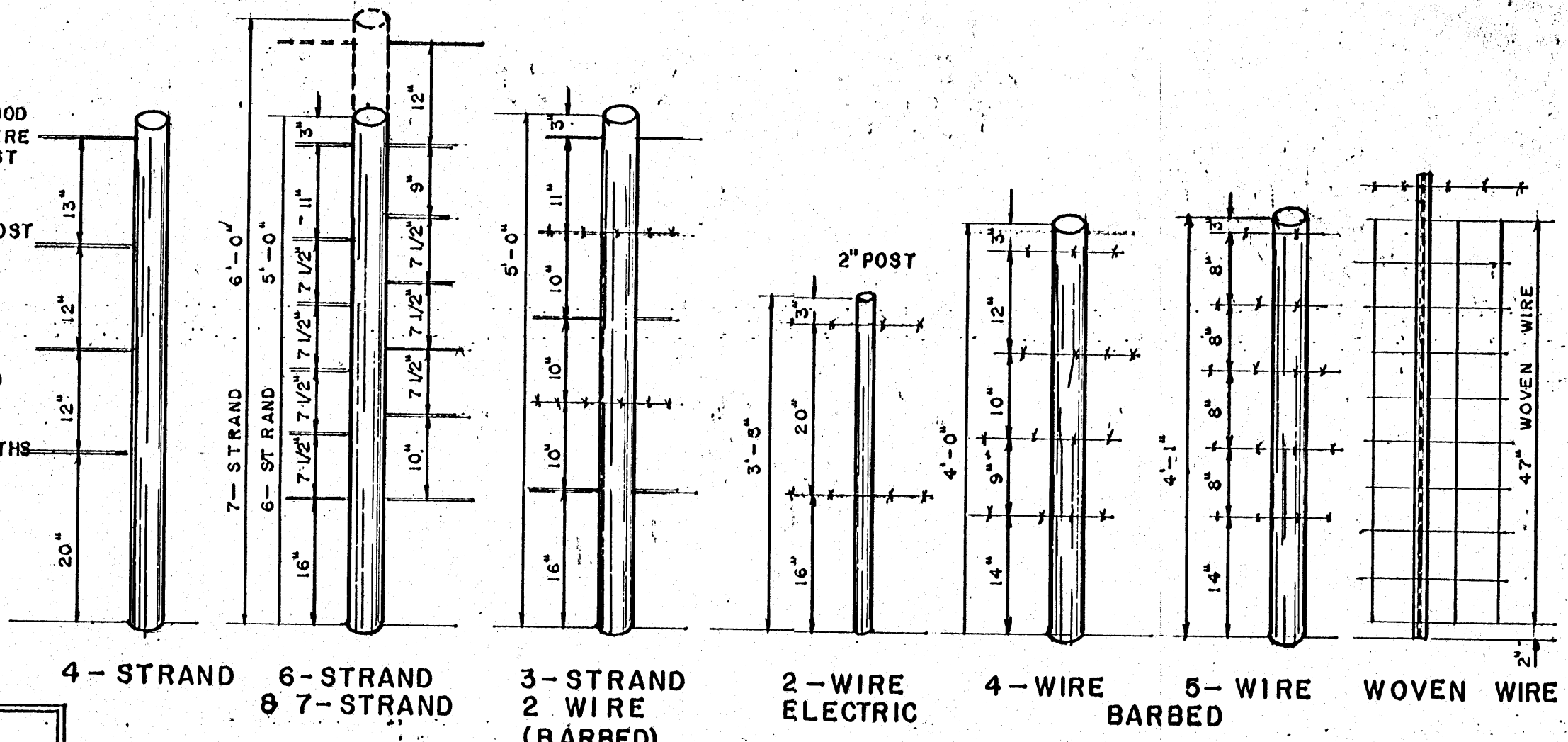


CORNER OR END - WOOD POSTS

CONSTRUCTION STEPS

THIS EXTRA STRONG FENCE CORNER, OR END, IS GOOD IN SOFT SOILS, OR WHERE DEADMAN ON CORNER POST WOULD OTHERWISE BE NECESSARY

1. SET ALL FENCE POSTS.
2. INSTALL BRACING.
3. FASTEN WIRE TO SECOND POST.
4. TIGHTEN FROM SECOND POST, AND COMPLETE LINE FENCE.
5. USING SHORT LENGTHS OF WIRE, CLOSE CORNER.



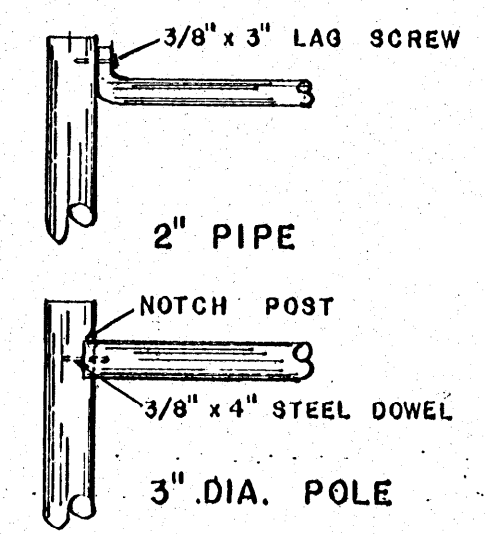
POST SIZES

END POST MIN. SIZES
 2 1/2" x 2 1/2" x 1/4" ANGLE
 2" I.D. STANDARD PIPE
 5" TOP WOOD POST - 8'-0" LONG

BRACE POST MIN. SIZE (WOOD)
 1st BRACE POST - 5" TOP, 8'-0" LONG
 2nd BRACE POST - 4" TOP, 8'-0" LONG

BRACE
 FOR ANGLE OR PIPE CORNER POST
 1 1/4" I.D. STANDARD PIPE
 2" x 2" x 1/4" OR 3/16" ANGLE
 FOR WOOD CORNER POSTS
 2" I.D. STANDARD PIPE
 2" x 2" x 1/4" OR 3/16" ANGLE

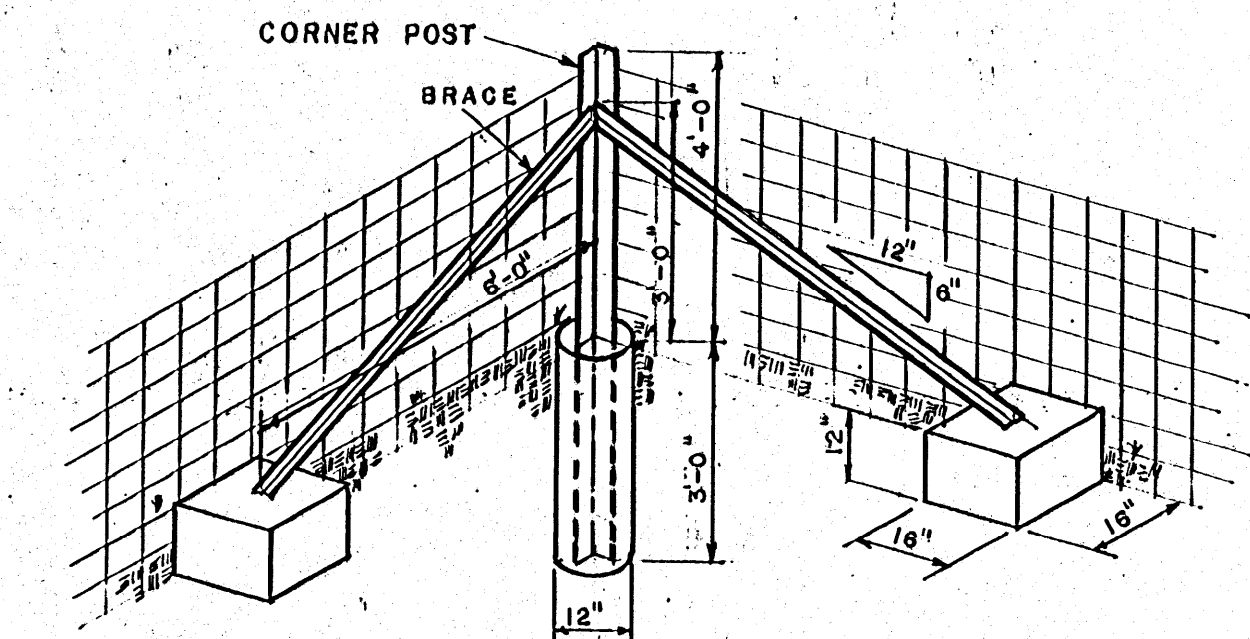
BRACES



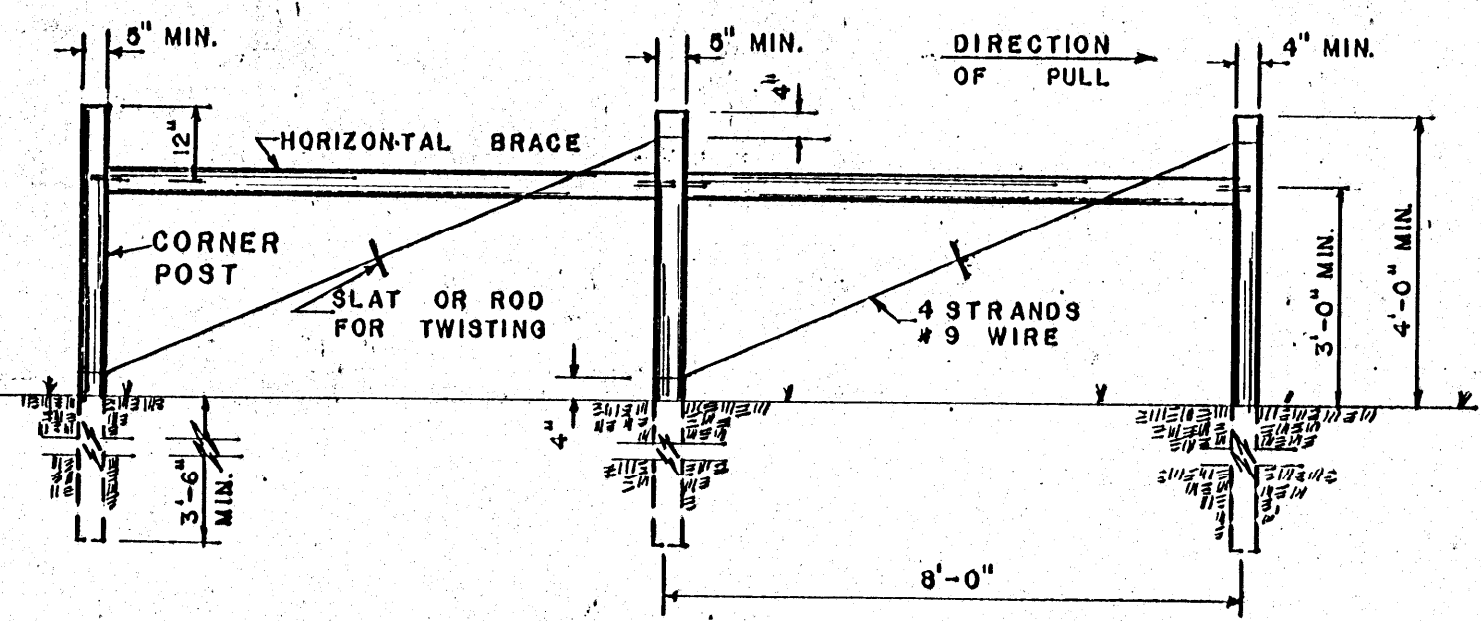
AUGER - ANCHORS CAN BRACE CORNERS & ENDS

- 4" TOP POSTS, 8'-0" O.C., SET 2'-6" DEEP.
 - 4-STRAND FENCE - FOR LOT PARTITIONS AND BOUNDARIES.
 - 6-STRAND FENCE - FOR PORTIONS OF LOT FENCES WHICH WILL HAVE TO RESTRAIN DRIVEN CATTLE - NEAR GATES AND ACCESS TO WORKING AREA.
 - 7-STRAND FENCE - FOR ALLEY TO WORKING AREA, AND LINES THE WORKING AREA WHERE THERE WILL NOT BE HEAVY DRIVING - HOLDING PEN PARTITIONS & BOUNDARIES.
- USE PLANK FENCES IN CROWDING AND WORKING AREAS.

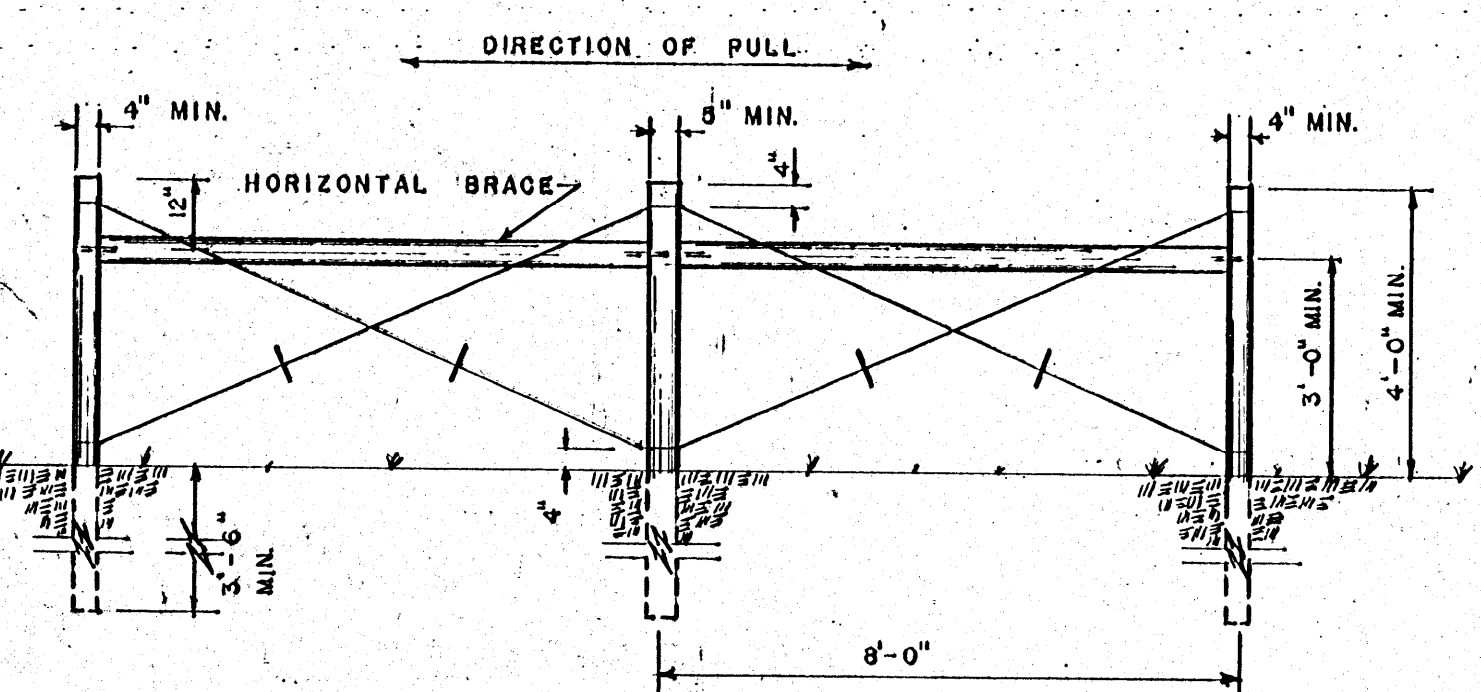
POSTS: STEEL OR 4" TOP WOOD
LINE FENCES



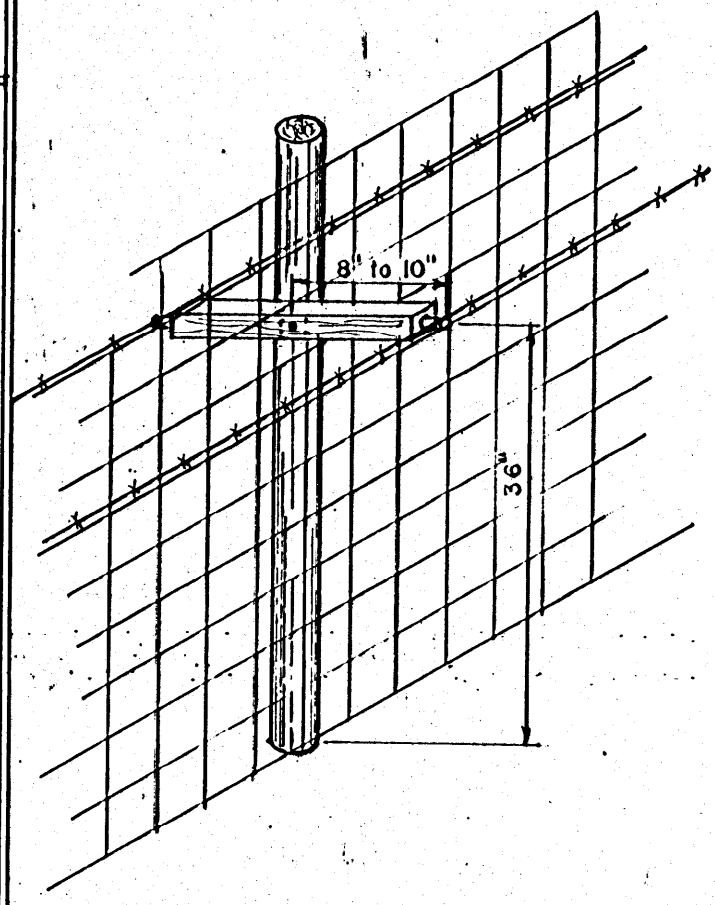
CORNER OR END - STEEL POSTS



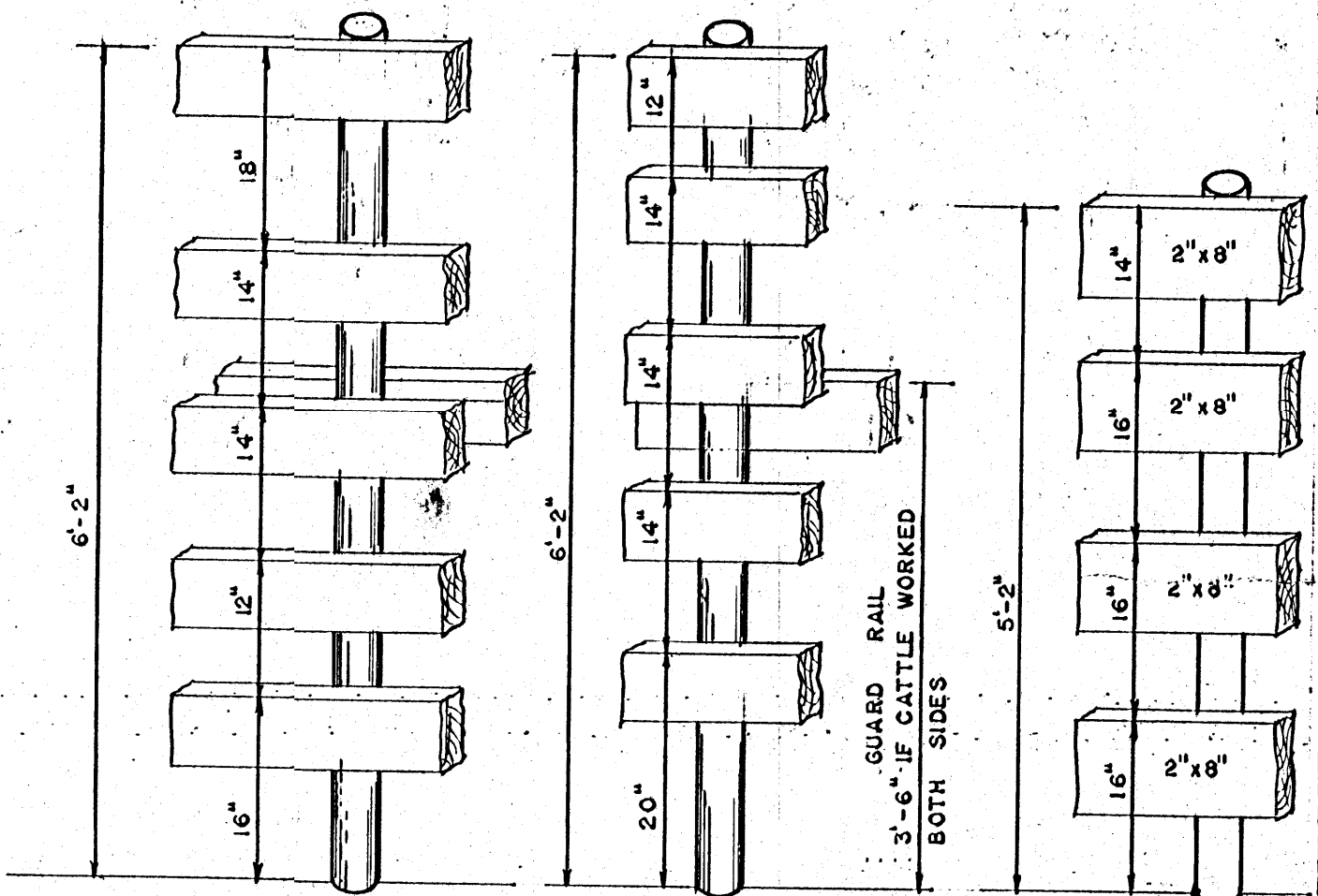
CORNER OR END - WOOD POSTS



WOOD PULL-POST
 FOR MIDDLE OF LONG FENCE,
 PLACE 860 FT. APART



PASTURE FENCE
 ADD ELECTRIC FENCE FOR BULLS



WORKING FENCES
 CORRAL, Paddock, YARDS, BULL PENS

FEED LOT LINE FENCES

FENCES

COOPERATIVE EXTENSION SERVICE
 STATE OF MISSISSIPPI
 MISSISSIPPI STATE UNIVERSITY
 AND
 UNITED STATES DEPARTMENT OF AGRICULTURE COOPERATING

DRAWN BY: R.F.W.	CHECKED BY: L.M.
DATE: JUNE '71	DWG. NO. 5961-D
	SHT. 1 OF 1