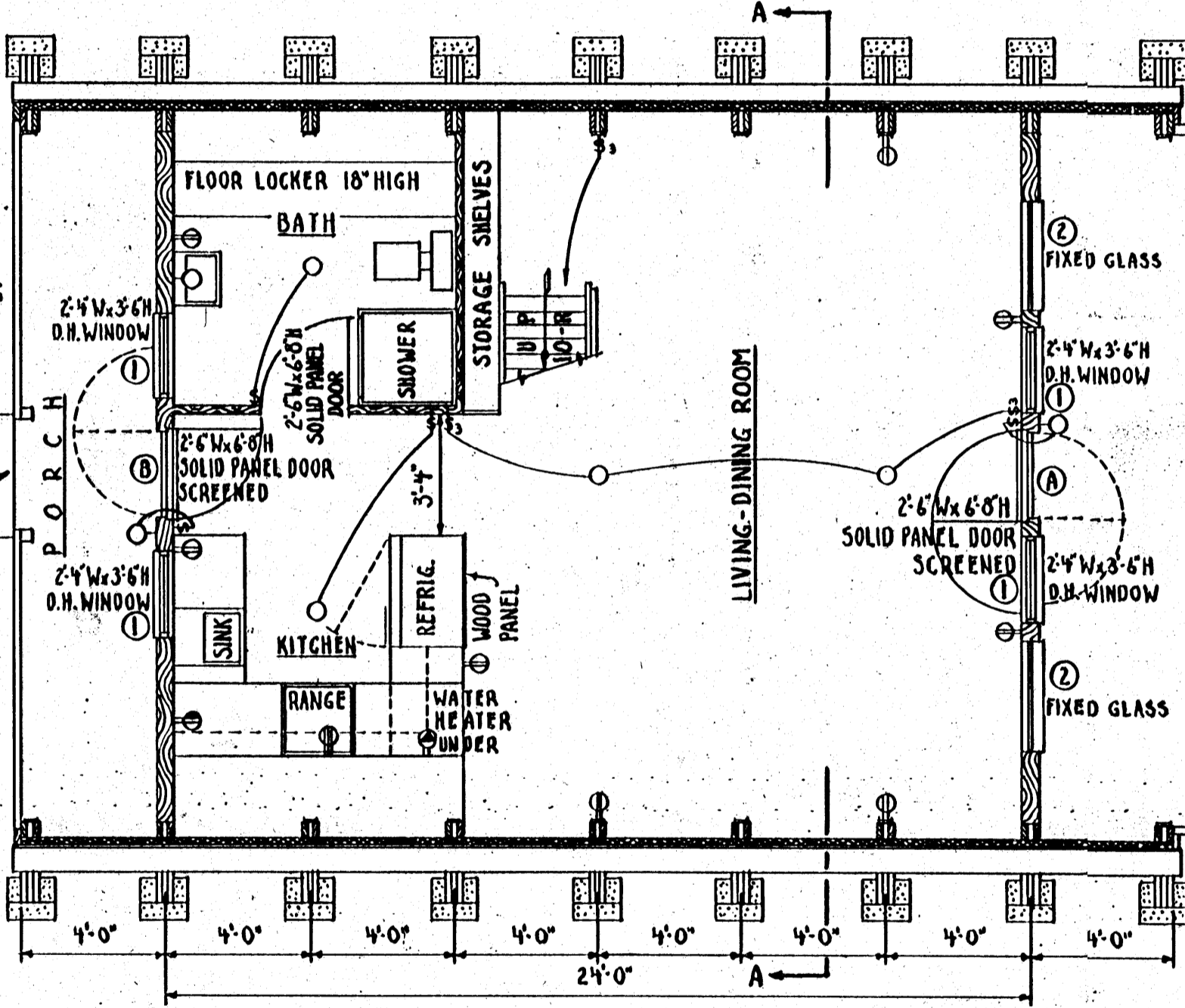


SECOND FLOOR PLAN

SCALE 1/4" = 1'-0"

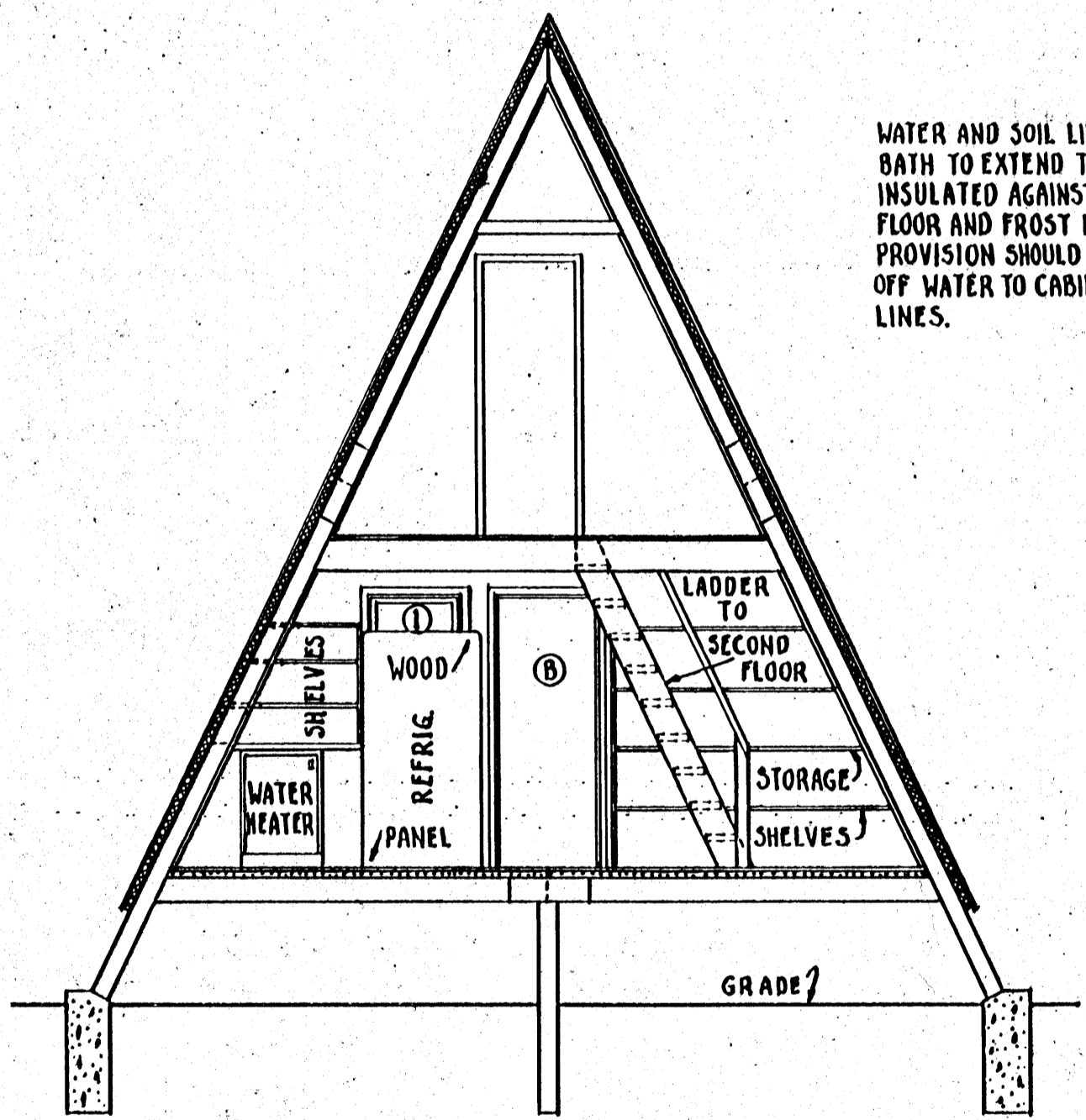
REAR WALL AT SECOND FLOOR MAY BE CONSTRUCTED AT END SET OF RAFTERS THEREBY INCREASING LENGTH OF BEDROOM. IF THIS IS DONE SUBSTITUTE A DOUBLE HUNG WINDOW FOR DOOR.



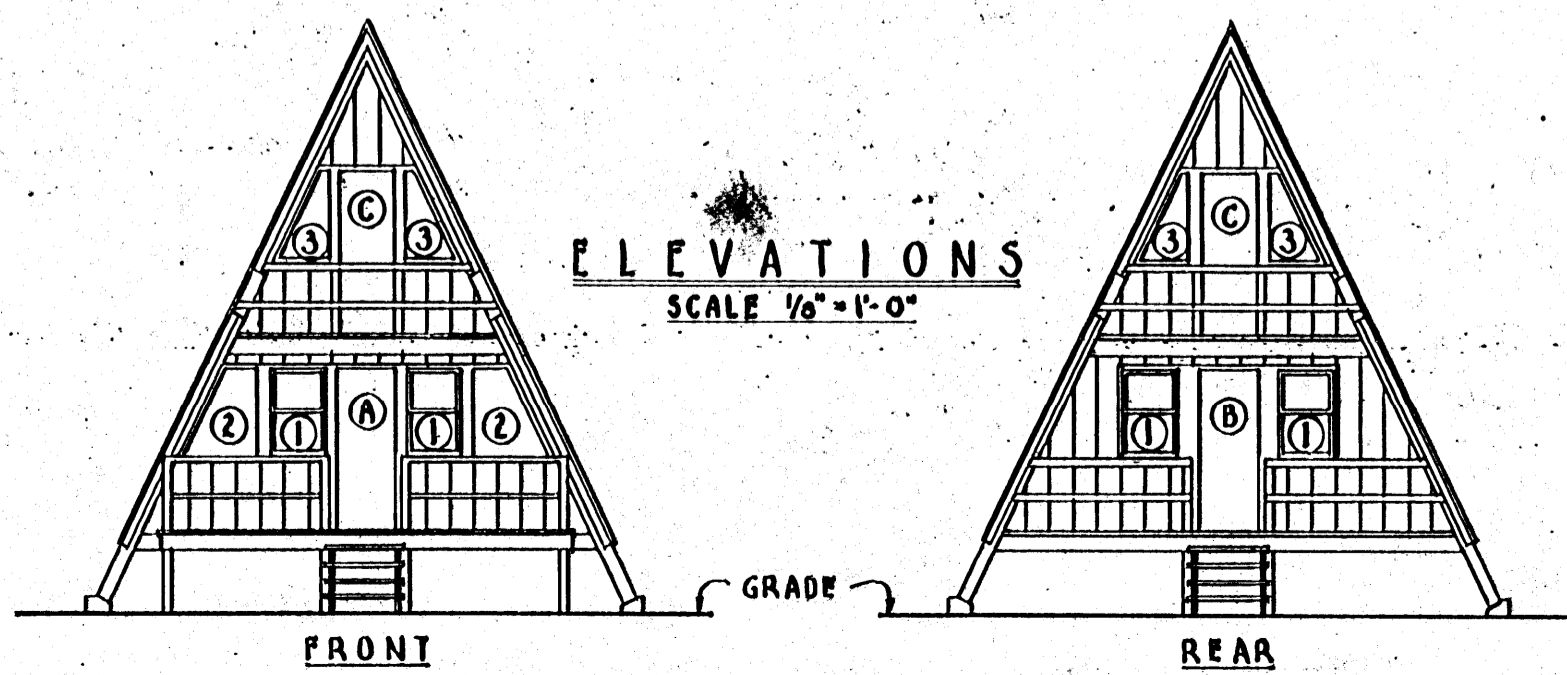
FIRST FLOOR PLAN

SCALE 1/4" = 1'-0"

WATER AND SOIL LINES FOR KITCHEN AND BATH TO EXTEND THRU FLOOR AND BE INSULATED AGAINST FREEZING BETWEEN FLOOR AND FROST LINE BELOW GRADE. PROVISION SHOULD BE MADE FOR SHUTTING OFF WATER TO CABIN AND DRAINING ALL LINES.



SECTION A-A  
SCALE 1/4" = 1'-0"



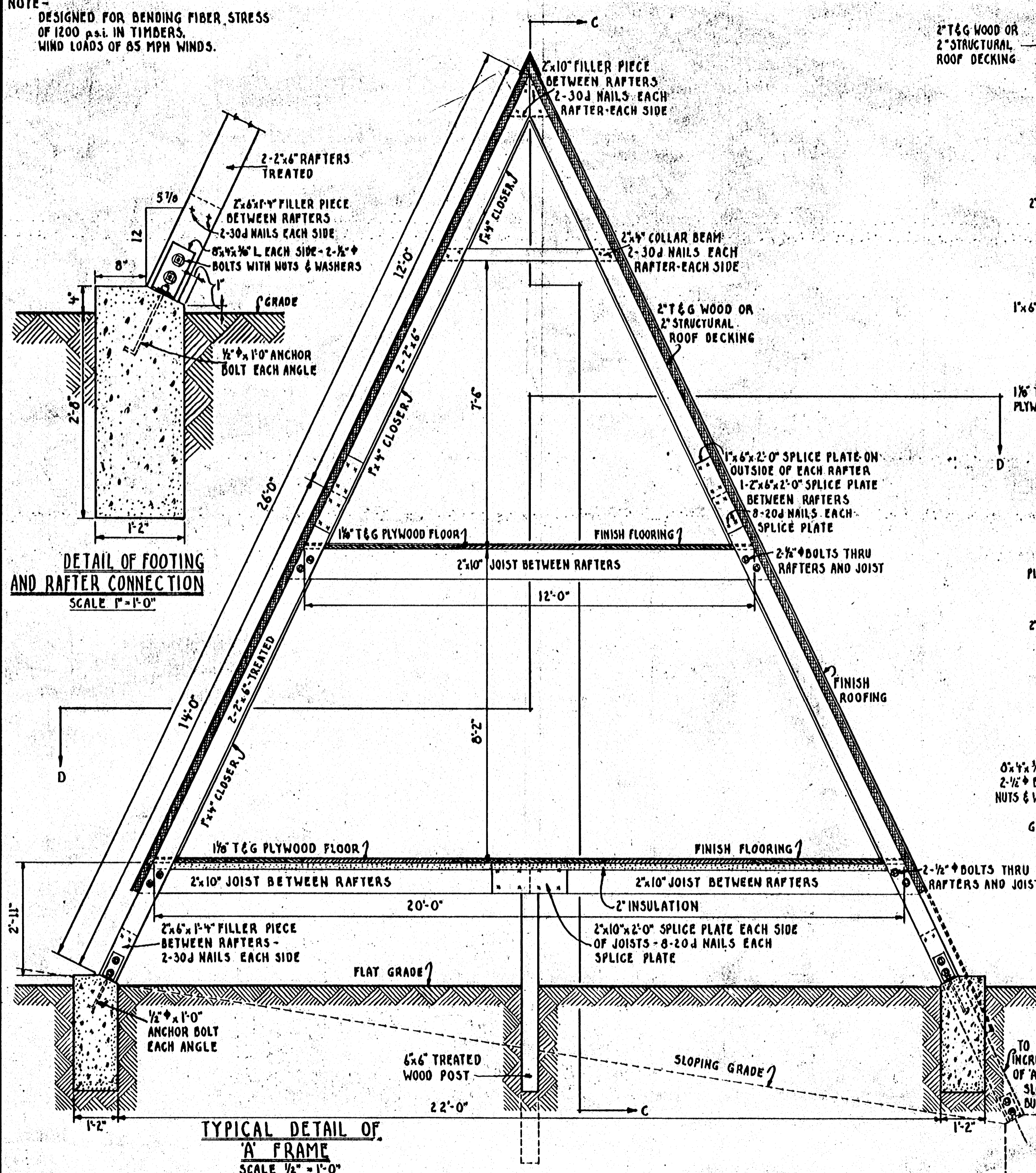
ELEVATIONS  
SCALE 1/8" = 1'-0"

COOPERATIVE EXTENSION WORK IN  
AGRICULTURE AND HOME ECONOMICS  
STATE OF MISSISSIPPI  
MISSISSIPPI STATE UNIVERSITY  
AND  
UNITED STATES DEPARTMENT OF AGRICULTURE COOPERATING

24'-0" A' FRAME CABIN

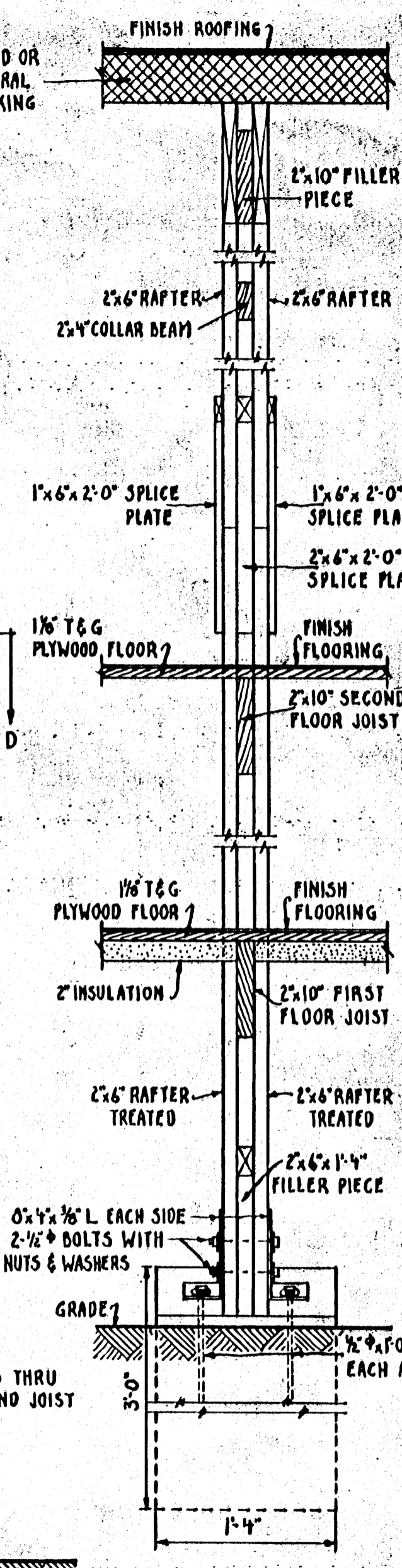
USDA 1963 # X. 5964 SHEET 1 OF 3

**NOTE -**  
 DESIGNED FOR BENDING FIBER STRESS  
 OF 1200 psi. IN TIMBERS.  
 WIND LOADS OF 85 MPH WINDS.

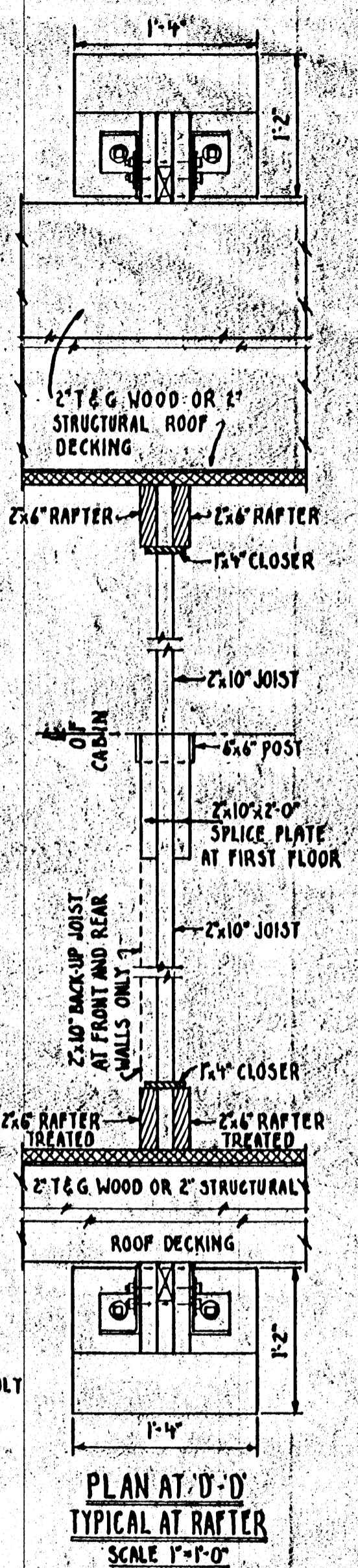


**DETAIL OF FOOTING AND RAFTER CONNECTION**  
 SCALE 1" = 1'-0"

**TYPICAL DETAIL OF 'A' FRAME**  
 SCALE 1/2" = 1'-0"



**SECTION AT 'C'-'C' TYPICAL AT RAFTER**  
 SCALE 1" = 1'-0"



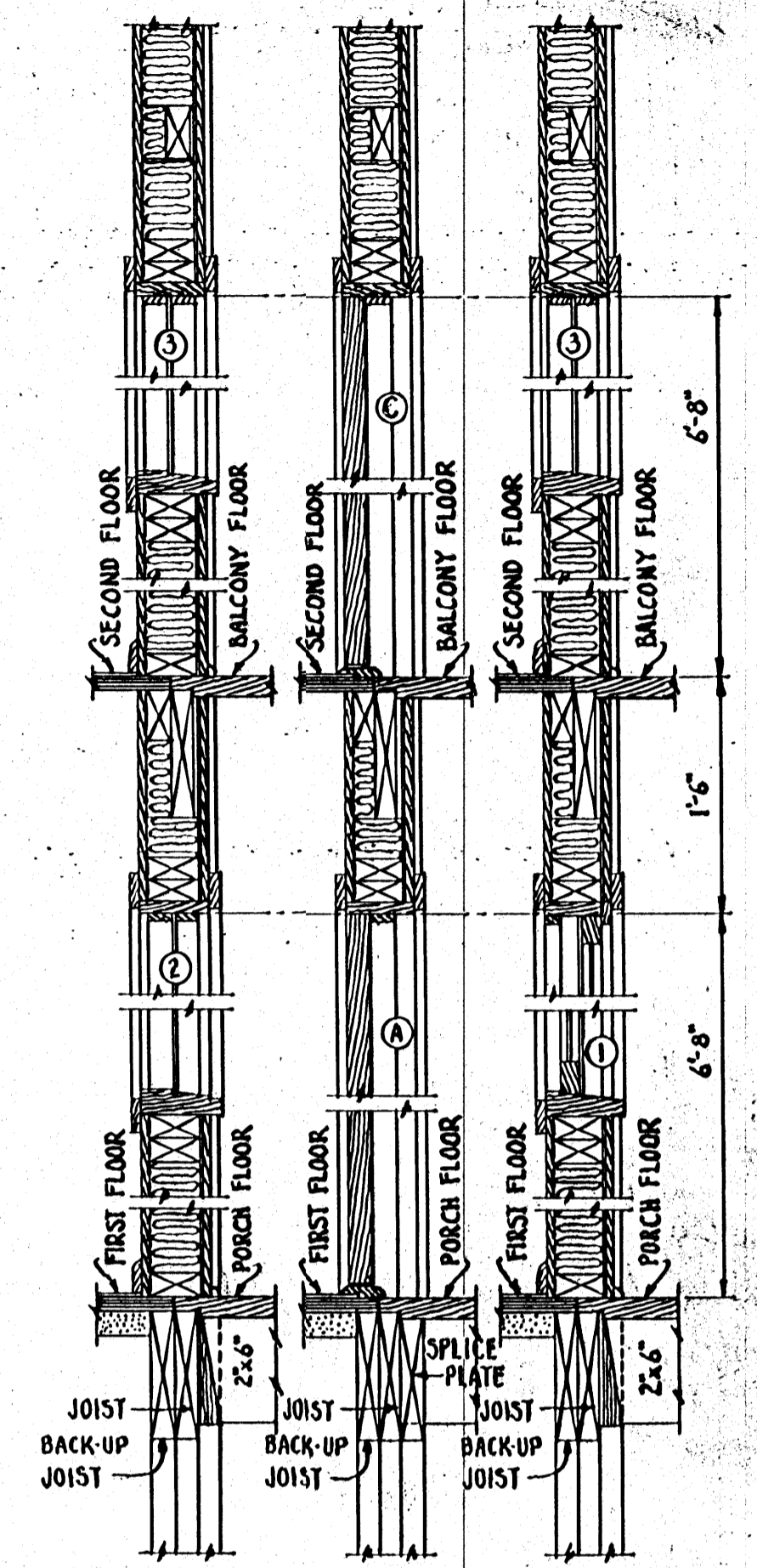
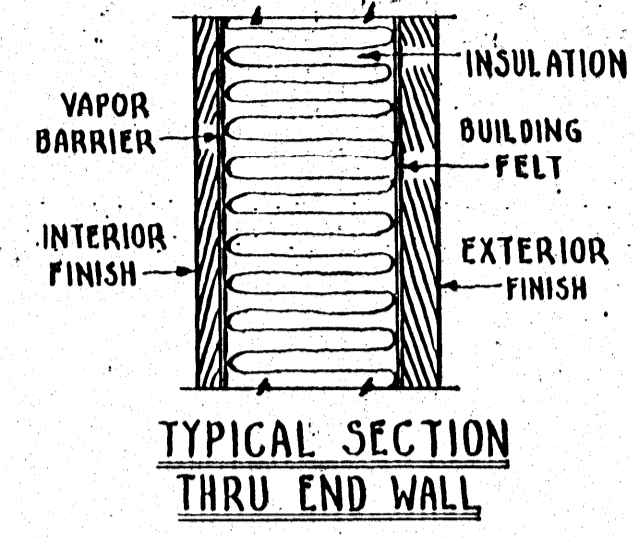
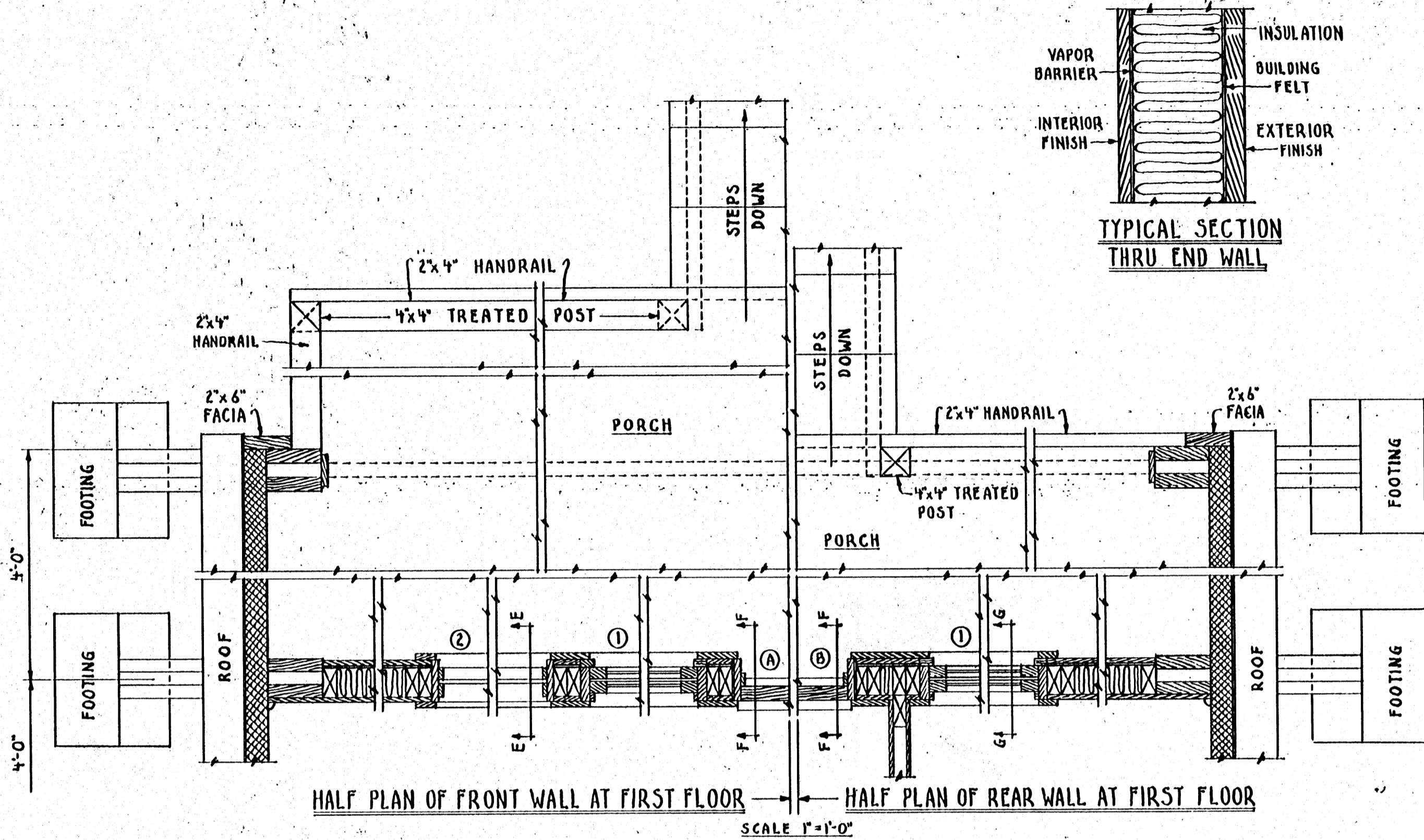
**PLAN AT 'D'-'D' TYPICAL AT RAFTER**  
 SCALE 1" = 1'-0"

TO INCREASE LENGTH OF LOWER MEMBER OF 'A' FRAME AS SHOWN FOR SLOPING GRADE USE 2x8" MEMBERS BUT INCREASE MUST NOT EXCEED 3'-6"

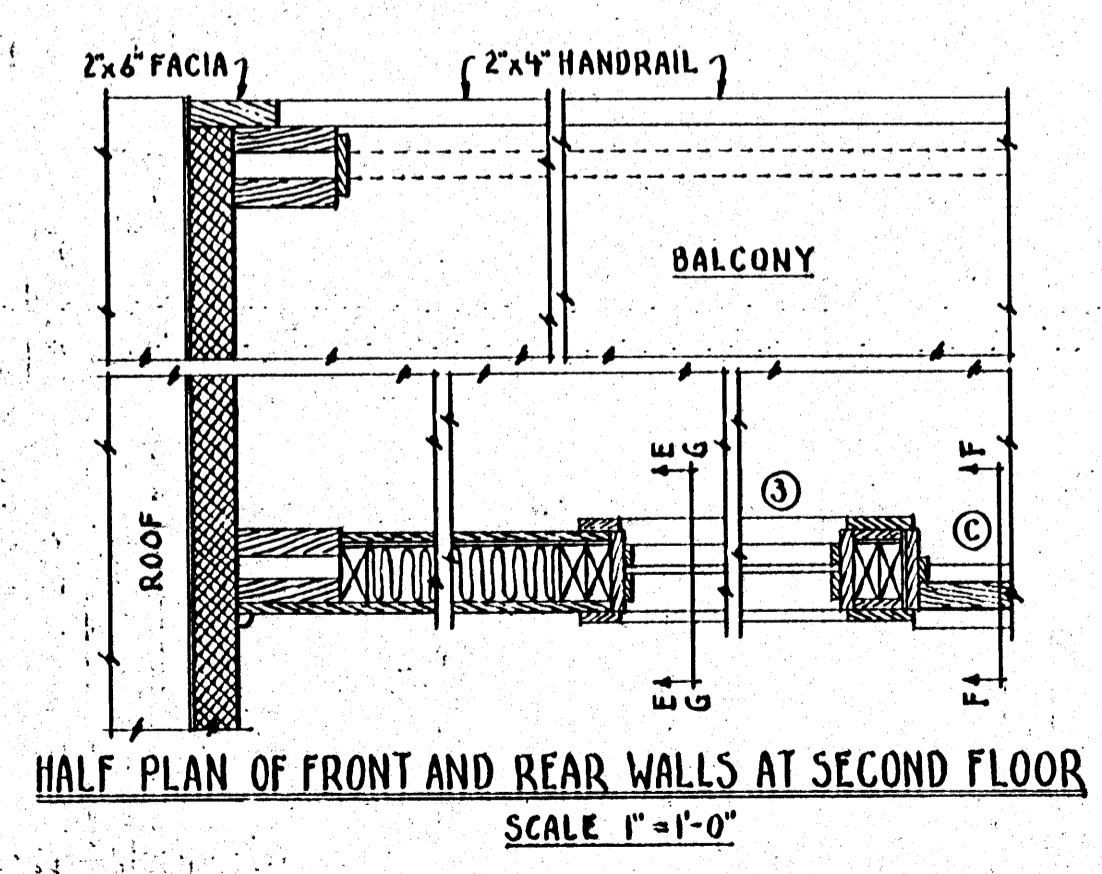
COOPERATIVE EXTENSION WORK IN  
 AGRICULTURE AND HOME ECONOMICS  
 STATE OF MISSISSIPPI  
 MISSISSIPPI STATE UNIVERSITY  
 AND  
 UNITED STATES DEPARTMENT OF AGRICULTURE COOPERATING

**24'-0" 'A' FRAME CABIN**

USDA 1963 EX. 5964 SHEET 2 OF 3



NOTE - PORCH CONSTRUCTION - 2" PLANKING ON 2x6" FRAMING - 2'-0" O.C.



COOPERATIVE EXTENSION WORK IN  
 AGRICULTURE AND HOME ECONOMICS  
 STATE OF MISSISSIPPI  
 MISSISSIPPI STATE UNIVERSITY  
 AND  
 UNITED STATES DEPARTMENT OF AGRICULTURE COOPERATING

24'-0" A FRAME CABIN

USDA 1963 EX. 5964 SHEET 3 OF 3