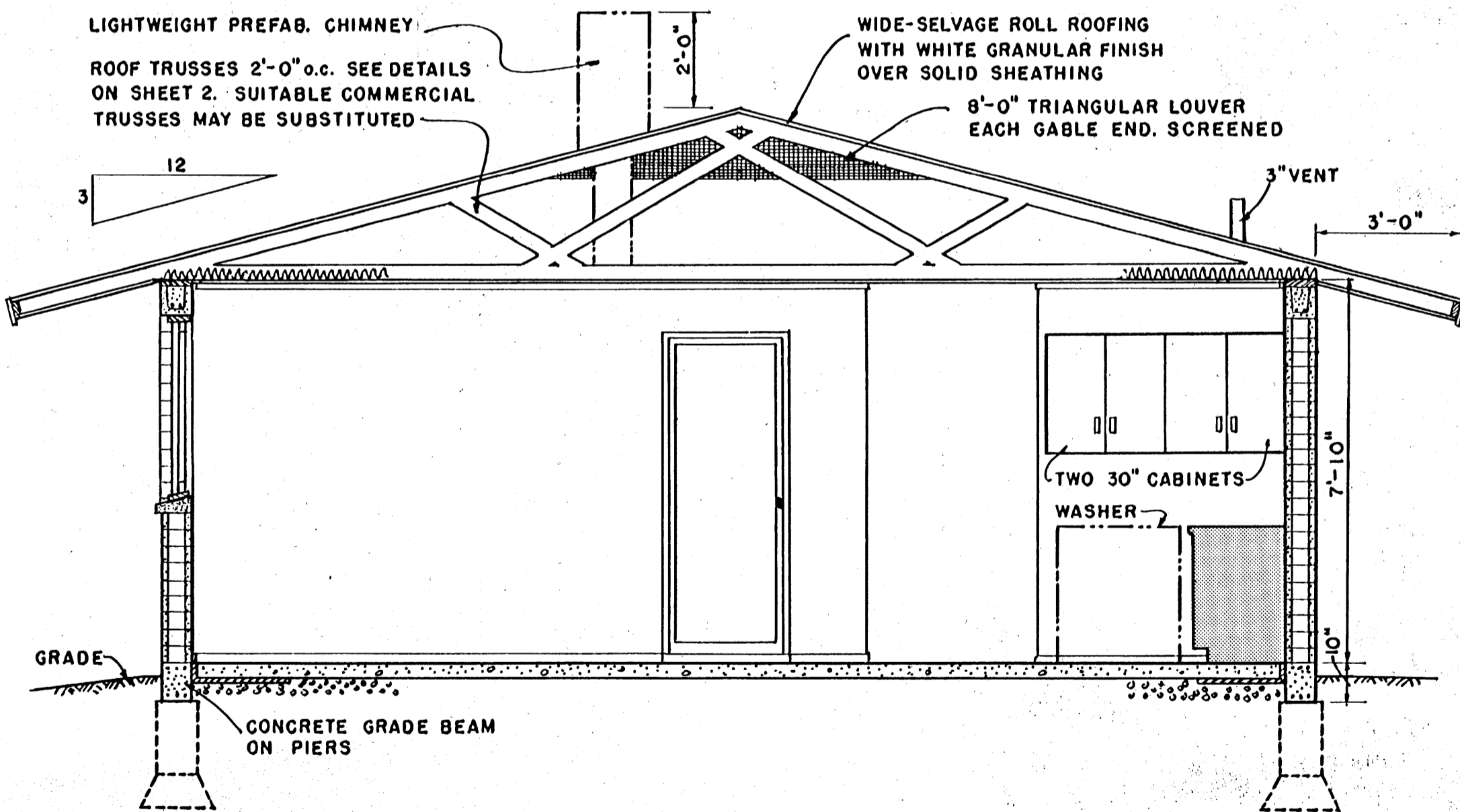


PERSPECTIVE

LIGHTWEIGHT PREFAB. CHIMNEY  
 ROOF TRUSSES 2'-0" o.c. SEE DETAILS  
 ON SHEET 2. SUITABLE COMMERCIAL  
 TRUSSES MAY BE SUBSTITUTED

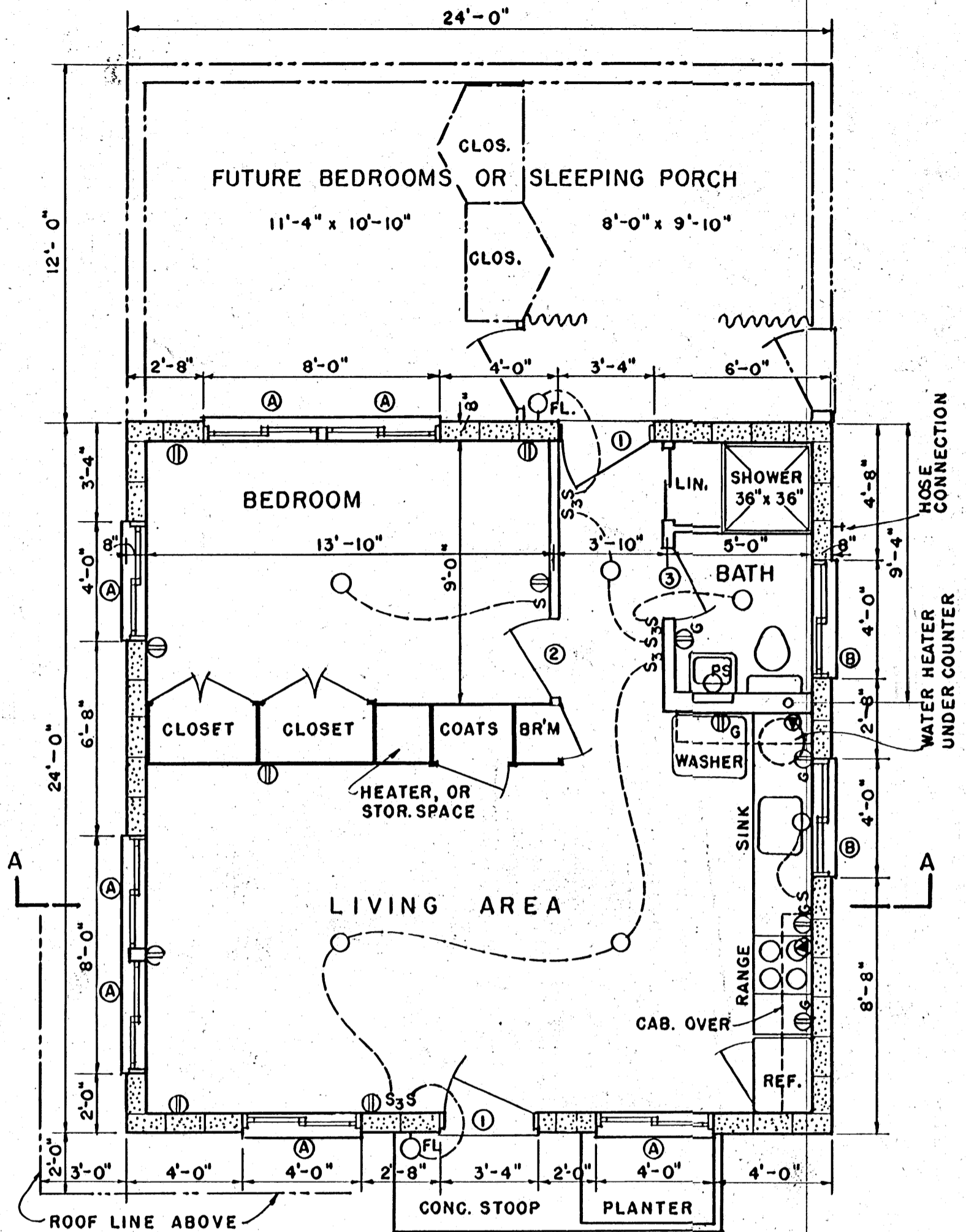
WIDE-SELVAGE ROLL ROOFING  
 WITH WHITE GRANULAR FINISH  
 OVER SOLID SHEATHING  
 8'-0" TRIANGULAR LOUVER  
 EACH GABLE END, SCREENED



SECTION A-A  
 SCALE 3/8" = 1'-0"

FOR ECONOMY AND EASE OF CONSTRUCTION, APPLY THE  
 INTERIOR WALL, CEILING AND FLOOR FINISH BEFORE  
 ERECTING ANY PARTITIONS. THIS WILL ALSO PERMIT  
 FUTURE REMOVAL OR MOVING OF ANY PARTITIONS  
 EXCEPT THOSE WHICH CONTAIN PLUMBING.

THE FINISH GRADE SHOULD SLOPE AWAY  
 FROM THE CABIN ON ALL SIDES.  
 SEE DETAILS ON SHEET 2 FOR ALTERNATE  
 FOUNDATION DETAILS.



PLAN  
 SCALE 1/4" = 1'-0"

ROUGH WINDOW SCHEDULE (OPENINGS)

- (A) 4'-0" WIDE X 4'-0" HIGH
- (B) 4'-0" " X 2'-8" "

PACKAGED SLIDING WINDOWS  
 TYPE AND TRIM TO BE AS  
 SELECTED BY OWNER.

DOOR SCHEDULE

- (1) 3'-0" X 6'-8" EXTERIOR
- (2) 2'-8" X 6'-8" INTERIOR
- (3) 2'-6" X 6'-8" "

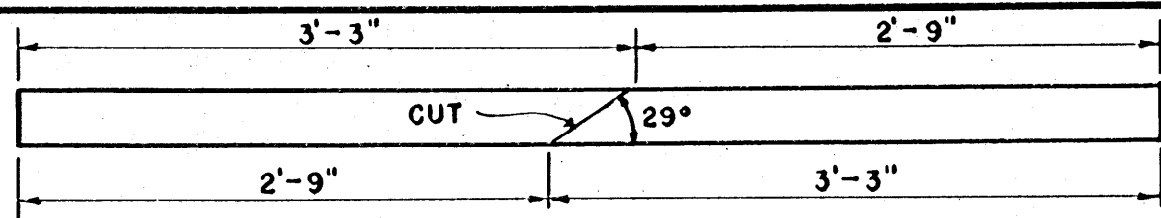
ELECTRICAL SYMBOLS

- S SWITCH
- S<sub>3</sub> THREE-WAY SWITCH
- CEILING FIXTURE, RECESSED
- <sub>PS</sub> WALL FIXTURE, PULL SWITCH
- <sub>FL</sub> FLOODLIGHT
- <sub>2</sub> DUPLEX CONVENIENCE OUTLET
- <sub>G</sub> DUP. CONV. OUTLET WITH GROUND
- ⊙ 230 VOLT, RANGE & WATER HEATER

COOPERATIVE EXTENSION WORK IN  
 AGRICULTURE AND HOME ECONOMICS  
 STATE OF MISSISSIPPI  
 MISSISSIPPI STATE UNIVERSITY  
 AND  
 UNITED STATES DEPARTMENT OF AGRICULTURE COOPERATING

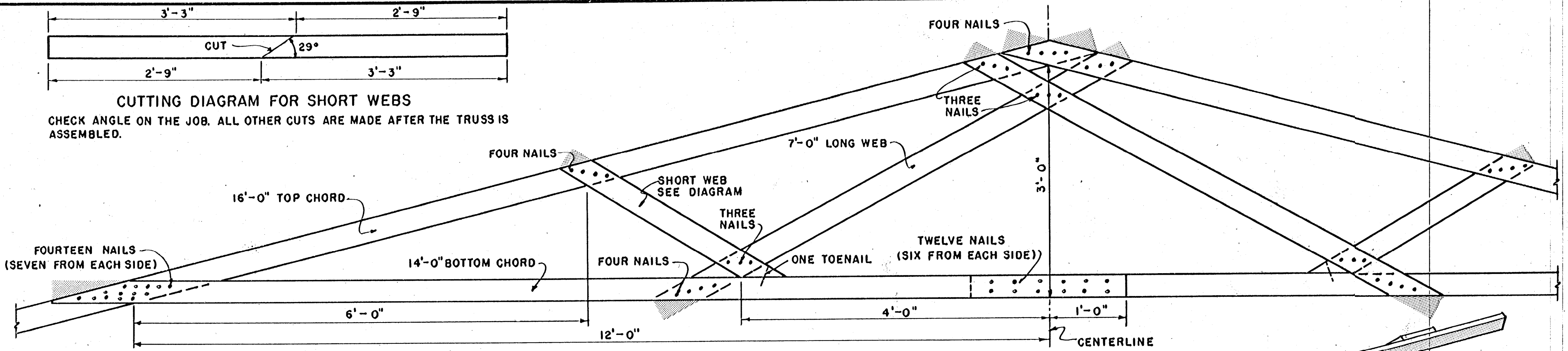
**CABIN**

PCA '64 EX. 5968 SHEET 1 OF 3

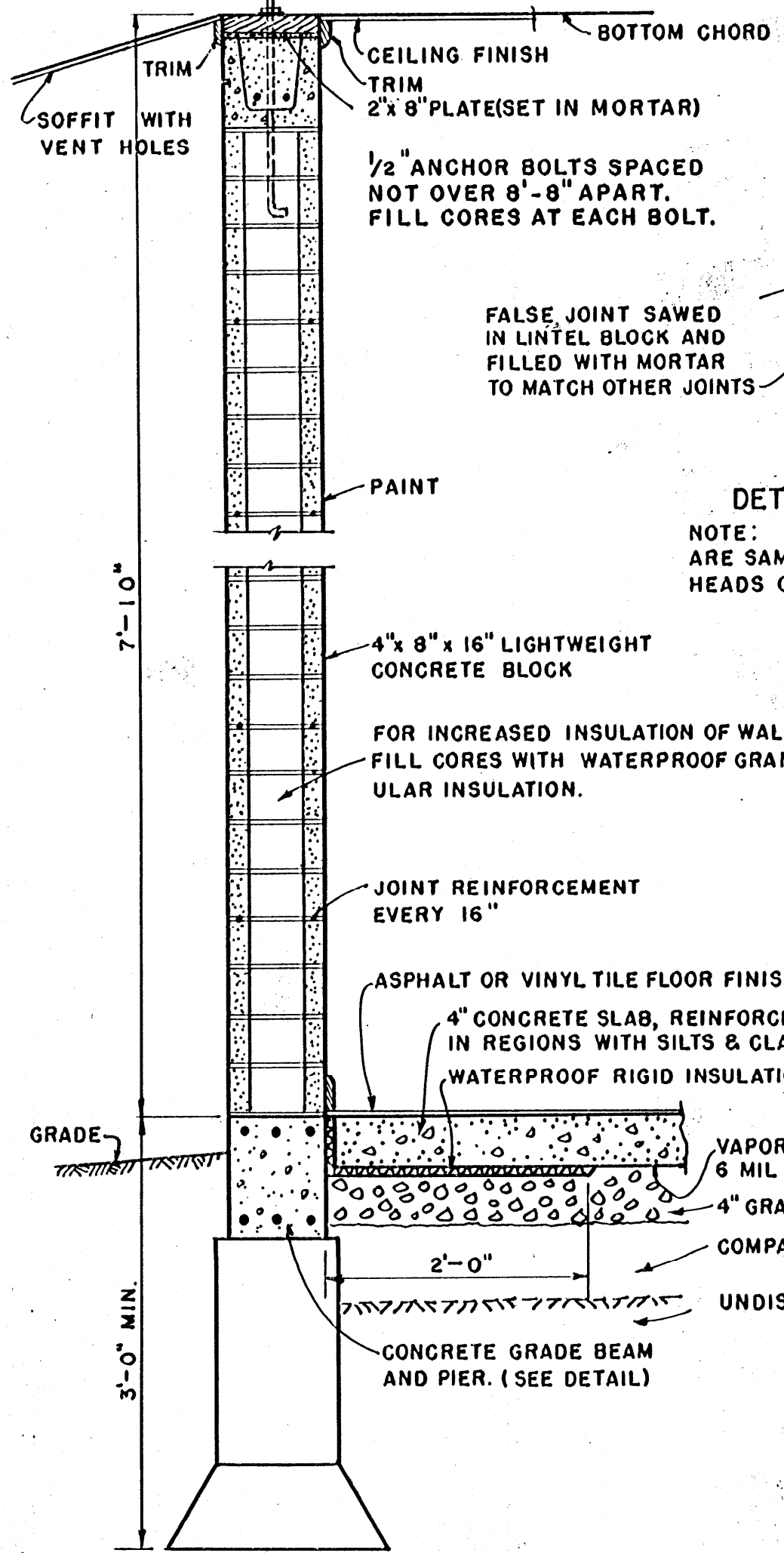


**CUTTING DIAGRAM FOR SHORT WEBS**

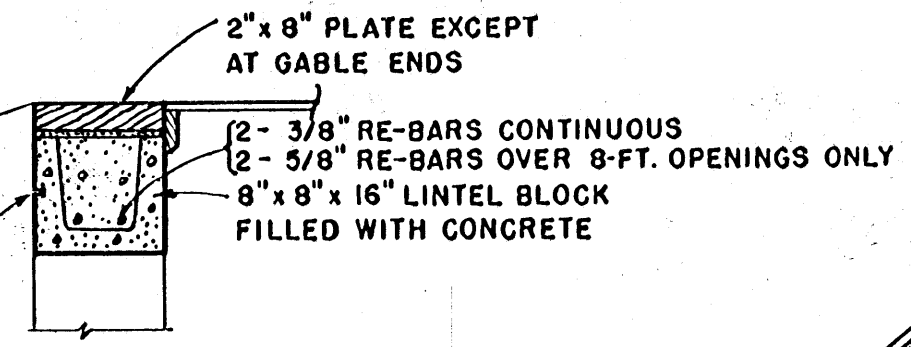
CHECK ANGLE ON THE JOB. ALL OTHER CUTS ARE MADE AFTER THE TRUSS IS ASSEMBLED.



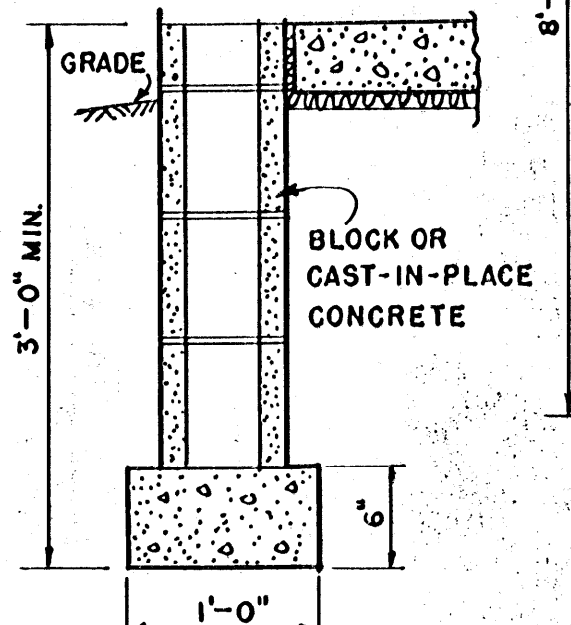
**TRUSS LAYOUT & FASTENING DETAILS**



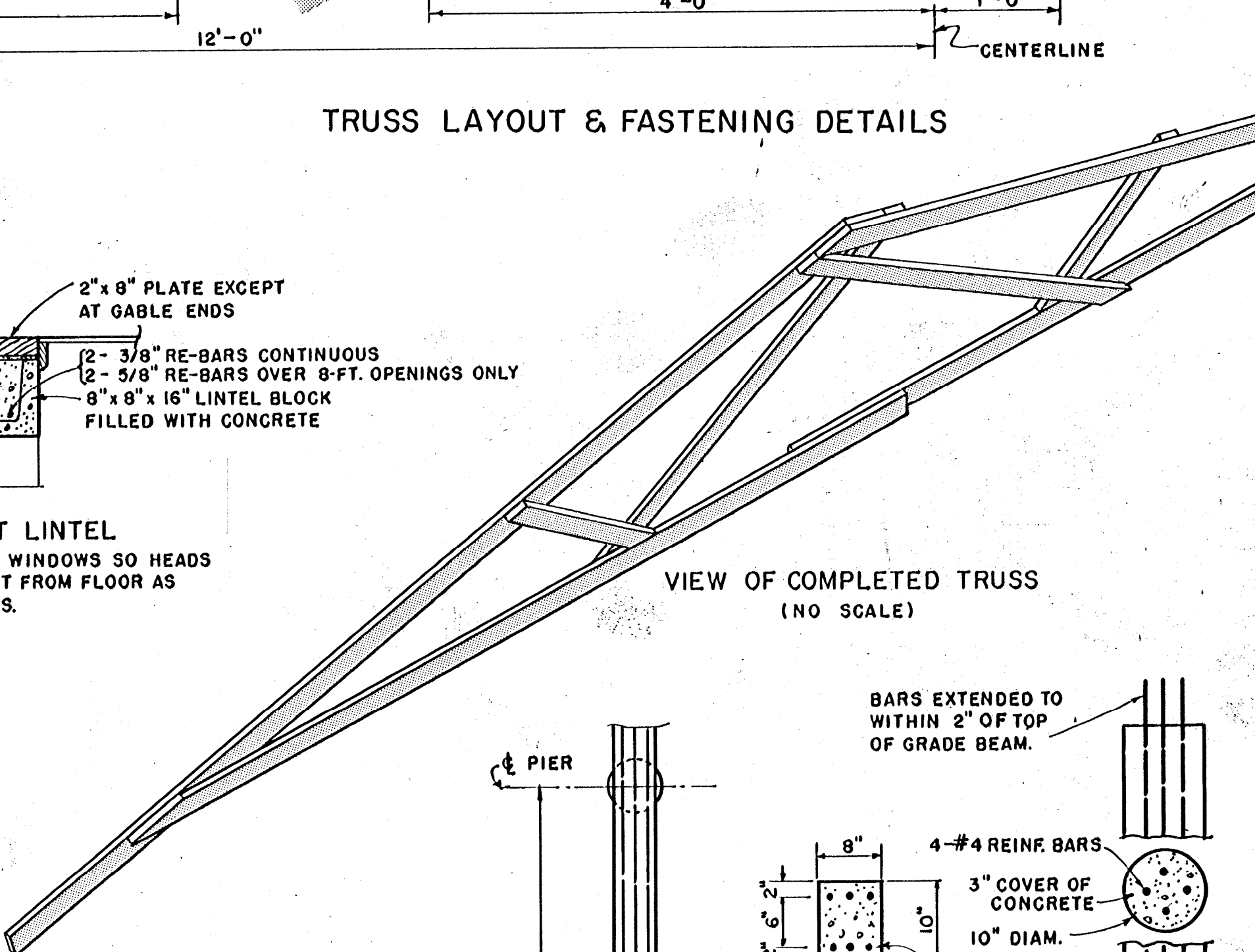
**TYPICAL WALL CONSTRUCTION**  
SCALE 1" = 1'-0"



**DETAIL AT LINTEL**  
NOTE: INSTALL WINDOWS SO HEADS ARE SAME HEIGHT FROM FLOOR AS HEADS OF DOORS.



**CONCRETE MASONRY FOUNDATION**



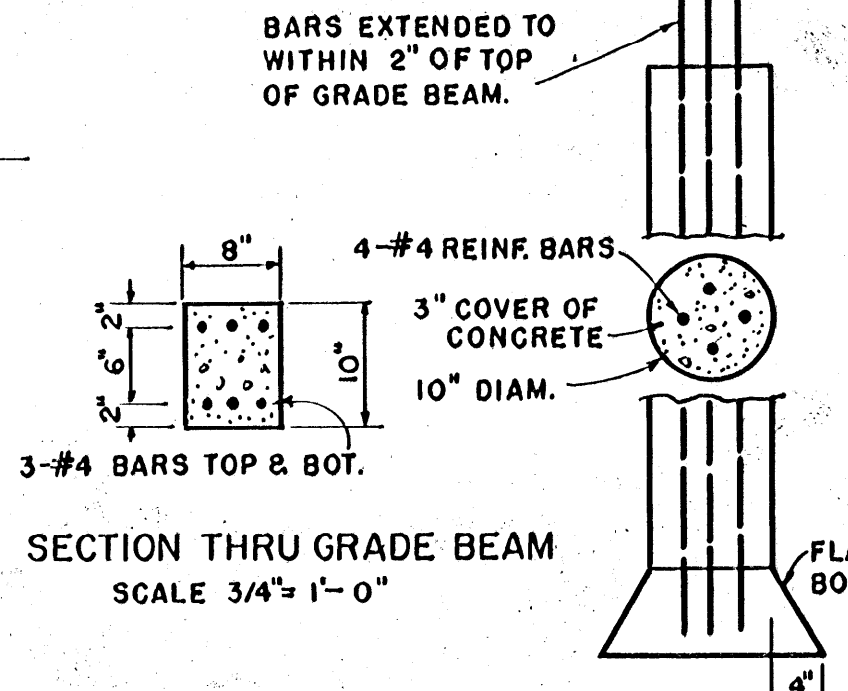
THIS TRUSS IS DESIGNED TO SUPPORT LOADS UP TO 70 LBS. PER FOOT OF SPAN, INCLUDING THE WEIGHT OF THE ROOF.  
ALL LUMBER SHALL BE STRESS GRADED TO PROVIDE 1500 PSI FIBER STRESS IN BENDING, AND 1350 PSI IN COMPRESSION.

**MATERIALS FOR ONE TRUSS**

TOP CHORD.....	2 PCS	2" x 4" x 16'-0"
BOTTOM CHORD.....	2 "	2" x 4" x 14'-0"
LONG WEBS.....	1 "	2" x 4" x 14'-0"
SHORT WEBS.....	1 "	2" x 4" x 6'-0"
NAILS.....	2 1/2 LB.	20d COMMON

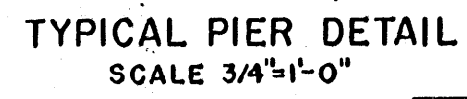
ALL PROJECTING NAILS ARE TO BE CLINCHED.

TRUSSES SHOULD BE SECURELY FASTENED TO THE SUPPORTING STRUCTURE WITH COMMERCIAL FRAMING ANCHORS.

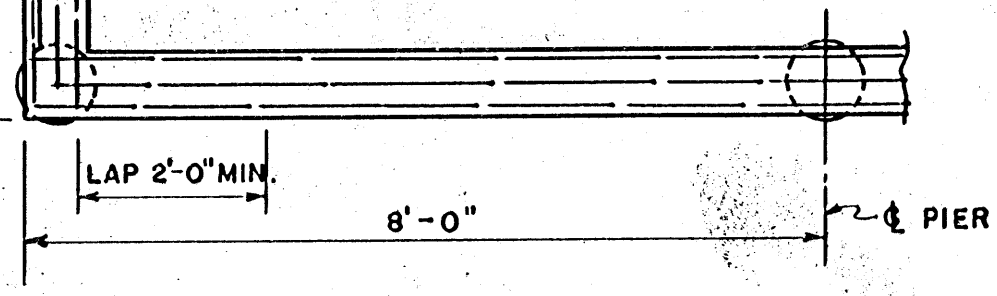


**SECTION THRU GRADE BEAM**  
SCALE 3/4" = 1'-0"

NOTE: GRADE BEAM TO EXTEND AROUND PERIMETER OF CABIN.



NOTE: FOUNDATIONS SHOULD EXTEND TO FIRM EARTH AND BELOW FROST LINE.



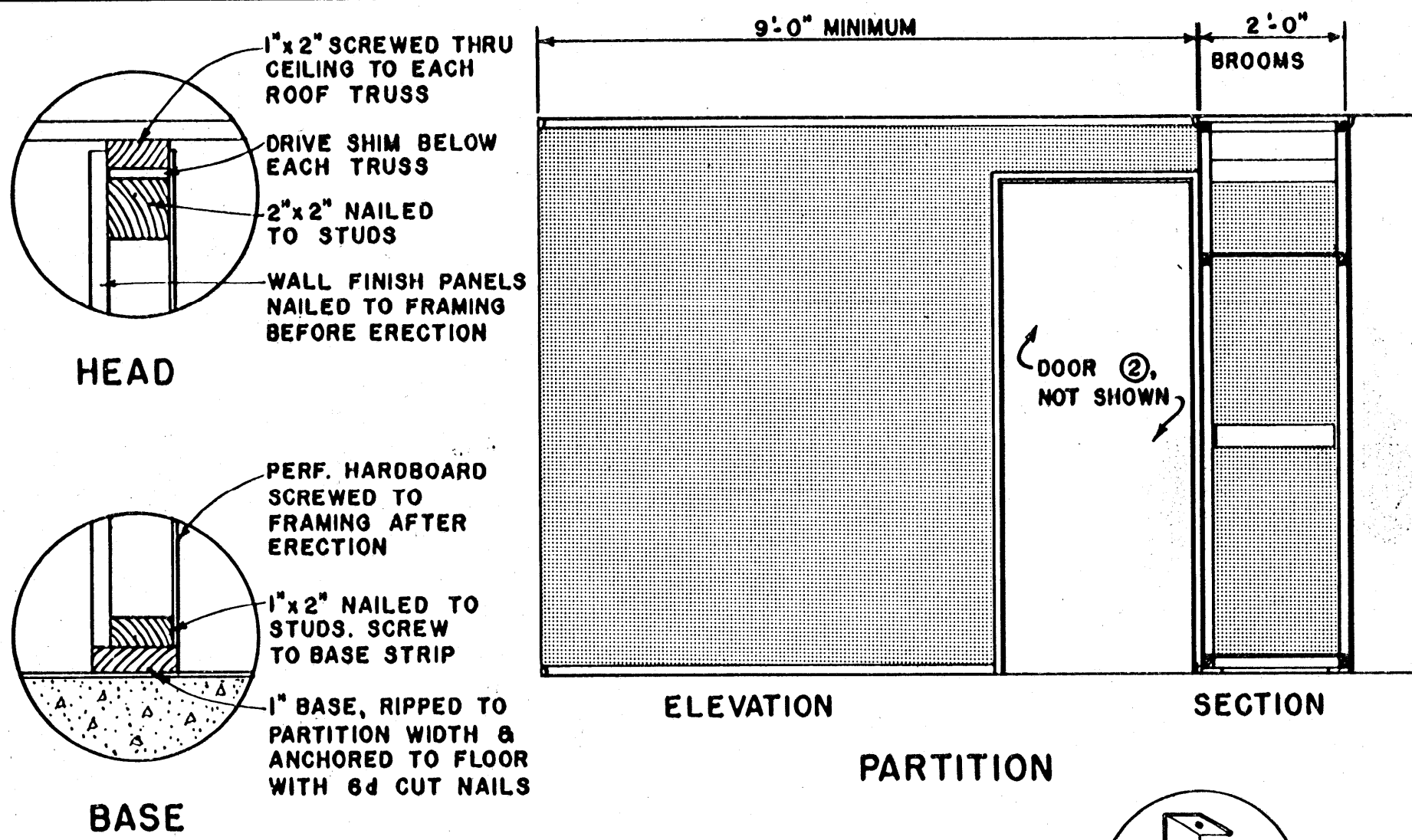
**PLAN OF GRADE BEAM**  
SCALE 1/2" = 1'-0"

SCALE: 1" = 1'-0" EXCEPT AS NOTED.

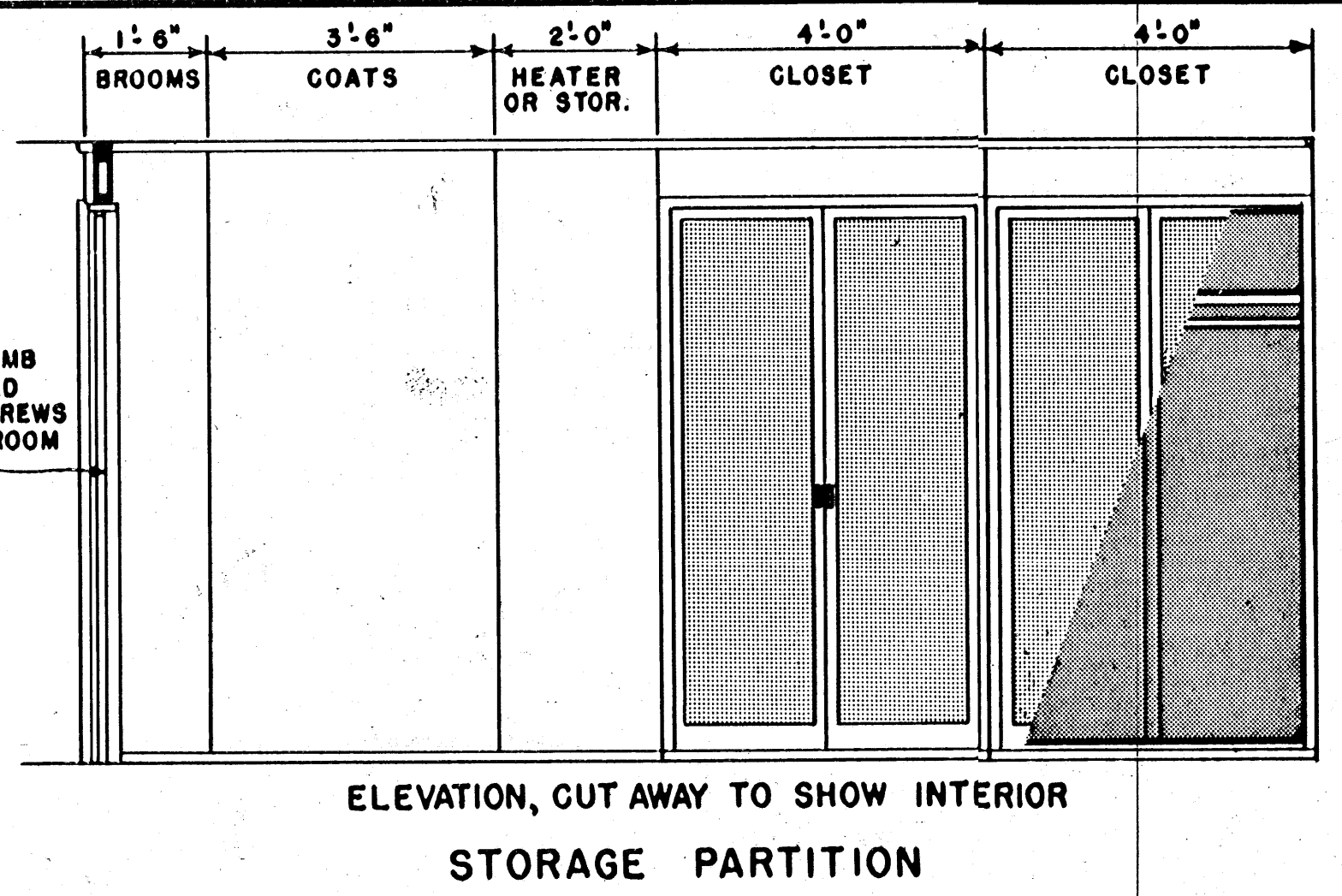
COOPERATIVE EXTENSION WORK IN  
AGRICULTURE AND HOME ECONOMICS  
STATE OF MISSISSIPPI  
MISSISSIPPI STATE UNIVERSITY  
AND  
UNITED STATES DEPARTMENT OF AGRICULTURE COOPERATING

**CABIN**

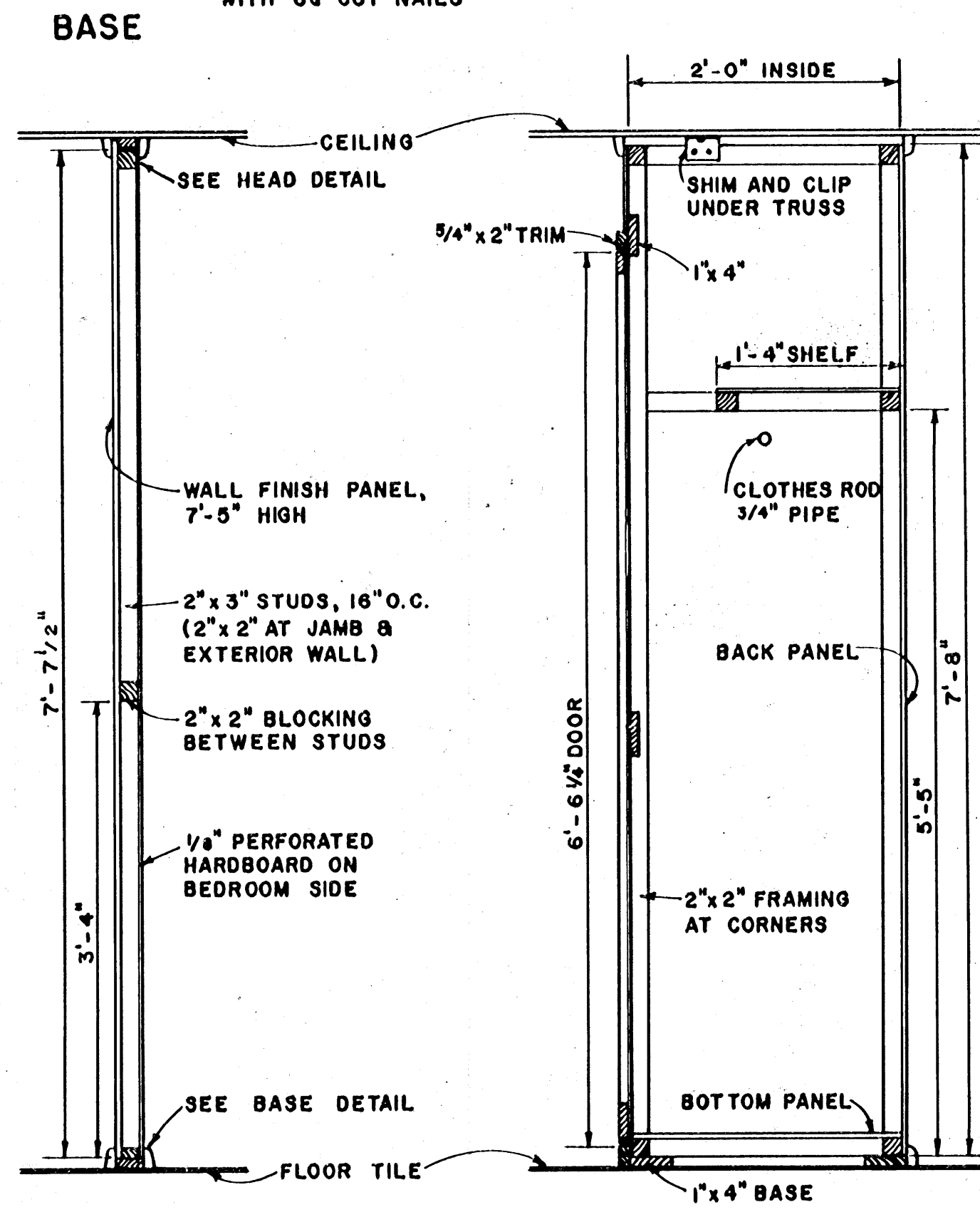




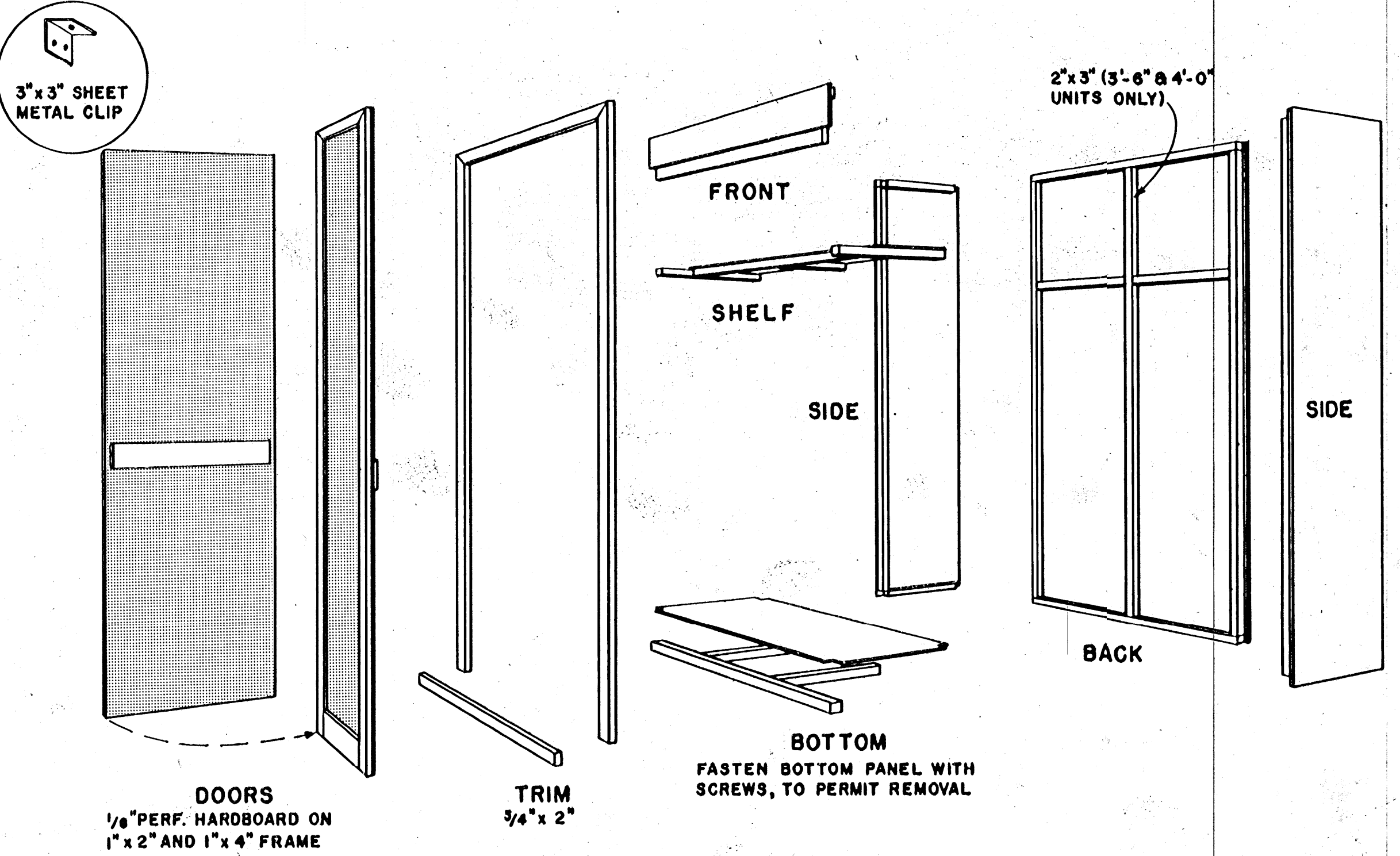
ELEVATION SECTION  
PARTITION



ELEVATION, CUT AWAY TO SHOW INTERIOR  
STORAGE PARTITION



PARTITION STORAGE PARTITION  
TYPICAL CROSS SECTIONS  
SCALE: 1" = 1'-0"



EXPLODED VIEW OF TYPICAL CLOSET UNIT  
SHOWING COMPONENTS READY FOR ASSEMBLY

THESE BEDROOM PARTITIONS ARE DESIGNED TO PERMIT FUTURE REARRANGEMENT OR REMOVAL. THE STORAGE PARTITION IS MADE UP OF INDIVIDUAL CLOSET UNITS WHICH ARE SUPPORTED ON CONTINUOUS 1"x4" BOARDS WHICH SERVE TO PROTECT THE FINISH FLOOR TILE. JOINTS AT THE FLOOR AND CEILING ARE COVERED BY TRIM. USE OF VERTICALLY GROOVED PLYWOOD OR HARDBOARD PANELS WILL AID IN CONCEALING THE JOINTS BETWEEN UNITS. ALL FRAMING IS 2"x2" EXCEPT AS NOTED.

CLOSET DOORS SHOULD HAVE MAGNETIC LATCHES AT TOP AND BOTTOM. PERFORATED HARDBOARD IS USED ON CLOSET DOORS FOR VENTILATION AND ON THE OTHER PARTITION FOR TEXTURE AND TO PERMIT HANGING LIGHT SHELVES, ETC., ON COMMERCIAL BRACKETS. CONSTRUCTION OF HEATER ENCLOSURE WILL DEPEND ON THE TYPE OF HEATING UNIT TO BE INSTALLED.

COOPERATIVE EXTENSION WORK IN  
AGRICULTURE AND HOME ECONOMICS  
STATE OF MISSISSIPPI  
MISSISSIPPI STATE UNIVERSITY  
AND  
UNITED STATES DEPARTMENT OF AGRICULTURE COOPERATING

**CABIN**

P CA '64 EX. 5968 SHEET 3 OF 3