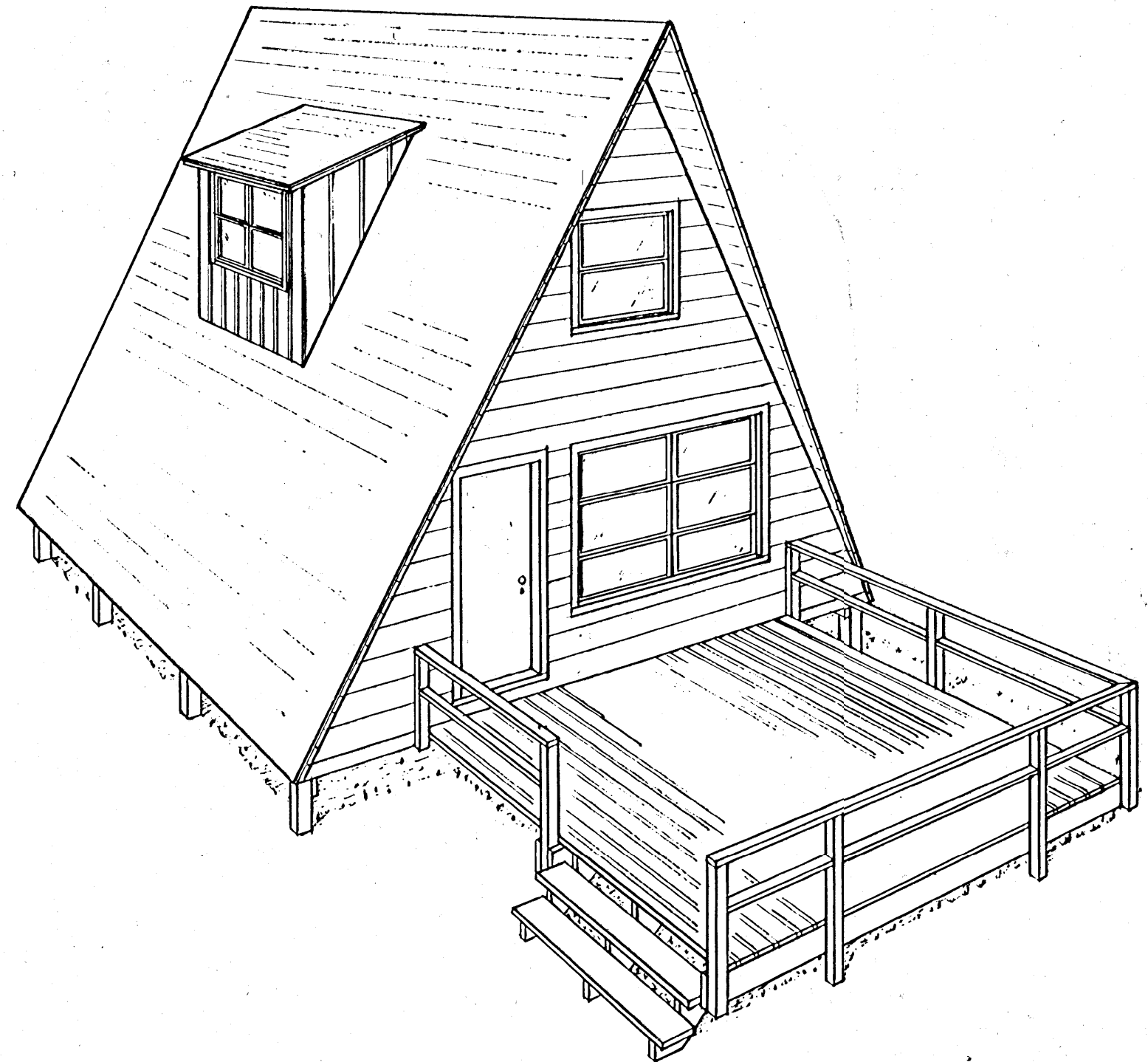
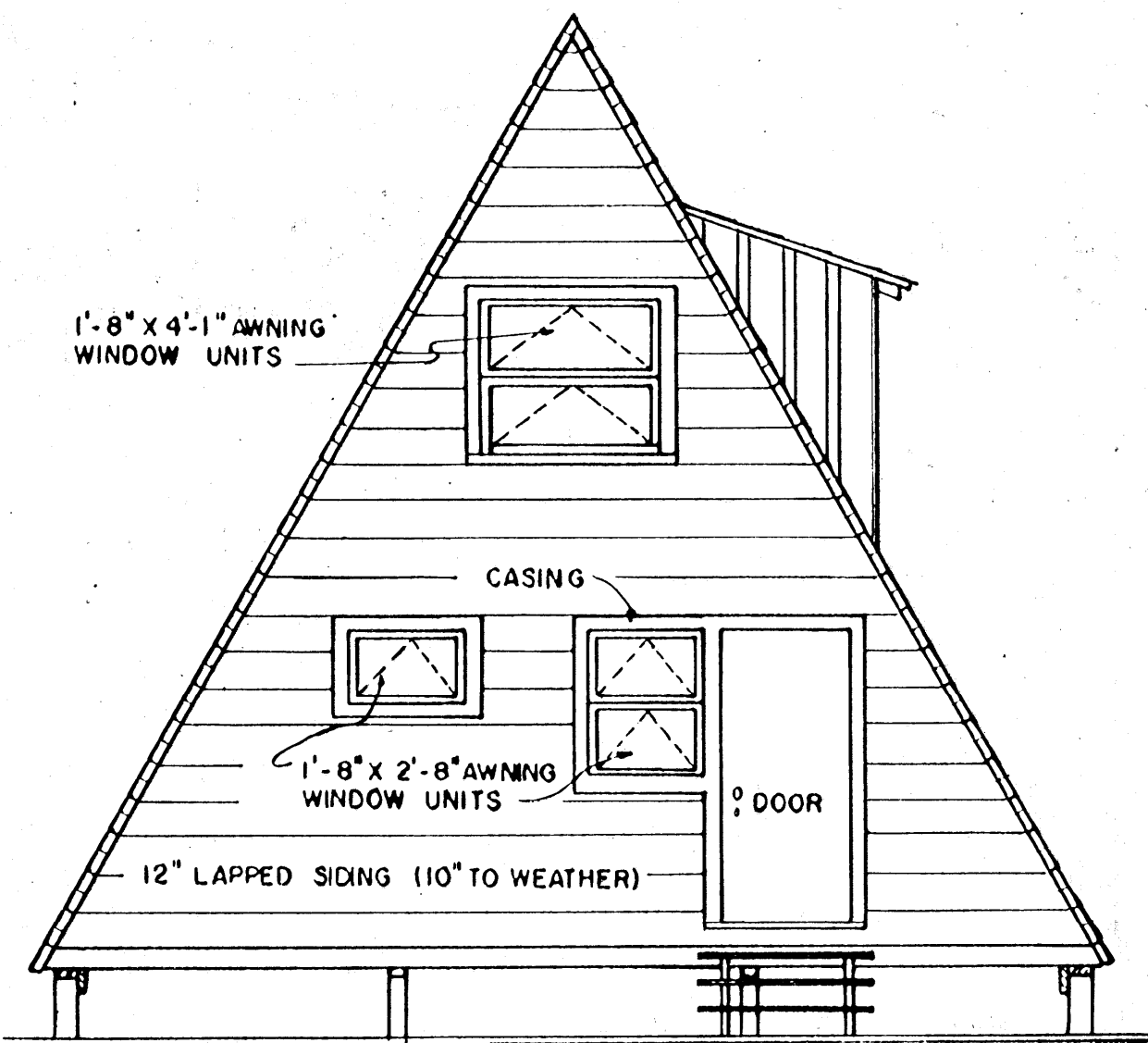


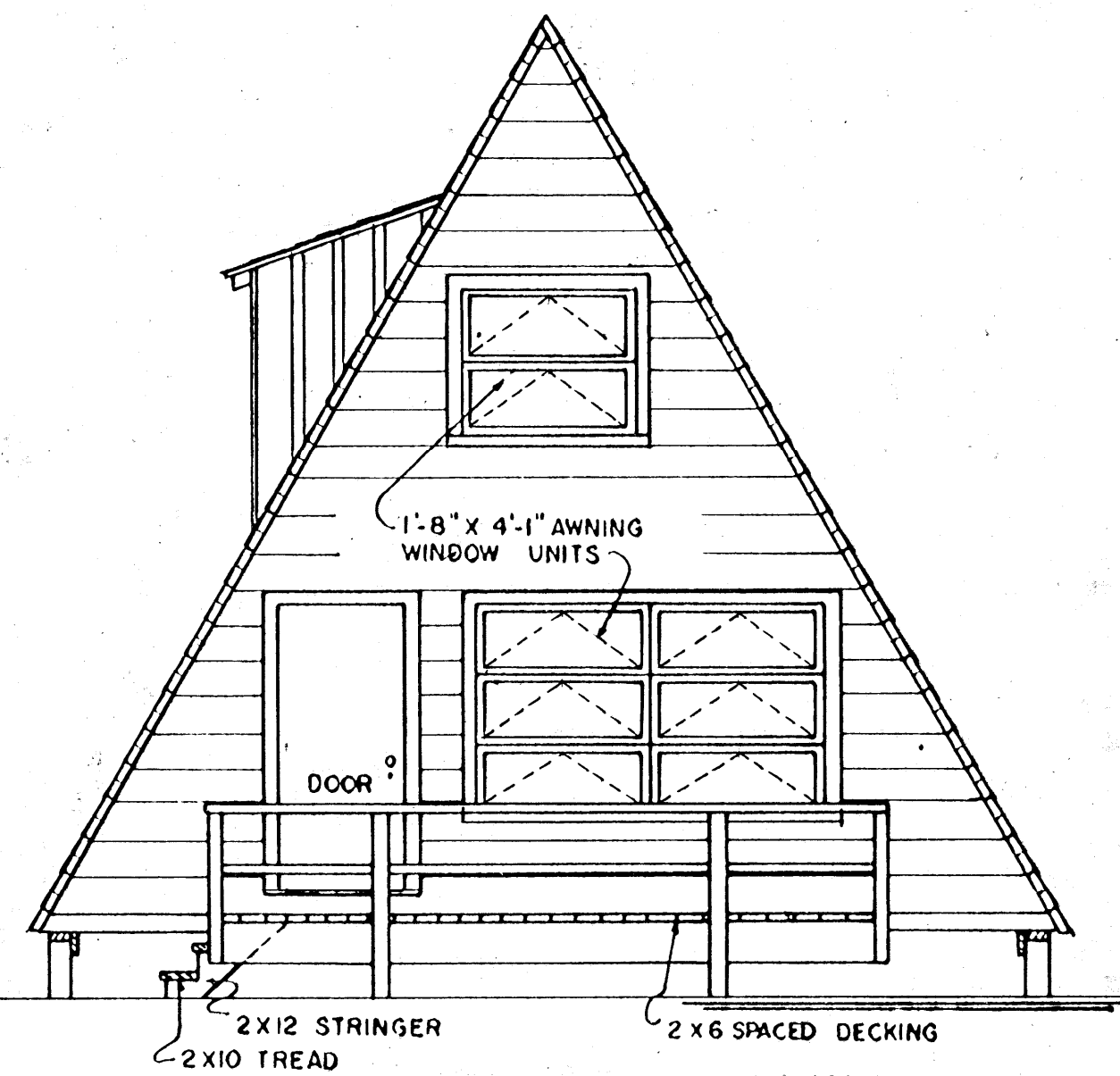
SIDE ELEVATION
SCALE 1/4" = 1'-0"



PERSPECTIVE



REAR ELEVATION
SCALE 1/4" = 1'-0"

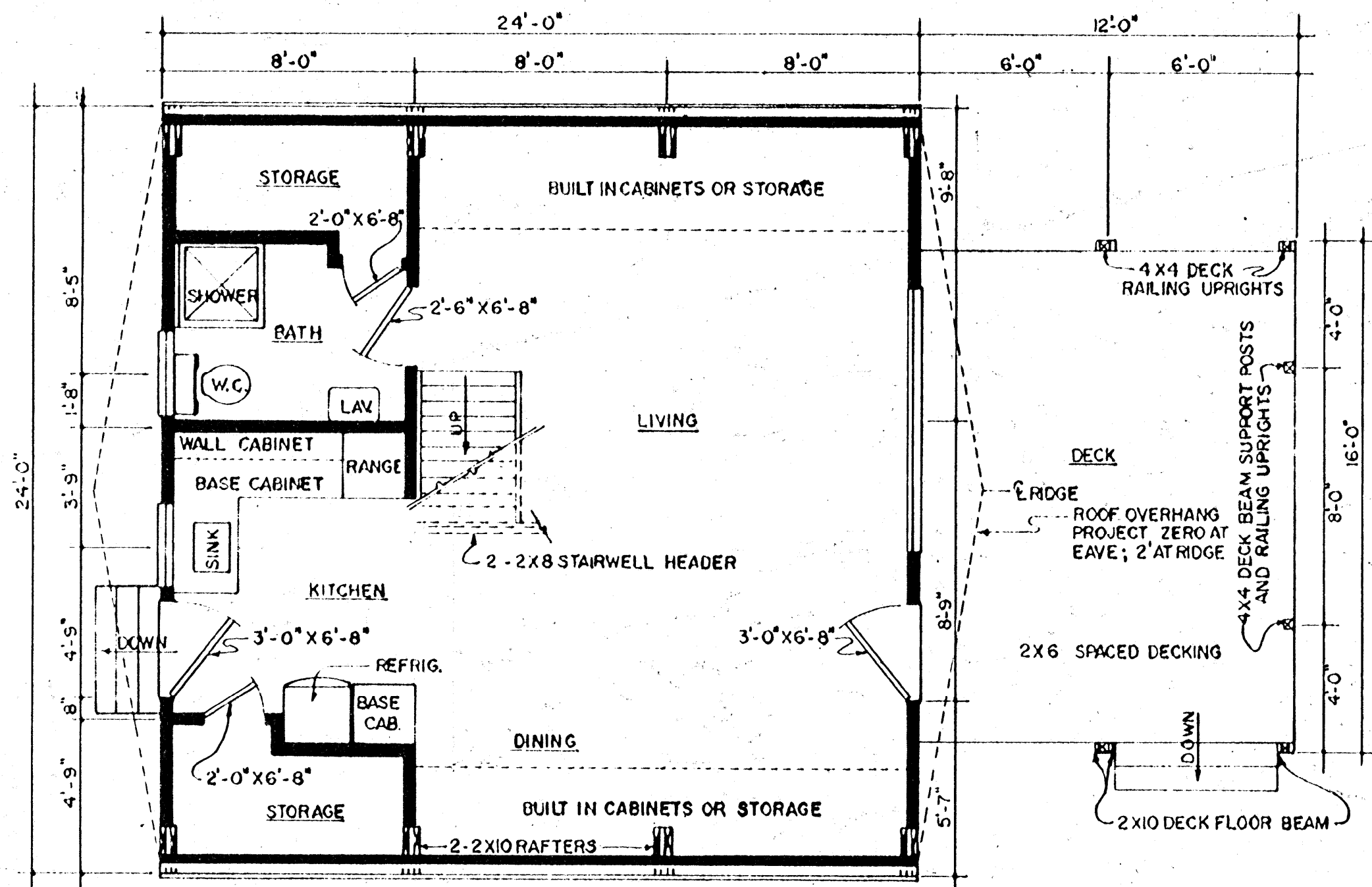


DECK-ENDELEVATION
SCALE 1/4" = 1'-0"

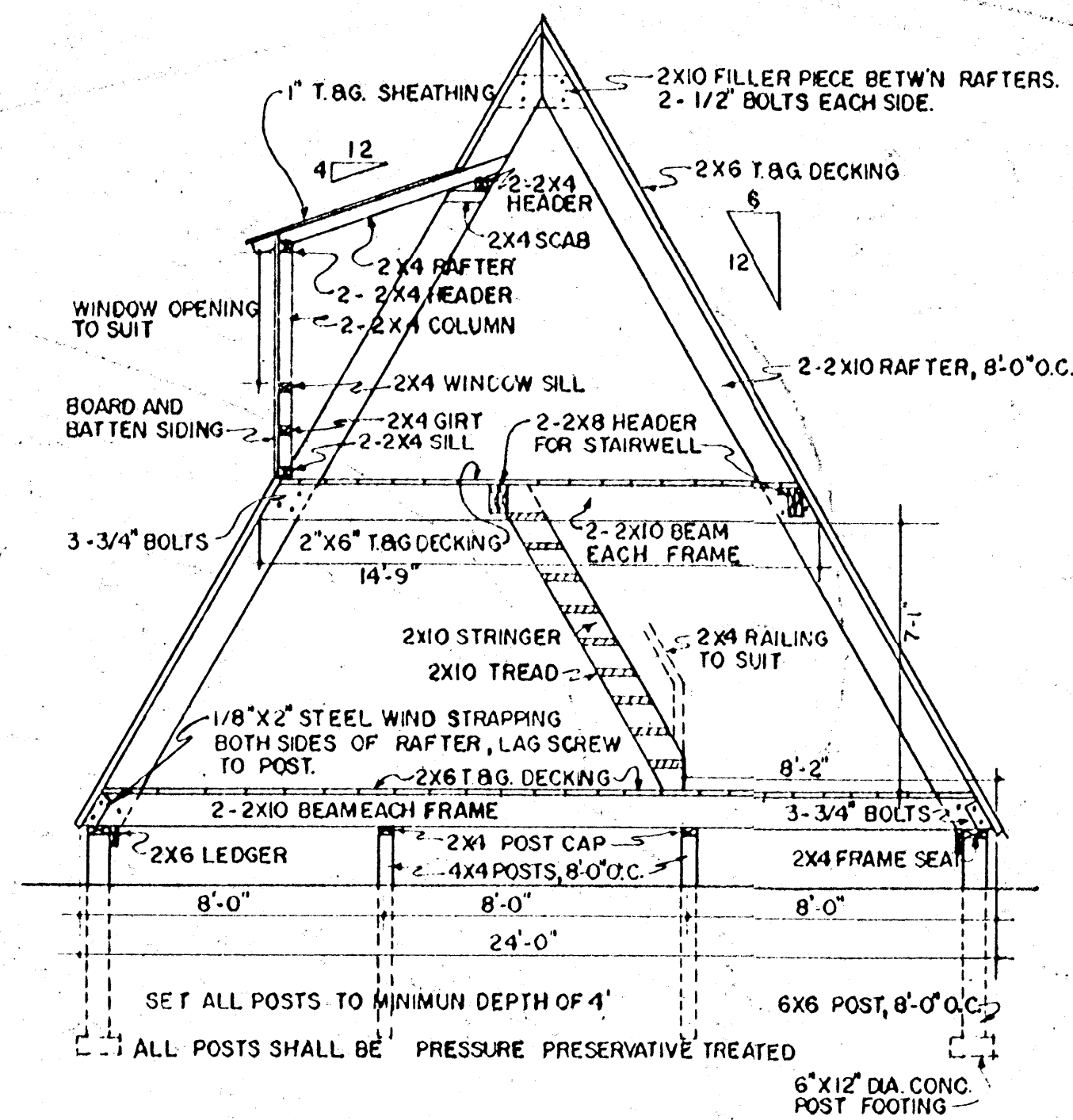
BASED ON UNIV. OF MASS. PLAN MC-4612
 COOPERATIVE EXTENSION WORK IN
 AGRICULTURE AND HOME ECONOMICS
 STATE OF MISSISSIPPI
 MISSISSIPPI STATE UNIVERSITY
 AND
 UNITED STATES DEPARTMENT OF AGRICULTURE COOPERATING

24'-0" A-FRAME CABIN

MASS. '66 EX. 6003 SHEET 1 OF 2



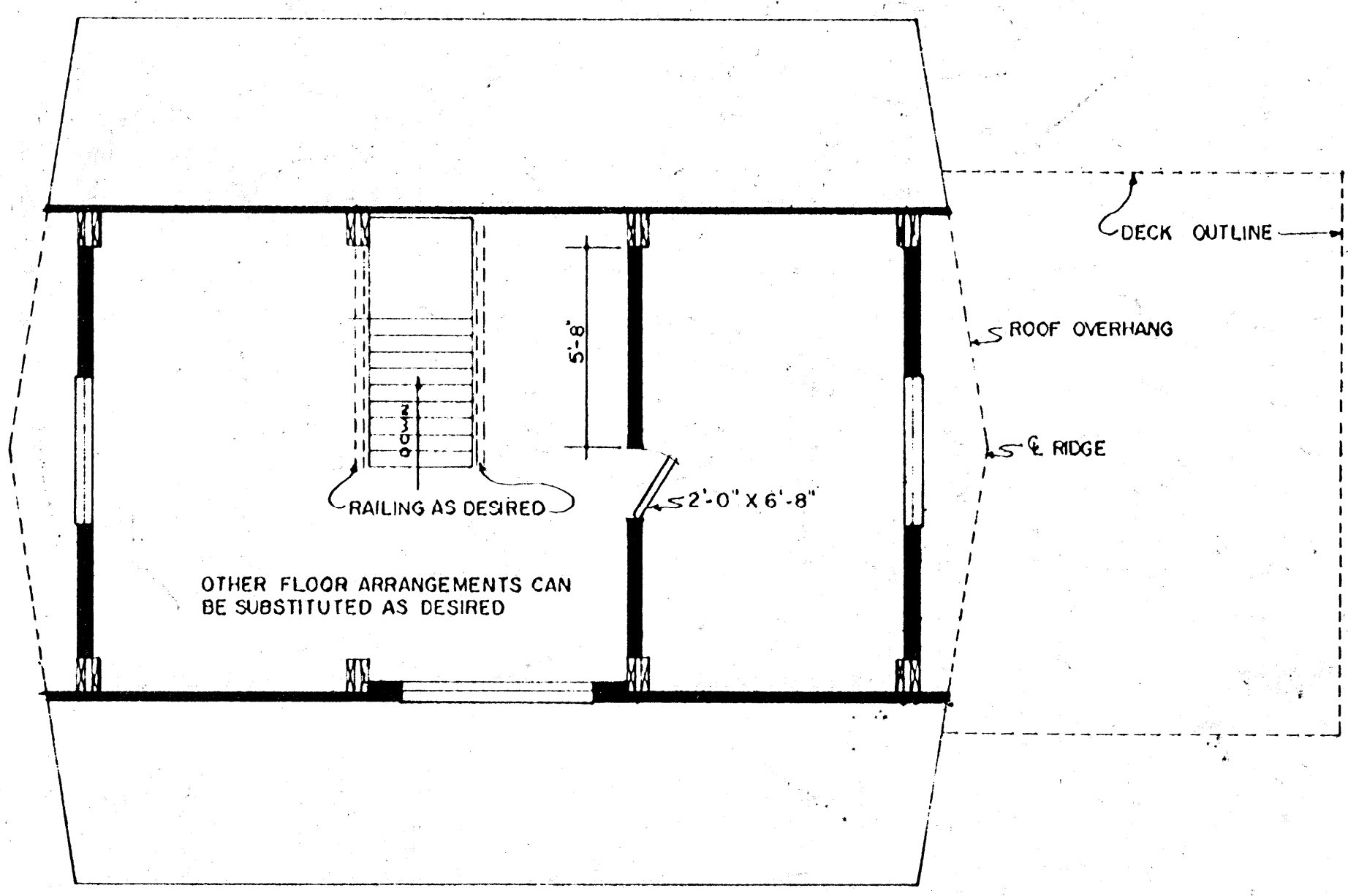
FLOOR PLAN
SCALE 1/4" = 1'-0"



CROSS SECTION
SCALE 1/4" = 1'-0"

NOTES:

1. DESIGN FLOOR LOAD = 30 PSF.
2. DESIGN FIBER STRESS IN BENDING = 1200 PSI
3. FLOOR MEMBER DEFLECTION LIMIT = $\frac{1}{360}$
4. FLOOR - DECKING JOINTS SHALL BE STAGGERED AS MUCH AS POSSIBLE.
5. RAFTERS AND FLOOR BEAMS ARE INTENDED TO BE 24' LONG IN ORDER TO FACILITATE CONSTRUCTION OF THE "A" FRAMES ON THE GROUND. IF SPLICES ARE NECESSARY, LOCATE RAFTER JOINTS ABOVE 2ND FLOOR LEVEL AND FLOOR - BEAM JOINTS (STAGGER JOINTS IN TWO FLOOR BEAMS) ABOVE THE INTERIOR SUPPORT POSTS
6. ALL STRUCTURAL FRAMING SHALL BE ROUGH LUMBER
7. LAPPED ROUGH 1" BOARDS (NOMINAL SIZE) IS SUGGESTED FOR END-WALL SIDING OTHER MATERIALS OR METHODS MAY BE SUBSTITUTED IF DESIRED.
8. ALL AWNING WINDOWS UNIT SIZE ARE APPROXIMATE. OTHER WINDOW SIZES AND / OR STYLES MAY BE SUBSTITUTED AS DESIRED.
9. INTERIOR FINISH IS LEFT TO BUILDER'S DISCRETION.



2nd FLOOR PLAN
SCALE 1/4" = 1'-0"

COOPERATIVE EXTENSION WORK IN
AGRICULTURE AND HOME ECONOMICS
STATE OF MISSISSIPPI
MISSISSIPPI STATE UNIVERSITY
AND
UNITED STATES DEPARTMENT OF AGRICULTURE COOPERATING

24'-0" A-FRAME CABIN

MASS. '66 | EX. 6003 | SHEET 2 OF 2