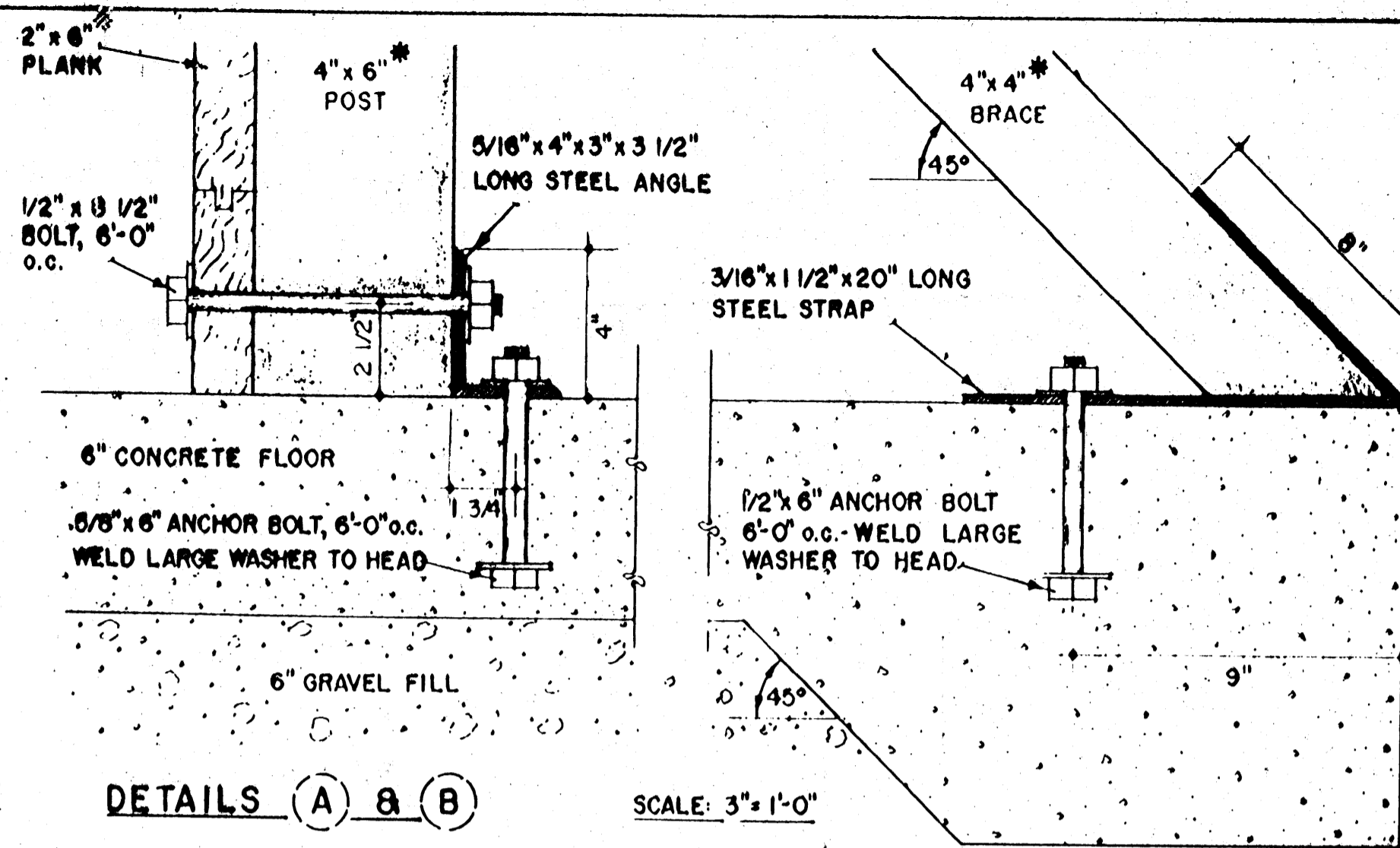
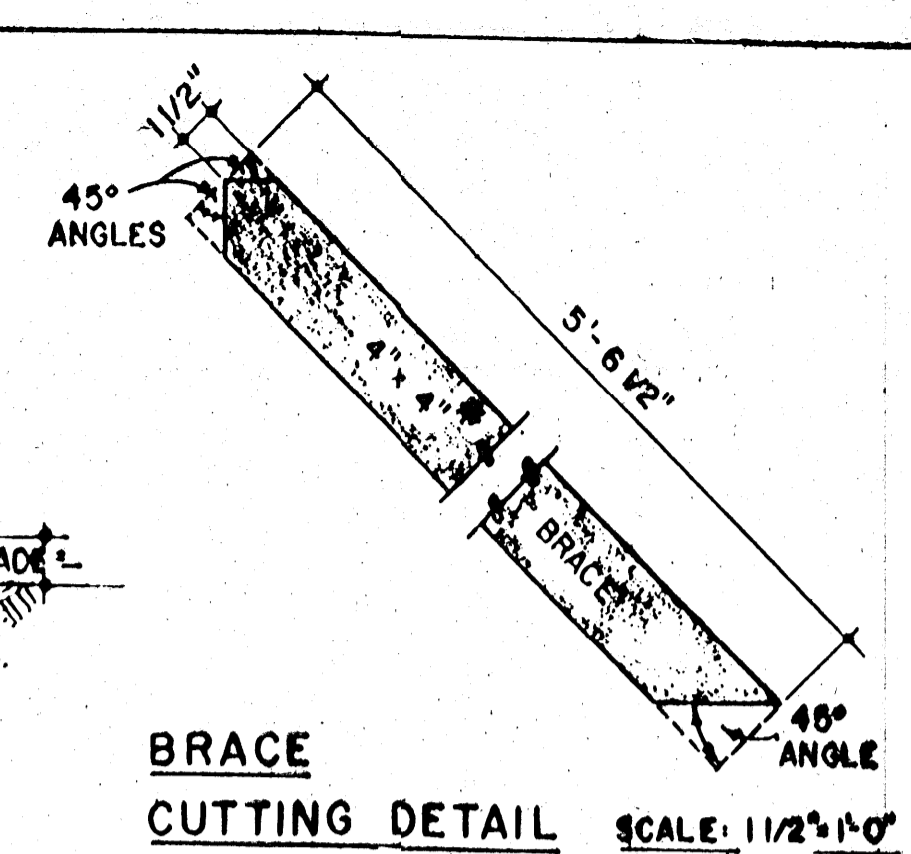


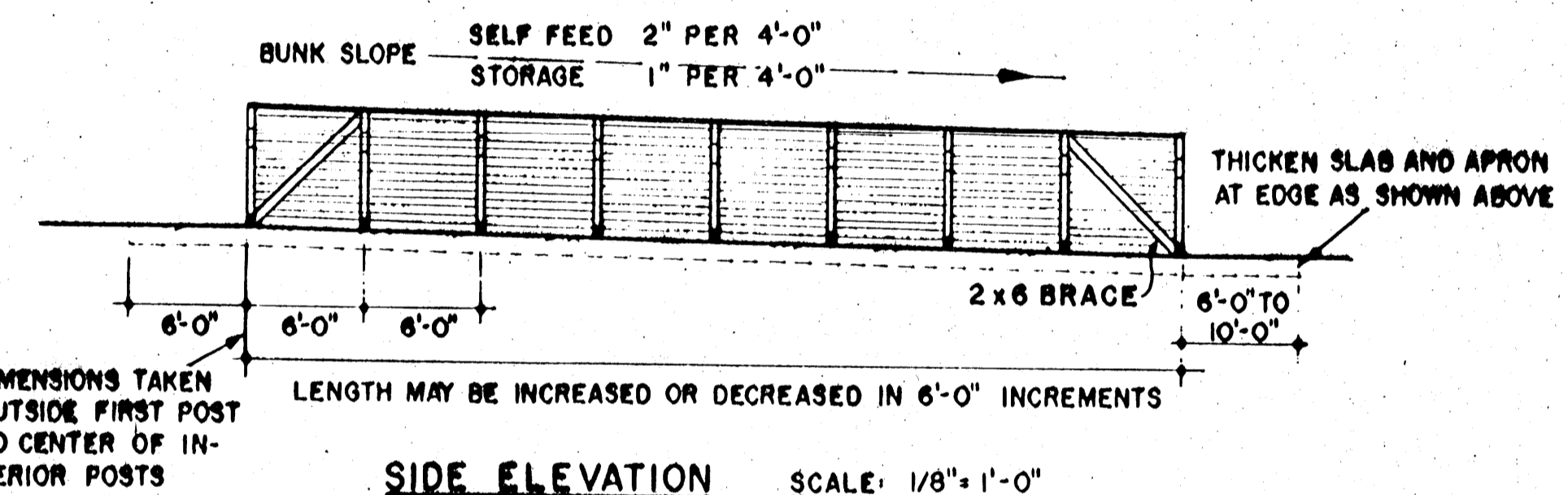
WALL SECTION SCALE: 3/4" = 1'-0"



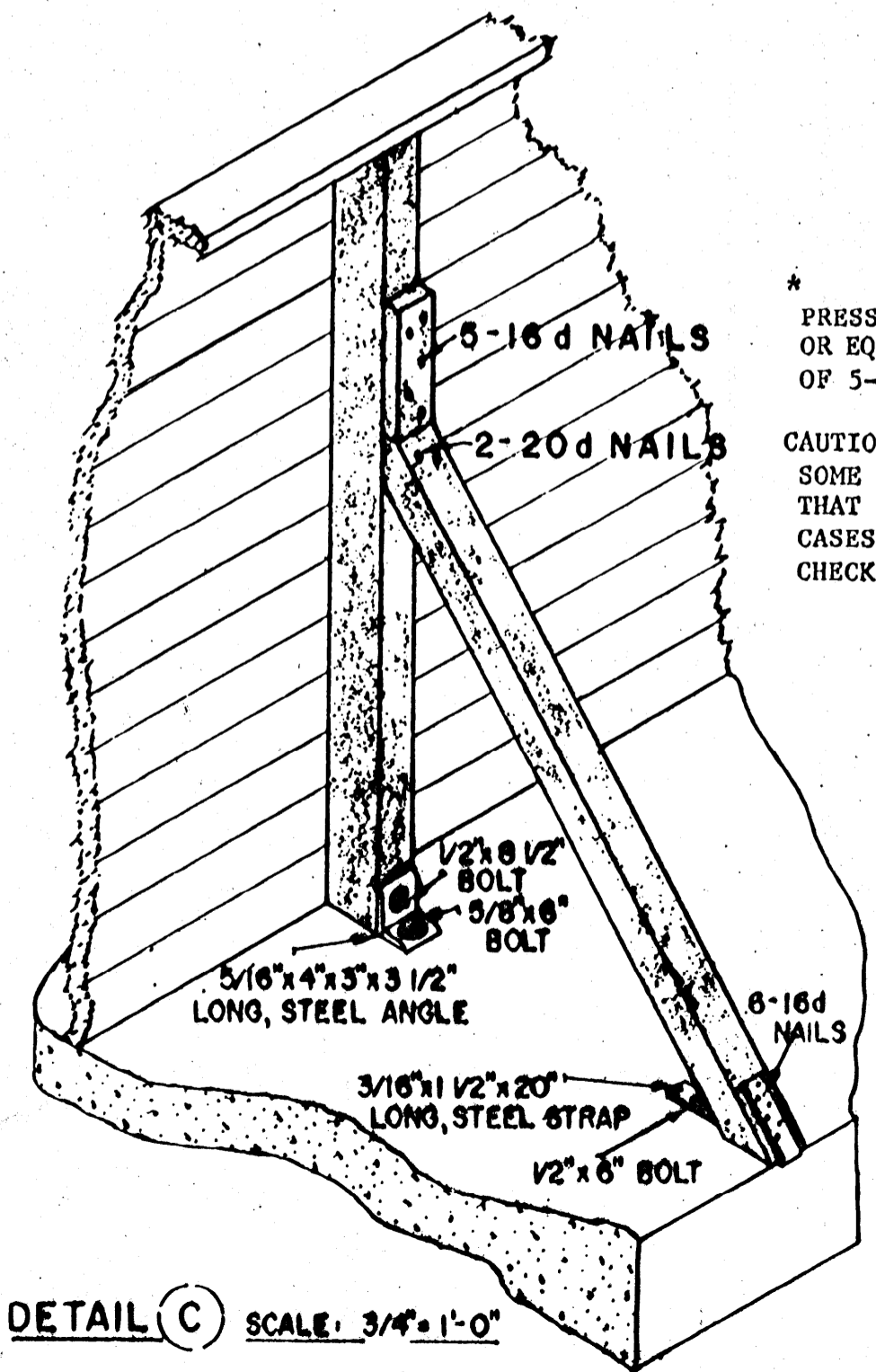
DETAILS A & B SCALE: 3" = 1'-0"



BRACE CUTTING DETAIL SCALE: 1 1/2" = 1'-0"



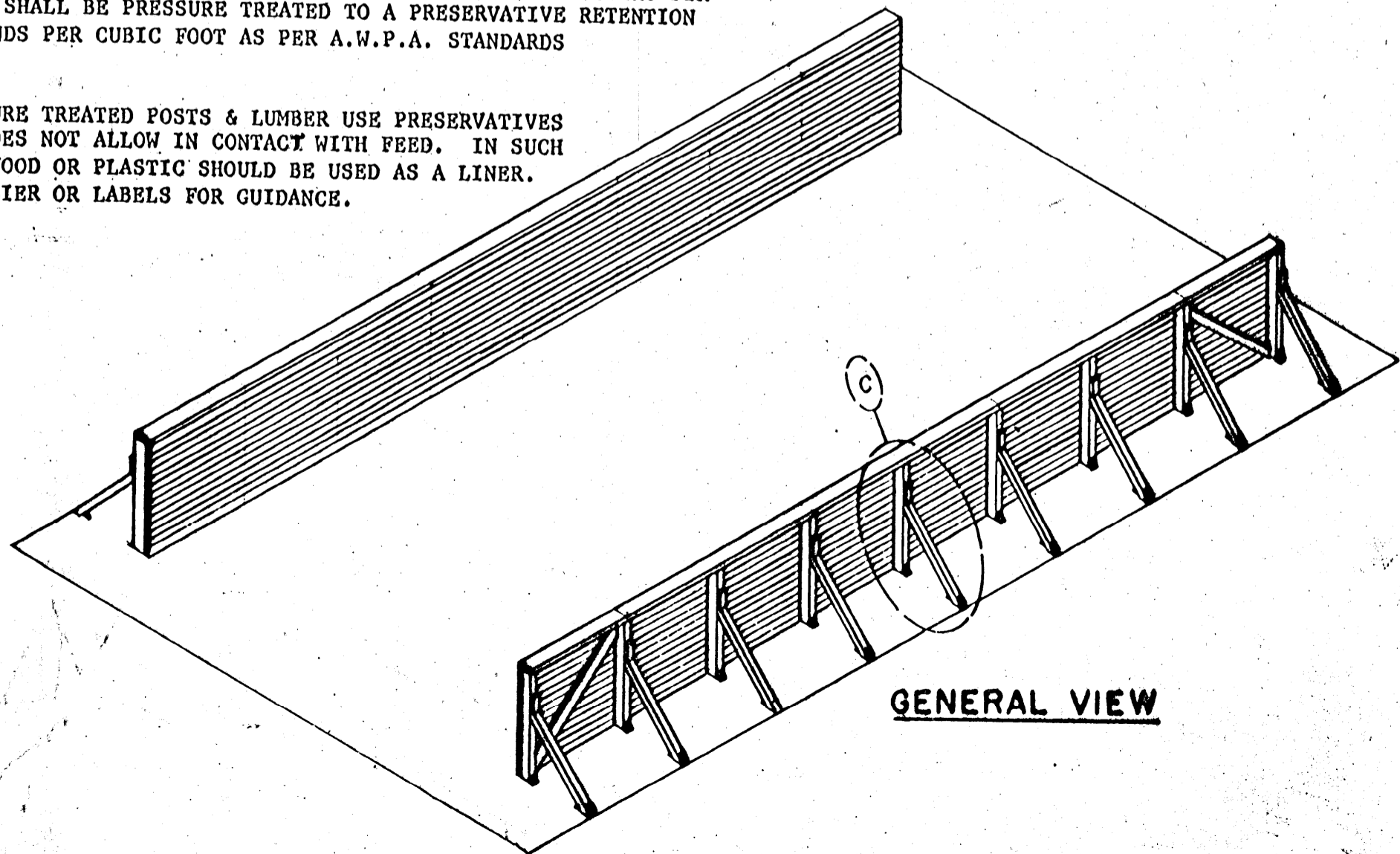
SIDE ELEVATION SCALE: 1/8" = 1'-0"



DETAIL C SCALE: 3/4" = 1'-0"

\* PRESSURE TREATED MATERIAL SHALL BE CONSTRUCTION GRADE DOUGLAS FIR OR EQUAL & SHALL BE PRESSURE TREATED TO A PRESERVATIVE RETENTION OF 5-7 POUNDS PER CUBIC FOOT AS PER A.W.P.A. STANDARDS

CAUTION: SOME PRESSURE TREATED POSTS & LUMBER USE PRESERVATIVES THAT EPA DOES NOT ALLOW IN CONTACT WITH FEED. IN SUCH CASES, PLYWOOD OR PLASTIC SHOULD BE USED AS A LINER. CHECK SUPPLIER OR LABELS FOR GUIDANCE.



GENERAL VIEW

NOTES

GENERAL

1. SITE LOCATION TO BE WELL DRAINED.
2. IF SELF-FEEDING IS DESIRED, ORDER PLAN 5872, 'SELF-FEEDING FENCES'
3. IF SOLID END WALL IS DESIRED, USE 2"x6" PLANK WALL BRACED 6'-0" AS SHOWN ON THIS DRAWING.
4. USE GALVANIZED OR CADMIUM PLATED 10d NAILS TO FASTEN PLANK TO POSTS.

LUMBER

1. USE "STANDARD" GRADE DOUGLAS FIR OR STRESS GRADED LUMBER WITH A MINIMUM FIBER STRESS OF 1200 p.s.i.

CONCRETE

1. USE 3000 p.s.i. AIR ENTRAINED MIX CONTAINING 6% AIR.
2. SLOPE FLOOR AS INDICATED ON THE SIDE ELEVATION.

SILO CAPACITIES

WIDTH (FEET)	LENGTH (FEET)	CAPACITY (TONS)	(TONS PER EA. ADDITIONAL 4')
12	36	55	6.7
16	48	106	9.4
20	60	175	12.3
24	72	265	15.4
28	84	378	18.7
32	96	516	22.8
36	108	680	25.8
40	120	936	32.4

CAPACITIES SHOWN ARE APPROX & ARE BASED ON A SILAGE WEIGHT OF 40 LBS. PER CU FT.

COOPERATIVE EXTENSION SERVICE  
 AGRICULTURE AND HOME ECONOMICS

AND  
 UNITED STATES DEPARTMENT OF AGRICULTURE COOPERATING

**BRACED WALL SILO**

CONN. '67 EX. 6021 SHEET 1 OF 1

REVISED '88