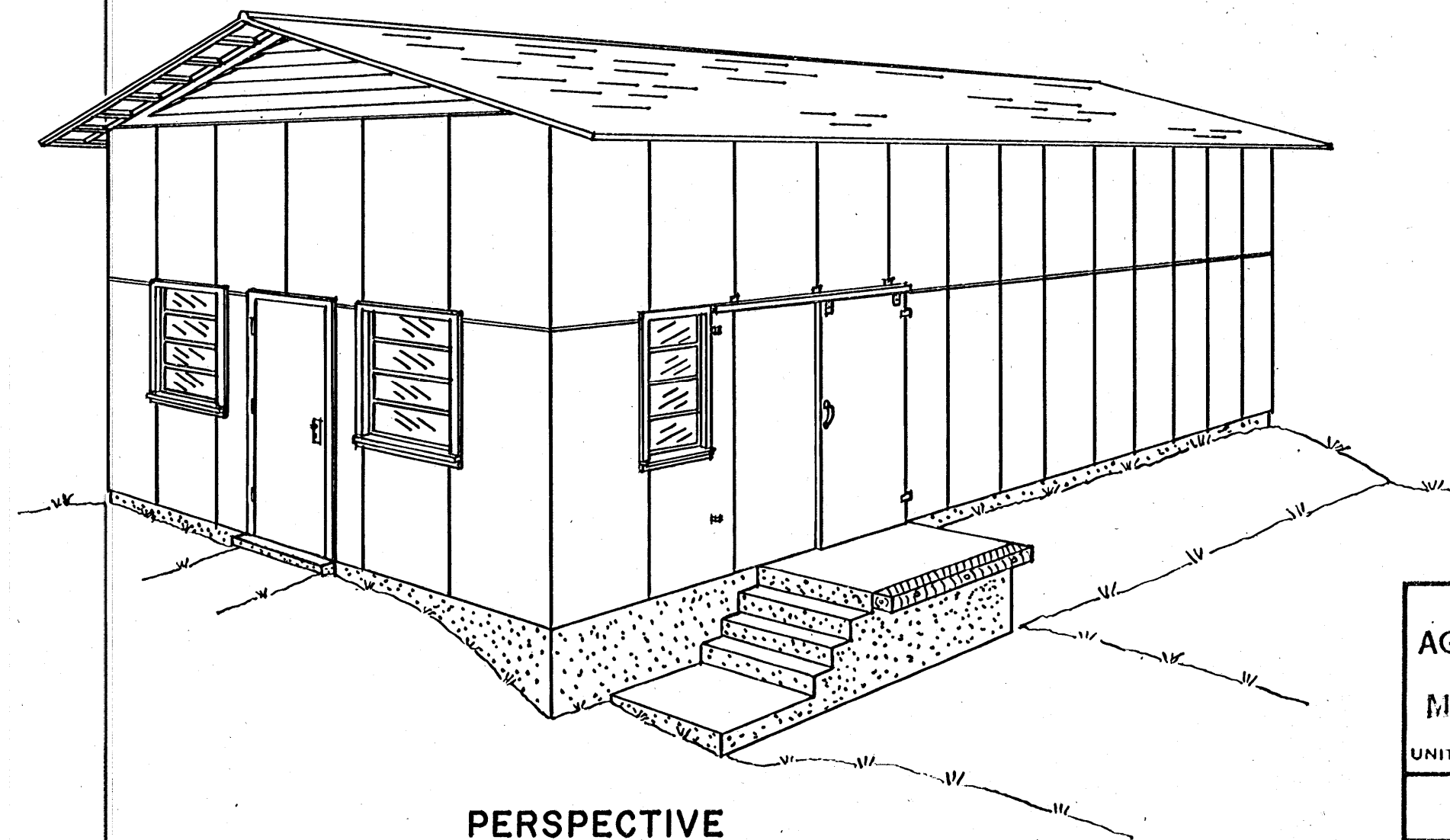


FLOOR PLAN
SCALE: 1/4" = 1'-0"

NOTE:
IF THE NATURAL GRADE DOES NOT ALLOW SUFFICIENT DOCK HEIGHT, PROVIDE A PIT RAMP WITH EITHER NATURAL TILE DRAINAGE OR A DRYWELL. INSTALL STEPS WHERE NEEDED.

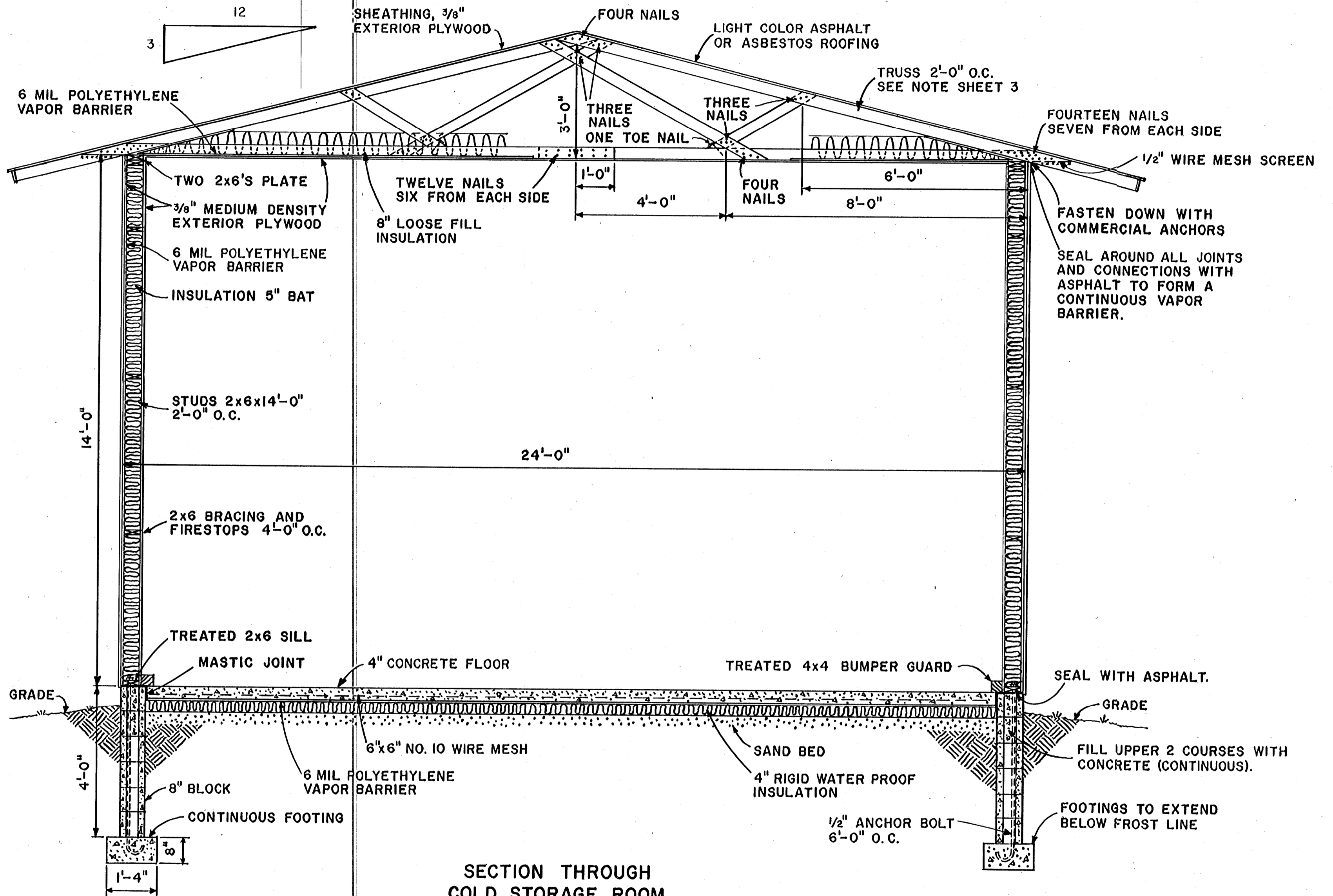


CAPACITY: 3000 BUSHELS

COOPERATIVE EXTENSION WORK IN
AGRICULTURE AND HOME ECONOMICS
STATE OF MISSISSIPPI
MISSISSIPPI STATE UNIVERSITY
AND
UNITED STATES DEPARTMENT OF AGRICULTURE COOPERATING

STORAGE BUILDING
FOR FRUIT

USDA '72	6145	SHEET 1 OF 3
----------	------	--------------



SECTION THROUGH COLD STORAGE ROOM
SCALE: 1/2" = 1'-0"

COOPERATIVE EXTENSION WORK IN
 AGRICULTURE AND HOME ECONOMICS
 STATE OF MISSISSIPPI
 MISSISSIPPI STATE UNIVERSITY
 AND
 UNITED STATES DEPARTMENT OF AGRICULTURE COOPERATING

STORAGE BUILDING FOR FRUIT

USDA '72	6145	SHEET 2 OF 3
----------	------	--------------

NOTES:

TRUSS:

THIS TRUSS IS DESIGNED TO SUPPORT LOADS UP TO 70 LBS. PER FOOT OF SPAN, INCLUDING THE WEIGHT OF THE ROOF.

ALL LUMBER SHALL BE STRESS GRADED TO PROVIDE 1500 P.S.I. FIBER STRESS IN BENDING, AND 1350 P.S.I. IN COMPRESSION.

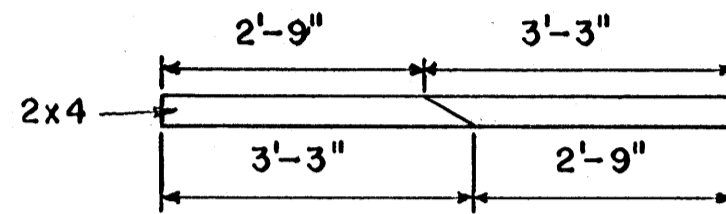
MATERIALS FOR ONE TRUSS:

TOP CHORD	2 PCS.	2x4x16'-0"
BOTTOM CHORD	2 PCS.	2x4x14'-0"
LONG WEBS	1 PC.	2x4x14'-0"
SHORT WEBS	1 PC.	2x4x6'-0"
NAILS	2 1/4 LBS.	20d COMMON

ALL PROJECTING NAILS ARE TO BE CLINCHED.

NOTES:

COLD STORAGE 24'-0" x 24'-0" x 14'-0" CEILING HEIGHT.
 PACKING SHED 18'-0" x 24'-0" x 14'-0"
 SALES AREA 10'-0" x 24'-0" x 14'-0"
 ROOF LINE CONTINUOUS OVER 52'-0" x 24'-0" TOTAL AREA.
 BLDG. DESIGNED FOR 30 P.S.F. SNOW LOAD AND 15 P.S.F. WIND LOAD.
 LOADING RATE 300 BUSHELS PER DAY.



CUTTING DIAGRAM FOR SHORT WEB

(ALL OTHER CUTS MADE AFTER THE TRUSS IS ASSEMBLED)

SCALE: 1/2" = 1'-0"

NOTES:

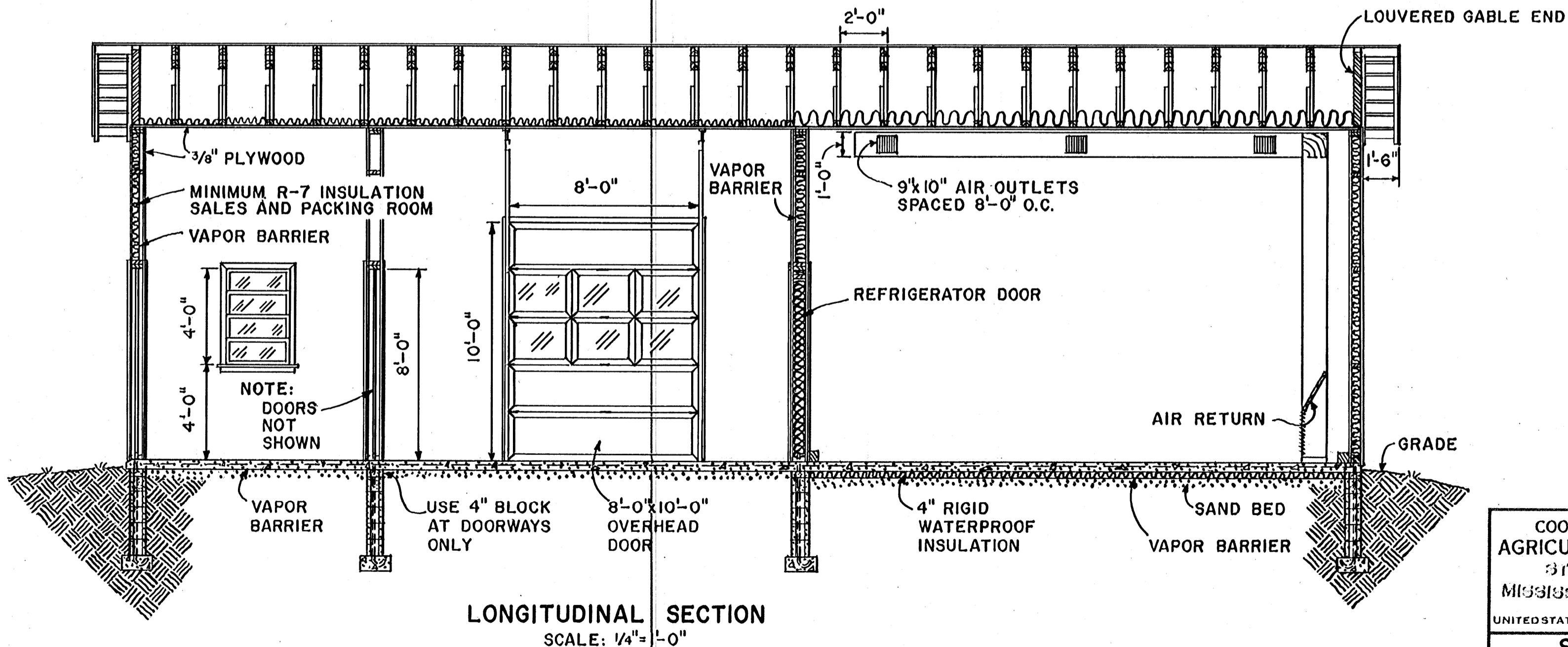
TOTAL HEAT LOSS:

CONDUCTION	4,629 BTU/HR
FIELD HEAT	25,925 BTU/HR
RESPIRATION	3,136 BTU/HR
INCIDENTAL	3,369 BTU/HR
TOTAL	37,059 BTU/HR

12,000 BTU/HR = 1 TON OF REFRIGERANT

3.08 TONS COOLING REQUIRED

SPECIFY A 3 1/2 TON UNIT TO OPERATE AT 32° F. WITH 85 TO 90% RELATIVE HUMIDITY AND AN AIR FLOW RATE OF 3,000 C.F.M. AT VELOCITIES OF 800 FEET PER MINUTE AT DUCT EXITS.



LONGITUDINAL SECTION

SCALE: 1/4" = 1'-0"

COOPERATIVE EXTENSION WORK IN AGRICULTURE AND HOME ECONOMICS
 STATE OF MISSISSIPPI
 MISSISSIPPI STATE UNIVERSITY
 AND
 UNITED STATES DEPARTMENT OF AGRICULTURE COOPERATING

STORAGE BUILDING FOR FRUIT

USDA '72 6145 SHEET 3 OF 3