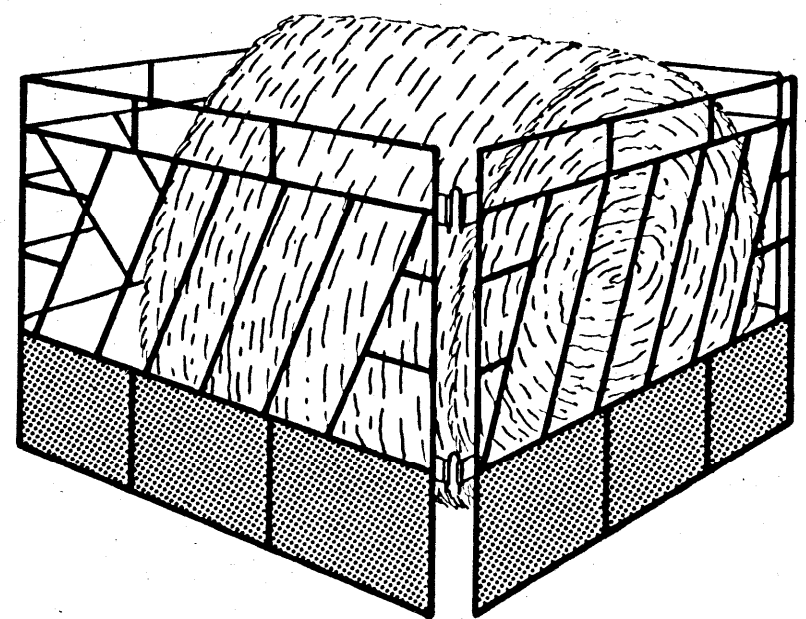
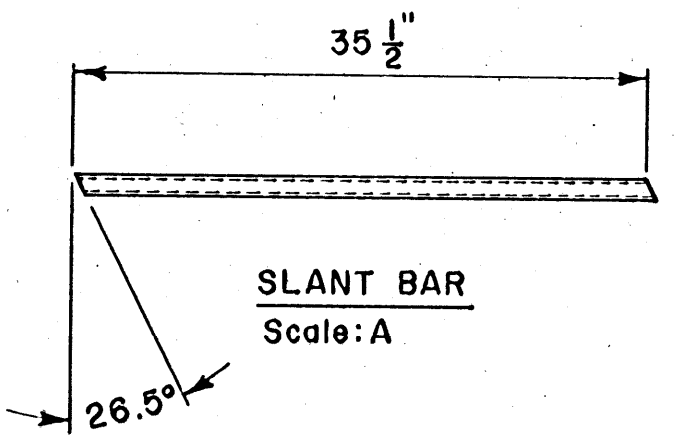


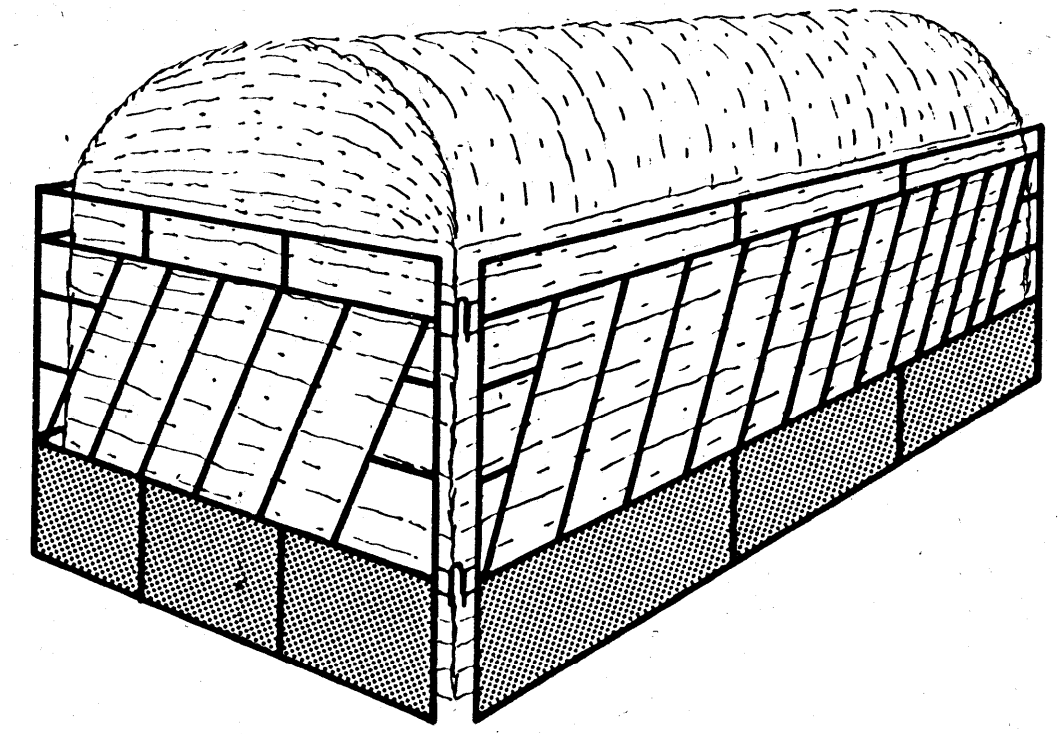
DETAIL "A"  
Scale: B



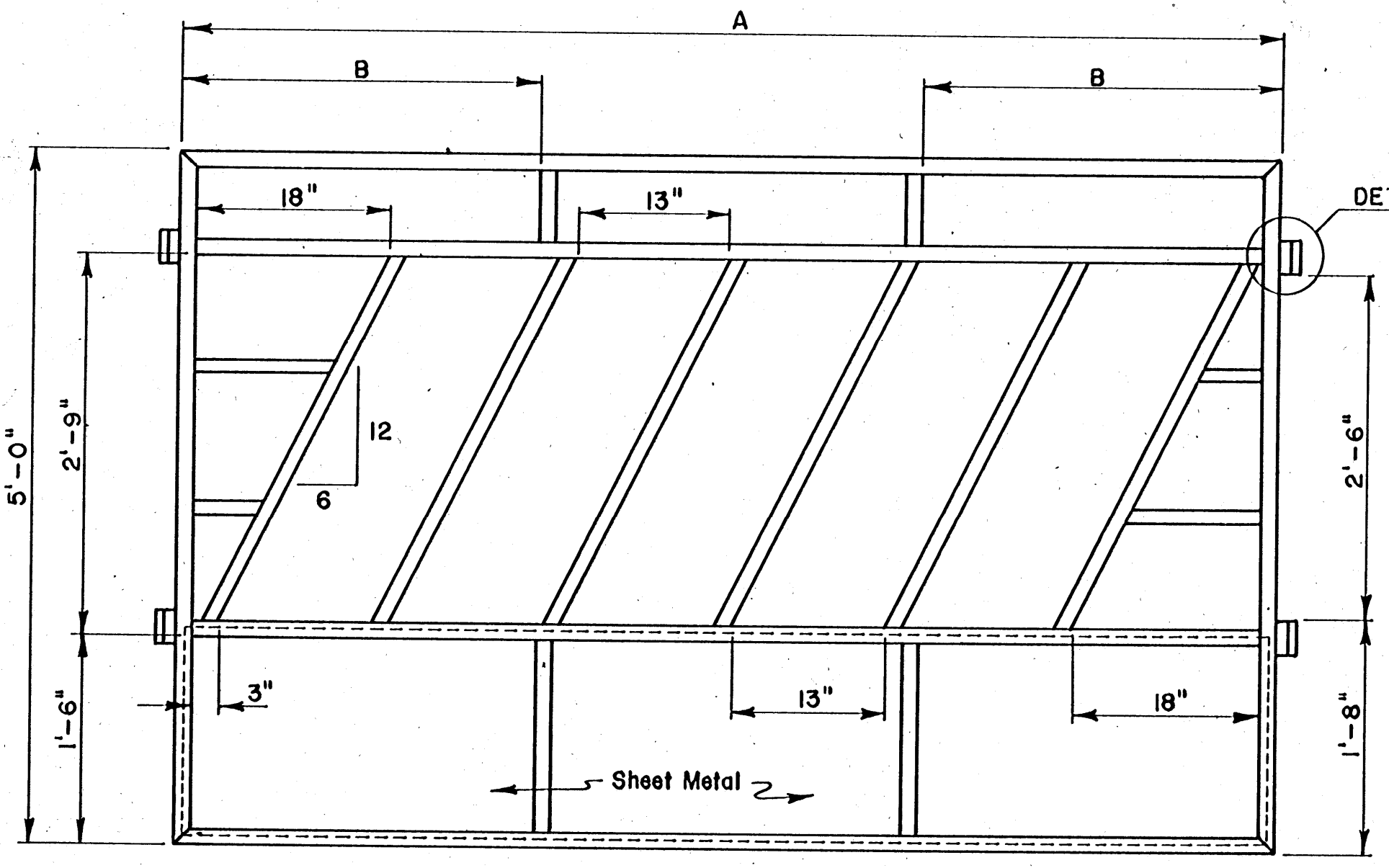
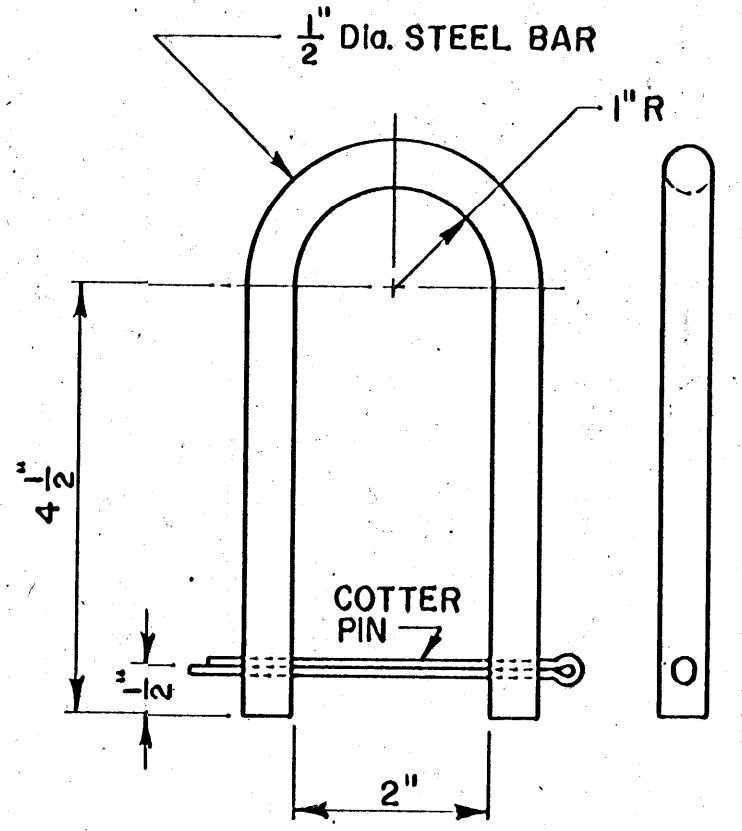
PERSPECTIVE



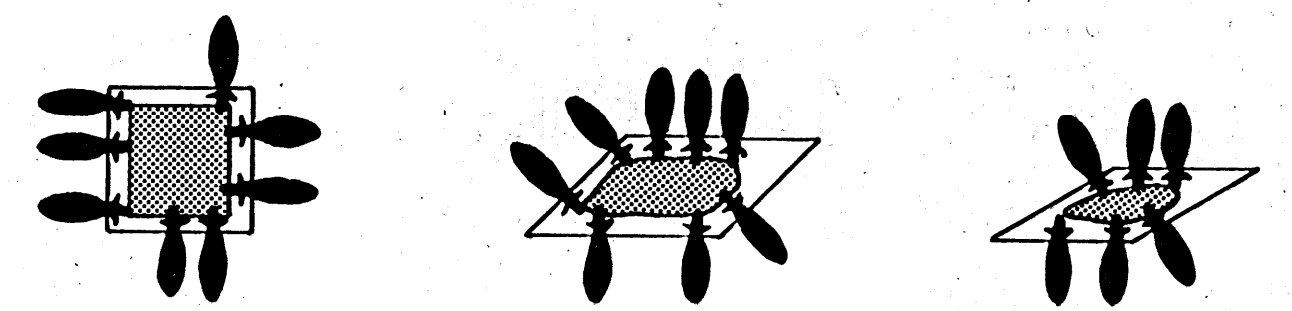
Bill Of Material (Per Panel)	8'	10'	12'	14'	16'
$1\frac{1}{4}$ " x 16 Ga. (.065") Square Tubing	68'	83'	98'	113'	120'
18" x 20 Ga. (.0359") Sheet Steel	7'-11"	10'-1"	12'-3"	14'-5"	15'-6"
$\frac{1}{4}$ " x 1" Steel Bar	12"	12"	12"	12"	12"
$\frac{1}{2}$ " Dia. Pipe	12"	12"	12"	12"	12"
$\frac{1}{2}$ " Dia. Steel Bar	2'-2"	2'-2"	2'-2"	2'-2"	2'-2"
APPROX. WEIGHT PER PANEL, Lbs.	93	113	134	155	164
Dimension					
A	8'-0"	10'-2"	12'-4"	14'-6"	15'-7"
B	2'-6"	3'-4"	4'-0"	4'-10"	5'-2"



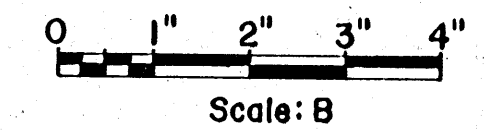
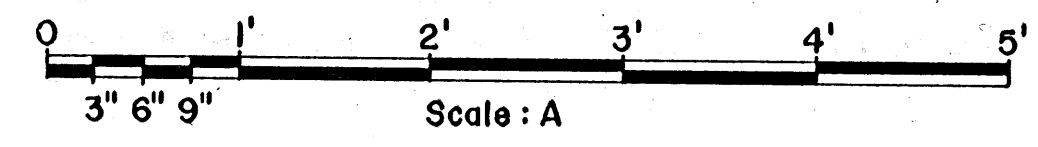
PERSPECTIVE



DETAIL "A"



Pinned Corner Connections Allow Panels To Collapse, Thus Providing Complete Hay Cleanup.



BASED ON: OKLA. STATE UNIV.  
PLAN NO. OK-724-28

NOTE:  
 $1\frac{1}{2}$ " Dia. x 16 Ga. (.065") Round  
Tubing May Be Substituted  
For The Square Tubing

COOPERATIVE EXTENSION WORK IN  
AGRICULTURE AND HOME ECONOMICS  
STATE OF MISSISSIPPI  
MISSISSIPPI STATE UNIVERSITY  
AND  
UNITED STATES DEPARTMENT OF AGRICULTURE COOPERATING

**SLANT BAR FEEDER PANELS**

OK.	'76	6242	SHEET 1 OF 1
-----	-----	------	--------------