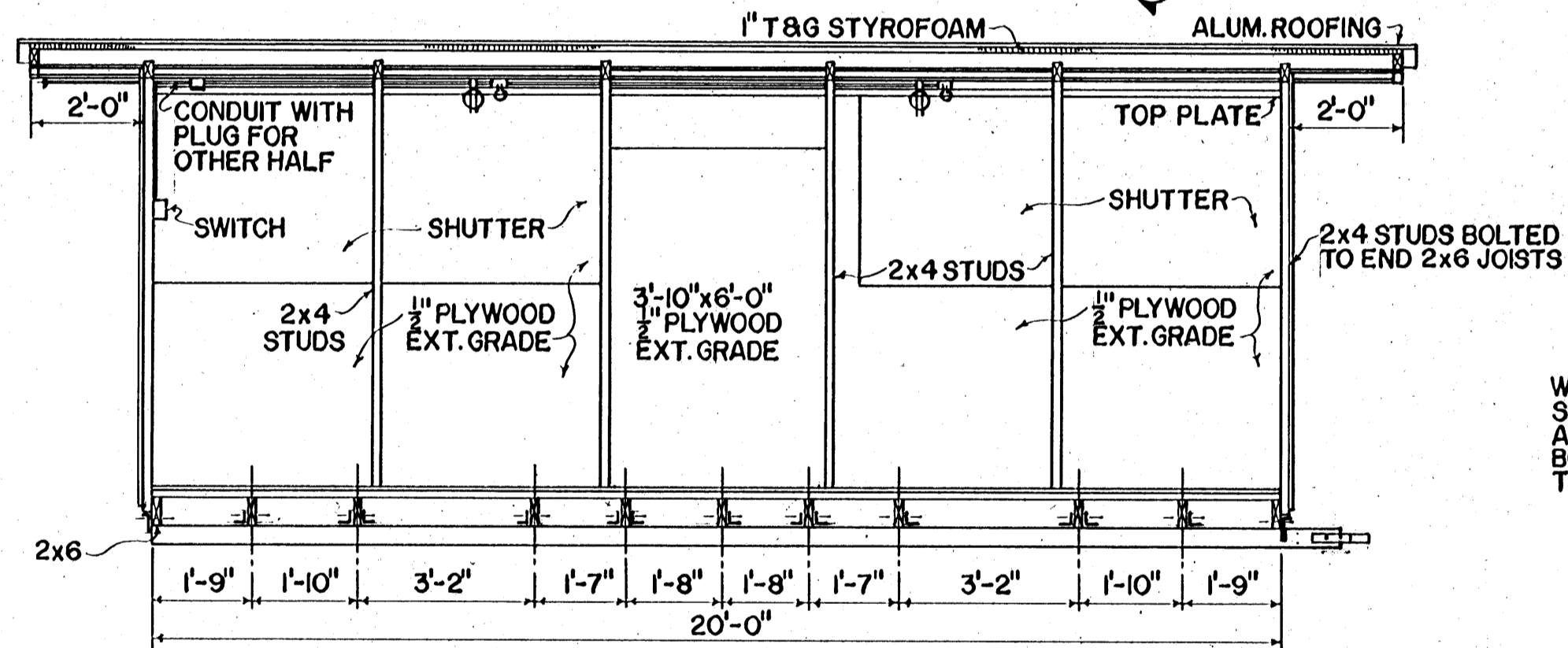
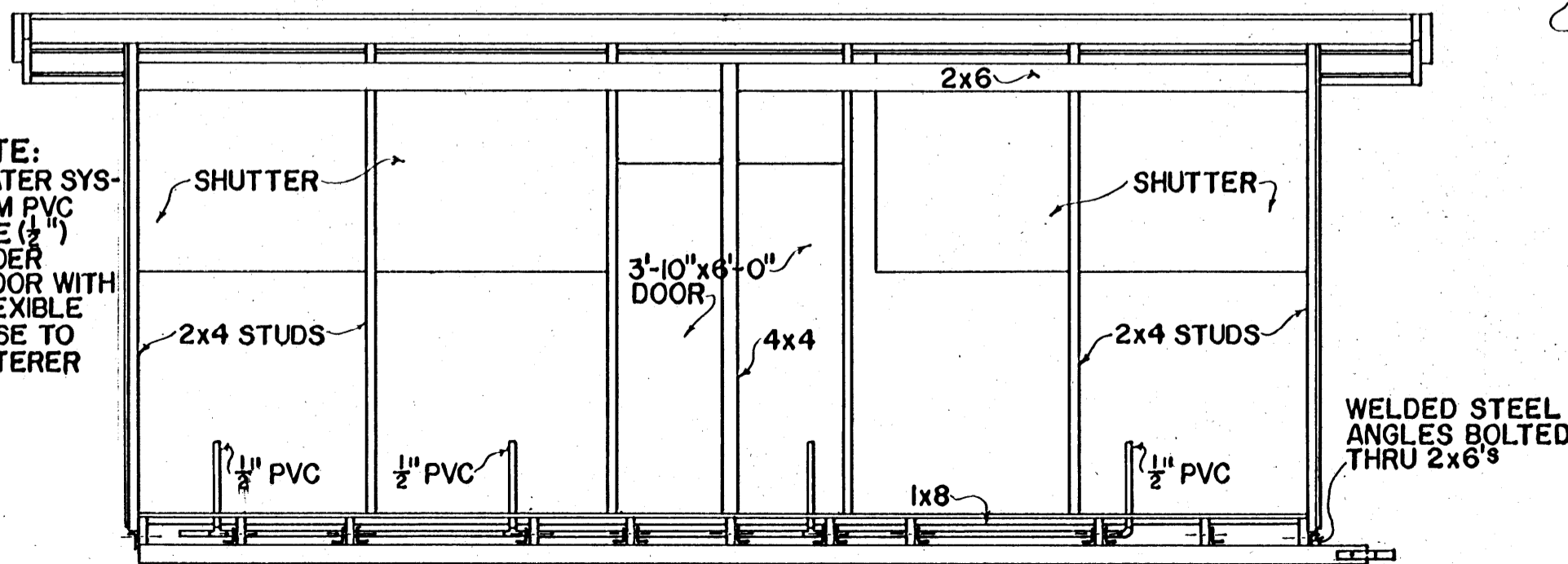


FLOOR PLAN



SECTION A-A

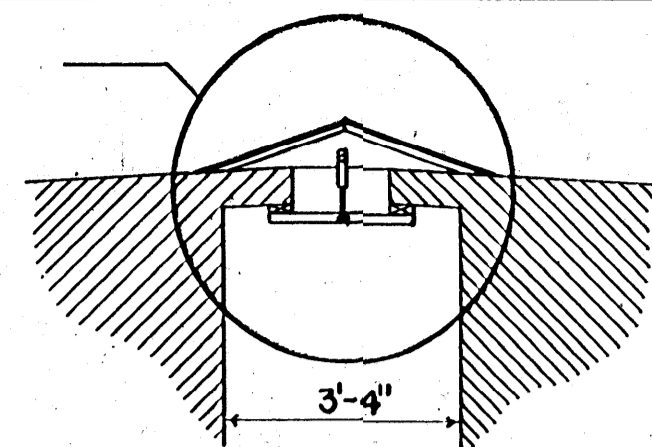
NOTE: WATER SYSTEM PVC PIPE (1/2") UNDER FLOOR WITH FLEXIBLE HOSE TO WATERER



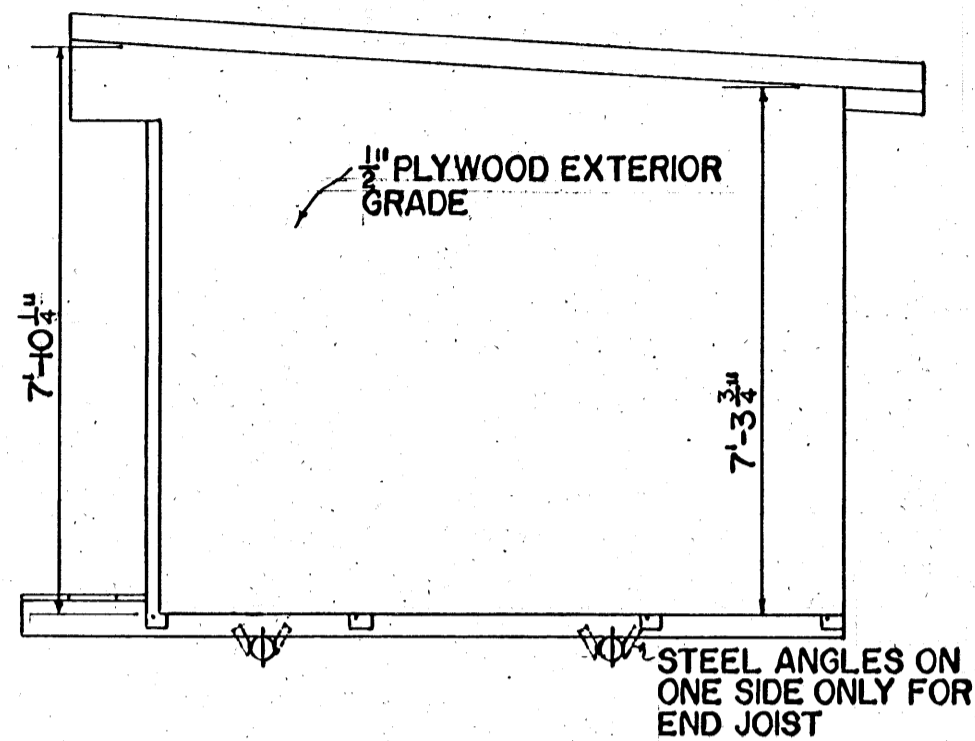
FRONT ELEVATION

SEE "DETAIL" I

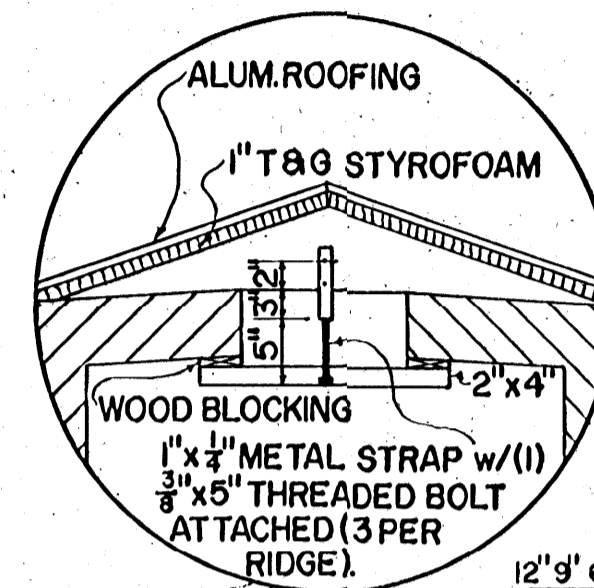
NOTE: UNIT TO BE USED WITH SOW PENS 3'-6" x 6'-0" HINGED ON BOTH ENDS OF ONE HALF"



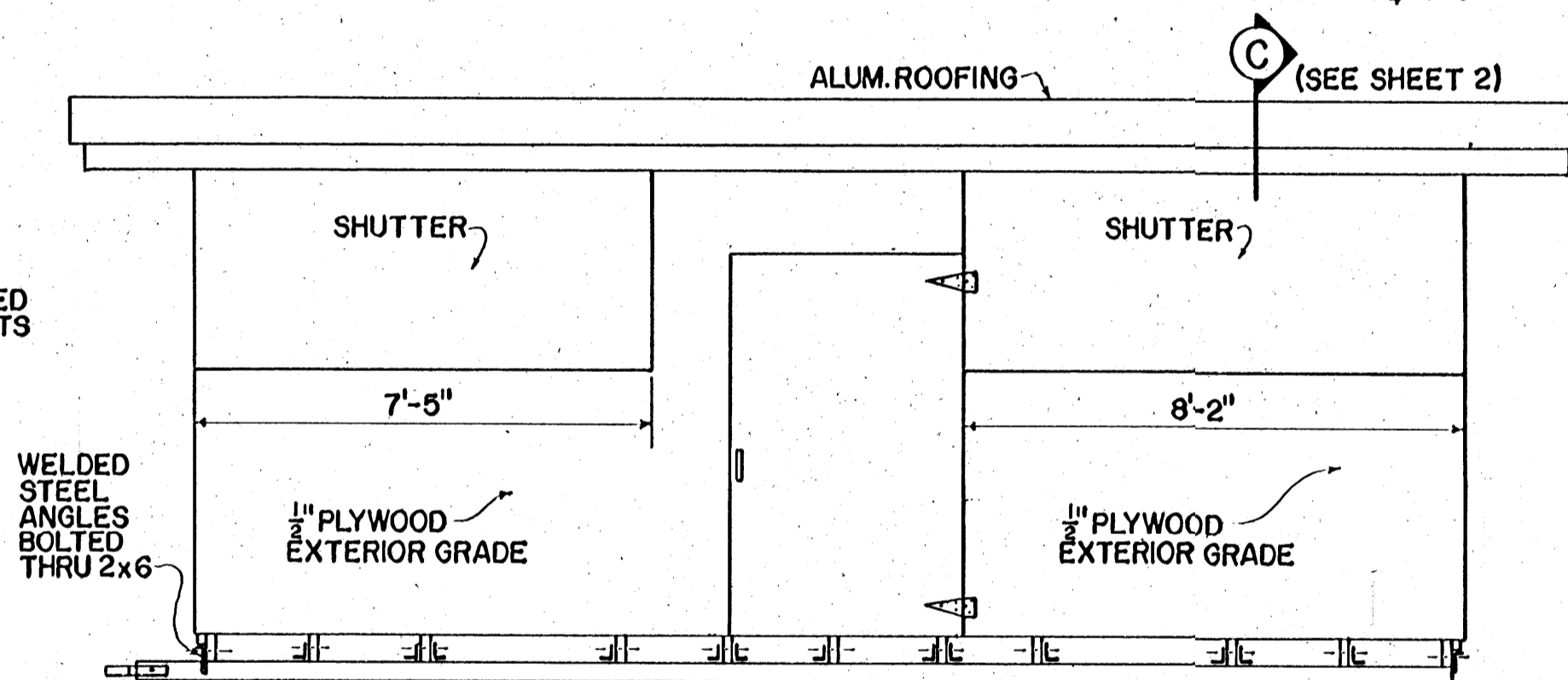
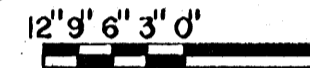
BUILDING CONNECTION



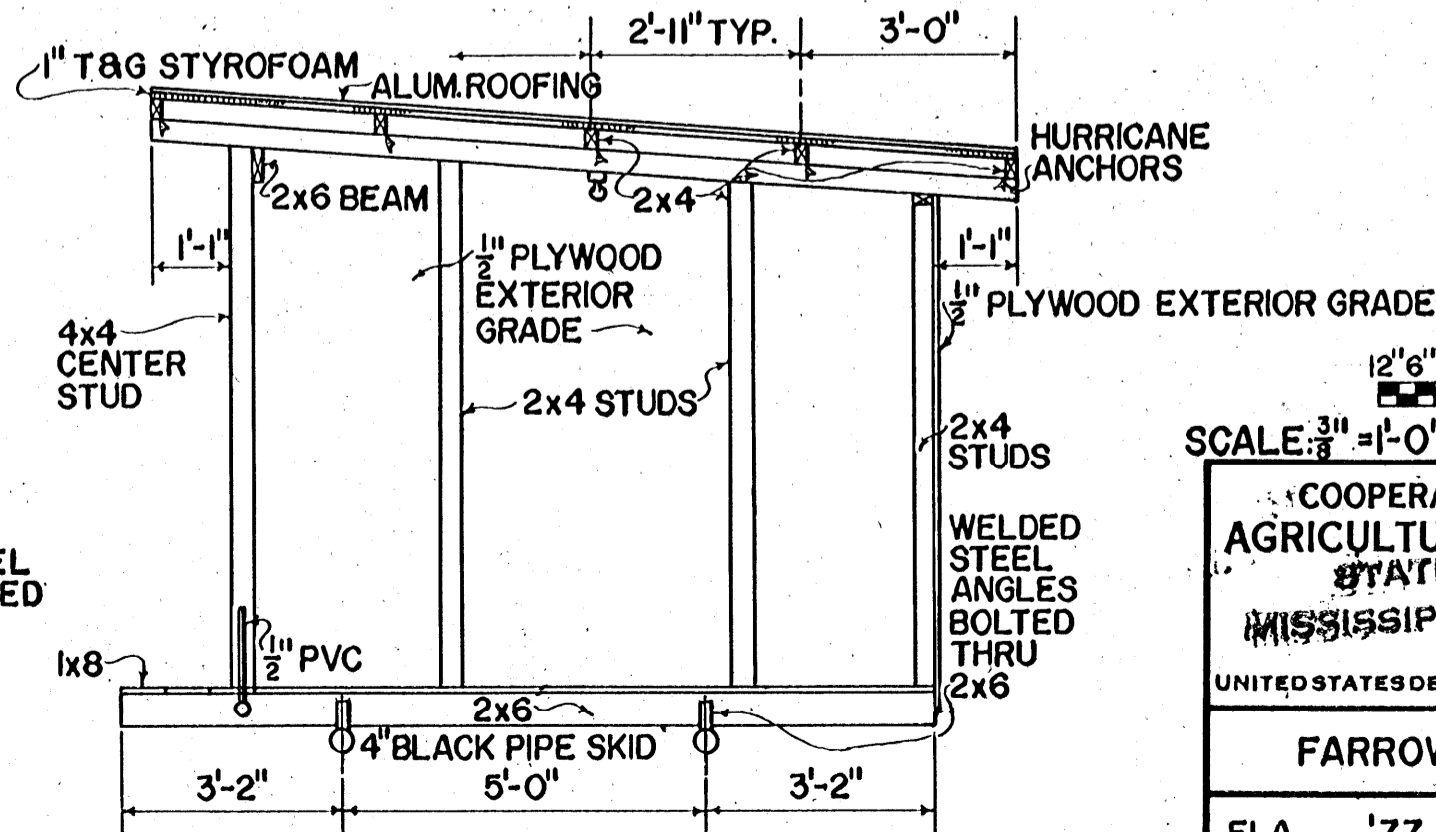
SIDE ELEVATION



DETAIL I SCALE: 3/4" = 1'-0"



REAR ELEVATION



SECTION B-B

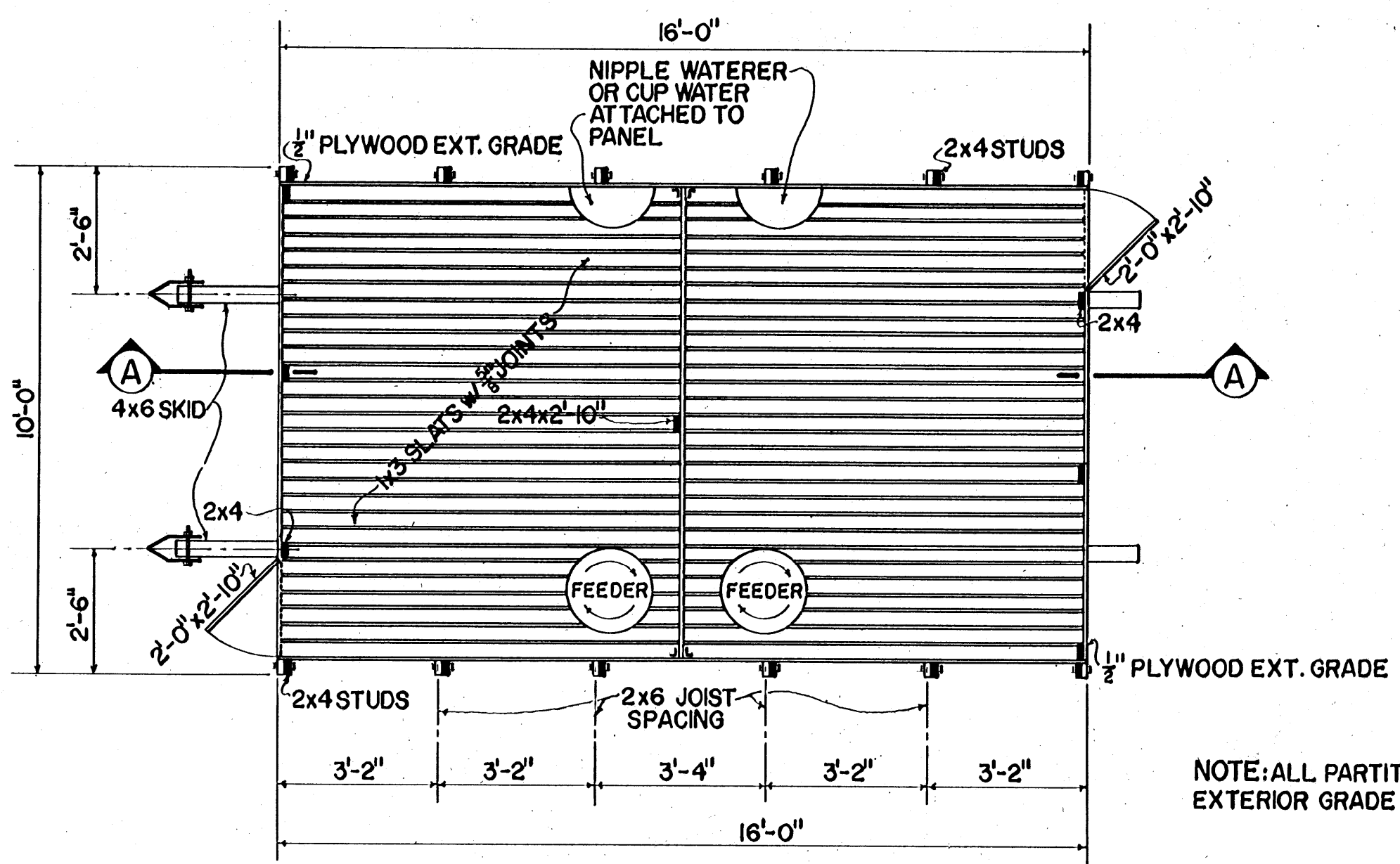
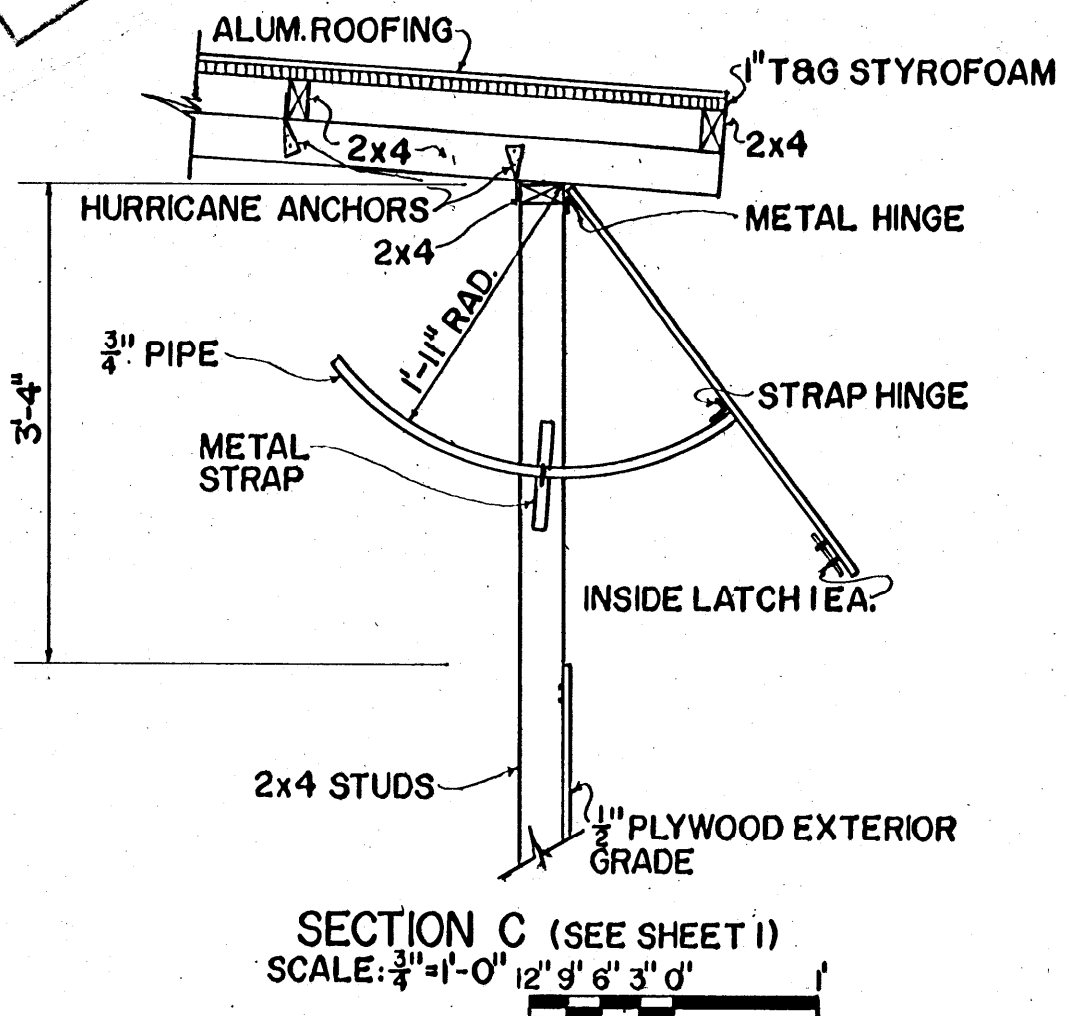


SCALE: 3/8" = 1'-0" UNLESS OTHERWISE NOTED

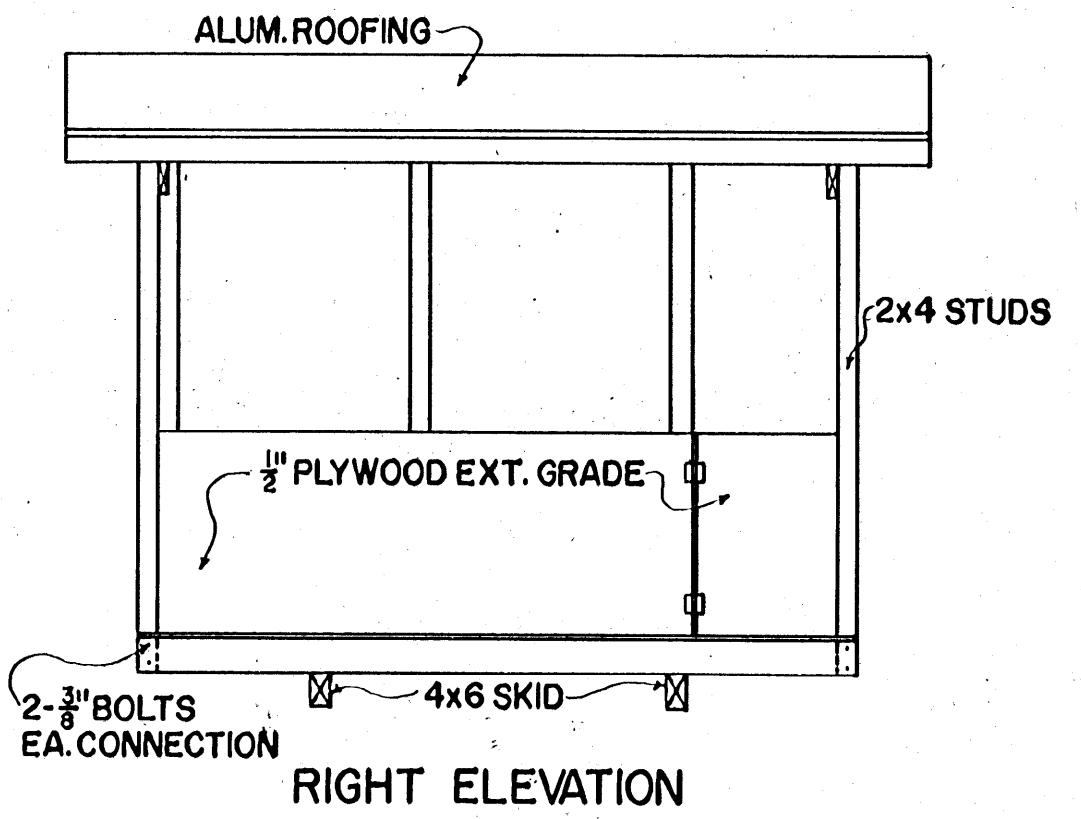
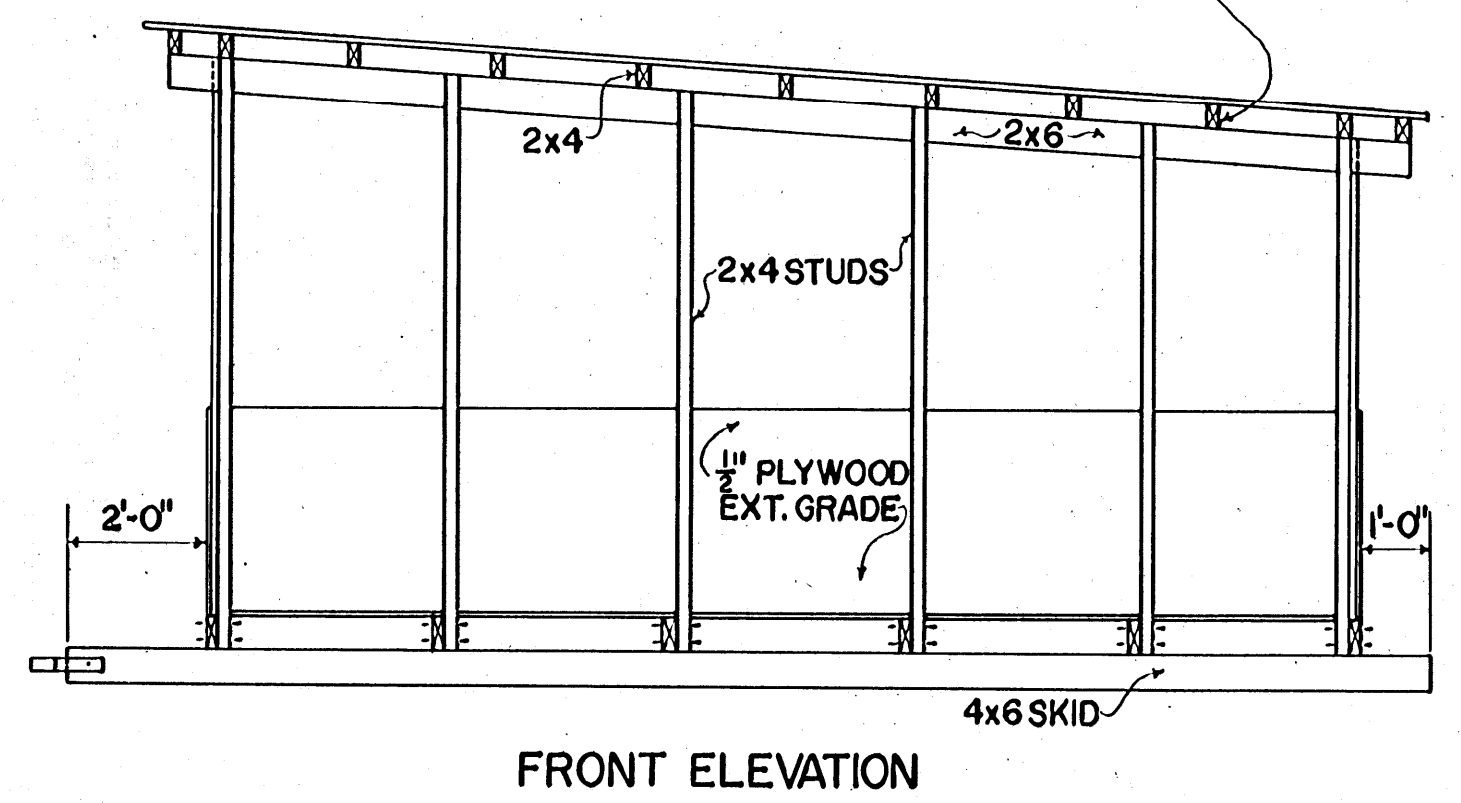
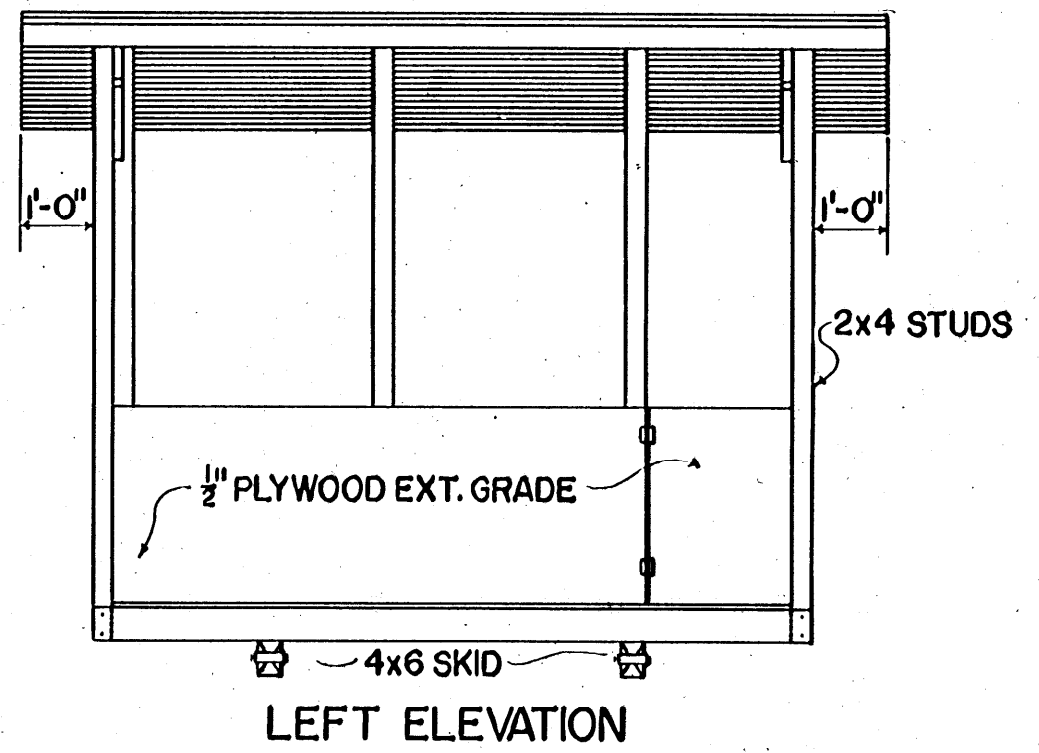
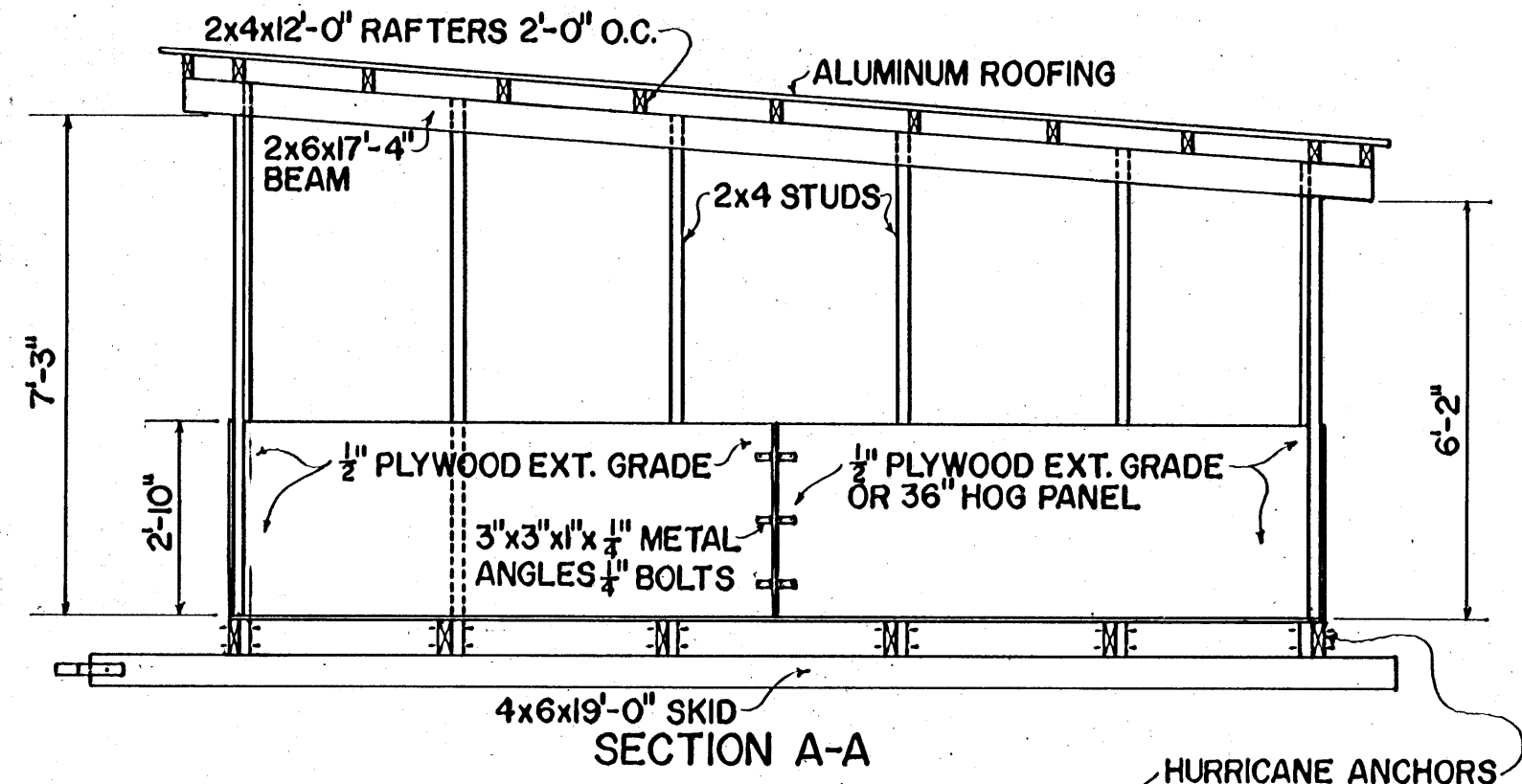
COOPERATIVE EXTENSION WORK IN AGRICULTURE AND HOME ECONOMICS STATE OF MISSISSIPPI MISSISSIPPI STATE UNIVERSITY AND UNITED STATES DEPARTMENT OF AGRICULTURE COOPERATING

FARROWING & FEEDER PIG UNIT

FLA. '77 6290 SHEET 1 OF 2



NOTE: ALL PARTITIONS & PANELS SHOWN AS $\frac{1}{2}$ " PLYWOOD EXTERIOR GRADE MAY BE REPLACED BY 36" HOG PANEL.



SCALE: $\frac{3}{4}$ " = 1'-0" UNLESS OTHERWISE NOTED

COOPERATIVE EXTENSION WORK IN
AGRICULTURE AND HOME ECONOMICS
STATE OF MISSISSIPPI
MISSISSIPPI STATE UNIVERSITY
AND
UNITED STATES DEPARTMENT OF AGRICULTURE COOPERATING

FARROWING & FEEDER PIG UNIT

FLA. '77 6290 SHEET 2 OF 2

BASED ON UNIVERSITY OF FLORIDA PLAN NO. FL. 558