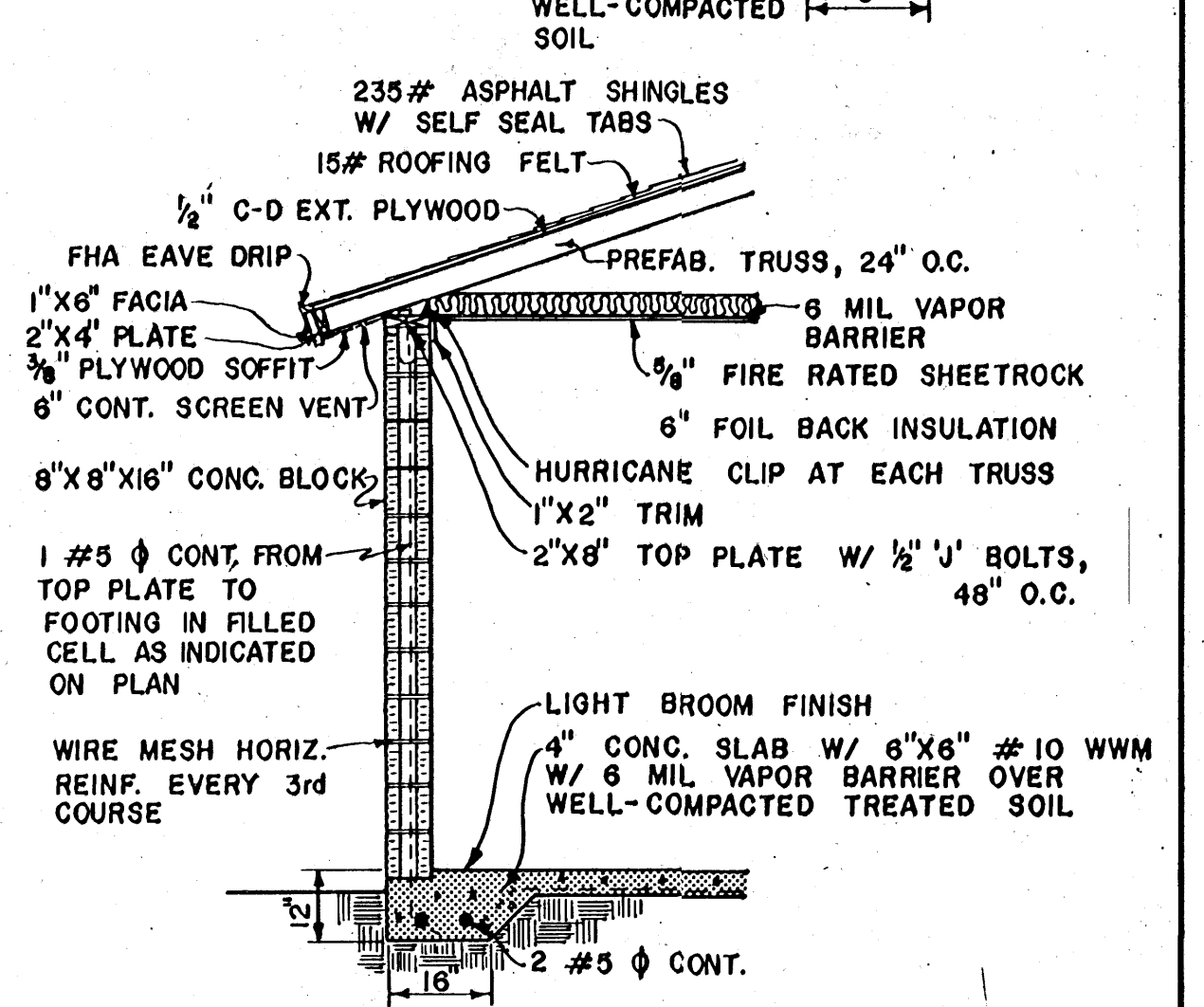
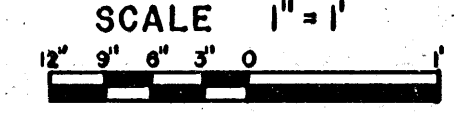
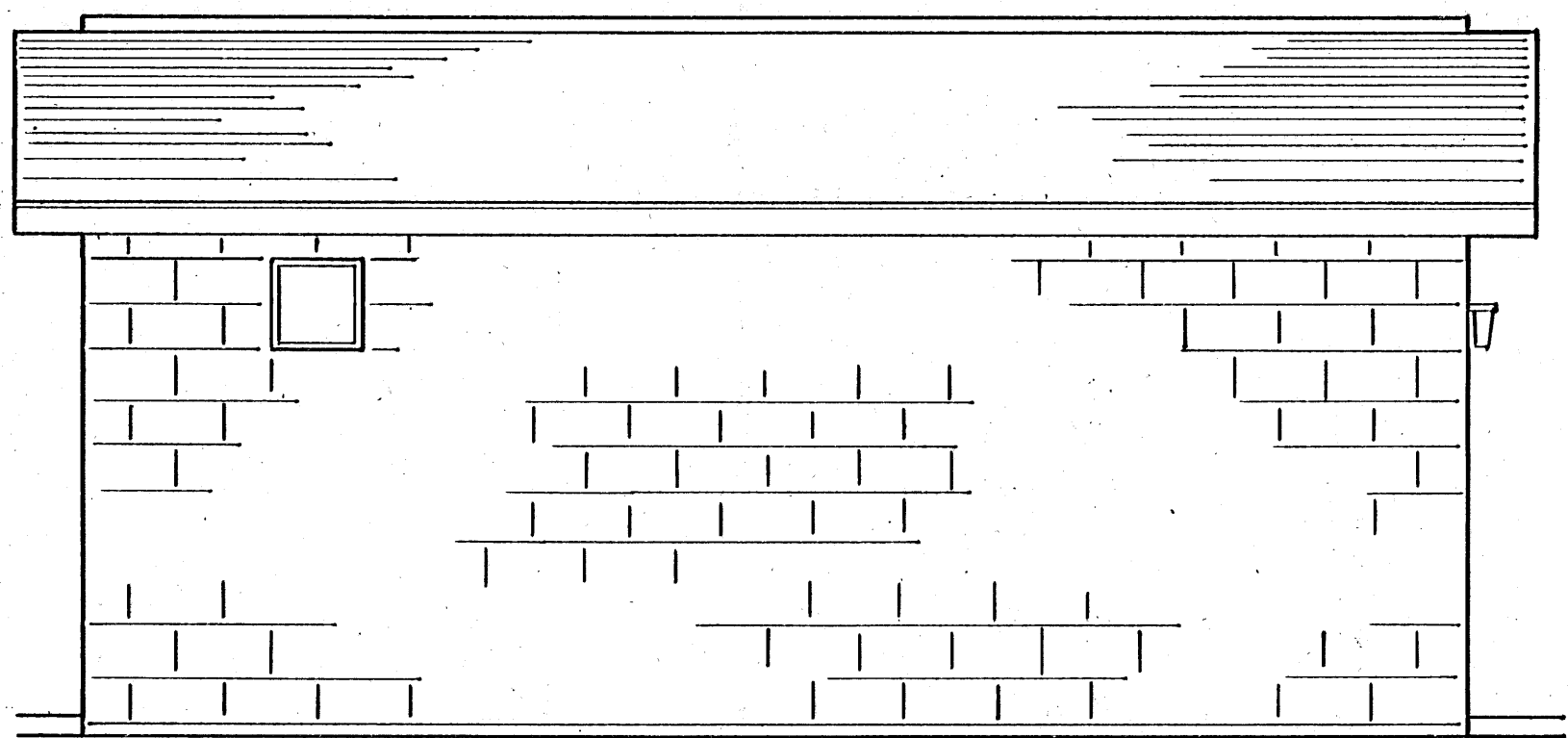


FLOOR PLAN

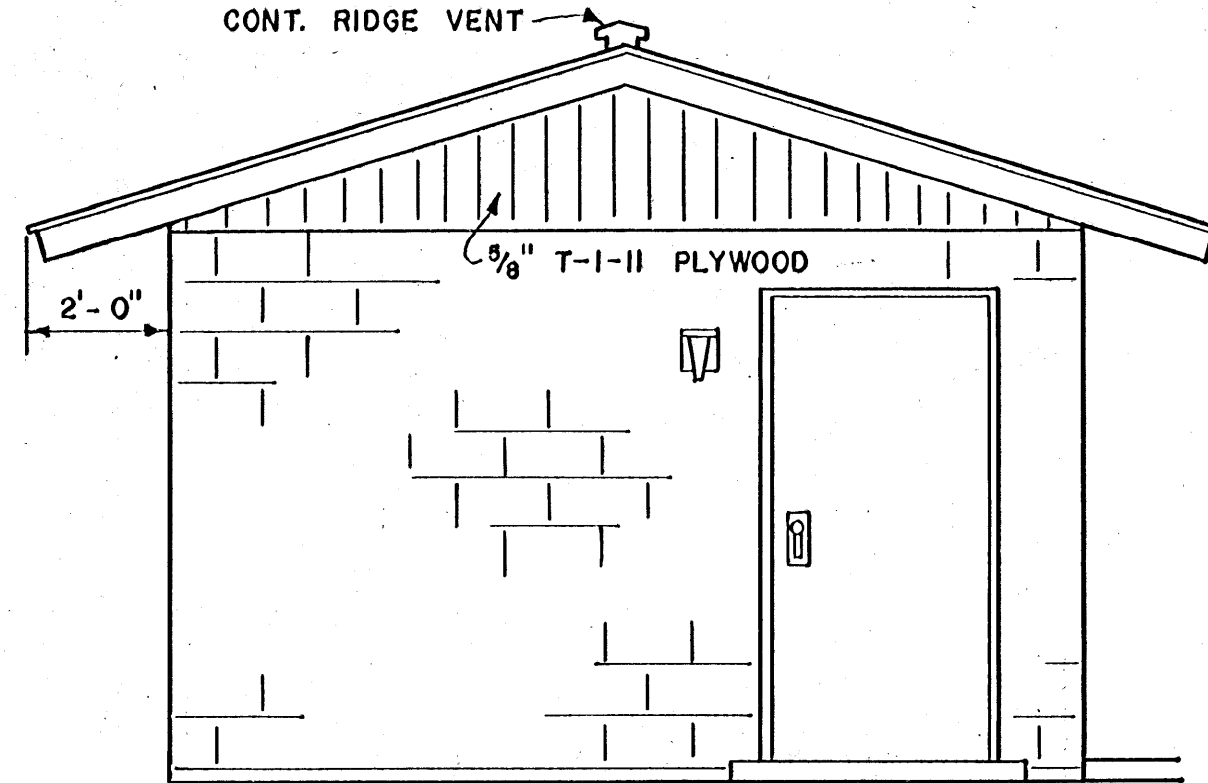
SECTION A  
SLAB EDGE DETAIL



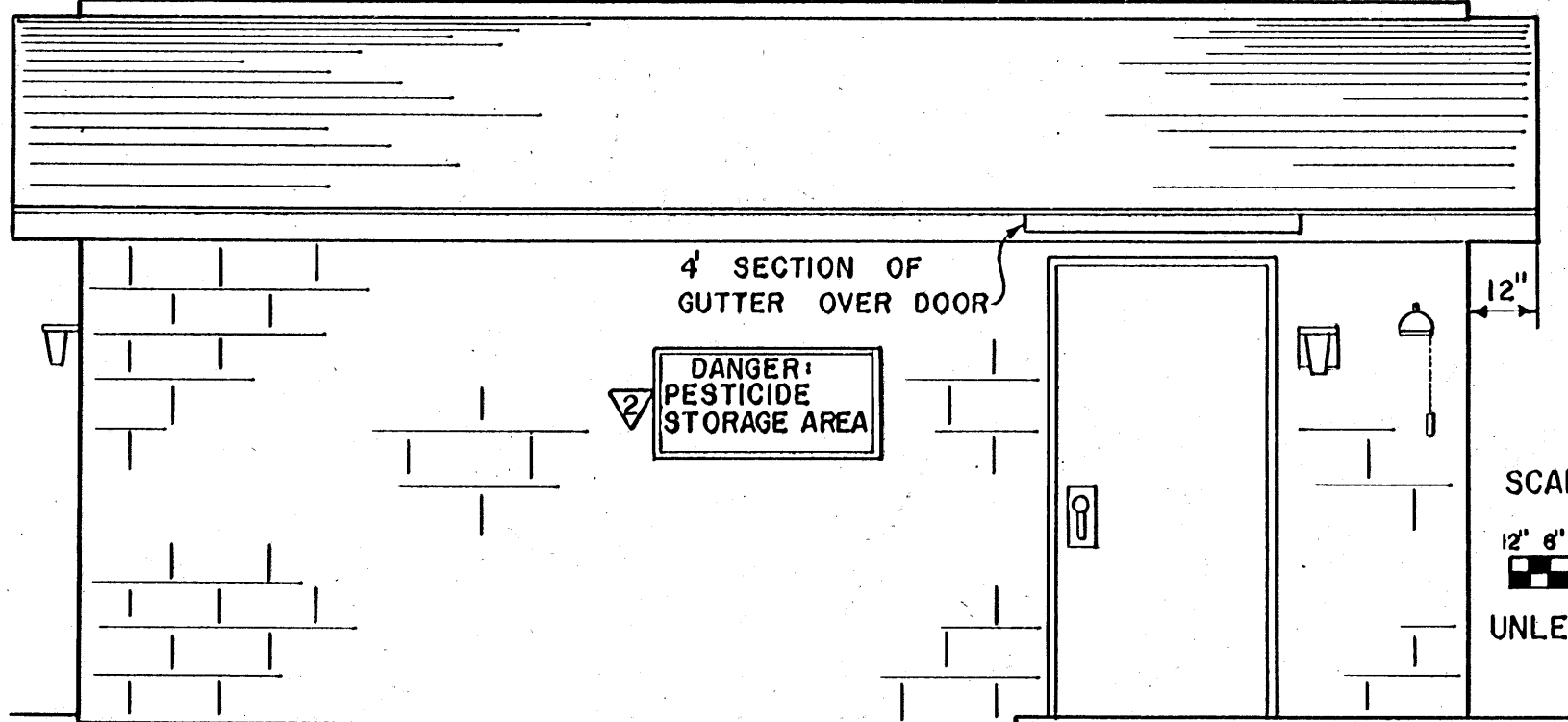
WALL SECTION



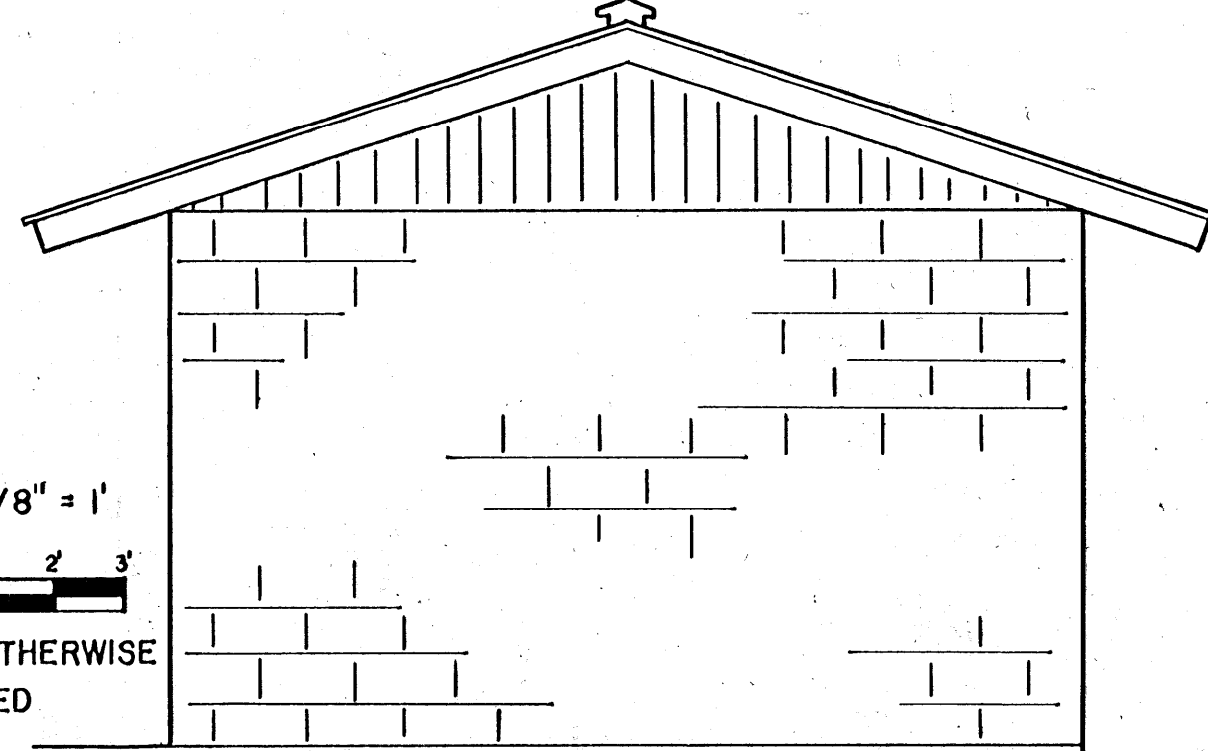
SOUTH ELEVATION



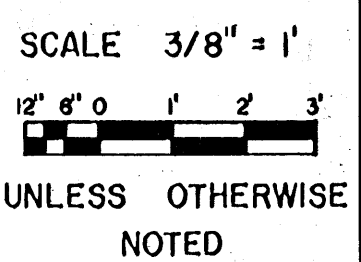
WEST ELEVATION



NORTH ELEVATION



EAST ELEVATION



UNLESS OTHERWISE NOTED

SAFETY

ALL DOORS METAL FIRE RATED W/ FIRE RATED JAMBS AND KEYS LOCKS

⊕	1 SAFETY SHOWER UNIT
⊙	1 EYEWASH UNIT
⊕	2 WALL MOUNT 10# ABC FIRE EXT.
⊙	2 CEILING MOUNT ION TYPE DETECTORS
▽	1 INDUSTRIAL TYPE FIRST AID KIT
▽	1 "DANGER: PESTICIDE STORAGE" SIGN

ELECTRICAL

ALL ELECTRICAL SHALL BE EXPLOSION PROOF TYPE AND ALL OUTLETS WEATHER PROTECTED LIGHT FIXTURES ARE 100 WATT INCANDESCENT V.P. FIXTURES

⊕	DUPLEX CONVENIENCE OUTLET
3	SINGLE POLE SWITCH
3 <sup>3</sup>	THREE WAY SWITCH
▽	500 CFM EXHAUST FAN W/ INLET GUARD AND EXHAUST DAMPER
▽	100 AMP PANEL - WEATHER PROTECTED
▽	WALL MOUNT HEATER APPROVED BY FIRE DEPT.
⊕	CEILING OUTLET
⊕	FLOOD LIGHT

COOPERATIVE EXTENSION WORK IN  
AGRICULTURE AND HOME ECONOMICS  
STATE OF MISSISSIPPI  
MISSISSIPPI STATE UNIVERSITY  
AND  
UNITED STATES DEPARTMENT OF AGRICULTURE COOPERATING

PESTICIDE STORAGE BUILDING

FL '83 EX. 6346 SHEET 1 OF 1